



Manuals.plus /

› Dolinvo /

› 12 Level Adjustable Electric Cupping Device User Manual

## Dolinvo CUPUS004

# 12 Level Adjustable Electric Cupping Device User Manual

Model: CUPUS004 | Brand: Dolinvo

## INTRODUCTION

Thank you for choosing the Dolinvo 12 Level Adjustable Electric Cupping Device. This portable device combines powerful massage and adsorption technology to provide a deep soothing experience, relieve muscle tension, and assist in skin tightening. Designed for convenience and effectiveness, it allows you to enjoy the benefits of cupping therapy from the comfort of your home, gym, or while traveling.



Image: The Dolinvo Electric Cupping Device, showcasing its ergonomic green design with gold accents and control panel.

## SAFETY INFORMATION

Read this instruction manual carefully before use to ensure safe and effective cupping massage. Always consult with a healthcare professional before starting any new therapy, especially if you have pre-existing medical conditions. Do not use on broken, irritated, or sensitive skin. Discontinue use if you experience discomfort or adverse reactions.

Statements regarding dietary supplements have not been evaluated by the FDA and are not intended to diagnose, treat, cure, or prevent any disease or health condition.

## PACKAGE CONTENTS

Upon opening the package, please verify that all items listed below are present and in good condition:

- 1x Electric Cupping Massager
- 1x USB C Cable
- 1x Instruction Manual
- 4x Cotton Balls
- 1x Essential Oil (may vary by package)



Image: A visual representation of the items included in the product package.

## PRODUCT FEATURES

- **Multifunctional Massage:** Combines powerful massage and adsorption technology for muscle tension relief and a deep soothing experience.
- **Adjustable Intensity:** Features 12 adjustable temperature levels and massage beads at the bottom, allowing for personalized settings. The device automatically stops after 20 minutes to prevent overheating.
- **Portable & Multi-functional:** Lightweight and compact design for easy portability. Combines cupping and scraping techniques for body massage, relaxation, skin firming, and post-workout recovery.
- **Versatile and Safe:** Suitable for all skin types, enabling gentle and safe use for smooth, healthy skin and a relaxing full-body massage at home.
- **Ergonomic and Rechargeable:** Ergonomic handle, lightweight design, and a rechargeable 2000mAh battery providing up to 60 minutes of use.

## 12 ADJUSTABLE SUCTION LEVELS

You can choose the most comfortable intensity



### INTENSITY LEVEL

1-4

Low  
suction

5-8

Mid range  
suction

9-12

Strong  
scustion

Image: An illustration highlighting the device's core functions: Red Light therapy, Massage, Dynamic Suction, Heating, and Flameless Electric operation.

## FAST & CONVENIENT CHARGING

The built-in battery is rechargeable and can be carried with you to meet the needs of massaging shoulders, neck, legs, etc. anytime, anywhere.

**2000** mAh

**Rechargeable Battery**

**Last for 60 Minutes**



Image: A visual guide to the 12 adjustable suction levels, categorized into low, mid-range, and strong intensity.

## SETUP

### Initial Charging

Before first use, fully charge the device using the provided USB-C cable. Connect the USB-C end to the device's charging port and the other end to a compatible USB power adapter (not included). The charging indicator light will show the charging status. The built-in 2000mAh rechargeable battery provides up to 60 minutes of continuous use.



Image: The device connected to a USB-C charging cable, illustrating its rechargeable battery feature.

## OPERATING INSTRUCTIONS

### Controls Overview

#### PACKAGE LIST

- 1x cupping massager
- 1x USB C cable
- essential oil
- 4x cotton balls
- 1x instruction manual



Image: A detailed view of the device's control panel, indicating the functions of each button.

- **Power Button (On/Off):** Press and hold to turn the device on or off.
- **Suction Adjustment (+/-):** Use these buttons to increase or decrease the suction intensity (1-12 levels).
- **Pressure Relief Button:** Press to release suction from the skin.
- **Temperature Button:** Press to cycle through temperature levels.

## Application

Ensure your skin is clean and dry. For best results and to allow the device to glide smoothly, apply a small amount of essential oil or massage cream to the area you wish to treat. Place the device firmly on the skin, ensuring a good seal.

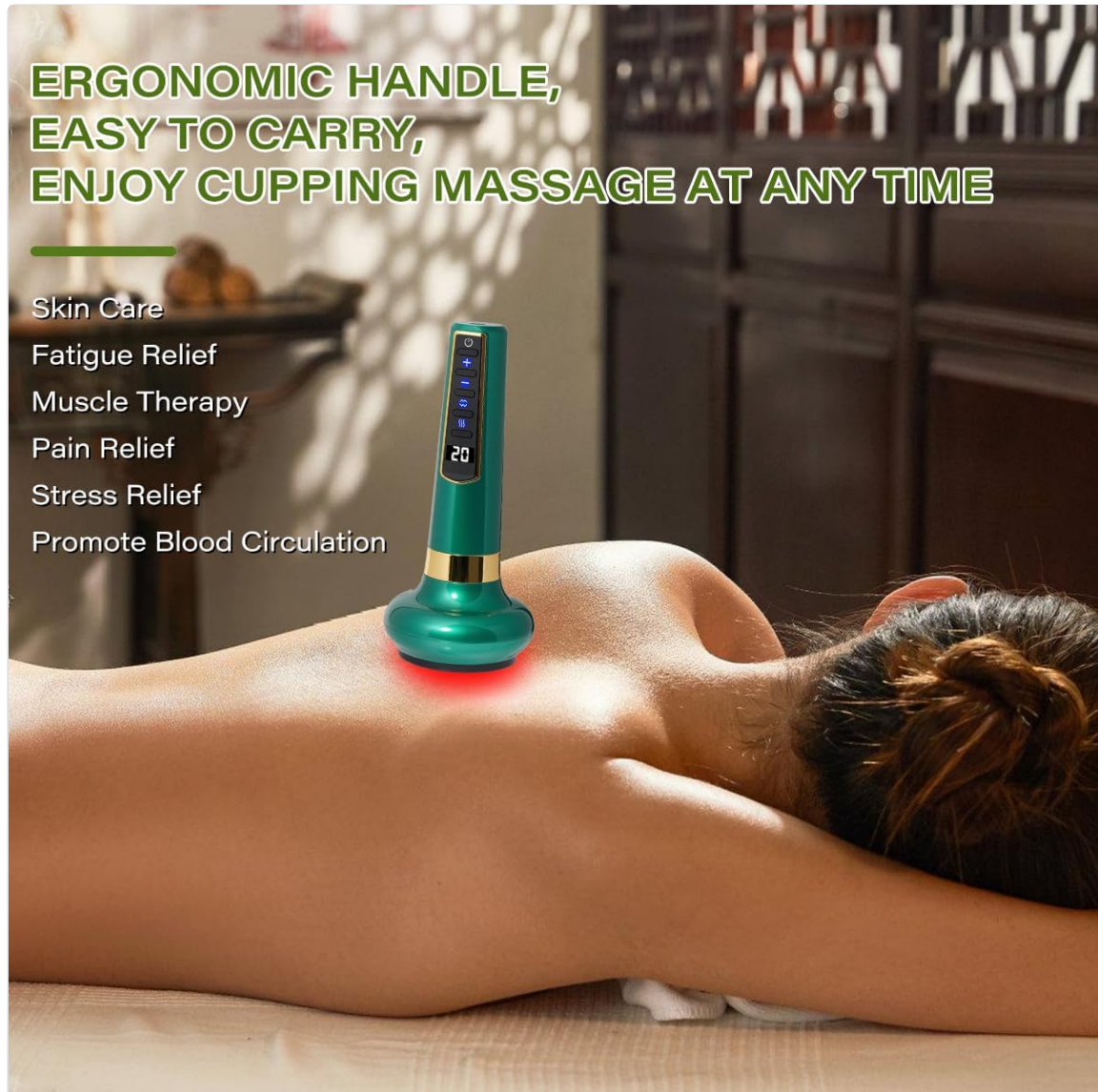


Image: The cupping device in use on a person's back, demonstrating its ergonomic design for comfortable application.

## Adjusting Intensity and Temperature

Once the device is on and applied to the skin, use the '+' and '-' buttons to adjust the suction intensity to your preferred level. Start with a lower intensity and gradually increase as comfortable. Use the temperature button to select your desired heat level. The device will automatically stop after 20 minutes of continuous operation to prevent overheating.



Image: Examples of the device's versatile use for relaxation and massage on different body parts.

**Recommended Application Areas**

The device can be used on various parts of your body, including the neck, shoulders, back, upper arms, waist, hips, and legs. Avoid using on bony areas, open wounds, or areas with varicose veins.

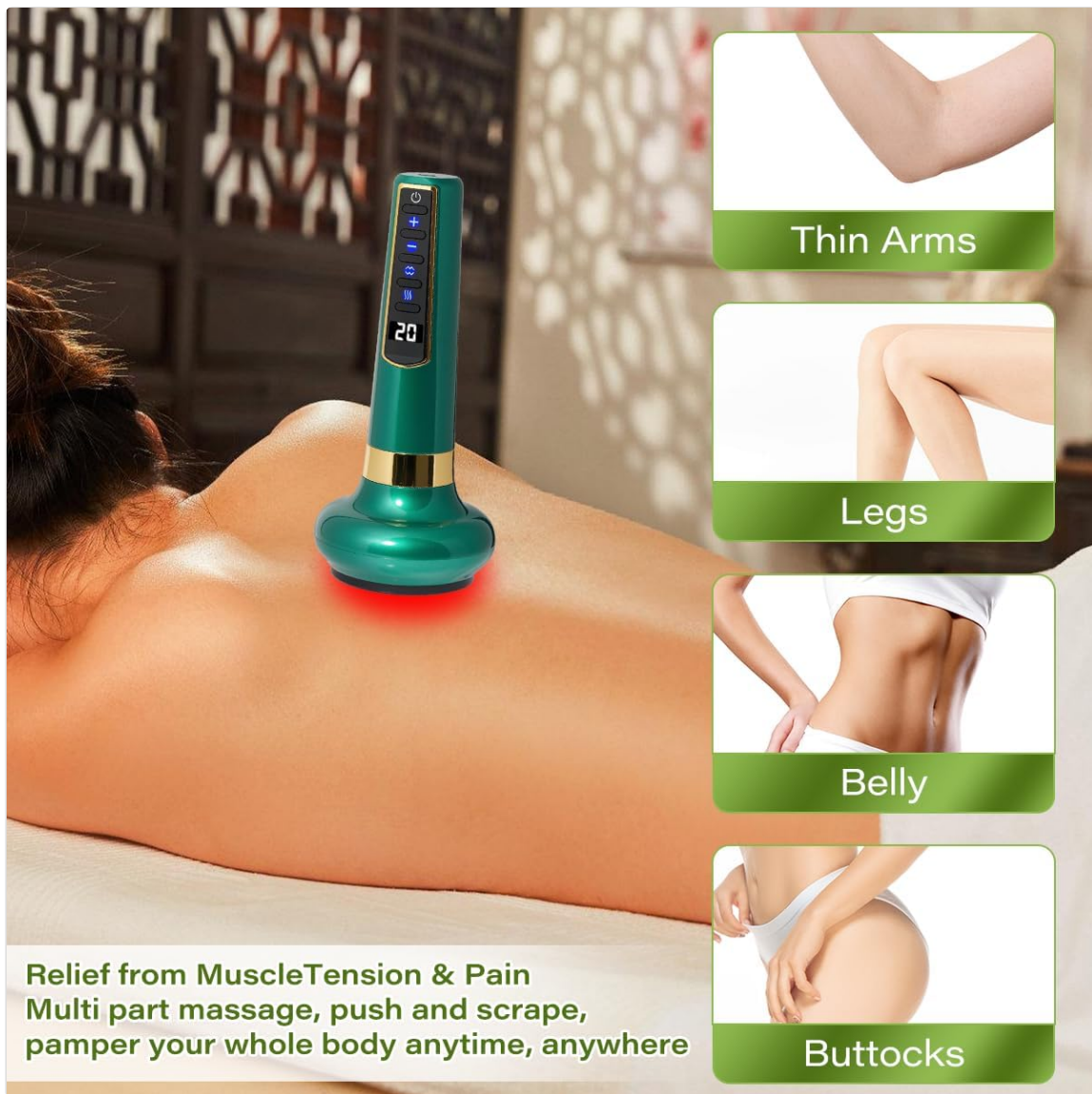


Image: A guide to different body areas where the cupping device can be effectively applied for muscle tension and pain relief.

## Understanding Cupping Marks

After using the device, you may observe round marks on your skin. These are normal and indicate the effect of the cupping therapy. The color of these marks can vary:

- **Bright Red:** Generally indicates good circulation.
- **Dark Purple:** May suggest areas of stagnation or tension.
- **Blistering:** Not good. This indicates excessive suction or prolonged application. Reduce intensity and duration.

These marks typically fade and disappear within a week. If the skin turns red, it is a normal reaction and will subside within a couple of days.

## ELECTRIC CUPPING THERAPY /MUSCLE MASSAGE



Image: A visual explanation of different cupping marks and their significance, along with an example on a person's back.

## SMART VACUUM CUPNING MASSAGER



This is an effective massage technique for relieving fatigue. After use, the skin may turn red, which is a normal reaction. This effect will disappear within a couple of days.



Image: An example of skin redness after using the device, clarifying it as a normal and temporary reaction.

## MAINTENANCE

### Cleaning the Device

After each use, wipe the suction cup and the device's surface with a soft, damp cloth. You may use a mild disinfectant if necessary. Ensure the device is completely dry before storing. Do not immerse the device in water or use abrasive cleaners.

### Storage

Store the device in a cool, dry place away from direct sunlight and extreme temperatures. Keep out of reach of children.

## TROUBLESHOOTING

Problem	Possible Cause	Solution
Device does not turn on.	Battery is low or depleted.	Charge the device fully using the provided USB-C cable.
No suction or weak suction.	Poor seal on skin; suction level too low.	Ensure the device is firmly pressed against the skin to create a seal. Increase suction intensity using the '+' button. Apply essential oil or cream to improve glide and seal.
Device stops automatically.	Automatic shut-off feature activated.	This is a normal safety feature. The device is designed to stop after 20 minutes of continuous use to prevent overheating. You can restart it after a brief pause.
Skin irritation or blistering.	Suction intensity too high or prolonged application in one spot.	Reduce suction intensity. Do not leave the device in one spot for too long. Move it continuously or apply for shorter durations. Consult a healthcare professional if irritation persists.

## SPECIFICATIONS

Feature	Detail
Product Dimensions	8.6 x 5 x 3.9 inches
Item Weight	14.46 ounces (410 Grams)
Model Number	CUPUS004
Batteries	1 A battery required (included)
Power Source	Battery Powered
Material	Plastic
Brand	Dolingo
Manufacturer	Dolingo

## WARRANTY AND SUPPORT

For any questions, concerns, or support needs regarding your Dolingo Electric Cupping Device, please refer to the contact information provided with your purchase or visit the official Dolingo website. Please retain your proof of purchase for any warranty claims.

The standard return policy allows for returns or replacements within 30 days of purchase, subject to

the seller's terms and conditions.