

Manuals+

[Q & A](#) | [Deep Search](#) | [Upload](#)

manuals.plus /

› [BrickBling](#) /

› [BrickBling LED Lights for Lego Hokusai The Great Wave Wall Art 31208 \(RC Version\) Instruction Manual](#)

BrickBling 31208

BrickBling LED Lights for Lego Hokusai The Great Wave Wall Art 31208 (RC Version)

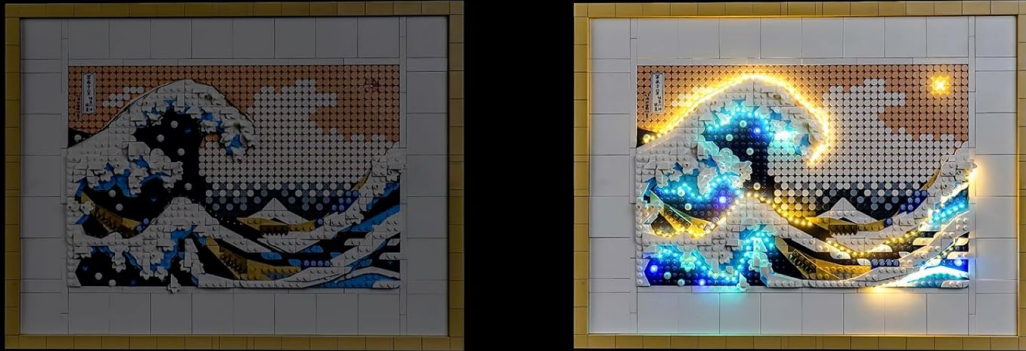
Instruction Manual

INTRODUCTION

This manual provides instructions for the installation, operation, and maintenance of your BrickBling LED Light Kit, designed specifically for the Lego Hokusai The Great Wave Wall Art (model 31208). This kit enhances your Lego model with dynamic lighting effects. Please note that the Lego model itself is not included with this light kit.

Accessories only

Compatible with LEGO
The Great Wave Wall 31208



No Building Kits

The image above illustrates the Lego Hokusai Great Wave Wall Art model before and after the BrickBling LED light kit installation. The light kit is sold separately from the Lego model.

SAFETY INFORMATION

- **Choking Hazard:** This product contains small parts and is not suitable for children under 3 years of age. Adult supervision is recommended during assembly and operation.
- **Electrical Safety:** Use only the provided power supply or a compatible USB power source (3-5V). Do not attempt to modify the wiring or components. Keep the light kit away from water and moisture.
- **Handling:** The wires and LED components are delicate. Handle with care during installation to prevent damage.

PACKAGE CONTENTS

Your BrickBling LED Light Kit (RC Version) package includes the following components:

- LED Light Kit (various light strips and individual LEDs)
- Connecting Cables (various lengths)
- Expansion Boards

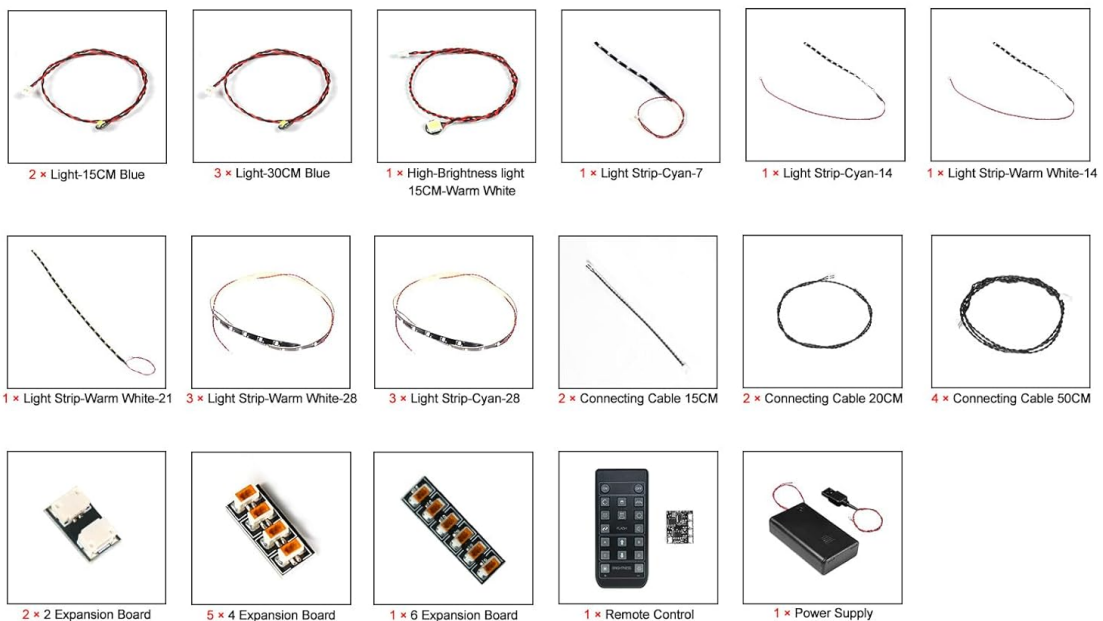
- Remote Control
- Power Supply (USB Powered)
- Online Instruction Manual Access Card

Packaging List-All You will Get is Light Kit Only



(Light Kit)

(Online Instructions)



A visual representation of the components included in your BrickBling LED Light Kit package.

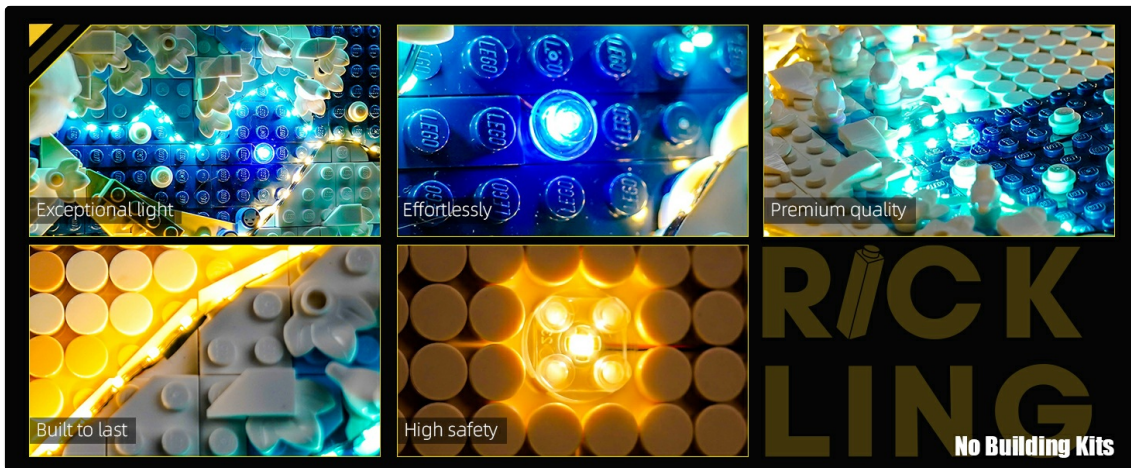
SETUP AND INSTALLATION

The installation process requires careful attention to detail due to the delicate nature of the LED components and wiring. It is highly recommended to follow the detailed online instructions provided by BrickBling.

Accessing Online Instructions:

This product does not include a paper manual. To access the comprehensive PDF and video instructions:

1. Locate the website address printed on the booklet or card included in your package.
2. Visit the specified website.
3. Enter the model number (31208) and any other required characters from the label on the back of your package to find the specific instructions for your kit.



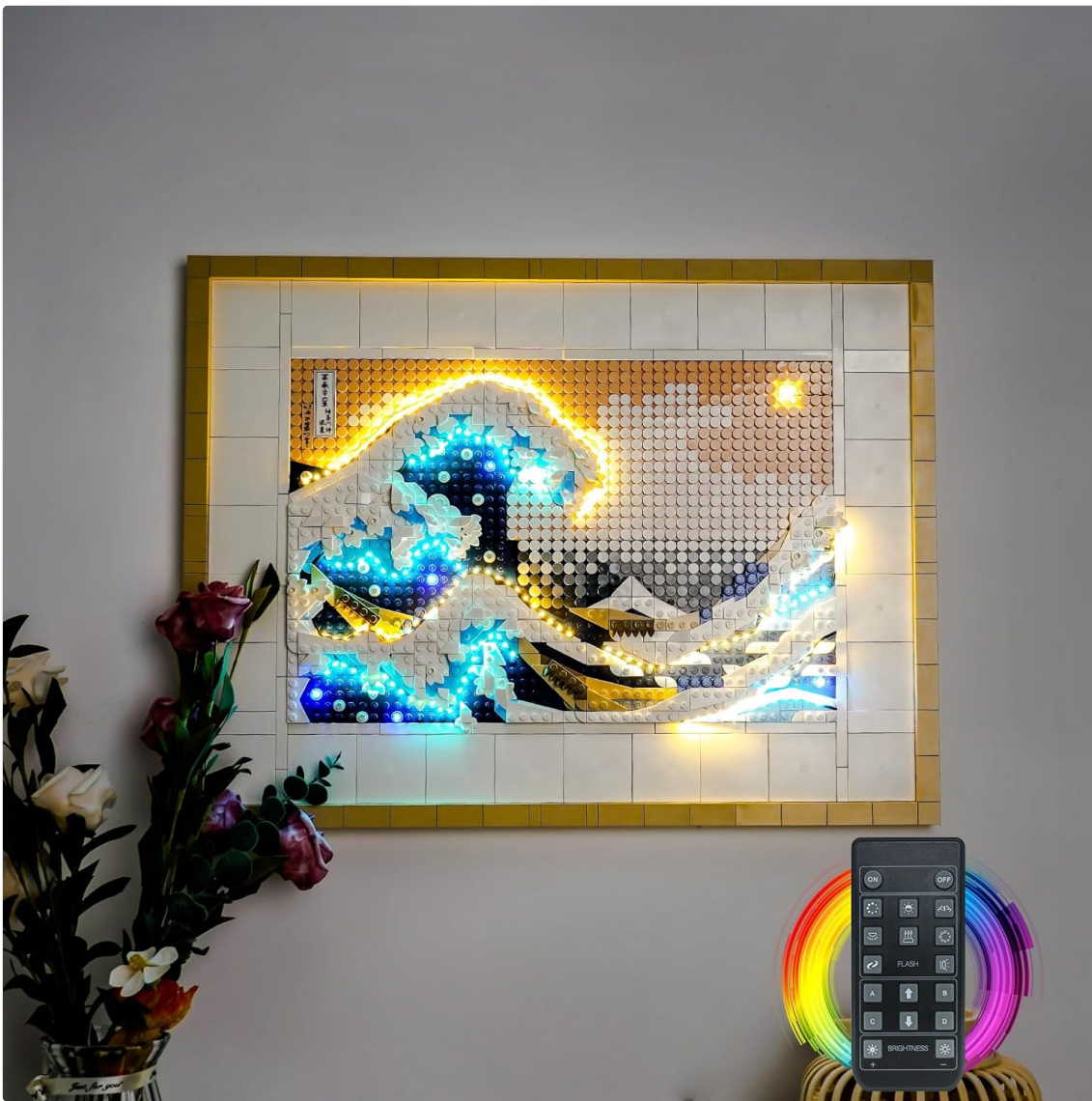
Follow these steps to access the detailed online installation guide, including video tutorials.

General Installation Tips:

- **Prepare Your Workspace:** Ensure a clean, well-lit area with enough space to work on your Lego model.
- **Handle with Care:** The wires are thin and designed to be hidden within the Lego structure. Avoid excessive pulling or bending to prevent damage.
- **Test Components:** It is advisable to test each light component before fully integrating it into the model to ensure functionality.
- **Conceal Wires:** Route wires carefully between Lego studs and plates to minimize visibility and maintain the aesthetic of your model.
- **Power Connection:** Connect the light kit to the provided USB power supply. Ensure the power source is stable and within the recommended voltage range (3-5V).

OPERATING INSTRUCTIONS (RC VERSION)

Your BrickBling LED Light Kit (RC Version) comes with a remote control for convenient operation of the lighting effects.



The remote control allows for easy adjustment of your light kit's settings.

Remote Control Functions:

- **Power On/Off:** Press the **ON** or **OFF** button to turn the lights on or off.
- **Brightness Adjustment:** Use the brightness control buttons (e.g., **+/-** or specific levels) to increase or decrease the light intensity.
- **Mode Selection:** Cycle through various lighting modes (e.g., static, flash, fade) using the designated mode buttons.
- **Color Selection:** If applicable, use the color buttons to change the light color.
- **Speed Control:** Adjust the speed of dynamic lighting effects using the speed control buttons.

Ensure the remote control has fresh batteries and is pointed towards the receiver unit of the light kit for optimal response.

MAINTENANCE

- **Cleaning:** Gently wipe the LED components and wires with a dry, soft cloth if dust accumulates. Do not use liquid cleaners directly on the electrical components.
- **Storage:** If disassembling for storage, carefully disconnect wires and store components in a dry, cool place, protected from physical damage.

- **Wire Integrity:** Periodically inspect wires for any signs of wear or damage. Avoid sharp bends or pinching.

TROUBLESHOOTING

If you encounter issues with your BrickBling LED Light Kit, refer to the following common solutions:

Problem	Possible Cause	Solution
Lights do not turn on.	No power, loose connection, faulty component.	Ensure USB power supply is connected and functional. Check all wire connections to expansion boards and LEDs. Verify remote control batteries.
Some lights are not working.	Damaged LED, loose connection, incorrect polarity.	Carefully inspect the specific non-working LED and its connections. Ensure wires are inserted correctly into expansion board ports.
Remote control is unresponsive.	Dead batteries, obstruction, remote out of range.	Replace remote control batteries. Ensure no obstructions between remote and receiver. Operate within close range of the receiver.
Lights flicker or dim unexpectedly.	Unstable power supply, loose connection.	Try a different USB power source. Recheck all connections for secure fit.

If issues persist after attempting these solutions, please contact BrickBling customer support for further assistance.

SPECIFICATIONS

- **Brand:** BrickBling
- **Model Name:** Compatible with Lego Hokusai The Great Wave Wall Art 31208 (RC Version Light)
- **Light Source Type:** LED
- **Power Source:** USB Powered (3-5V recommended)
- **Switch Type:** Remote Control
- **Material:** Acrylonitrile Butadiene Styrene (ABS), Copper
- **Indoor/Outdoor Usage:** Indoor
- **Assembly Required:** Yes
- **Recommended Age:** 15 years and up
- **Included Components:** Light Kit, Power Supply, Remote Control

WARRANTY AND SUPPORT

For warranty information, product support, or to report any issues not covered in this manual, please

visit the official BrickBling website or contact their customer service directly. Keep your purchase receipt as proof of purchase.

BrickBling Customer Service: Refer to the contact information provided on the product packaging or the official BrickBling website.