

## Manuals+

[Q & A](#) | [Deep Search](#) | [Upload](#)

Manuals.plus /

› [Gaoxyzthy](#) /

› Gaoxyzthy 15.6 Inch Laptop LCD Screen Replacement User Manual

## Gaoxyzthy LQ156M1JW26

# Gaoxyzthy 15.6 Inch Laptop LCD Screen Replacement User Manual

Model: LQ156M1JW26

## INTRODUCTION

This manual provides essential information for the installation, operation, and maintenance of your Gaoxyzthy 15.6 Inch Laptop LCD Screen Replacement. This product is designed to replace worn or damaged laptop displays, offering a 1920x1080 FHD resolution for clear visuals. Please read this manual thoroughly before attempting any installation or use.

## PRODUCT FEATURES

- **Crisp Visuals:** Features a 1920x1080 FHD resolution for stunning clarity and an enhanced viewing experience.
- **Durable Construction:** Made from superior LCD material, designed for wear and tear resistance, ensuring long-lasting performance.
- **Energy Efficient:** Utilizes a 40PIN non- interface, contributing to minimal power consumption and extended laptop battery life.
- **Lightweight Design:** The lightweight and convenient design facilitates easier installation.
- **Wide Compatibility:** Suitable for various laptops requiring a 15.6-inch screen replacement, ideal for both home users and repair professionals.

## PACKAGE CONTENTS

Upon opening the package, please verify that all components are present and undamaged:

- 1 x Gaoxyzthy 15.6 Inch Laptop LCD Screen (Model: LQ156M1JW26)

## IMPORTANT NOTES AND WARNINGS

Please observe the following critical information before proceeding:

- **Professional Installation Recommended:** Replacing a laptop screen requires specialized tools and technical expertise. Non-professionals are strongly advised against attempting installation without proper knowledge and equipment to prevent damage to the screen or the laptop.

- **Model and Resolution Verification:** Before purchase and installation, meticulously verify your laptop's original screen model and resolution to ensure compatibility and avoid acquiring an incorrect replacement. The model for this screen is LQ156M1JW26 with 1920x1080 FHD resolution.
- **Static Electricity:** Always take precautions against static electricity when handling electronic components. Use an anti-static wrist strap or frequently touch a grounded metal object.
- **Power Disconnection:** Ensure the laptop is completely powered off and disconnected from all power sources (including battery) before beginning any installation.

## SETUP AND INSTALLATION

---

Due to the technical nature of laptop screen replacement, detailed step-by-step instructions are beyond the scope of this general manual. It is highly recommended to consult a qualified technician or refer to specific service manuals for your laptop model. The following provides general guidance:

1. **Preparation:** Gather necessary tools (e.g., small screwdrivers, plastic prying tools, anti-static mat/wrist strap). Ensure a clean, well-lit workspace.
2. **Disassembly:** Carefully disassemble the laptop bezel and remove the old screen. Pay close attention to cable routing and connector types.
3. **Connector Handling:** The screen connects via a 40PIN non- interface. Handle the connector and cable with extreme care to avoid bending pins or damaging the ribbon cable.
4. **Installation:** Gently connect the new LCD screen, ensuring the connector is fully seated and secured. Position the new screen within the laptop lid.
5. **Testing:** Before reassembling the entire laptop, perform a preliminary test by connecting the power and turning on the laptop to verify the new screen functions correctly.
6. **Reassembly:** If the screen functions, carefully reassemble the laptop, ensuring all screws and clips are properly secured.

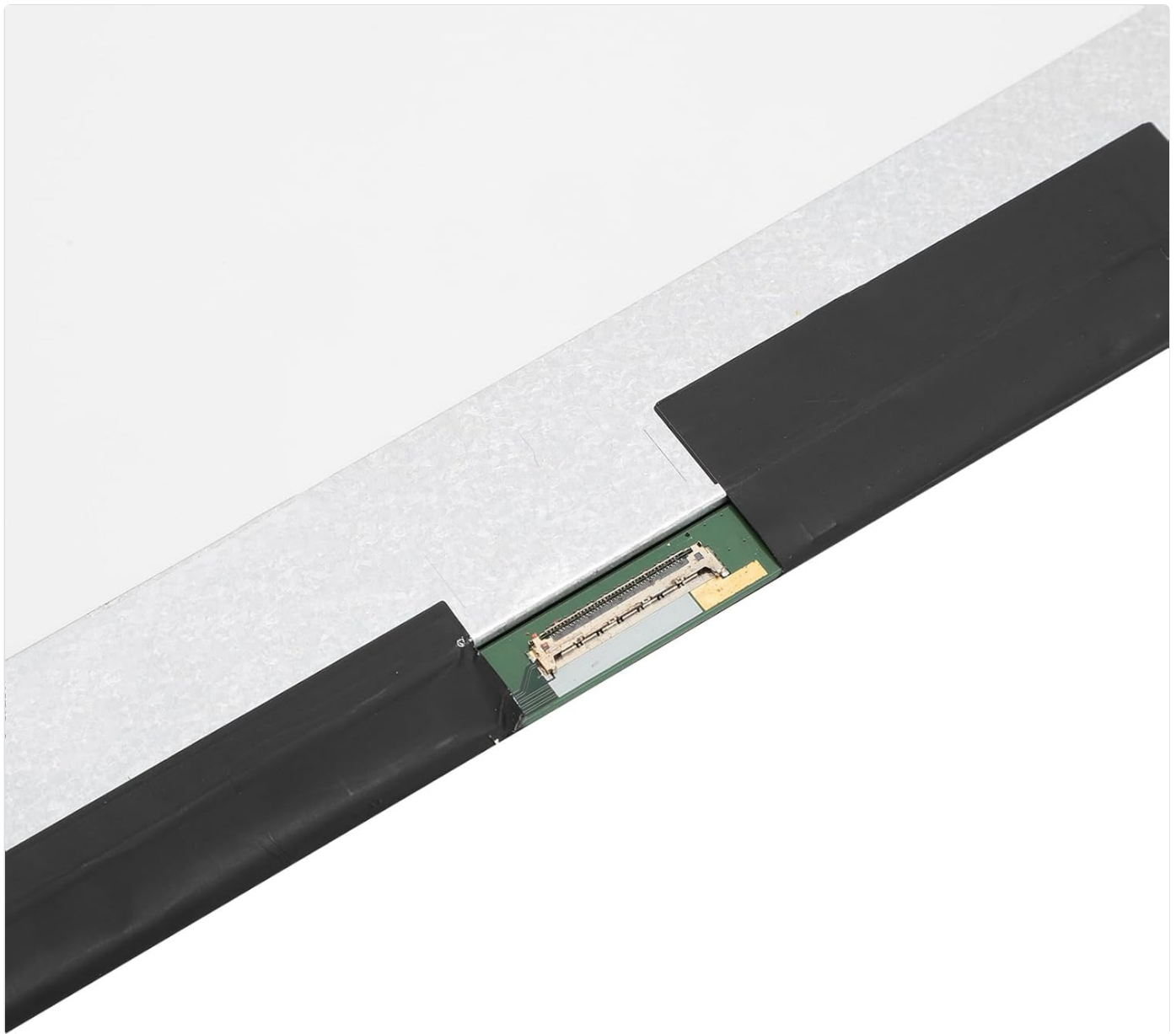


# LAPTOP LCD SCREEN

This laptop LCD display screen is made of excellent LCD material, which is sturdy and abrasion resistant, not easy to be damaged, has a long service life, and displays clearly.



*Image: The 15.6-inch LCD screen being prepared for installation into a laptop chassis. This screen is made of durable LCD material, designed for longevity and clear display.*



*Image: A detailed view of the 40PIN connector located on the back of the LCD screen, which is crucial for connecting to the laptop's motherboard. Handle this connector with care during installation.*

## OPERATING

---

Once installed, the LCD screen operates as the primary display for your laptop. No specific operational steps are required for the screen itself beyond standard laptop usage. Ensure your laptop's display drivers are up-to-date for optimal performance and resolution settings.

## MAINTENANCE

---

Proper maintenance can extend the lifespan and maintain the clarity of your LCD screen:

- **Cleaning:** Use a soft, lint-free microfiber cloth specifically designed for electronics. For stubborn smudges, slightly dampen the cloth with distilled water or a screen-safe cleaning solution. Never spray liquid directly onto the screen.
- **Avoid Pressure:** Do not press or poke the screen with sharp objects, as this can cause permanent damage to the LCD panel.
- **Temperature:** Avoid exposing the screen to extreme temperatures or direct sunlight for prolonged periods.



Image: The front surface of the 15.6-inch LCD screen, showcasing its sleek, black design. Regular gentle cleaning is recommended to maintain its clear display.

## TROUBLESHOOTING

If you encounter issues with your new LCD screen, consider the following troubleshooting steps:

Problem	Possible Cause	Solution
No display / Black screen	Loose or improperly connected display cable; Incorrect screen model; Faulty backlight.	<ol style="list-style-type: none"><li>1. Ensure the 40PIN connector is securely seated.</li><li>2. Verify the screen model (LQ156M1JW26) and resolution (1920x1080 FHD) match your laptop's requirements.</li><li>3. Test with an external monitor to confirm laptop functionality.</li></ol>
Flickering or distorted image	Loose cable connection; Driver issues; Electromagnetic interference.	<ol style="list-style-type: none"><li>1. Recheck the display cable connection.</li><li>2. Update or reinstall your laptop's graphics drivers.</li><li>3. Ensure no strong magnetic fields are near the laptop.</li></ol>
Dead pixels or lines on screen	Manufacturing defect; Physical damage during installation.	<ol style="list-style-type: none"><li>1. Inspect the screen for any visible damage.</li><li>2. If newly installed, contact customer support for potential replacement under warranty.</li></ol>

## SPECIFICATIONS

Attribute	Detail
-----------	--------

Item Type	Laptop LCD Screen
Material	LCD
Screen Size	15.6 inches
Resolution	1920x1080 FHD
Connector Type	40PIN Non-
Model Number (Screen)	LQ156M1JW26
Item Model Number (Product)	Gaoxyzthy30cok4bf68
Package Dimensions	16.93 x 11.81 x 2.76 inches
Item Weight	1.77 pounds
Manufacturer	Gaoxyzthy
ASIN	B0F3ZP5CRL
Date First Available	April 7, 2025



*Image: An angled perspective of the 15.6-inch LCD screen, highlighting its slim profile and black border.*



*Image: The rear side of the LCD screen, revealing the protective backing and the location of the internal circuitry and connectors.*

## WARRANTY AND SUPPORT

---

For warranty information and technical support, please refer to the documentation provided with your purchase or contact Gaoxyzthy customer service directly. Ensure you have your product model number (LQ156M1JW26) and ASIN (B0F3ZP5CRL) ready when seeking support.

For further assistance, please visit the official Gaoxyzthy support website or contact their customer service channels.



© 2025 Gaoxyzthy. All rights reserved.

This manual is for informational purposes only. Gaoxyzthy is not responsible for any damage or injury caused by improper installation or use of this product.