

[Manuals.plus](#) /

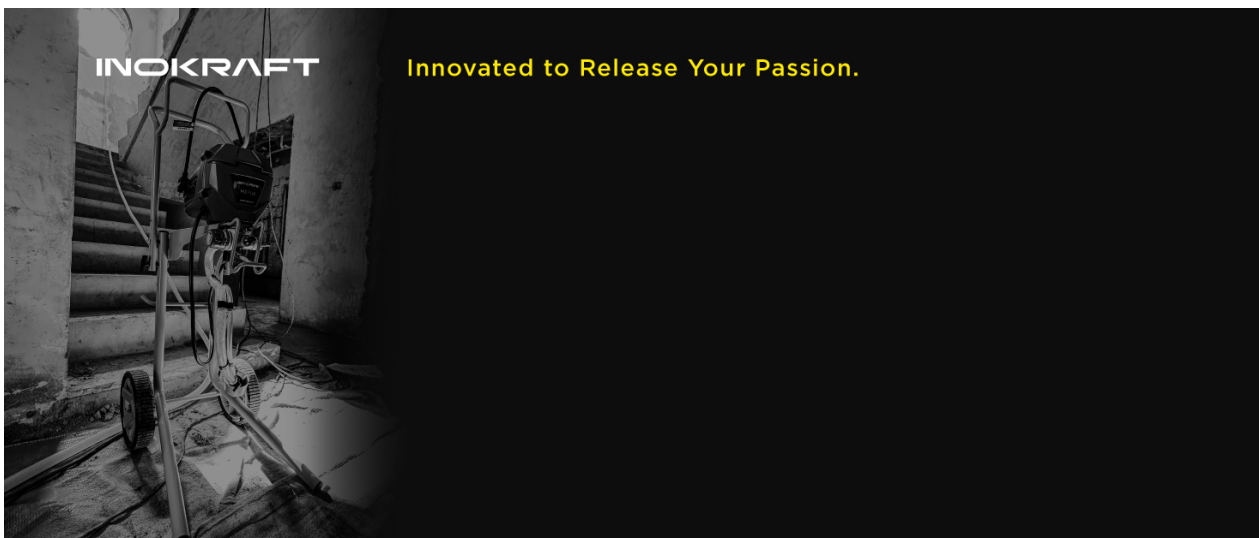
> [InoKraft](#) /

> InoKraft D1 LVLP Air Spray Gun Premium Kit Instruction Manual

## InoKraft D1 LVLP Spray Gun

# InoKraft D1 LVLP Air Spray Gun Premium Kit

Instruction Manual



InoKraft: Innovated to Release Your Passion.

## 1. SAFETY INFORMATION

**WARNING:** This product may contain chemicals known to the State of California to cause cancer, birth defects, or other reproductive harm. Always wear appropriate safety gear when using this product, including but not limited to respirators, safety glasses, and gloves.

- Keep out of reach of children and pets.
- Do not dispose of in regular trash. Follow local regulations for disposal of paint and paint-related materials.
- Ensure adequate ventilation in the work area.
- Always wear personal protective equipment (PPE) such as safety glasses, gloves, and a respirator.

## 2. PRODUCT OVERVIEW

The InoKraft D1 LVLP Air Spray Gun Premium Kit is designed for efficient and precise paint application across various projects, from automotive painting to household DIY tasks. Its Low Volume Low Pressure (LVLP) technology ensures high transfer efficiency and fine atomization for a smooth finish.



# Automotive Painting

**Furniture Painting**      **Small Objects Painting**      **DIY Painting**

## Wide Application

Image: The InoKraft D1 LVLP Air Spray Gun, a versatile tool for various painting applications.

## Key Features:

- **LVLP Technology:** Ensures high paint utilization rate, reducing paint waste and environmental impact.
- **Fine Atomization:** Delivers professional painting quality with smooth and even coatings.
- **Adjustable Controls:** Features knobs for pattern adjustment, fluid volume control, and air flow regulation.
- **Durable Construction:** Made with a one-piece forged aluminum body and Teflon coating for easy cleaning and longevity.
- **Versatile Nozzles:** Includes 1.3mm, 1.5mm, and 1.7mm nozzles for various coating types.



Image: Illustrates the professional painting quality achieved with fine atomization and smooth coating, highlighting high transfer efficiency.

## Included Components:

- D1 LVLP Air Spray Gun
- 650cc Hard Cup
- Disposable Cup Liners and Filter Lids (5 pieces)
- Cup Sealing Plugs (2 pieces)
- 1.3mm, 1.5mm, 1.7mm Nozzle Set
- Air Pressure Regulator
- Oil-Water Separator
- Wrench + Cleaning Kit
- PTFE Tape
- 3M PPS 1.0 Paint Cup Adaptor
- Storage Box
- User Manual & Quick Start-Up Guide
- Test Record Card



Image: A comprehensive view of all components included in the InoKraft D1 LVLP Air Spray Gun Premium Kit, neatly arranged.

### 3. SETUP AND START-UP

Proper setup is crucial for optimal performance and safety. Follow these steps to prepare your spray gun for use.

Video: Detailed guide on how to set up and start your InoKraft D1 LVLP Air Spray Gun, including assembly and initial

adjustments.

1. **Install the Filter:** Insert the filter into the gun's inlet.
2. **Attach the Paint Cup:** Screw the paint cup clockwise onto the spray gun. If using a disposable cup system, ensure the adapter is correctly installed.
3. **Connect Air Pressure Regulator and Oil-Water Separator:** These are optional but recommended for optimal performance. Connect them to the air inlet connector. Use PTFE tape for a tight seal to prevent air leakage.
4. **Connect an Air Hose:** Use a 1/4-inch air hose to connect to the oil-water separator or directly to the inlet connector.
5. **Adjust Air Pressure:** Turn the air pressure regulator knob clockwise to close the air inlet. Hold the gun trigger, then turn the air pressure regulator knob counter-clockwise to raise the air pressure up to 3.0 bar (approximately 43.5 PSI). The maximum recommended pressure is 3.5 bar (50 PSI).
6. **Adjust Fluid Adjustment Knob:** Turn the fluid adjustment knob clockwise to the minimum to prevent the needle from moving.
7. **Adjust Pattern Adjustment Knob:** Turn the pattern adjustment knob counter-clockwise to fully open the fan.
8. **Adjust Air Adjustment Knob:** Turn the air adjustment knob counter-clockwise to fully open it.

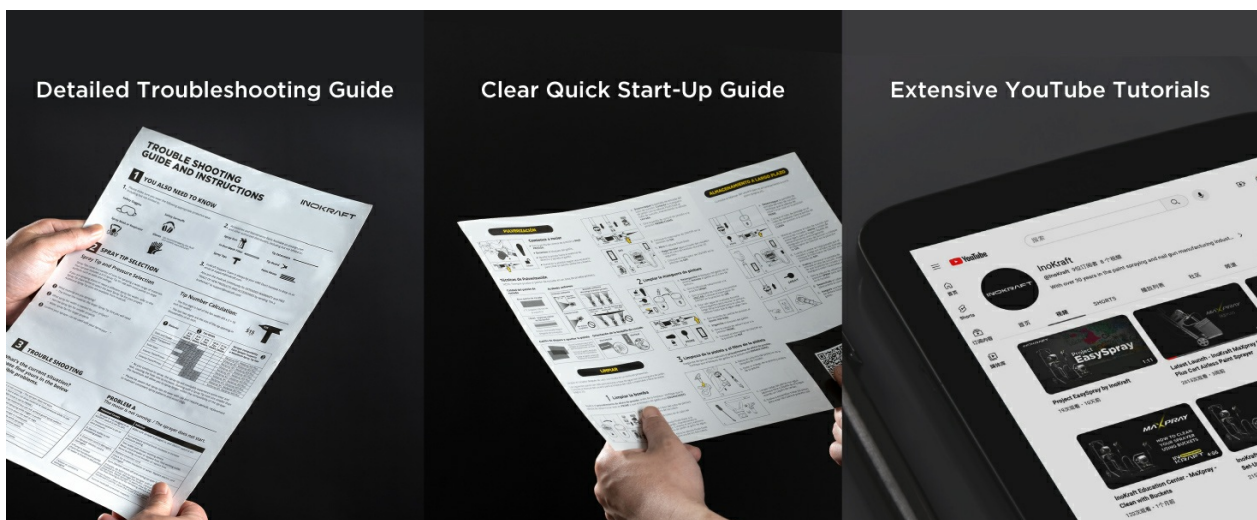


Image: Visual guide for the easy start-up process of the spray gun.

## Air Compressor Requirements:

For optimal performance, ensure your air compressor meets the following specifications:

- Air Consumption: 3.0+ SCFM @ 90 PSI
- Large Area Projects: 20+ Gallon Tank
- Medium & Small Area Projects: 8+ Gallon Tank

### For a Variety of Coating

	1.3mm	1.5mm	1.7mm	2.0mm
Sealant				•
Primer		•	•	
Intermediate Coat	•	•		
Clear Coat	•			
Base Coat		•	•	
Premium Paint	•	•		

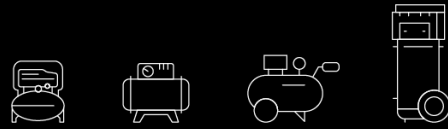
It is not Recommended to Use Latex or Paints with a Viscosity Higher than 25 (DIN-4)

For Reference Only

Please Refer to Paint Manufacturer's Recommendations and Test the Effect in Advance

### For Any Air Compressor Type

Budget & Environment Friendly



Recommended Air Compressor

Air Consumption: 3.0+SCFM@90PSI

Large Area: 20+Gallon

Medium & Small Area: 8+Gallon

Image: Recommended air compressor sizes for various project scales.

## 4. OPERATING INSTRUCTIONS

Achieve a professional finish by following these operating guidelines.



## High Paint Utilization Rate

- ✓ Cost Saved on Paint
- ✓ Less Environmental Pollution



Image: A user demonstrating the spray gun in action, painting a wooden chair.

1. **Maintain Distance:** Keep the spray gun 6 to 8 inches from the object surface.
2. **Perpendicular Movement:** Keep the spray gun perpendicular to the surface during movement to ensure even coating.
3. **Trigger Activation:** Lightly press the trigger to start the stroke, then press hard for full spray. This technique helps achieve a smooth gun activation and saves paint.
4. **Spray Speed:** The recommended speed for moving the spray gun is about 12 to 15 inches per second.
5. **Overlapping:** When spraying large areas, use a reciprocating method. The overlap area of the spray width should be about 50%.
6. **Adjusting Spray Pattern:** Rotate the air cap at 90 degrees to change the spray pattern between vertical

and horizontal.

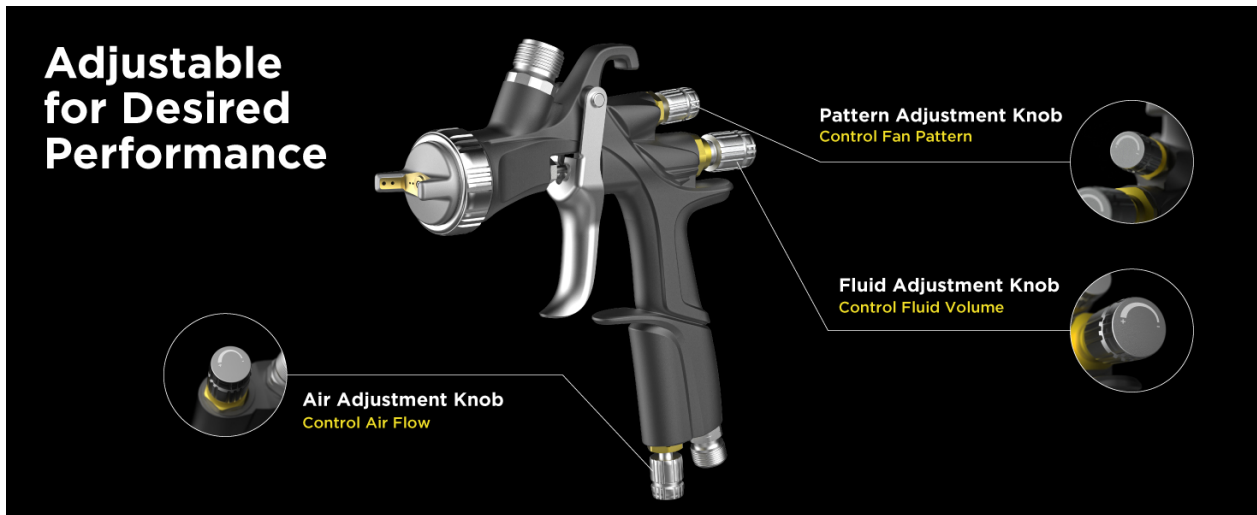


Image: Details the adjustable controls for pattern, fluid volume, and air flow, allowing for desired performance.

## 5. MAINTENANCE

Regular cleaning and maintenance will extend the life of your spray gun and ensure consistent performance.

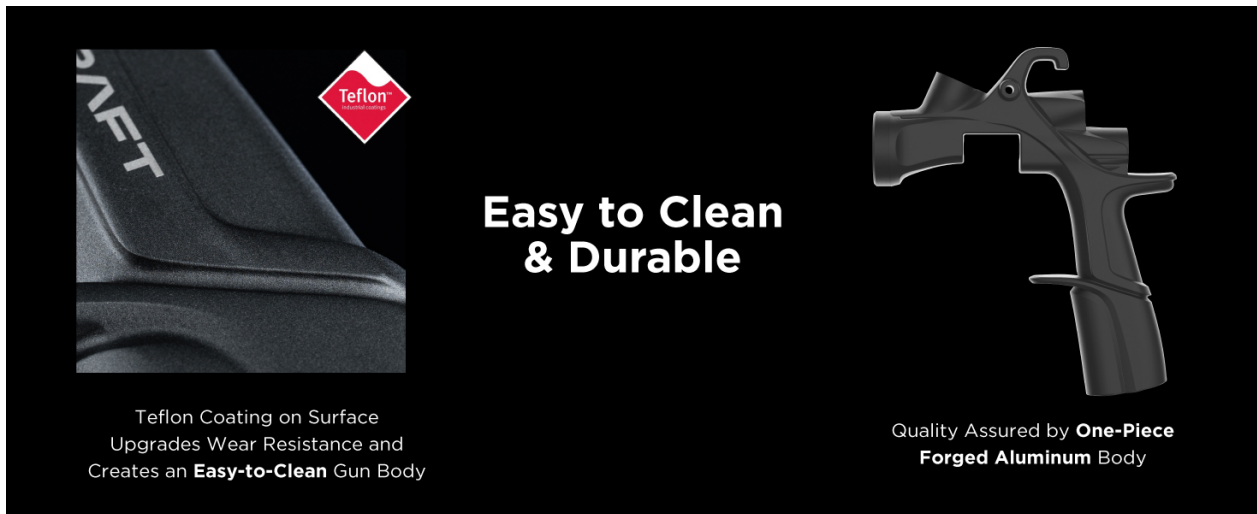


Image: Highlights the easy-to-clean Teflon coating and durable one-piece forged aluminum body of the spray gun.

- After each use, disconnect the air hose and return any excess paint to the original container.
- Clean the paint cup and gun thoroughly with appropriate cleaning solutions.
- Disassemble the air cap, fluid nozzle, and needle for detailed cleaning.
- Use the provided cleaning brushes and tools to remove any paint residue.
- Ensure all parts are dry before reassembling.
- Store the spray gun in its storage box in a clean, dry place.

## 6. TROUBLESHOOTING

Refer to this section for common issues and their solutions. For more detailed troubleshooting, consult the included user manual.

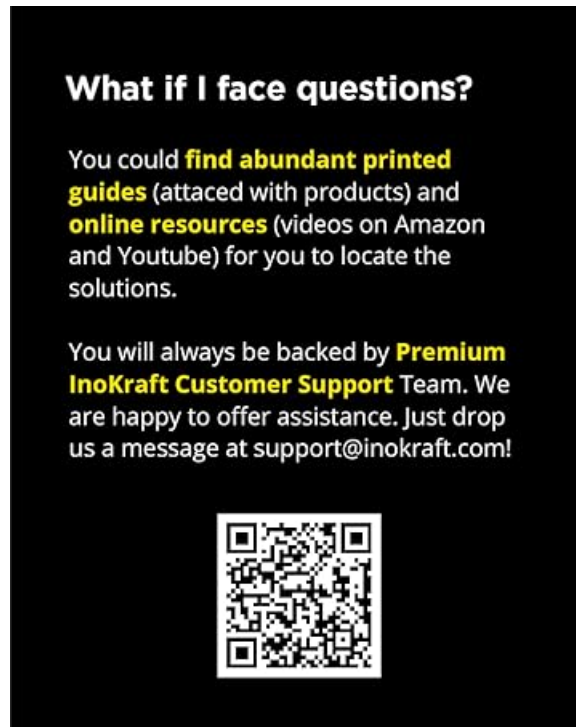


Image: A sample page from the troubleshooting guide, offering solutions to common problems.

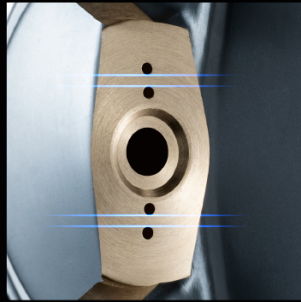
Problem	Potential Cause	Solution
Gun does not spray	Fluid nozzle is clogged	Clean fluid nozzle
	Air cap is clogged	Clean air cap
	Paint cup not tight enough	Tighten the paint cup
Uneven spray pattern	Incorrect air cap position	Adjust air cap to desired position
	Paint viscosity too high	Thin paint according to manufacturer's recommendations

## 7. SPECIFICATIONS

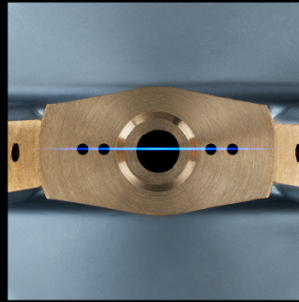
- **Brand:** InoKraft
- **Model Name:** D1 LVLP Spray Gun
- **Model Number:** LVLP Spray Gun + Disposable Paint Cups
- **Manufacturer Part Number:** D1
- **Tank Volume:** 650 Milliliters
- **Color:** Gray
- **Material:** Plastic (for cup), Forged Aluminum (gun body)

- **Item Weight:** 1.61 Kilograms
- **Item Dimensions W x H:** 11.61"W x 6.5"H
- **Power Source:** AC (for compressor, gun is air-powered)
- **Recommended Uses:** Painting (Cars, House DIY, Furniture, Small Objects)

## CNC Precision Machined Nozzle



Equally Spaced



Horizontally Aligned



Smooth Holes

Image: Illustrates the CNC precision machined nozzle, ensuring equally spaced, horizontally aligned, and smooth holes for consistent spray.

## 8. WARRANTY AND SUPPORT

InoKraft is committed to providing user-friendly, durable, and cost-effective tools. For any questions or assistance, please refer to the resources below.

- **Online Resources:** Abundant printed guides (attached with products) and online resources (videos on Amazon and YouTube) are available.
- **Customer Support:** You will always be backed by the Premium InoKraft Customer Support Team.

**Contact Us:** For assistance, please email [support@inokraft.com](mailto:support@inokraft.com).

**INOKRAFT**

InoKraft believes that DIY is not a fad, but an attitude toward life. Our goal is to create user-friendly, durable and cost-effective tools for DIY enthusiasts, allowing you to truly enjoy the joy of hands-on creation.

Scan for additional support and resources.

