



[Manuals.plus](#) /

› [SIEAERDREWI](#) /

› SIEAERDREWI TPA3110 Digital Power Amplifier Module User Manual

SIEAERDREWI TPA3110 Digital Power Amplifier Module

SIEAERDREWI TPA3110 Digital Power Amplifier Module User Manual

Model: TPA3110 Digital Power Amplifier Module

Brand: SIEAERDREWI

INTRODUCTION

This manual provides detailed instructions for the installation, operation, and maintenance of the SIEAERDREWI TPA3110 Digital Power Amplifier Module. Please read this manual thoroughly before use to ensure proper functionality and safety.

PRODUCT OVERVIEW AND FEATURES

The TPA3110 Digital Power Amplifier Module is a compact, dual-channel stereo amplifier designed for various electronic projects, including DIY speakers. It delivers 2x15W output and operates on a 12V DC power supply.

- High-quality electronic components for reliable and long-lasting performance.
- User-friendly design for easy installation and operation.
- Versatile applications, suitable for industrial, automotive, and household electronics.

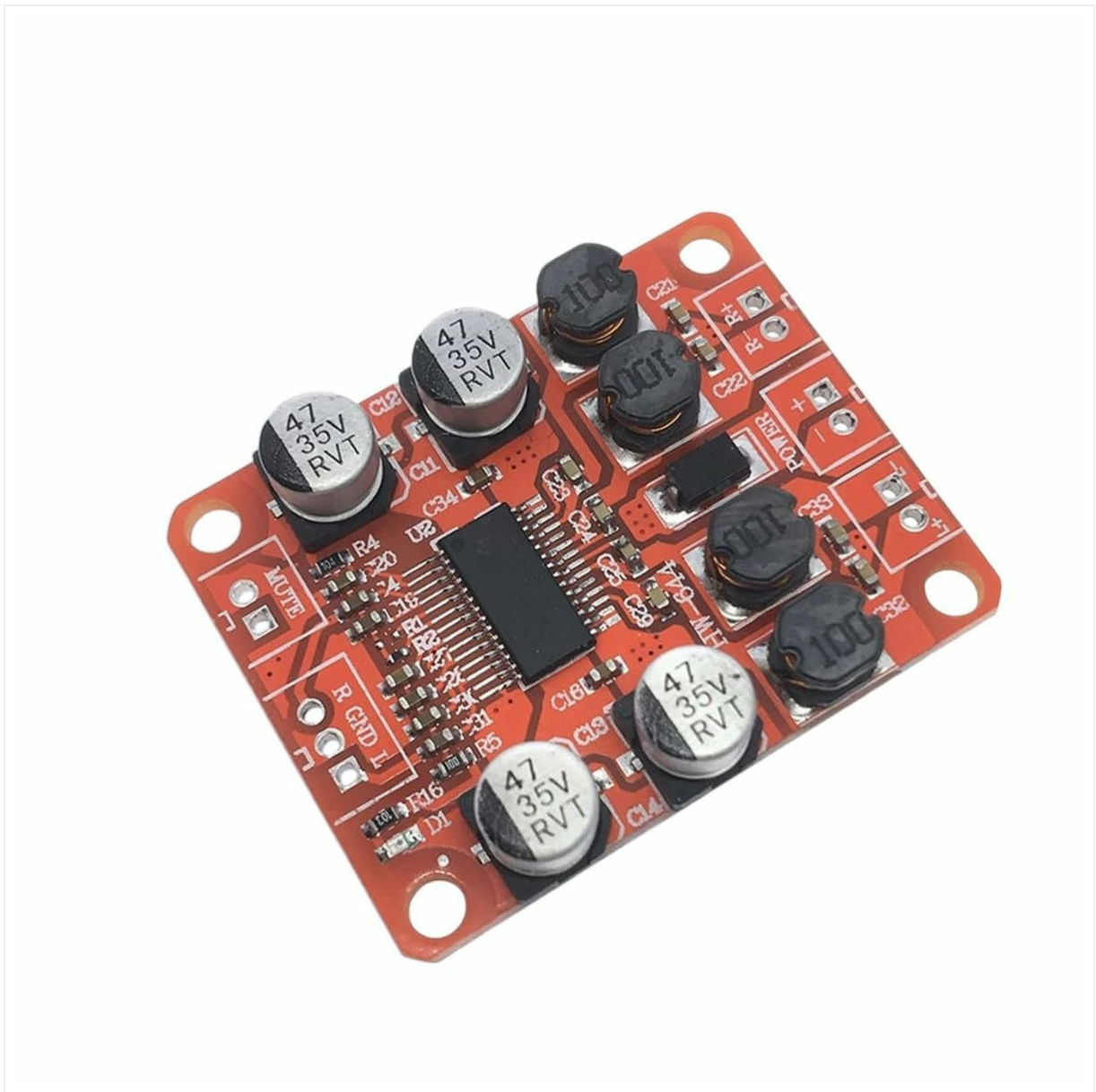


Image Description: An overhead view of the TPA3110 Digital Power Amplifier Module, showcasing its compact PCB design, integrated circuit, capacitors, and inductors. Input and output terminals are visible for power, audio input, and speaker connections.

SPECIFICATIONS

| Feature | Detail |
|----------------|--|
| Model | TPA3110 Digital Power Amplifier Module |
| Output Power | 2 x 15W |
| Channels | Dual Channel Stereo |
| Power Supply | DC 12V |
| Component Type | Digital Power Amplifier |
| Board Type | PCB |

SAFETY INSTRUCTIONS

- Ensure the power supply voltage matches the module's requirements (DC 12V). Incorrect voltage can damage the module.
- Disconnect power before making any connections or disconnections.
- Avoid short-circuiting the output terminals.
- Handle the module with care to prevent damage to sensitive electronic components.
- Keep the module away from moisture and extreme temperatures.

SETUP AND INSTALLATION

1. **Power Connection:** Connect a stable DC 12V power supply to the "POWER" terminals (+ and -) on the module. Observe polarity.
2. **Audio Input:** Connect your audio source (e.g., smartphone, MP3 player) to the "L GND R" input terminals. "L" is for the left channel, "R" for the right channel, and "GND" is the common ground.
3. **Speaker Output:** Connect your speakers to the "L+" "L-" and "R+" "R-" output terminals. Ensure correct polarity for each speaker. The module supports 2x15W speakers.
4. **Mounting (Optional):** Secure the PCB to a stable surface using the mounting holes provided, if desired, to prevent movement and potential damage.



Image Description: A collection of various electronic components including resistors, capacitors, diodes, and integrated circuits, illustrating the types of parts commonly used in electronic designs like the amplifier module.

OPERATING INSTRUCTIONS

1. After all connections are securely made, apply power to the module.
2. Start playback from your audio source.
3. Adjust the volume from your audio source. The module amplifies the incoming signal.
4. The "MUTE" pin can be used to mute the output if connected to a control circuit (advanced use).

MAINTENANCE

- Keep the module clean and free from dust. Use a soft, dry cloth for cleaning.
- Regularly check connections for looseness or corrosion.
- Avoid exposing the module to direct sunlight or excessive heat, which can degrade component lifespan.

TROUBLESHOOTING

| Problem | Possible Cause | Solution |
|--------------------|----------------------------------|---|
| No Sound Output | Incorrect power connection | Verify DC 12V power supply and polarity. |
| No Sound Output | Incorrect audio input connection | Check audio source and input cable connections. |
| No Sound Output | Incorrect speaker connection | Ensure speakers are correctly wired to output terminals with proper polarity. |
| Distorted Sound | Overdriven input signal | Reduce volume from the audio source. |
| Distorted Sound | Faulty speaker | Test with a different speaker. |
| Module Overheating | Insufficient ventilation | Ensure adequate airflow around the module. |

WARRANTY AND SUPPORT

SIEAERDREWI products are manufactured with high-quality components and undergo rigorous testing.

For technical assistance or support, please contact SIEAERDREWI customer service. Our knowledgeable team is available to answer any questions or concerns you may have.

Please refer to your purchase documentation for specific warranty terms and conditions.