

be quiet! BT002US

be quiet! Dark Mount Mechanical Keyboard BT002US User Manual

INTRODUCTION

The be quiet! Dark Mount Mechanical Keyboard (Model BT002US) is a high-performance peripheral designed for gaming and productivity. It features tactile, hot-swappable, and pre-lubricated silent switches, ensuring a precise yet quiet typing experience. The modular design includes a detachable Numpad and Media Dock, offering unparalleled customization and ergonomic flexibility. With programmable ARGB keys, quality PBT double-shot keycaps, and advanced sound-absorbing layers, the Dark Mount keyboard delivers a premium user experience.

SETUP

Package Contents

- be quiet! Dark Mount Mechanical Keyboard
- Detachable Numpad
- Media Dock
- Two-part Magnetic Cushioned Palm Rest
- 2m USB-A-to-C Cable

Connecting the Keyboard

The Dark Mount keyboard offers both wired and wireless connectivity options.

1. **Wired Connection:** Connect the provided 2m USB-A-to-C cable from your computer's USB port to the USB-C port on the keyboard.
2. **Bluetooth Connection:** Ensure Bluetooth is enabled on your device. On the keyboard, press and hold the Bluetooth pairing button (usually indicated by a Bluetooth icon) for a few seconds until the indicator light flashes. Select "be quiet! Dark Mount" from your device's Bluetooth settings to pair. The keyboard supports multiple Bluetooth profiles for switching between devices.

Attaching Modular Components

The Numpad and Media Dock are designed for flexible placement:

- **Numpad:** The detachable Numpad can be magnetically attached to either the left or right side of the main keyboard unit. It can also be removed entirely for a more compact setup.
- **Media Dock:** The Media Dock, featuring dedicated media keys and a display, can be mounted in two positions: on the left or right side of the main keyboard.
- **Palm Rest:** The two-part magnetic cushioned Palm Rest snaps onto the keyboard. The segment under the Numpad can also be attached to either side, or removed.

Unparalleled modularity with hot-swappable Numpad and Media Dock



Image: The be quiet! Dark Mount Mechanical Keyboard showcasing its unparalleled modularity with a detachable Numpad and Media Dock, allowing for flexible configurations.

DARK MOUNT

DIMENSIONS (MM) ▶



V1/25
We do not take responsibility for typographical errors.

be quiet!®

Image: Detailed dimensions of the Dark Mount Mechanical Keyboard in millimeters, illustrating its compact yet full-featured design.

Your browser does not support the video tag.

Video: An official product video demonstrating the modular features of the Dark Mount keyboard, including the detachable Numpad and Media Dock, highlighting its versatile design.

OPERATING INSTRUCTIONS

Key Features and Ergonomics

- **Silent Tactile Switches:** The keyboard is equipped with pre-lubricated silent tactile black switches, featuring PA66 nylon housing and POM stems for a smooth, quiet, and precise typing experience.
- **Sound-Absorbing Layers:** Three layers of foam and silicone padding, including a bonus layer in the space bar, effectively mute echoing noises for a truly quiet operation.
- **Durable Construction:** A black brushed aluminum plate provides durability and a sleek aesthetic. PBT double-shot injection keycaps resist wear and tear, ensuring longevity.
- **Ergonomic Design:** Stackable, magnetic feet allow for three different typing angles (3°, 6°, or 9°), and the magnetic two-part Palm Rest supports a natural hand position.

**Factory-lubricated mechanical be quiet!
Silent Switches offer speed, precision, and
accuracy with a clearly noticable tactile
actuation point**

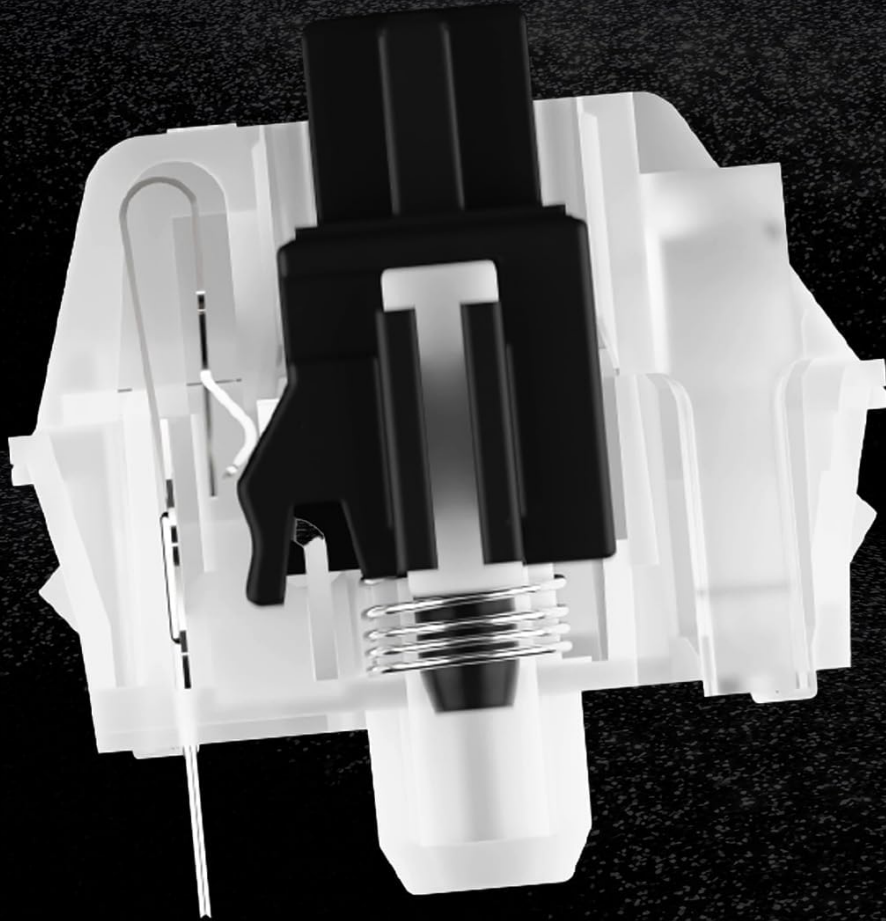


Image: A detailed view of the factory-lubricated silent tactile switch, highlighting its internal components designed for speed, precision, and a noticeable tactile actuation point.

3 layers of sound-proofing with **silicone** and **foam** for extra silent keystrokes

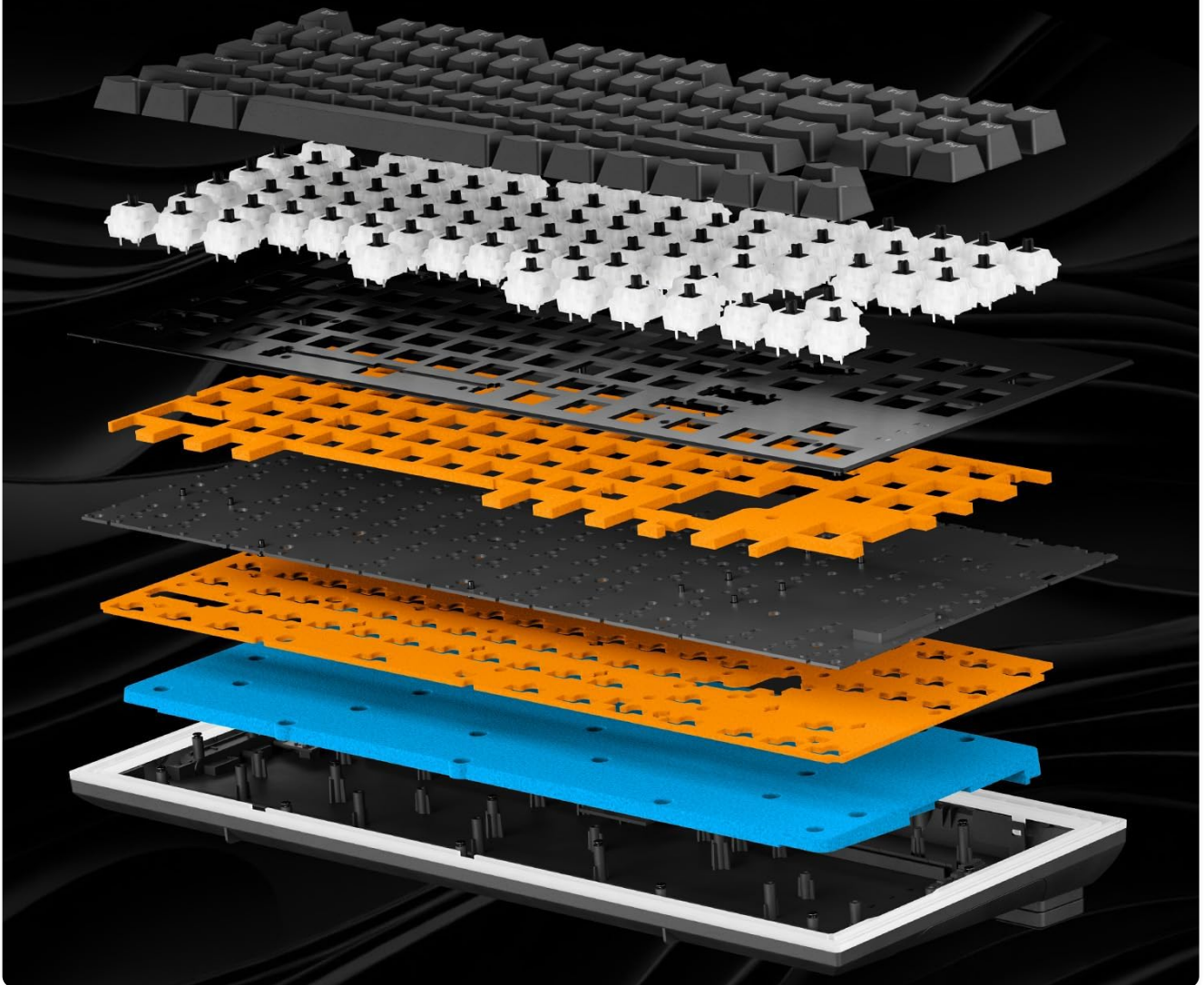


Image: An exploded view illustrating the three layers of sound-proofing, including silicone and foam, designed to ensure extra silent keystrokes.

High-quality PBT double-shot keycaps with translucent legends that will never fade or wear off



Image: A close-up of the high-quality PBT double-shot keycaps, featuring translucent legends that are resistant to wear and fading.

Customization and Lighting

- **Programmable Display Keys:** Eight dedicated 115x115 Display Keys can be fully customized to launch applications, stream, or bind macros. Icons can be selected from a preconfigured library or uploaded in various formats (GIFs, JPGs, PNGs).
- **Per-Key ARGB Lighting:** Maximize customization with per-key ARGB lighting. Highlight specific keys or create dynamic effects. An arched diffuser in each switch enhances the brilliance of translucent keycap legends.
- **Atmospheric Lightbar:** A surrounding lightbar creates atmospheric ARGB LED lighting on your desk, complementing any RGB gaming PC setup.

8 customizable Display Keys



Image: The keyboard's 8 customizable display keys, each capable of showing custom icons or animated GIFs for quick access to functions or applications.

Per-key illumination and customizable ARGB lighting around the edges for atmospheric effects



Image: The keyboard illuminated with per-key ARGB lighting and a surrounding lightbar, creating dynamic and atmospheric effects.

be quiet! IO Center Software

The be quiet! IO Center software provides full control over your Dark Mount keyboard and other compatible be quiet! devices. It allows you to:

- Configure elaborate per-key lighting effects.
- Remap keys and set up macros in different profiles.
- Access a web-based application for convenience.

Customize your Dark Mount with the be quiet! IO Center software

 **io center**
 **io center | web**



Image: A visual representation of the be quiet! IO Center software interface, demonstrating its capabilities for customizing keyboard settings and lighting.

MAINTENANCE

Cleaning

- Regularly clean the keycaps with a soft, damp cloth to remove dust and grime.
- For deeper cleaning, carefully remove keycaps using a keycap puller and clean the keyboard base with compressed air.

Keycap and Switch Replacement

The Dark Mount keyboard features hot-swappable switches, allowing for easy replacement without soldering:

- Use a switch puller to gently remove the desired switch.
- Align the pins of the new switch with the sockets on the PCB and press firmly until it clicks into place.

TROUBLESHOOTING

Connectivity Issues

- **Wired:** Ensure the USB-C cable is securely connected to both the keyboard and the computer. Try a different USB port or cable.
- **Bluetooth:** Verify Bluetooth is enabled on your device. Re-initiate pairing mode on the keyboard and re-select it from your device's Bluetooth settings. Ensure the keyboard is charged.

Lighting and Software Problems

- **LED Effects:** If LED effects are stuck or not functioning, ensure the be quiet! IO Center software is running and updated. Check for any conflicting software.
- **IO Center:** If the software is not connecting or causing display issues, try updating the keyboard firmware through the IO Center. Ensure no network restrictions are blocking the application.

Media Dock Functionality

- **Volume Wheel:** If the volume adjustment is too coarse, check software settings for finer control options.
- **Display Issues:** If the Media Dock display is stuck or not updating, restart the IO Center software or the computer.

SPECIFICATIONS

Feature	Detail
Product Dimensions	17.95 x 10.08 x 2.05 inches
Item Weight	5.24 pounds
Manufacturer	be quiet!
Compatible Devices	PC
Connectivity Technology	USB-C
Keyboard Description	Mechanical
Recommended Uses	Gaming
Special Feature	Hot-Swappable
Style	Dark Mount Tactile
Material	Aluminum
Included Components	Detachable Numpad, Media Dock
Power Source	Corded Electric

WARRANTY

Please refer to the product packaging or the official be quiet! website for detailed warranty information specific to your region and purchase date. Typically, be quiet! products come with a limited manufacturer's warranty covering

defects in materials and workmanship.

SUPPORT

For further assistance, technical support, or to download the latest version of the be quiet! IO Center software and firmware updates, please visit the official be quiet! support website. You can also find FAQs and community forums there.