

Manuals+

[Q & A](#) | [Deep Search](#) | [Upload](#)

[manuals.plus](#) /

› [be quiet!](#) /

› [be quiet! Dark Mount Mechanical Keyboard User Manual](#)

be quiet! BT001US

be quiet! Dark Mount Mechanical Keyboard User Manual

Model: BT001US Dark Mount Linear

INTRODUCTION

This manual provides comprehensive instructions for the setup, operation, maintenance, and troubleshooting of your be quiet! Dark Mount Mechanical Keyboard. Please read this manual carefully before using the product to ensure optimal performance and longevity.

The be quiet! Dark Mount Mechanical Keyboard is designed for an unparalleled typing and gaming experience, featuring hot-swappable, factory-lubricated silent linear switches, a detachable numpad and media dock, programmable ARGB keys, and durable PBT double-shot keycaps.

PACKAGE CONTENTS

Upon opening the package, verify that all components are present:

- be quiet! Dark Mount Mechanical Keyboard
- Detachable Numpad
- Detachable Media Dock
- Two-part Magnetic Palm Rest
- USB-A-to-C Cable (2m)



Image: The be quiet! Dark Mount Mechanical Keyboard showcasing its modular design with the main keyboard, detachable numpad, and media dock, along with the two-part palm rest. The keyboard features vibrant ARGB lighting.

SETUP

Connecting the Keyboard

1. Connect the USB-C end of the provided cable to the USB-C port on the back of the main keyboard unit.
2. Connect the USB-A end of the cable to an available USB-A port on your computer.
3. The keyboard will be automatically recognized by your operating system.

Attaching Modular Components

The Dark Mount keyboard offers extensive modularity for personalized setup.

- **Numpad:** The numpad can be magnetically attached to either the left or right side of the main keyboard. Align the connectors and gently push until it clicks into place.
- **Media Dock:** The media dock, featuring dedicated media keys and a display, can also be mounted on either the left or right side of the main keyboard. Ensure proper alignment for secure attachment.
- **Palm Rest:** The two-part magnetic palm rest snaps onto the front edge of the keyboard, providing ergonomic support. The segment for the numpad can be attached to either side, matching the numpad's position.

Unparalleled modularity with hot-swappable Numpad and Media Dock



Image: An exploded view illustrating the modularity of the be quiet! Dark Mount keyboard, highlighting the hot-swappable numpad and media dock that can be positioned on either side of the main keyboard.

OPERATING INSTRUCTIONS

Basic Keyboard Functions

The Dark Mount keyboard functions as a standard QWERTY mechanical keyboard. All keys are pre-programmed for their standard functions.

Customizable Display Keys

The numpad features 8 dedicated 115x115 Display Keys that can be fully customized. These keys can be programmed to launch applications, execute macros, or display custom images and animated GIFs.

8 customizable Display Keys



Image: A close-up view of the 8 customizable display keys located on the detachable numpad, showing various pre-configured icons. These keys offer personalized functionality and visual feedback.

Media Dock Controls

The media dock provides dedicated controls for audio and video settings. Use the integrated display and buttons to manage playback, volume, and other media functions.

Factory-lubricated mechanical be quiet! Silent Switches offer speed, precision, and accuracy with linear actuation

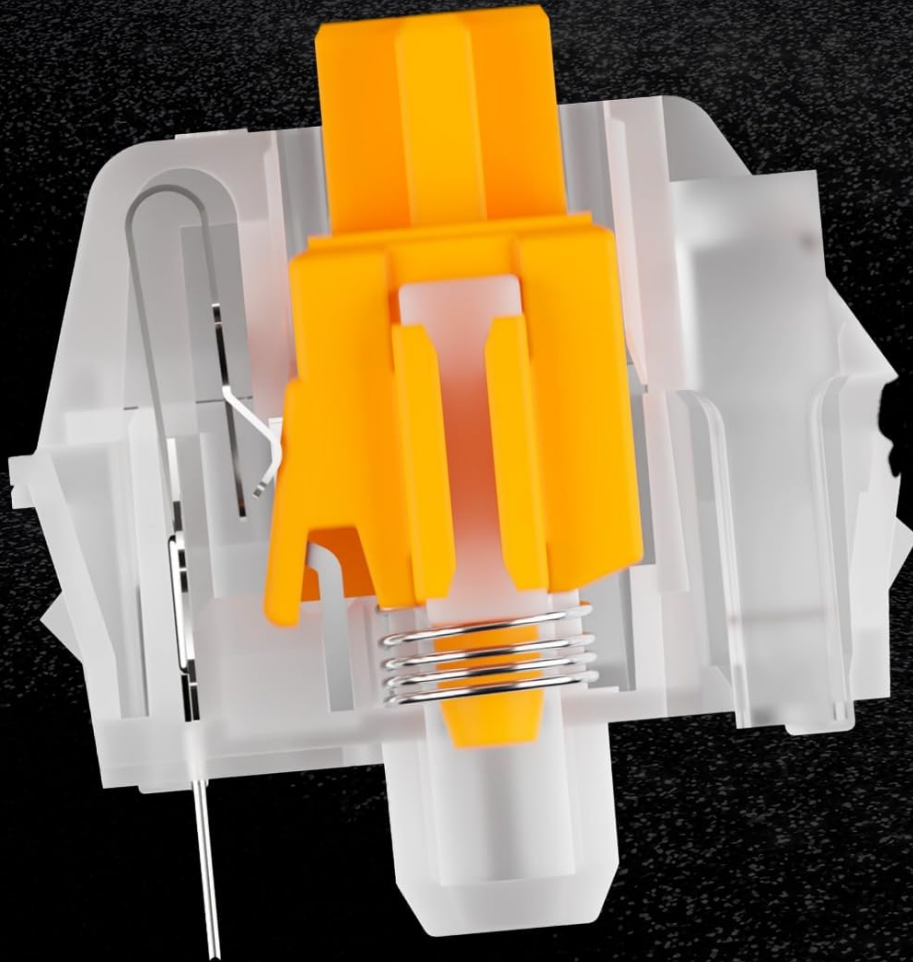


Image: A detailed view of the media dock, showcasing its integrated display and control buttons for managing audio and video settings during use.

IO Center Software

To unlock the full potential of your Dark Mount keyboard, download and install the be quiet! IO Center software. This software allows you to:

- Configure elaborate per-key ARGB lighting effects.
- Remap keys and set up macros.
- Create and manage different profiles for various applications or games.
- Customize the 8 display keys on the numpad.

The IO Center software is designed to use minimal system resources. A web-based application is also available for configuration.

DARK MOUNT

DIMENSIONS (MM) ▶



V1/25
We do not take responsibility for typographical errors.

be quiet!®

Image: The be quiet! IO Center software logo displayed alongside the Dark Mount keyboard, emphasizing the software's role in customizing lighting and key functions.

MAINTENANCE

Cleaning the Keyboard

- Disconnect the keyboard from your computer before cleaning.
- Use a soft, lint-free cloth slightly dampened with water or a mild cleaning solution to wipe down the surfaces.
- Avoid using harsh chemicals, abrasive cleaners, or excessive moisture.
- For cleaning between keycaps, use compressed air to remove dust and debris.

Switch Maintenance

The Dark Mount keyboard features hot-swappable switches, allowing for easy replacement or customization without soldering. While the switches are factory-lubricated for longevity, if you choose to replace them:

- Use a keycap puller to carefully remove the keycap.
- Use a switch puller to gently remove the switch from the PCB.
- Insert a new 5-pin MX style switch, ensuring the pins align with the sockets on the PCB.
- Press firmly until the switch is seated securely.

3 layers of sound-proofing with **silicone** and **foam** for extra silent keystrokes

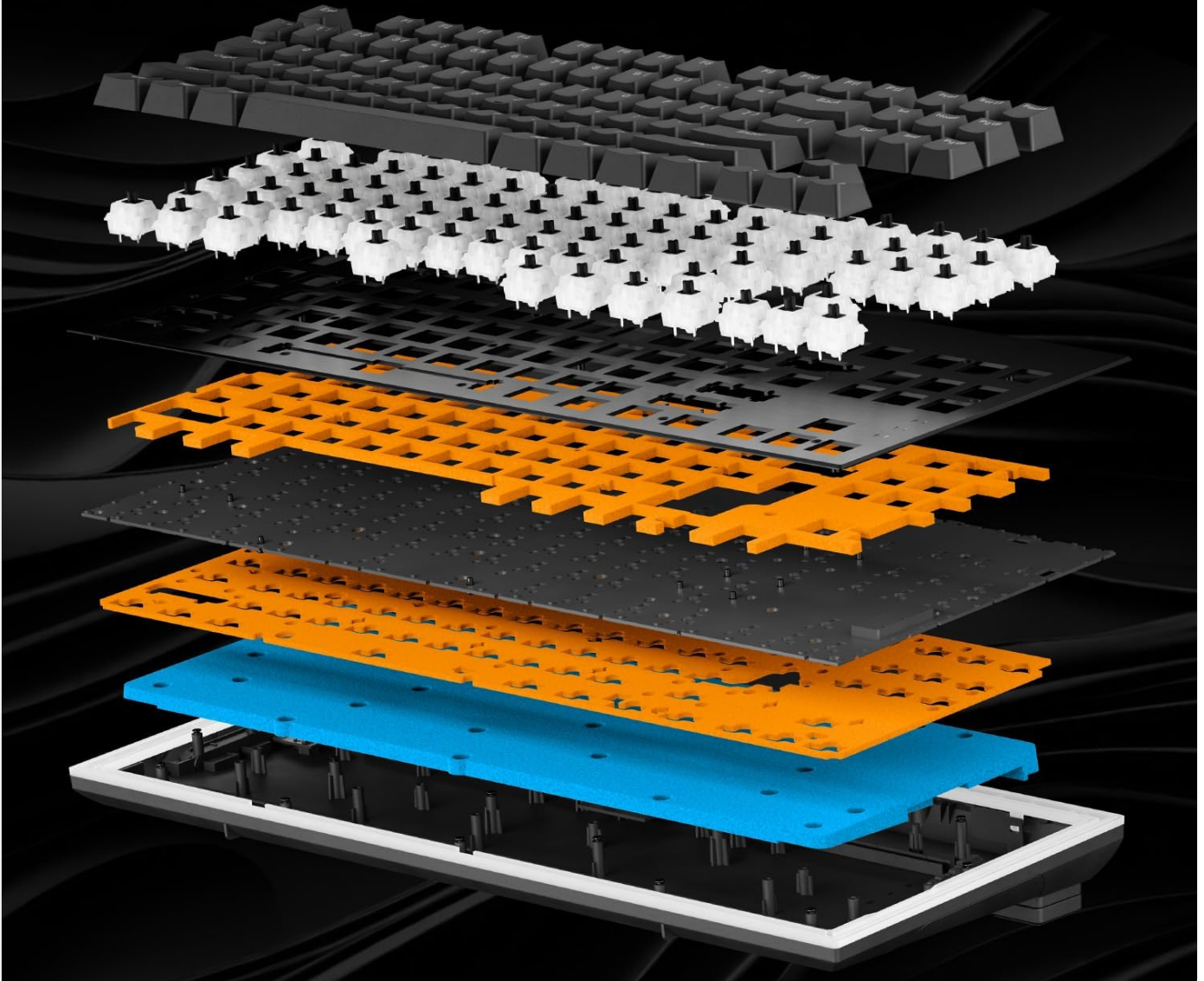


Image: A detailed diagram illustrating the internal components of a mechanical keyboard switch, highlighting the stem, spring, and housing. This visual aids understanding of the hot-swappable switch mechanism.

High-quality PBT double-shot keycaps with translucent legends that will never fade or wear off



Image: An exploded view of the keyboard's internal layers, demonstrating the three layers of sound-dampening foam and silicone padding designed to ensure silent keystrokes.

TROUBLESHOOTING

| Problem | Possible Cause | Solution |
|---------------------------|---|--|
| Keyboard not responding | Loose USB connection; Driver issue; Power issue. | Ensure USB cable is securely connected to both keyboard and computer. Try a different USB port. Restart your computer. Check device manager for driver issues. |
| Specific keys not working | Faulty switch; Debris under keycap. | Remove keycap and clear any debris. If issue persists, the switch may need replacement (hot-swappable feature). |

| Problem | Possible Cause | Solution |
|---|--|--|
| RGB lighting not working or incorrect | Software settings; Firmware issue; Windows 11 RGB controller conflict. | Check settings in be quiet! IO Center software. Ensure firmware is up to date. If using Windows 11, disable its native RGB controller as it may conflict. |
| Numpad/Media Dock not recognized | Improper attachment; Connection issue. | Ensure the numpad/media dock is securely and correctly attached to the main keyboard unit. Detach and reattach firmly. |
| IO Center software issues (e.g., settings not saving) | Software bug; Conflict with other software. | Ensure you have the latest version of the IO Center software. Try running the software as administrator. Consult be quiet! support for persistent software issues. |

SPECIFICATIONS

| Feature | Detail |
|----------------------|--|
| Model Number | BT001US |
| Keyboard Layout | QWERTY |
| Switch Type | Linear (Factory-lubricated, Silent) |
| Connectivity | USB-C (Detachable 2m USB-A-to-C cable) |
| Keycaps | PBT Double-Shot Injection |
| Lighting | Per-key ARGB, Lightbar surrounding keyboard |
| Modularity | Hot-swappable Numpad, Hot-swappable Media Dock, Two-part Magnetic Palm Rest |
| Display Keys | 8 customizable 115x115 Display Keys on Numpad |
| Sound Dampening | Triple-layered (foam between switches/PCB, foam under PCB, silicone padding in bottom housing) |
| Ergonomics | Stackable magnetic feet (3°, 6°, 9° angles), Magnetic cushioned two-part Palm Rest |
| Dimensions (approx.) | 456mm (W) x 174mm (D) x 52mm (H) (with palm rest and numpad/media dock attached) |
| Weight (approx.) | 5.09 pounds (2.31 kg) |

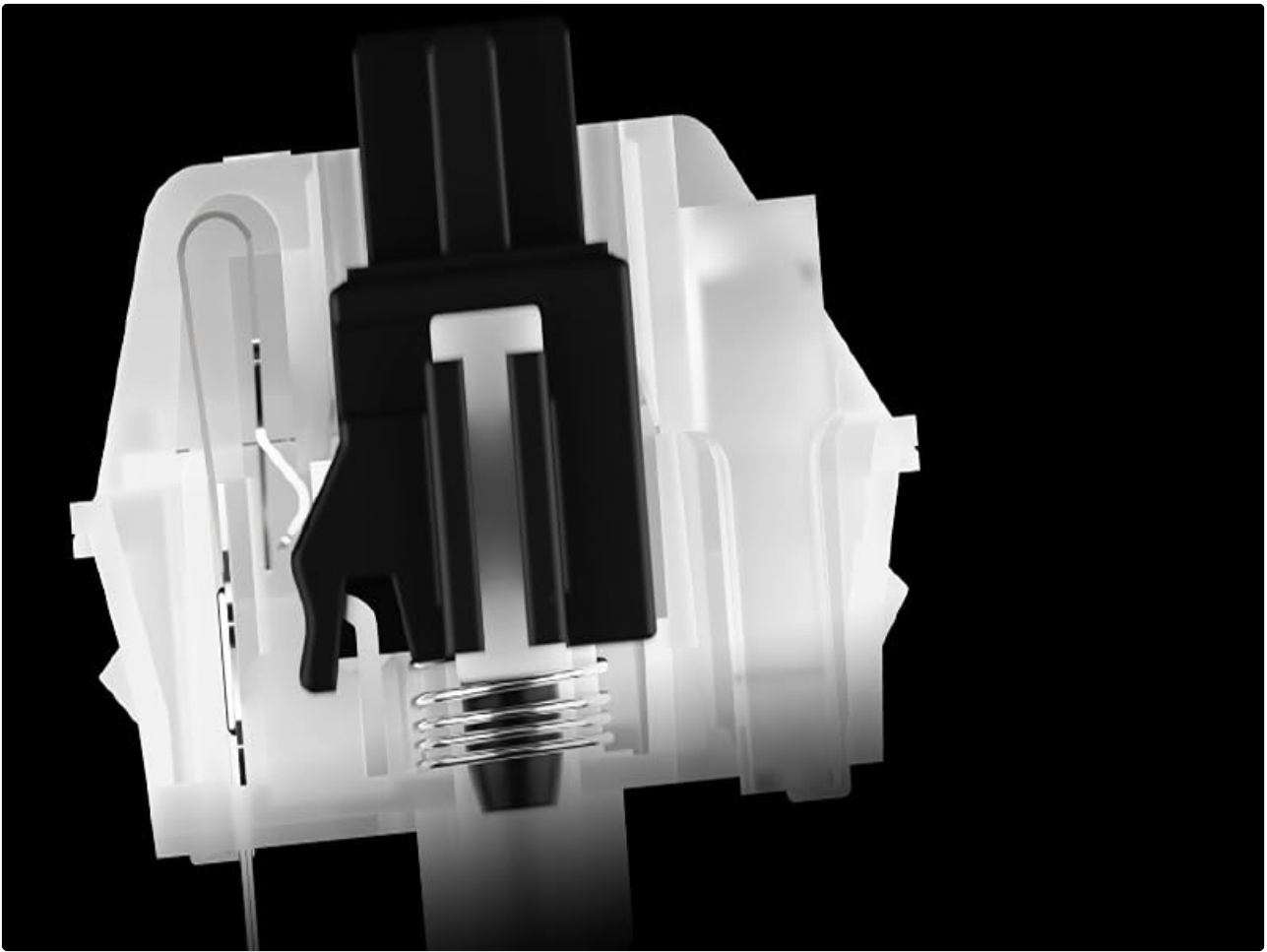


Image: A technical diagram showing the approximate dimensions of the be quiet! Dark Mount keyboard, including width, depth, and height, for precise fit and planning.

WARRANTY AND SUPPORT

Warranty Information

Your be quiet! Dark Mount Mechanical Keyboard is covered by a manufacturer's warranty. Please refer to the official be quiet! website or the warranty card included in your product packaging for detailed terms and conditions, including warranty period and coverage.

Customer Support

For technical assistance, troubleshooting beyond this manual, or warranty claims, please contact be quiet! customer support. You can find contact information and additional resources on the official be quiet! website:

www.bequiet.com

Please have your product model number (BT001US) and purchase details ready when contacting support.

IMPORTANT SAFETY INFORMATION

- Do not expose the keyboard to liquids or excessive moisture.
- Avoid extreme temperatures.
- Do not attempt to disassemble or repair the keyboard yourself, as this may void the warranty and cause damage.
- Keep out of reach of small children.

