

ANDTE ZJ-KBS-4A

ANDTE Automatic Condensate Pump (Model ZJ-KBS-4A) Instruction Manual

For HVAC/R Equipment, Air Conditioners, and Dehumidifiers

1. INTRODUCTION

This manual provides essential information for the safe and efficient installation, operation, and maintenance of your ANDTE Automatic Condensate Pump, Model ZJ-KBS-4A. This pump is designed to automatically remove condensate water from HVAC/R equipment, air conditioners, and dehumidifiers, ensuring optimal performance and preventing water damage.

2. SAFETY INFORMATION

Please read all safety instructions carefully before installation and operation.

- Always disconnect power before performing any installation, maintenance, or troubleshooting.
- Ensure the pump is installed in a location where it is protected from freezing temperatures.
- Do not pump flammable liquids or chemicals. This pump is designed for condensate water only.
- Ensure all electrical connections comply with local codes and regulations.
- The pump is equipped with a water level alarm and automatic shutdown function to prevent overflow. Do not bypass these safety features.
- Keep hands and foreign objects away from moving parts during operation.

3. PRODUCT OVERVIEW AND COMPONENTS

The ANDTE Automatic Condensate Pump is a compact and durable unit designed for reliable condensate removal. It features a high-performance motor and an integrated float switch for automatic operation.

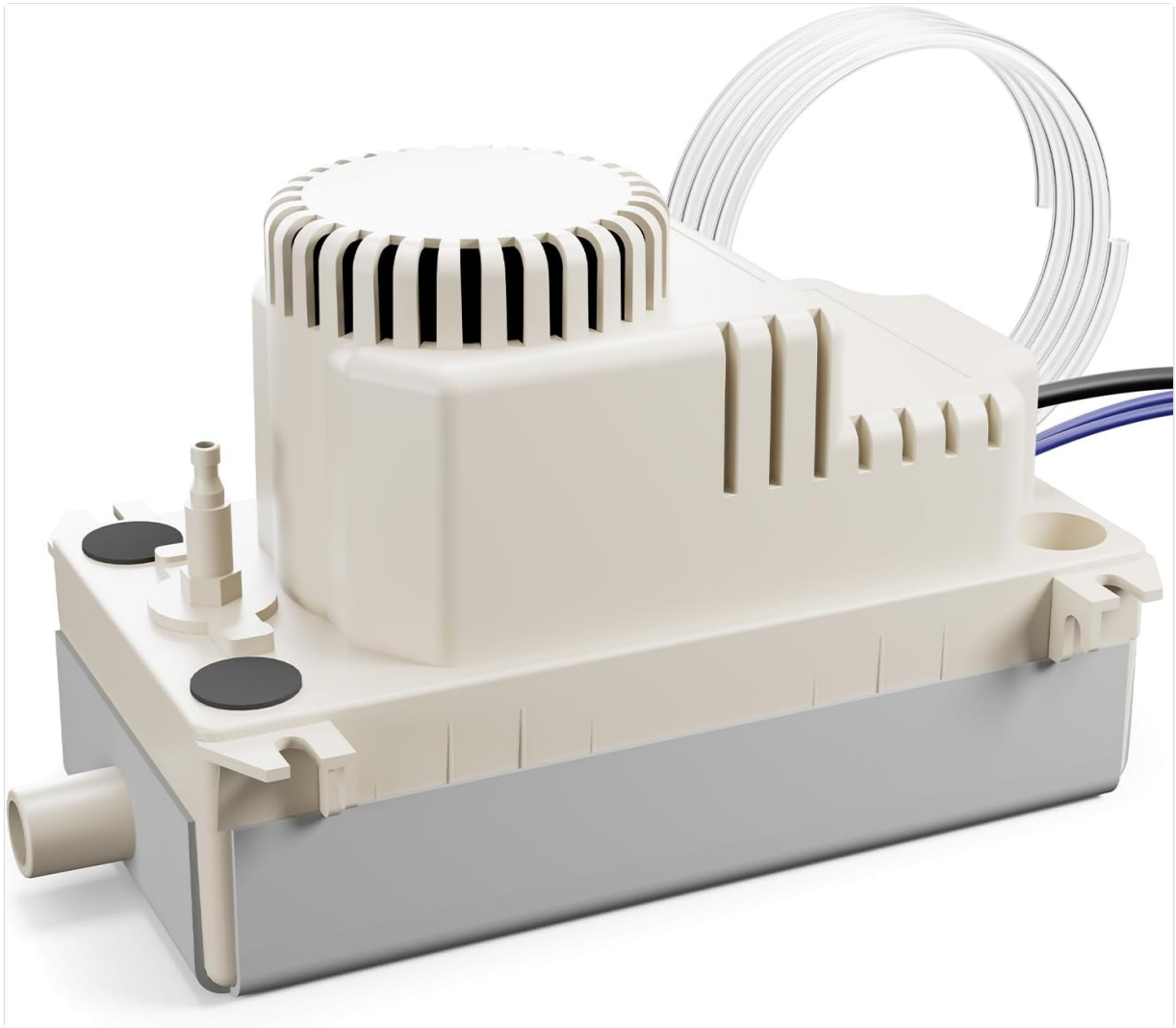


Figure 1: Main view of the ANDTE Automatic Condensate Pump.

AUTO & QUIET CONDENSATE PUMP

TANK CAPACITY
1/2 GALLON

MAX. HEAD
20FT

VOLTAGES
115V

MAX.FLOW
80 GPH

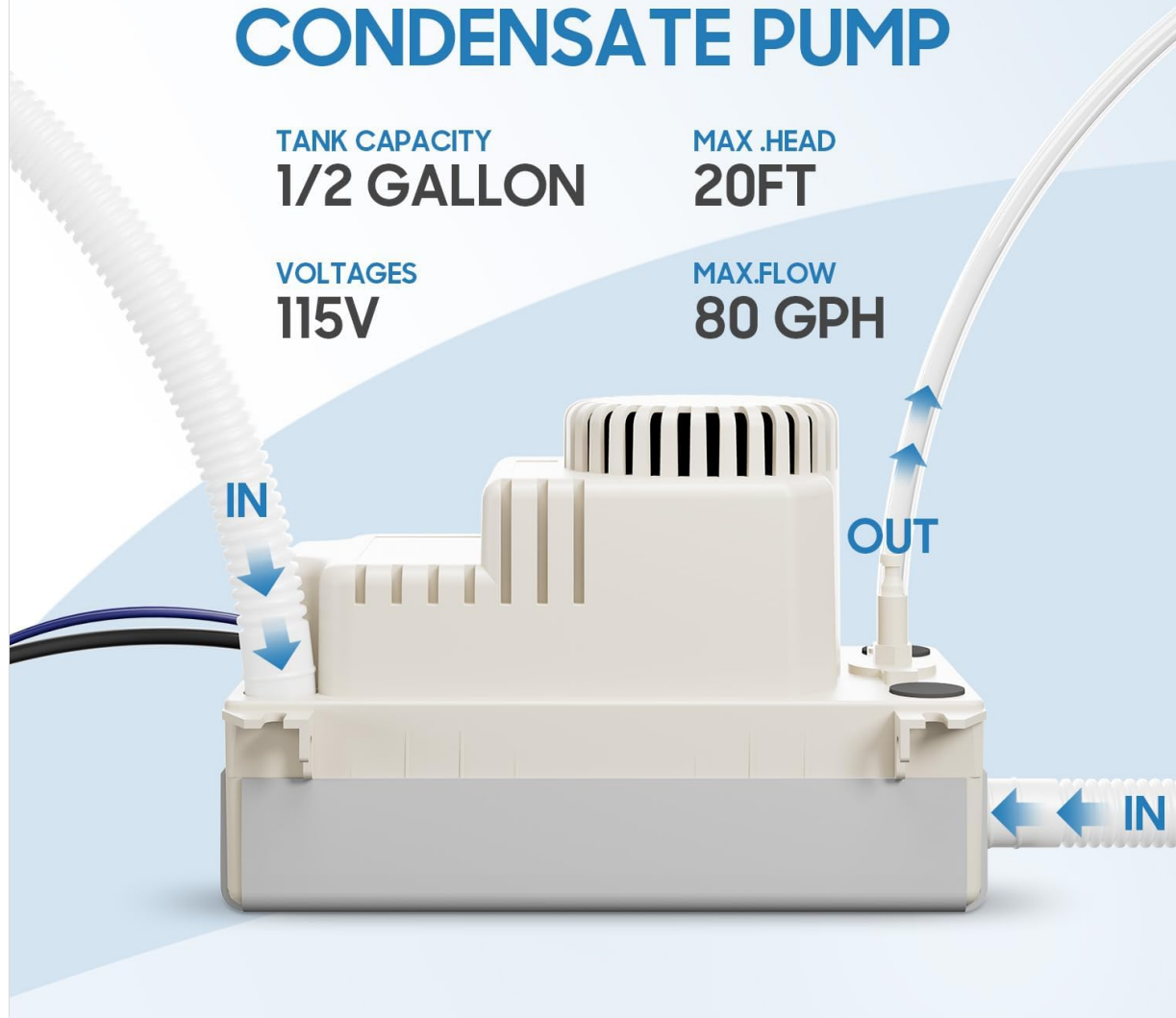


Figure 2: Diagram illustrating key specifications and water flow paths (IN/OUT) of the condensate pump.

4. SPECIFICATIONS

Below are the technical specifications for the ANDTE Automatic Condensate Pump, Model ZJ-KBS-4A:

Feature	Specification
Model Number	ZJ-KBS-4A
Rated Voltage AC	115V, 60Hz
Rated Power	40W (45W also indicated in image)
Horsepower	0.06 HP (1/16 HP)
Maximum Vertical Head	20 Feet
Maximum Flow Rate	80 Gallons Per Hour (GPH)
Tank Capacity	0.5 Gallon (approx.)

Feature	Specification
Level Switch	Built-in (Activates at 2.28 inches, shuts off at 1.26 inches)
Inlets	Five 1-inch (0.87-inch universal) water inlets (top/side optional)
Outlet	3/8-inch (4mm) universal water outlet (also 1/4 inch or 0.71 inch inlet outer)
Power Cord Length	3.3 feet (UL certified)
Dimensions (L x W x H)	9.45 x 5.3 x 5.7 inches (240 x 135 x 145mm)
Material	Robust Plastic
Item Weight	4.33 pounds

Rated Voltage AC: 115V,60Hz

Rated Power: 45W

The Maximum Life: 20Ft

Level Switch: Built-in

Dimensions: 240*135*145mm/9.45*5.3*5.7inch

Unique Design: Space-saving vertical centrifugal pump, equipped with a detachable 0.5-gallon storage tank for easy maintenance,

Featuring a corrosion-resistant heavy-duty plastic casing, four 0.87-inch universal inlets,

Outer diameter of outlet

1/4 inch OR 3/8 inch, and

one diameter 0.71-inch

Inlet outer.

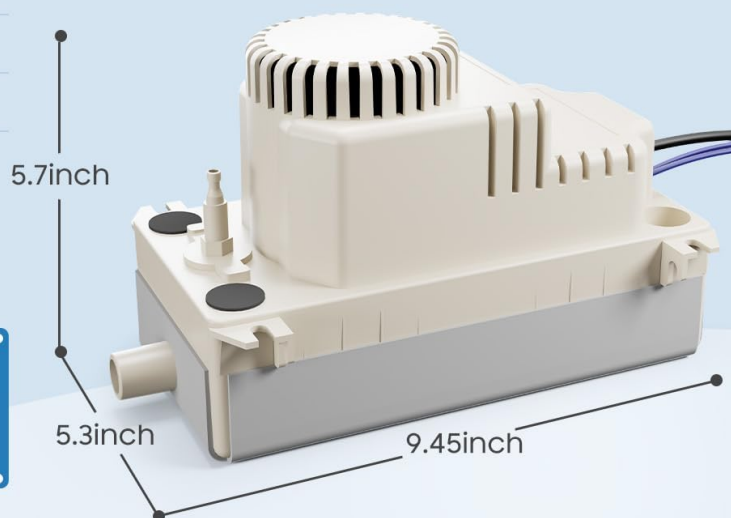


Figure 3: Detailed specifications and physical dimensions of the pump.

5. INSTALLATION AND SETUP

Follow these steps to properly install your condensate pump:

1. **Placement:** Position the pump on a stable, level surface near the condensate drain outlet of your

HVAC unit, air conditioner, or dehumidifier. Ensure it is below the drain outlet to allow gravity flow into the pump.

2. **Inlet Connection:** Connect the condensate drain line from your equipment to one of the 1-inch (0.87-inch universal) inlet ports on the pump. The pump offers multiple inlet options (top/side) for flexible installation. Secure the connection to prevent leaks.
3. **Outlet Connection:** Connect a 3/8-inch (4mm) discharge tube to the pump's outlet port. Route this tube upwards to the desired drainage location, ensuring it does not exceed the maximum vertical head of 20 feet. Avoid kinks or sharp bends in the tubing.
4. **Power Connection:** Plug the 3.3-foot UL power cord into a standard 115-volt, 60 Hz electrical outlet. Ensure the outlet is properly grounded.
5. **Test Operation:** Once all connections are secure, manually pour a small amount of water into the pump's reservoir to verify that the pump activates, discharges the water, and then shuts off automatically. Check for any leaks.



Figure 4: Example installation showing the condensate pump connected to a dehumidifier, with the discharge line routing water upwards.

6. OPERATING INSTRUCTIONS

The ANDTE Automatic Condensate Pump operates automatically based on the water level in its reservoir:

- When condensate water from your equipment flows into the pump's reservoir and reaches approximately 2.28 inches, the built-in float switch will activate the pump.
- The pump will then efficiently discharge the water through the connected outlet tube.
- Once the water level drops to approximately 1.26 inches, the float switch will automatically shut off the pump.
- This automatic cycle ensures continuous and reliable condensate removal without manual intervention.

7. MAINTENANCE

Regular maintenance is crucial for the longevity and efficient operation of your condensate pump. Perform the following maintenance tasks every 6 months:

- **Disconnect Power:** Always unplug the pump from the power outlet before beginning any maintenance.
- **Clean Liquid Storage Tank:** Carefully remove the pump cover and detach the liquid storage tank. Clean the inside of the tank to remove any sludge, mold, or debris that may have accumulated. Use mild soap and water, then rinse thoroughly.
- **Clean Float Ball:** Remove the float ball and clean it to ensure it moves freely without obstruction. Any buildup on the float can prevent proper activation or deactivation of the pump.
- **Clean Filter Tank:** If your model includes a separate filter tank, clean it as well to ensure unrestricted water flow.
- **Inspect Tubing:** Check the inlet and outlet tubing for any blockages, kinks, or signs of wear. Clear any obstructions.
- **Reassemble and Test:** Reassemble all components, ensuring they are securely in place. Plug the pump back in and perform a test run by pouring water into the reservoir to confirm proper operation.

8. TROUBLESHOOTING

If you encounter issues with your condensate pump, refer to the table below for common problems and solutions:

Problem	Possible Cause	Solution
Pump does not turn on	No power; Float switch stuck; Motor failure	Check power connection; Clean float switch and reservoir; Contact support if motor fails.
Pump runs continuously	Float switch stuck in 'on' position; Leak in discharge line; Backflow	Clean float switch; Check discharge line for leaks or blockages; Ensure proper check valve function.
Water overflows from pump	Discharge line blocked or kinked; Pump not operating; Insufficient head height	Clear discharge line; Refer to 'Pump does not turn on' solutions; Ensure discharge height is within 20 feet.
Pump is noisy	Debris in pump; Pump not level; Air in system	Clean pump reservoir; Ensure pump is on a stable, level surface; Bleed air from discharge line if applicable.

9. APPLICATIONS

The ANDTE Automatic Condensate Pump is suitable for a variety of applications requiring efficient condensate removal:

- Dehumidifiers
- Air Conditioners (including embedded and wall-mount portable AC units)
- Commercial Ice Makers
- Boilers



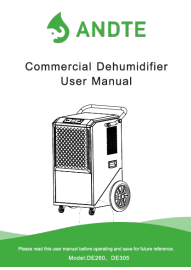

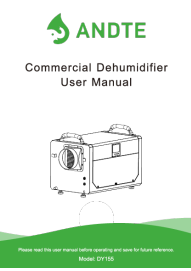

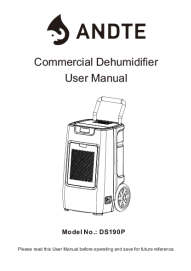
Figure 5: Multiple applications for the ANDTE Automatic Condensate Pump, including dehumidifiers, air conditioners, and ice makers.

10. WARRANTY AND SUPPORT

ANDTE is committed to providing reliable products and customer satisfaction. While specific warranty details for this pump are not explicitly stated, ANDTE generally offers comprehensive support for its products.

- **General Warranty Information:** ANDTE products typically come with a 5-year limited coverage, including 1-year full coverage.
- **Return Policy:** A 30-day money-back guarantee is often provided.
- **Customer Support:** ANDTE aims to provide timely responses to customer inquiries, often within 12 hours.

For specific warranty claims, technical assistance, or any questions regarding your ANDTE Automatic Condensate Pump, please refer to the contact information provided with your purchase or visit the official ANDTE website.

 <p>Commercial Dehumidifier User Manual</p> <p>Model: DE260, DE305</p>	<p>ANDTE Commercial Dehumidifier User Manual - Models DE260, DE305</p> <p>Comprehensive user manual for ANDTE commercial dehumidifiers, covering setup, operation, safety guidelines, maintenance, troubleshooting, and warranty information for models DE260 and DE305.</p>
 <p>ANDTE Model: PD80K</p> <p>Thank you for your order. You made our day.</p> <p>Thanks for your purchase. If you purchased with our dehumidifier, please feel free to contact us. Please refer to the label on the rear panel of the machine. Please read the label carefully and follow the instructions.</p> <p>Email: Support@andten.com https://andten.com</p>	<p>ANDTE PD10K/PD80K Portable Dehumidifier User Manual and Troubleshooting Guide</p> <p>Comprehensive guide for the ANDTE PD10K/PD80K portable dehumidifier, covering setup, operation, troubleshooting, and service information. Learn how to use your dehumidifier effectively and resolve common issues.</p>
 <p>Commercial Dehumidifier User Manual</p> <p>Model: DY155</p>	<p>ANDTE Commercial Dehumidifier DY155 User Manual</p> <p>User manual for the ANDTE Commercial Dehumidifier, Model DY155. This guide provides instructions on operation, safety precautions, maintenance, and troubleshooting for the ANDTE dehumidifier.</p>
 <p>Commercial Dehumidifier User Manual</p> <p>Model: DE260</p>	<p>ANDTE DE260 Commercial Dehumidifier User Manual</p> <p>User manual for the ANDTE DE260 commercial dehumidifier, providing instructions on operation, maintenance, troubleshooting, and safety precautions. Learn how to use and care for your dehumidifier for optimal performance and longevity.</p>
 <p>Commercial Dehumidifier User Manual</p> <p>Model No.: DS190P</p> <p>Please read this User Manual before operating and save for future reference.</p>	<p>ANDTE DS190P Commercial Dehumidifier User Manual</p> <p>User manual for the ANDTE DS190P commercial dehumidifier, covering safety information, operation instructions, maintenance, troubleshooting, and warranty. Learn how to operate and maintain your unit for optimal performance.</p>

The defaulter/di does not start

1. Check the defaulter/di's plug is inserted completely into the outlet.
2. If the plug and power cord are connected properly wait 15 minutes before reinserting. Once the machine needs wait 10 minutes to recover.
3. When the machine does not work, wait at least 3 minutes before reinserting to avoid damage to the compression.
4. Check the Fusion Link 2.0's indicator lights.
5. Defaulter/di was not reached its speed limit or the tank is full.
6. A plug is not in the proper position.
7. A auto-defect is in progress. The unit can't be started temporarily.
8. Defaulter/di is not working properly. Please directly matched the serviceability.

When receiving the package, the defaulter/di was placed immediately in a plastic bag. Please refer to it in the right position for more than a day before turning it on. If the startup is abnormal, please contact customer service.

1. Do not allow enough time to remove the moisture.
2. Make sure there are no curtains, blinds, or furniture blocking the front or back of the dehumidifier.
3. The humidity selector may not be set low enough.
4. Check that all doors, windows, and other openings are securely closed.
5. Room temperature is too low or too high, being either 41°F (5°C) above or 9°F (5°C) below.
6. There is a furnace heater or something giving off water vapor in the room.
7. Area to be dehumidified is too large. The capacity of your dehumidifier may not be adequate.
8. Place piece 1 or close to the moisture source as possible.

1. The swooshing sound of the flow of refrigerant is normal.
2. Noise will rise if the compressor has just started. After a few minutes, the sound will decrease.
3. The air filter or the air outlet is clogged. Clean filter or contact the seller to obtain a new filter.
4. The dehumidifier is tilted instead of the upright as it should be.
5. Unit is placed on uneven floor.

2. Please check the hose is installed correctly. Make sure it is connected tightly.
3. Please make sure you don't bend the hose. Also, the water outlet of the unit should be higher than the height of the water pipe placement position. Or it will cause the water flows back into the machine.
3. If you operate an expanded drain hose, please check the connection of the drain hose for any leakage.
4. Please ensure that the machine is placed horizontally on the ground. If you want to use the dehumidifier in the higher place, you can use the foam in the package to elevate it.
5. Would you please check the water tank is defective or not? If yes, please get in touch with the seller for a replacement.

3. Please make sure the water lock is installed correctly; if not, the full indicator will
3. Please check the Water full sensor is stuck or not.

1. The room temperature is too low, or the environment humidity is less than 35%.
2. Humidity level may be improperly set.
3. Auto-defrost is in progress. The unit can't be started temporarily.

2. Disconnect the power if an unpleasant smell comes with smoke and contact Customer Service for a solution.

2. Pieces be sure to place the hygrometer probe at the position of the sensor of the dehumidifier (the corner of the air inlet inside the filter space, so as to ensure the consistency of the detection position. If you do not know the location of the sensor, please contact Customer service at AndersService@outlook.com).

It's a normal situation. Humid air is pulled into the dehumidifier and passes over refrigerated cooling coils. Moisture from the air collects on these coils then drops into the drain tank. Your dehumidifier runs hot because it takes a lot of energy to keep the coils refrigerated and the fan operating.

If you have read the operation manual and still don't know how to set the humidity, please contact your email: AutoServices@outlook.com. We will send you an operation video.

All ANDTE products comes with warranty, please contact our professional customer service: AndteServices@outlook.com.

Our product has been checked carefully before packing and shipping, the product maybe damaged due to violent transportation.
If you received a defective product, please contact AndaService@outlook.com for a free replacement or a full refund.

If you have any questions, please contact the seller, your problems will be solved within 24 working hours. There are two methods to solve your issue effectively. Please contact Fawin's professional customer service: AndieServices@outlook.com

Frequently asked questions (FAQ) and troubleshooting tips for ANDTE dehumidifiers, covering common issues like starting problems, noise, leaks, and performance. Includes warranty and contact information.