

Bedsure BS-300B

Bedsure Electric Blanket User Manual

Model: BS-300B | Size: Full (72x84 inches) | Color: River Blue

IMPORTANT SAFETY INSTRUCTIONS

Please read and understand all safety instructions before using your Bedsure Electric Blanket. Failure to follow these instructions may result in electric shock, fire, or injury.

- Do not use with infants, incapacitated persons, or individuals sensitive to heat.
- Do not use if the blanket is wet.
- Keep pets away from the electric blanket to prevent damage to the heating elements.
- Do not dry clean this product. Follow the care instructions for cleaning.
- Do not use this blanket in conjunction with other heating devices, such as heating pads or other electric blankets.
- Regularly inspect the blanket and power cord for any signs of damage. If damaged, discontinue use immediately and contact customer support.
- Always disconnect the blanket from the power outlet when not in use or before cleaning.
- The blanket is equipped with an 8-hour auto shut-off feature to prevent overheating and ensure safety.

Even Heat No Cold Spots

Warmth that lasts, comfort in every degree.



Image: The Bedsure Electric Blanket has undergone 74 safety tests, surpassing UL standards, and is ETL and FCC certified, featuring overheat protection and an 8-hour auto shut-off for enhanced safety.

PRODUCT FEATURES

The Bedsure Electric Blanket is designed for optimal comfort and warmth with advanced features.

- **Customizable Warmth:** Offers 6 heating levels and 10 time settings for personalized comfort.
- **Advanced Heating Technology:** Utilizes advanced heating wire technology for precise temperature control and consistent warmth.
- **Soft & Durable Materials:** Constructed with a 220 GSM flannel top and 200 GSM premium sherpa for exceptional softness and enhanced durability.
- **Energy Efficient:** Operates at 130W, consuming significantly less energy than traditional heaters.
- **Automatic Shut-off:** Features a default 8-hour auto shut-off for safety and peace of mind.

Inside-Out Warmth

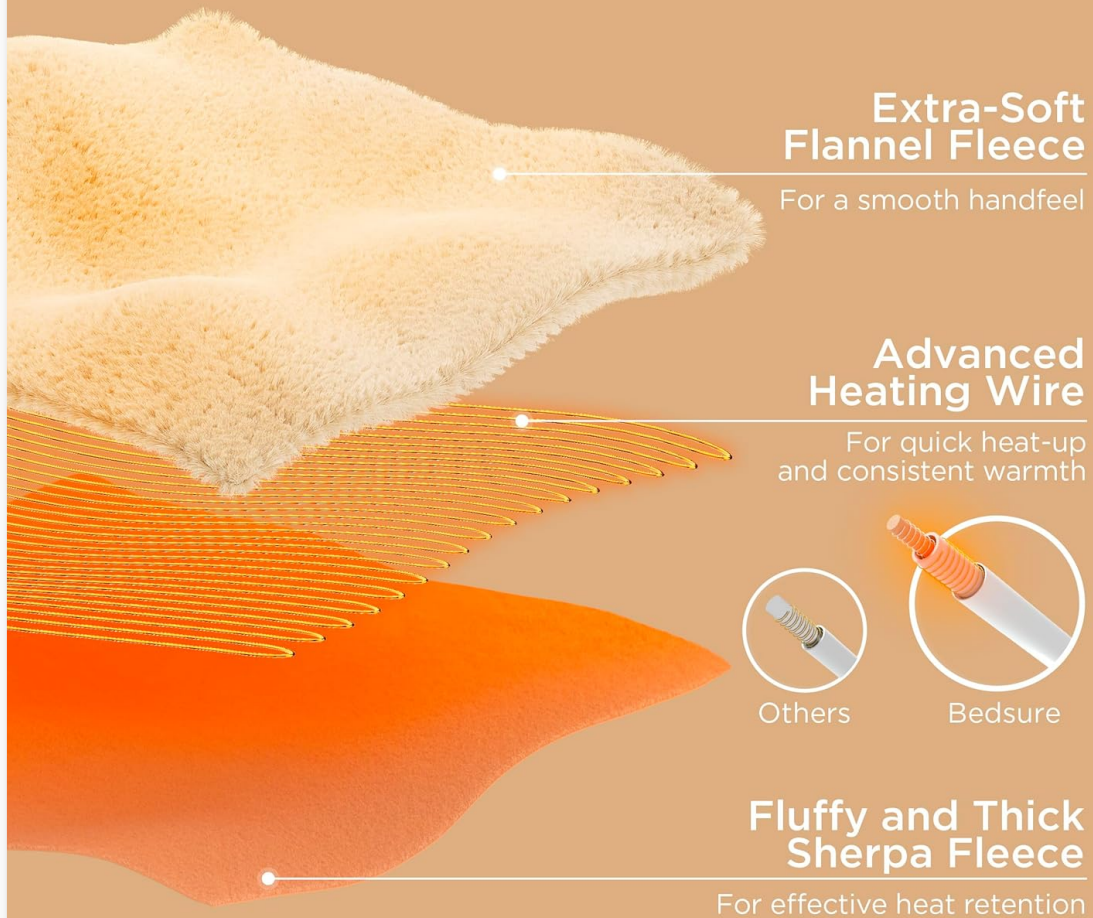


Image: This diagram illustrates the construction of the blanket, featuring an extra-soft flannel fleece layer, advanced heating wires for quick and consistent warmth, and a fluffy, thick sherpa fleece for effective heat retention.

Easy Remote Control for Personalized Comfort

10

10 Time-Settings

Selectable off with
1-hour intervals

6

6 Heating Levels

With 5°F interval



Image: This graphic demonstrates the superior heating performance of the Bedsure blanket, highlighting its enlarged heating area and a faster, more consistent temperature rise compared to other blankets.

SETUP GUIDE

Follow these steps to set up your electric blanket for first use.

1. **Unpack:** Carefully remove the electric blanket and controller from its packaging.
2. **Connect Controller:** Locate the connector on the blanket and firmly plug the controller cord into it. Ensure a secure connection.
3. **Placement:** Lay the electric blanket flat on your bed, ensuring it is not bunched or folded. The controller cord should be positioned conveniently for access.
4. **Power Connection:** Plug the controller's power cord into a standard 120V AC, 60Hz wall outlet.



Image: The Bedsure Electric Blanket in River Blue is shown fully spread on a bed, illustrating proper placement and the visible controller for easy access.

OPERATING INSTRUCTIONS

Learn how to use your electric blanket's controller to achieve your desired warmth and comfort.

1. **Power On/Off:** Press the power button on the controller to turn the blanket on or off. The display will illuminate when active.
2. **Adjust Heat Settings:** Use the '+' and '-' buttons to cycle through the 6 available heat levels. Start with a lower setting and adjust as needed.
3. **Set Timer:** Press the timer button to select from 10 time settings, typically in 1-hour intervals. The blanket will automatically shut off after the selected time.
4. **Auto Shut-off:** The blanket has a default 8-hour auto shut-off feature. If no timer is set, it will turn off automatically after 8 hours of continuous operation.

Safe & Reliable

74 Safety Tests with Standards Higher than UL

**Conducted in Bedsure Intertek-Recognized Satellite™ Lab*



Overheat
Protection



Auto
Shut-Off (8H)

Image: A detailed view of the easy-to-use remote control, showing the power button, '+' and '-' buttons for adjusting heat levels, and a timer button for setting auto shut-off intervals.

CARE AND MAINTENANCE

Proper care will extend the life of your Bedsure Electric Blanket.

- **Disconnect:** Always disconnect the controller from the blanket and unplug the power cord from the wall outlet before cleaning.
- **Machine Washable:** The blanket is machine washable. Use a gentle cycle with cold water.
- **Drying:** Tumble dry on a low heat setting or air dry. Ensure the blanket is completely dry before reconnecting the controller and using it.
- **Do Not:** Do not iron, bleach, or dry clean the electric blanket. These actions can damage the heating elements and fabric.

Gift your loved ones timeless elegance and luxurious warmth.



Image: A close-up view of the blanket's soft flannel fleece fabric, highlighting its texture and quality, which is designed to withstand machine washing.

TROUBLESHOOTING

If you encounter issues with your electric blanket, refer to the following common solutions.

- **Blanket Not Heating:**

- Ensure the power cord is securely plugged into a working wall outlet.
- Verify that the controller cord is firmly connected to the blanket.
- Press the power button on the controller to ensure it is turned on.

- **Controller Display Not Working:**

- Check the power connection as described above.
- If the issue persists, try unplugging and re-plugging the blanket after a few minutes.

- **Blanket Shuts Off Unexpectedly:**

- The auto shut-off timer may have been activated. Check the timer setting on the controller.
- Ensure the blanket is not bunched, folded, or covered by other heavy items, which could trigger

overheat protection.

If these steps do not resolve the issue, please contact Bedsure customer support for further assistance.

PRODUCT SPECIFICATIONS

Specification	Detail
Model Name	BS-300B
Size	Full (72"L x 84"W)
Material	100% Polyester (Flannel & Sherpa)
Power Rating	120V AC, 60Hz, 130W
Heat Settings	6 Levels
Time Settings	10 Settings (1-hour intervals)
Auto Shut-off	8 Hours (Default)
Included Components	1 Electric Blanket, 1 Controller
Certifications	ETL, FCC

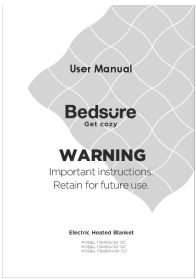
WARRANTY AND SUPPORT

Your Bedsure Electric Blanket comes with a limited warranty. For specific warranty details, please refer to the documentation included with your product or visit the official Bedsure website.

For any questions, technical support, or warranty claims, please contact Bedsure customer service. Contact information can typically be found on the product packaging or the Bedsure official website.

We recommend keeping your purchase receipt as proof of purchase for warranty purposes.

Related Documents



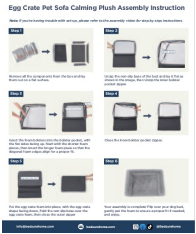
[Bedsure Electric Heated Blanket User Manual](#)

Comprehensive user manual for the Bedsure Electric Heated Blanket, providing detailed instructions for safe operation, cleaning, and storage. Includes safety warnings and product specifications.



[Bedsure Heated Mattress Pad User Manual - Safety, Operation, and Troubleshooting Guide](#)

Comprehensive user manual for the Bedsure Heated Mattress Pad (Models HMP-15080, HMP-140120, HMP-140160, HMP-165137). Includes safety instructions, product specifications, operating guide, and troubleshooting tips.



[Bedsure Egg Crate Pet Sofa Calming Plush Assembly Instructions](#)

A detailed, step-by-step guide for assembling the Bedsure Egg Crate Pet Sofa Calming Plush dog bed. Learn how to unpack components, insert foam bolsters, and complete the assembly for your pet's comfort.