

INFIYA Z1

INFIYA Z1 Solar Camera Outdoor Wireless - Instruction Manual

Model: Z1 | Brand: INFIYA

1. PRODUCT OVERVIEW

The INFIYA Z1 Solar Camera is a wireless outdoor security camera designed for home surveillance. It features a built-in 5200 mAh battery, solar charging capabilities, PIR motion detection, siren alarm, and 2K color night vision. It supports SD and optional cloud storage and is compatible with Alexa.



Image 1.1: INFIYA Z1 Solar Camera highlighting key features.

- **Longer Standby Time:** Built-in 5200 mAh battery with included solar panel for continuous power.
- **AI-Enhanced PIR Human Detection:** Reduces false alerts by detecting important events up to 32ft.
- **Dual Defense:** Light and siren alarm to deter intruders, with 2-way audio for communication.
- **2K FHD Live Feed:** Crystal-clear video resolution for detailed surveillance.
- **Color Night Vision:** White light enables color vision at night; infrared for black & white mode.
- **Truly Wireless:** IP65 weather resistance and 2.4GHz WiFi connectivity (5GHz not supported).
- **Flexible Storage:** Supports App Motion Alerts, Local TF Card Storage (up to 128GB, not included), and Optional Cloud Storage.

2. WHAT'S IN THE BOX



Image 2.1: Package contents for the INFIYA Z1 Solar Camera.

- Solar Camera (x2)
- Bracket (x2)
- Installation Guide
- Mounting Screws
- Mounting Template Stickers
- Type-C Power Cord (x2)
- Solar Panel (x2)

3. SETUP & INSTALLATION

Follow these steps to set up and install your INFIYA Z1 Solar Camera.

3.1 App Download & Account Creation

1. Scan the QR code on the product packaging or in the Installation Guide to download the Wansview Cloud app from Google Play or the App Store.
2. Open the app and create a new account or log in if you already have one.

3.2 Camera Connection

Ensure your phone is connected to a 2.4GHz Wi-Fi network. 5GHz Wi-Fi is not supported.

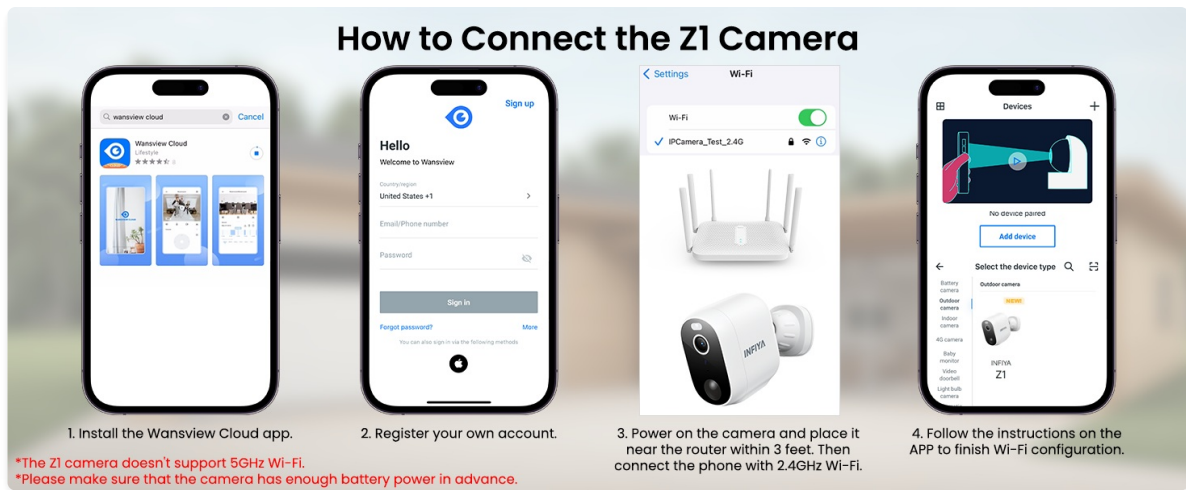


Image 3.1: Visual guide for connecting the Z1 camera to the Wansview Cloud app.

1. In the Wansview Cloud app, tap the '+' icon to add a new device.
2. Select the 'INFIYA Z1' camera model.
3. Choose 'Wi-Fi connection by QR code' or 'Wi-Fi connection by Soft-AP' as per the app's instructions.
4. Power on the camera. Ensure it has sufficient battery or charge it for about 30 minutes in advance.
5. If using QR code connection, scan the QR code displayed on your phone with the camera lens.
6. Follow any remaining in-app prompts to complete the connection.

3.3 Physical Installation

The camera and solar panel can be wall-mounted or ceiling-mounted. It is recommended to install the solar panel in an area with direct sunlight.

1. Use the provided mounting template stickers to mark drill holes on your desired installation surface.
2. Drill holes and insert expansion bolts.
3. Affix the camera bracket base and solar panel bracket using the provided screws.
4. Attach the camera to its bracket and connect the solar panel cable to the camera's Type-C port.

Your browser does not support the video tag.

Video 3.2: A detailed guide on how to physically install your INFIYA Z1 Camera and Solar Panel.

Your browser does not support the video tag.

Video 3.3: Step-by-step instructions on connecting the INFIYA Z1 camera to the app.

Your browser does not support the video tag.

Video 3.4: Guide on using the Soft-AP method to connect your INFIYA Z1 camera.

4. OPERATING YOUR CAMERA

The Wansview Cloud app provides full control over your INFIYA Z1 camera's features.

4.1 Live View & Two-Way Audio

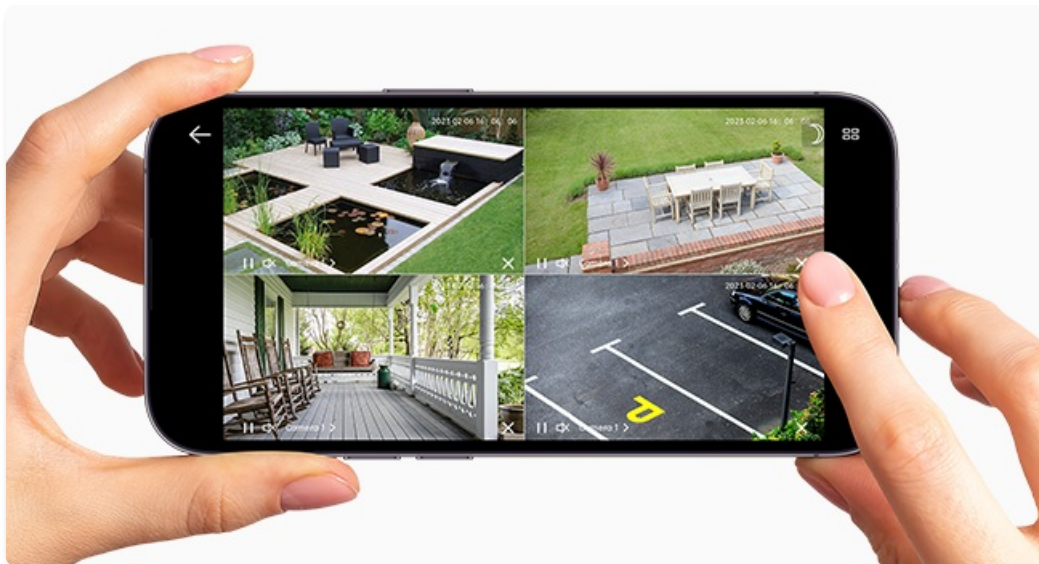


Image 4.1: Multiple camera views within the Wansview Cloud app.

- Access live 2K FHD video streams from your camera(s) via the app.
- Use the microphone icon to enable two-way audio, allowing you to speak through the camera.
- Switch between 2K and standard definition video quality as needed.
- Record video directly to your smartphone or capture still images.

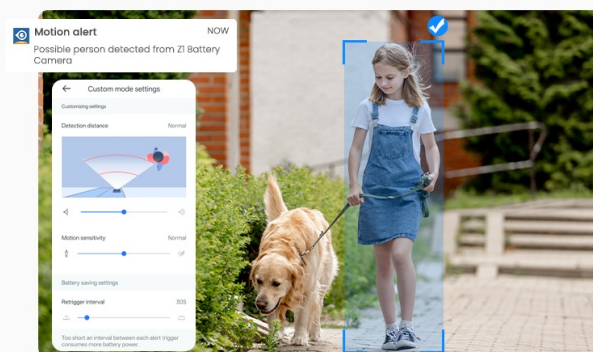
4.2 Motion Detection & Alerts

Focus on What Really Matters

Reduce false alerts with AI-enhanced PIR human detection function. Instant notifications pushed through the camera APP to notify you of what's happening.

Set the camera to run on custom mode and adjust the detailed settings at your needs for better detection performance.

***Suggested installation height and angle:** about 3m (9.84ft), 45°angle facing the desired monitoring range



*For AI pet/package/vehicle detection, cloud subscription is needed.
*The motion detection feature can detect movement up to 10 meters (32ft) away.

Image 4.2: Customizing motion detection settings and receiving alerts.

- Configure motion detection settings (Power-save, Standard, Performance, Custom modes) to balance battery life and detection sensitivity.
- Enable motion alerts to receive real-time notifications on your smartphone when activity is detected.
- Customize detection types (e.g., human, pet, vehicle) and notification preferences.

4.3 Night Vision & Lighting

Not Fading with the Sun

Color images remained even at night with the built-in white light. Bright or monochrome, all at your preference.

Night

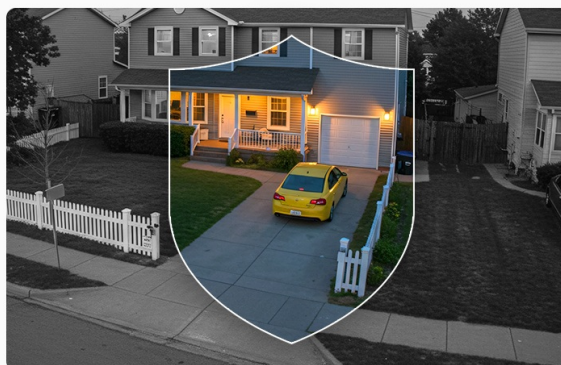


Image 4.3: The camera offers both infrared and full-color night vision options.

- Choose between Auto Infrared mode (black & white), Intelligent Light mode (color night vision with white lights on motion), or Full Color Night mode (always color with ambient light).
- Manually turn on/off the camera's integrated light for enhanced visibility or deterrence.

4.4 Siren Alarm

Scare Off Potential Intruders

Intelligent white light can automatically turn on when movement is detected at night. Deter uninvited guests with siren triggered by motion.



Siren




*This camera does **NOT** feature PTZ functionality and does **NOT** support tracking moving objects.

Image 4.4: The camera's siren can be manually activated or triggered by motion.

- Manually activate the siren from the app to deter unwanted visitors.
- Set the siren to be triggered automatically by motion detection for an immediate response.

5. STORAGE OPTIONS

3 Recording Modes at Your Preferences







Storage Mode	 App Motion Alert	 Local TF Card Storage	 Optional Cloud Storage
 Cost	No charge	No charge (TF card not included)	Paid (monthly/quarterly/ yearly subscription in App)
Storage Feature	Real-time alert previews (no permanent save)	Longer motion recordings (loop overwrite)	Off-site backup, multi-device access, human /pet/vehicle/ package AI recognition

Image 5.1: Overview of the three available storage modes.

- **App Motion Alerts:** Receive real-time snapshots/clips (no permanent save) at no cost.
- **Local TF Card Storage:** Supports up to 128GB (FAT32 format only) for loop recording. TF card not included.
- **Optional Cloud Storage:** Subscription required for secure off-site backup, multi-device access, and advanced AI recognition features (human, pet, vehicle, package).

6. DEVICE SHARING



Image 6.1: Share camera access with family members or other users.

You can share access to your camera with other users (family, friends) through the Wansview Cloud app. Navigate to 'Settings' > 'Device Sharing' and invite new members. You can select specific permissions for shared users, such as live view, motion alerts, cloud storage replay, two-way audio, light control, and siren control.

7. SPECIFICATIONS

Indoor/Outdoor Usage	Indoor, Outdoor
Compatible Devices	Alexa Assistant
Power Source	Battery Powered, Solar Powered
Connectivity Protocol	Wi-Fi (2.4GHz only)
Controller Type	Android, iOS
Mounting Type	Wall Mount, Ceiling Mount
Video Capture Resolution	1296p (2K)
Color	White
International Protection Rating	IP65
Battery Power	5200 Milliamp Hours
Night Vision Range	26 Feet
Viewing Angle	98.9 Degrees

8. MAINTENANCE

To ensure optimal performance and longevity of your INFIYA Z1 Solar Camera, follow these maintenance guidelines:

- **Regular Cleaning:** Periodically clean the camera lens and solar panel surface with a soft, damp cloth to remove dust, dirt, or debris that may obstruct vision or reduce charging efficiency.
- **Battery Monitoring:** While solar-powered, monitor the battery level in the app, especially during prolonged periods of low sunlight or heavy usage.
- **Firmware Updates:** Check the Wansview Cloud app regularly for firmware updates to ensure your camera has the latest features and security enhancements.
- **Weather Protection:** Although IP65 rated, ensure the camera is installed securely to withstand strong winds or heavy precipitation. Avoid direct high-pressure water jets.

9. TROUBLESHOOTING

If you encounter issues with your INFIYA Z1 Solar Camera, refer to these common troubleshooting tips:

- **Connection Issues:** Ensure your Wi-Fi network is 2.4GHz. Verify the Wi-Fi signal strength at the camera's location using the app. Try resetting the camera by holding the reset button for 5 seconds until the red and blue LEDs flash alternately.
- **Battery Not Charging:** Confirm the solar panel is receiving direct sunlight. Check the connection cable between the solar panel and the camera. Ensure the solar panel surface is clean.

- **False Motion Alerts:** Adjust the motion detection sensitivity settings in the app. Utilize custom detection zones to exclude areas with frequent irrelevant movement (e.g., swaying trees).
- **Poor Night Vision:** Ensure the camera lens is clean. Check night vision settings in the app (Auto Infrared, Intelligent Light, Full Color Night) to match your preference and ambient light conditions.
- **Two-Way Audio Problems:** Verify microphone and speaker settings in the app. Ensure there are no obstructions blocking the camera's microphone or speaker.

10. WARRANTY & SUPPORT

For warranty information, technical support, or further assistance, please refer to the official INFIYA website or contact their customer service directly. The Wansview Cloud app also provides a 'Support Center' and 'Diagnose' section for in-app assistance.