

Manuals+

[Q & A](#) | [Deep Search](#) | [Upload](#)

Manuals.plus /

› [NBYSGO](#) /

› NBYSGO Makeup Vanity with Lighted Mirror and Power Strip User Manual

NBYSGO YK004-WH

NBYSGO Makeup Vanity with Lighted Mirror and Power Strip

Model: YK004-WH
User Instruction Manual

PRODUCT OVERVIEW

The NBYSGO Makeup Vanity is designed to enhance your beauty routine with its integrated features and elegant design. This vanity includes a high-quality mirror with adjustable LED lighting, a convenient power strip, and ample storage solutions. It is constructed from durable materials to ensure stability and longevity.

Key features include:

- Adjustable LED light strip with three color modes (warm, natural, cool) and brightness control.
- Integrated power strip with 2 USB ports and 2 AC outlets for device charging.
- Dedicated hairdryer holder for convenience.
- Multiple storage options including two large drawers, two three-tier shelves, and a cabinet.
- Crafted from premium particle board for stability.



Figure 1: Fully assembled NBYSGO Makeup Vanity with its integrated mirror, lighting, and storage.

SETUP AND ASSEMBLY

Assembly of the NBYSGO Makeup Vanity is required. All components are clearly numbered, and a detailed, step-by-step instruction manual is included in the packaging. Please follow the provided guide carefully for a smooth assembly process.

1. Unpack all components and verify against the parts list in the assembly manual.
2. Identify each part by its corresponding number.
3. Follow the sequential steps in the assembly manual to connect the frame, drawers, shelves, and mirror.
4. Ensure all screws and fasteners are securely tightened before use.



Figure 2: Key components of the vanity, illustrating the elegant metal knob, sturdy frame, cabinet, drawers, and soft cushion.



Figure 3: Dimensional diagram of the vanity, providing measurements for assembly and placement.

OPERATING INSTRUCTIONS

LED Light Operation

The vanity mirror is equipped with an adjustable LED light strip offering three distinct lighting modes and adjustable brightness.

- **Power On/Off:** Locate the touch sensor or button on the mirror frame to turn the lights on or off.
- **Change Color Mode:** Tap the touch sensor or button repeatedly to cycle through the three color modes: *Warm Light*, *Natural Light*, and *Cool Light*.
- **Adjust Brightness:** Press and hold the touch sensor or button to dim or brighten the lights. Release when the desired brightness level is achieved.

Make-up Mirror with 3 Color LED Lights



Warm Lights



Natural Lights



Cold Lights

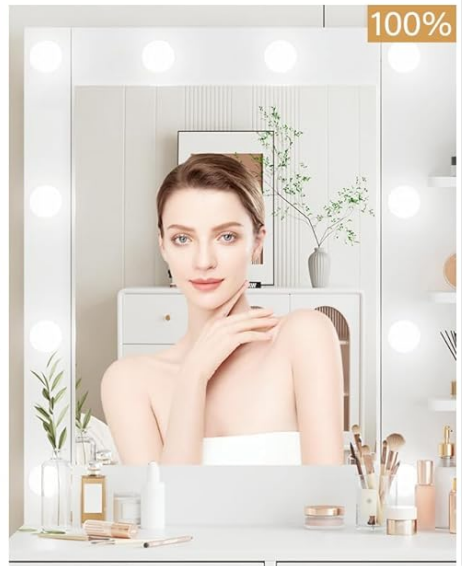


Figure 4: Illustration of the three adjustable LED light modes: Warm, Natural, and Cold, with varying brightness levels.

Power Strip Usage

The vanity includes a built-in power strip for convenient charging of electronic devices.

- **USB Ports:** Use the 2 USB ports to charge smartphones, tablets, or other USB-powered devices.
- **AC Outlets:** The 2 standard AC outlets can be used for hair dryers, curling irons, or other small appliances.

Hairdryer Holder

A dedicated holder for your hairdryer is located on the right side of the vanity for easy access and organization.



Figure 5: The vanity's integrated power strip and convenient hairdryer holder.



LARGE STORAGE SPACE FOR ALL YOUR MAKE-UP NEEDS

Figure 6: The vanity offers extensive storage space for various makeup and beauty essentials.

MAINTENANCE

Regular maintenance will help preserve the appearance and functionality of your vanity.

- **Cleaning Surfaces:** Wipe down all surfaces with a soft, damp cloth. Avoid abrasive cleaners or harsh chemicals that may damage the finish.
- **Mirror Cleaning:** Use a glass cleaner specifically designed for mirrors and a lint-free cloth to prevent streaks.
- **Dusting:** Regularly dust the vanity and its components to prevent buildup.
- **Tightening Fasteners:** Periodically check and tighten any loose screws or fasteners to maintain structural integrity.

TROUBLESHOOTING

If you encounter issues with your NBYSGO Makeup Vanity, refer to the following common troubleshooting steps:

Problem	Possible Cause	Solution
LED lights do not turn on or flicker.	Loose power connection, faulty power outlet, or issue with the light strip.	Ensure the power cord is securely plugged into a working outlet. Check if the touch sensor is clean and responsive. If the issue persists, contact customer support.
Lights turn off by themselves.	Intermittent power supply or sensor malfunction.	Try plugging the vanity into a different power outlet. Ensure no objects are obstructing the touch sensor. If the problem continues, contact customer support.
Drawers are difficult to open/close.	Improper assembly or obstruction.	Verify that the drawer slides are correctly installed and aligned according to the assembly manual. Check for any items obstructing the drawer's path.
Vanity feels wobbly.	Loose fasteners or uneven floor.	Check and tighten all screws and bolts. Ensure the vanity is placed on a flat, level surface.

SPECIFICATIONS

Attribute	Detail
Brand	NBYSGO
Model Number	YK004-WH
Color	004 White
Size	4 Drawers
Product Dimensions	15.7"D x 42.5"W x 55.9"H (15.7 x 42.5 x 55.9 inches)
Item Weight	77.8 pounds
Frame Material	Wood (Particle Board)
Furniture Finish	Vanity Desk with Mirror
LED Light Modes	Warm, Natural, Cool
Power Outlets	2 USB ports, 2 AC outlets

CUSTOMER SUPPORT

For any questions, concerns, or assistance with assembly or operation, please do not hesitate to contact NBYSGO customer support. We are committed to ensuring your satisfaction and will provide a prompt solution.

Please refer to your purchase documentation or the NBYSGO official website for specific contact information.