



Manuals.plus /

› HITTIONA /

› HITTIONA Rotating Curling Iron MS-C210 User Manual

HITTIONA MS-C210

HITTIONA Rotating Curling Iron MS-C210 User Manual

Model: MS-C210

IMPORTANT SAFETY INFORMATION

Please read all safety warnings before use to prevent injury or damage.

- **Burn hazard:** Surfaces get extremely hot during use. Avoid contact with skin.
- **Electric shock risk:** Keep away from water. Do not use near bathtubs, sinks, or other water sources.
- **Fire risk:** Unplug when not in use. Do not leave unattended when plugged in.
- Keep out of reach of children.

PRODUCT OVERVIEW

The HITTIONA Rotating Curling Iron MS-C210 is designed for effortless hair styling, featuring automatic rotation, adjustable temperature settings, and dual voltage for travel convenience. It aims to provide long-lasting curls and waves for various hair types.



Image: The HITTIONA Rotating Curling Iron MS-C210, Rose Gold color.

Key Features

- **360° Auto-Rotate:** Effortlessly curls hair without manual twisting.
- **Two Rotating Speeds:** Slow for beginners (R1) and normal for experienced users (R2).
- **1-Inch Ceramic Barrel:** Designed to create classic waves and curls.
- **Fast Heat-Up:** Reaches desired temperature in approximately 30 seconds.
- **20 Heat Settings:** Adjustable temperature from 250°F to 450°F for all hair types.
- **LCD Display:** Clearly shows temperature and rotation speed.
- **Dual Voltage (110-240V AC):** Suitable for international travel.
- **Auto Shut-Off:** Automatically turns off after one hour of inactivity for safety.
- **Cool Tip and Safety Stand:** Enhances user safety during operation.
- **Reset 'Home' Button:** Simplifies hair release from the clamp.

Time-Saving + Effortless

360° Auto-Rotate

2 Rotating Speed

6" Long Barrel

Great for styling Long Hair

2.3" Clamp

Just-right clip length for a firm hold

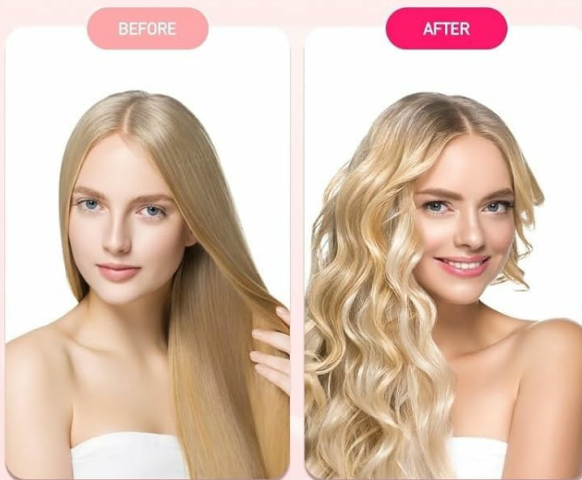


Image: Overview of the curling iron's time-saving and effortless features, including 360° auto-rotate, two rotating speeds, 6-inch long barrel, and 2.3-inch clamp.

1" barrel diameter Creates Long-Lasting Classic Waves Curls



30s Heat-Up



Ceramic Coating
tames frizz and
adds **shine**



Dual Voltage
for Travel



Auto off after
1H



Image: Details on the 1-inch barrel for classic waves, 30-second heat-up, ceramic coating for shine, dual voltage for travel, and 1-hour auto-off safety feature.

SETUP

Unboxing

Carefully remove the curling iron and all accessories from its packaging. Ensure all components are present and undamaged.

Your browser does not support the video tag.

Video: Unboxing and initial handling of the HITTIONA 1 Inch Rotating Curling Iron.

Initial Preparation

- Ensure your hair is clean, dry, and detangled before use.
- Apply a heat protectant spray to your hair to minimize heat damage.
- Section your hair into manageable parts using clips.
- Plug the curling iron into a suitable electrical outlet.

Your browser does not support the video tag.

Video: Demonstration of hair preparation and initial curling steps.

OPERATING INSTRUCTIONS

Power On and Temperature Setting

1. Long press the power button to turn on the curling iron.
2. Use the '+' and '-' buttons to select your desired temperature. The LCD screen will display the temperature.
3. Allow the iron to heat up for approximately 30 seconds until the temperature stabilizes.



Image: Guide to 20 adjustable temperature settings (250°F-450°F) for different hair types, displayed on the LCD screen.

Curling Hair

4. Take a small, manageable strand of hair and place it between the clamp and the barrel.
5. Press and hold the 'Left' or 'Right' arrow button to activate the auto-rotation. The barrel will automatically wrap the hair around itself.
6. Hold for 5-10 seconds, depending on your hair type and desired curl intensity.



Image: Step-by-step visual guide on how to use the rotating curling iron, from powering on to releasing the curl.

Your browser does not support the video tag.

Video: Detailed demonstration of using the 1-inch automatic curling iron for long-lasting curls and waves.

Adjusting Rotation Speed

- Press the 'M' button to adjust the rotation speed.
- Choose 'R1' for slow rotation, ideal for beginners or tighter curls.
- Choose 'R2' for normal rotation, suitable for experienced users or looser waves.

2 Auto Rotating Speed



Image: Illustration of the two auto-rotating speeds (R1 for slow, R2 for normal) and their recommended uses.

Releasing Hair

6. Press the 'Home' button to release the clamp and gently slide the curling iron out of your hair.
7. Allow the curl to cool completely before touching or styling to ensure it sets properly.



One-Click Clip Reset +

Arrow Rotation



Left/Right Rotation

Create nice symmetry on
both sides of your hair



Home Button

No hassle of searching for
clips while curling

Image: Close-up of the curling iron highlighting the 'Home' button for one-click clip reset and left/right rotation arrows.

Your browser does not support the video tag.

Video: Demonstration of the rotating curling iron in action, showing how to achieve curls.

MAINTENANCE

- Always unplug the curling iron and allow it to cool completely before cleaning.
- Wipe the barrel and handle with a soft, damp cloth. Do not use abrasive cleaners or harsh chemicals.
- Ensure the curling iron is completely dry before storing.
- Store the appliance in a cool, dry place, away from moisture and direct sunlight.
- Use the provided portable package for convenient storage and travel.

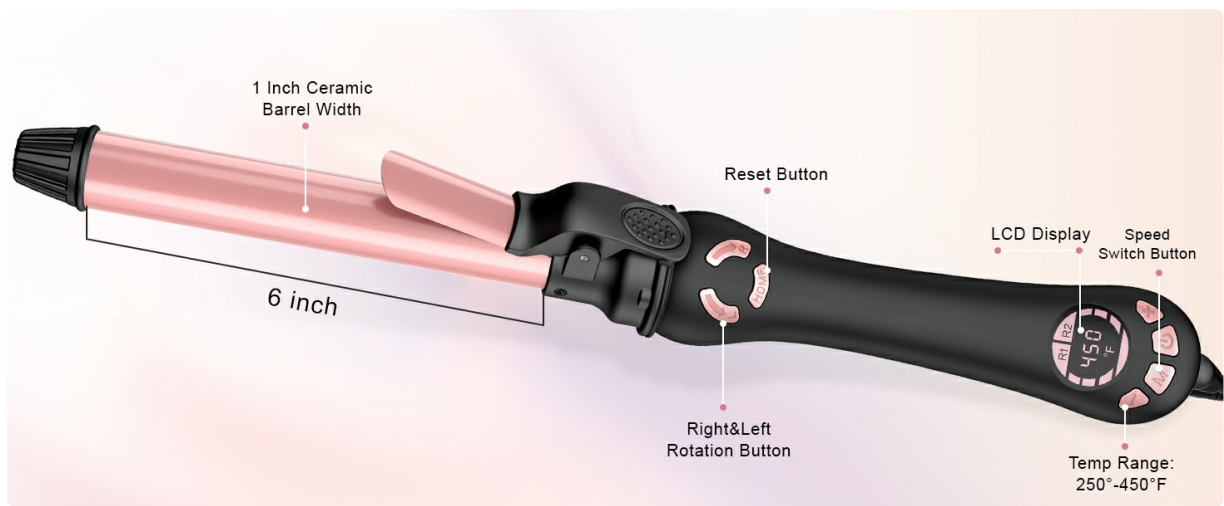


Image: The curling iron's dual voltage feature, 1-hour auto-off, and included accessories like an anti-heat glove and two clips.

TROUBLESHOOTING

- **Appliance not heating:** Ensure the curling iron is properly plugged into a working outlet and the power button has been pressed.
- **Rotation issues:** If the automatic rotation is not working, check for any hair tangles around the barrel or ensure the rotation buttons are pressed correctly.
- **Hair snagging:** Ensure hair strands are smooth and detangled before clamping. Do not use excessive hair in one section.
- **Burnt smell:** This may occur if hair is left on the barrel for too long or if the temperature is too high for your hair type. Adjust temperature and holding time accordingly.

SPECIFICATIONS

Feature	Detail
Model Name	MS-C210
Brand	HITTIONA
Product Dimensions	15.7 x 0.98 x 0.98 inches
Item Weight	1 Pound
Barrel Size	1 Inch
Max Temperature Setting	450 Degrees Fahrenheit
Temperature Range	250°F to 450°F (20 settings)
Voltage	Dual Voltage (110-240V AC)
Material Type	Acrylonitrile Butadiene Styrene (ABS)
Heater Surface Material	Acrylonitrile Butadiene Styrene (ABS)
Power Source	Corded Electric
Hair Type Compatibility	All Hair Types
Auto Shut-Off	Yes, after 1 hour

WARRANTY AND SUPPORT

For warranty information or product support, please refer to the documentation included with your purchase or contact HITTIONA customer service directly. Keep your purchase receipt for warranty claims.