



[Manuals.plus](#) /

› [Greenworks](#) /

› Greenworks 30-inch Riding Mower Bagging Kit Instruction Manual

Greenworks 30BAG1B

Greenworks 30-inch Riding Mower Bagging Kit Instruction Manual

Model: 30BAG1B

INTRODUCTION

This manual provides essential instructions for the safe and efficient use of your Greenworks 30-inch Riding Mower Bagging Kit. Designed for seamless compatibility with Greenworks 30-inch riding mowers, this kit facilitates grass collection, contributing to a tidy lawn after each mow. The heavy-duty, weather-resistant construction ensures durability. This bagging kit captures clippings and debris, reducing post-mow clean-up time and promoting a healthier lawn by preventing thatch buildup.

SAFETY INFORMATION

Always prioritize safety when operating lawn care equipment. Read and understand all instructions in this manual and your riding mower's manual before installation or operation. Failure to follow safety instructions can result in serious injury.

- Wear appropriate personal protective equipment (PPE), including eye protection, hearing protection, and sturdy footwear.
- Ensure the mower engine is off and the spark plug wire is disconnected (for gas models) or the battery is removed (for electric models) before performing any installation, maintenance, or cleaning.
- Keep hands, feet, and clothing away from moving parts.
- Do not operate the bagging kit if any parts are damaged or missing.
- Keep children and pets away from the operating area.

PACKAGE CONTENTS

Carefully unpack all items and ensure you have received the following components:

- Bagger assembly (includes collection bags and frame)
- Mounting hardware (bolts, nuts, washers)

- Discharge chute adapter
- Instruction Manual

Note: A specific blade designed for bagging may be required for optimal performance and is often sold separately. Please consult your mower's manual or Greenworks support for blade compatibility.

SETUP AND ASSEMBLY

This bagging kit is designed for Greenworks 30-inch CrossoverT mowers. Ensure your mower is turned off, the key is removed, and the parking brake is engaged before beginning assembly.

Step 1: Prepare the Mower

Locate the rear discharge opening on your Greenworks 30-inch riding mower. Remove any existing mulching plug or deflector.

Step 2: Attach the Discharge Chute Adapter

Align the discharge chute adapter with the mower's rear discharge opening. Secure it using the provided hardware. Ensure a tight fit to prevent grass clippings from escaping.

EASY INSTALLING AND EMPTYING

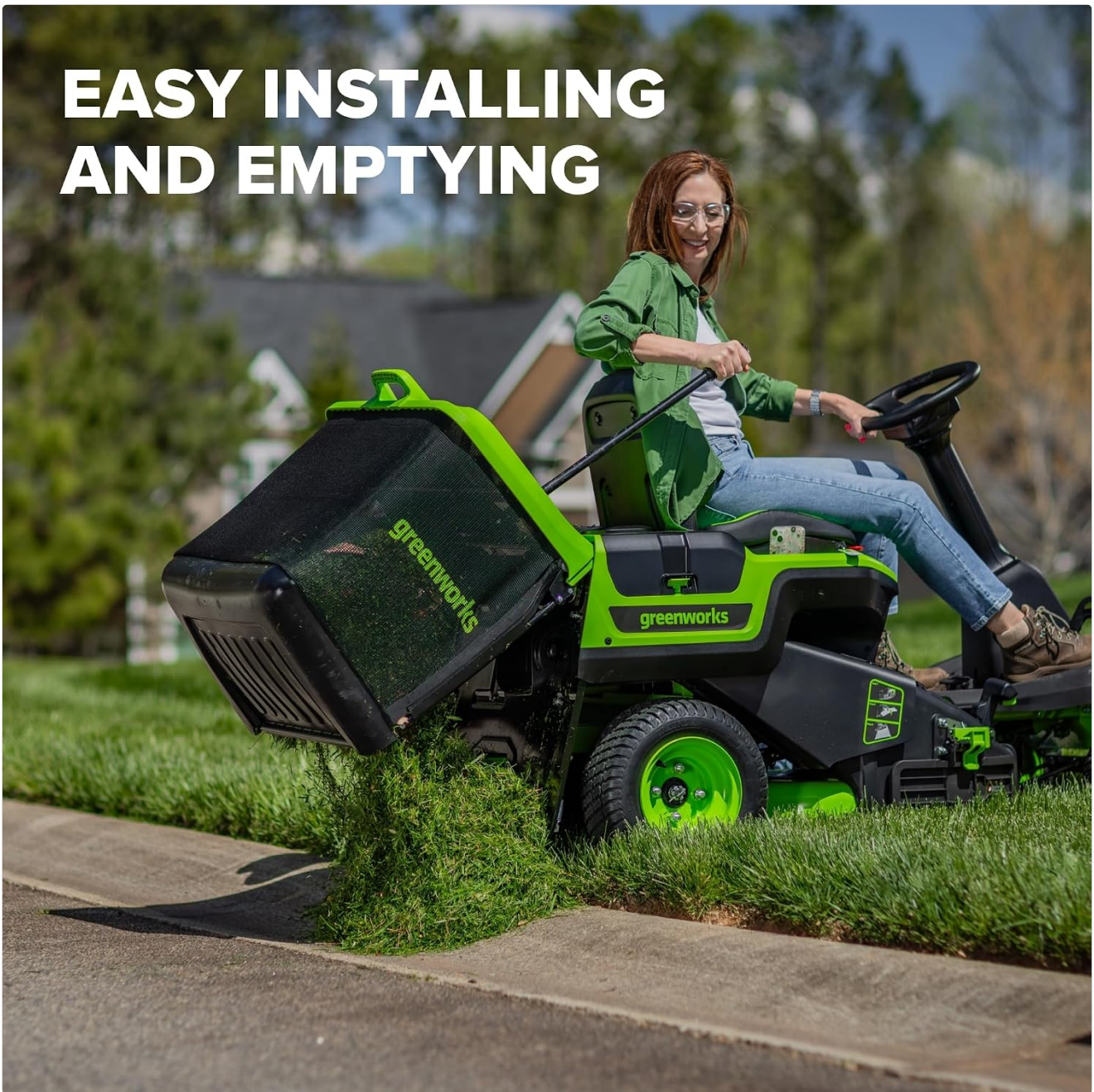


Image: A person is shown attaching the bagging kit to the rear of a Greenworks riding mower, demonstrating the initial installation process.

Step 3: Assemble the Bagger Frame and Bags

Follow the diagrams in the included assembly guide to connect the bagger frame components. Once the frame is assembled, slide the collection bags onto the frame, ensuring they are securely attached and positioned to collect clippings effectively.



Image: A person is shown securing the Greenworks bagging kit to the riding mower, highlighting the connection point for the grass collection system.

Step 4: Mount the Bagger Assembly

Lift the assembled bagger onto the mounting points on the mower. Secure it firmly using the remaining hardware. Double-check all connections to ensure the bagger is stable and will not detach during operation.

OPERATING INSTRUCTIONS

Once the bagging kit is securely installed, you can begin mowing and collecting grass clippings.

Mowing with the Bagger

1. Start your Greenworks 30-inch riding mower according to its operating manual.
2. Engage the mower blades. Ensure the small metal cover with a screw on the back of the mower is correctly positioned or flipped as required for blade engagement with the bagger. Refer to your mower's manual for specific instructions on this mechanism.
3. Begin mowing at a moderate speed. Overly fast speeds or cutting excessively tall grass can lead to clogging.

4. Monitor the collection bags. When they appear full, it's time to empty them.

Emptying the Collection Bags

For efficient operation, empty the bags regularly.

1. Stop the mower engine and remove the key. Engage the parking brake.
2. Carefully lift the bagger lid or release the bags from their frame.
3. Empty the grass clippings into a compost pile or designated disposal area.
4. Reattach the bags and secure the lid before resuming operation.



Image: A person is shown effortlessly emptying the grass collection bin of the Greenworks bagging kit, demonstrating its user-friendly design.

MAINTENANCE

Regular maintenance ensures the longevity and optimal performance of your bagging kit.

- **Cleaning:** After each use, clean the inside of the discharge chute adapter and the collection bags to prevent buildup and clogging. Use a brush or cloth to remove grass and debris. Do not use high-pressure water directly on fabric bags.
- **Inspection:** Periodically inspect the bagger frame, bags, and all hardware for wear, damage, or loose connections. Tighten any loose bolts and replace damaged parts immediately.

- **Storage:** Store the bagging kit in a clean, dry area, away from direct sunlight and extreme temperatures. Ensure bags are completely dry before storage to prevent mold or mildew.

TROUBLESHOOTING

Refer to this section for common issues and their solutions.

Problem	Possible Cause	Solution
Bagger does not fit or is difficult to install.	Incorrect model compatibility; improper alignment; missing hardware.	Ensure the bagging kit is specifically for Greenworks 30-inch CrossoverT mowers (Model 30BAG1B). Verify all mounting points are correctly aligned. Check package contents for all necessary hardware.
Grass clippings are not being collected effectively.	Clogged chute; full bags; incorrect blade; mowing too fast or grass too tall; metal cover on mower not flipped.	Clear any blockages in the discharge chute. Empty the collection bags. Ensure you are using a blade designed for bagging (if applicable). Reduce mowing speed or cut less grass at a time. Verify the small metal cover on the back of the mower is correctly positioned for bagging.
Mower blades do not spin with bagger attached.	Safety interlock engaged; metal cover on mower not flipped.	Ensure all safety interlocks are disengaged. Specifically, check and flip the small metal cover with a screw on the back of the mower, as this can prevent blade engagement if not correctly set for bagging.
Missing assembly hardware.	Packaging error.	Immediately contact Greenworks customer support with your product model and purchase information to request replacement parts.

SPECIFICATIONS

- **Brand:** Greenworks
- **Model Number:** 30BAG1B
- **Compatibility:** Greenworks 30-inch CrossoverT Riding Mowers
- **Assembly Required:** Yes
- **UPC:** 195526159407
- **Item Type Name:** Bin Bagger

WARRANTY

This Greenworks 30-inch Riding Mower Bagging Kit comes with a **1 Year Limited Warranty**. For detailed warranty terms and conditions, please refer to the warranty card included with your product or visit the official Greenworks website.

SUPPORT

If you encounter any issues not covered in this manual or require further assistance, please contact Greenworks Customer Support. Have your model number (30BAG1B) and purchase date ready when contacting support.

You can typically find contact information on the Greenworks official website or on your product packaging.

