



[Manuals.plus](#) /

› [4smarts](#) /

› 4smarts 100W USB C Charging Station (Model 4S541277) User Manual

4smarts 4S541277

4smarts 100W USB C Charging Station

Model: 4S541277

INTRODUCTION

This manual provides comprehensive instructions for the 4smarts 100W USB C Charging Station, Model 4S541277. This multi-device charging hub is designed to efficiently charge up to six devices simultaneously, offering fast charging capabilities and integrated safety features. Please read this manual thoroughly before using the device to ensure proper operation and to prevent damage.

SAFETY INSTRUCTIONS

Observe the following safety precautions to prevent injury or damage to the device:

- Do not expose the charging station to water, moisture, or extreme temperatures.
- Do not disassemble, modify, or attempt to repair the device. Refer all servicing to qualified personnel.
- Use only the provided power cable and compatible charging cables.
- Ensure adequate ventilation around the charging station during use.
- Disconnect the power cable during lightning storms or when unused for long periods.
- Keep out of reach of children.
- The device features integrated safeguards against overcurrent, overvoltage, overheating, and short circuits.



Figure 1: Integrated safety protections against overcurrent, overvoltage, overtemperature, and short circuits.

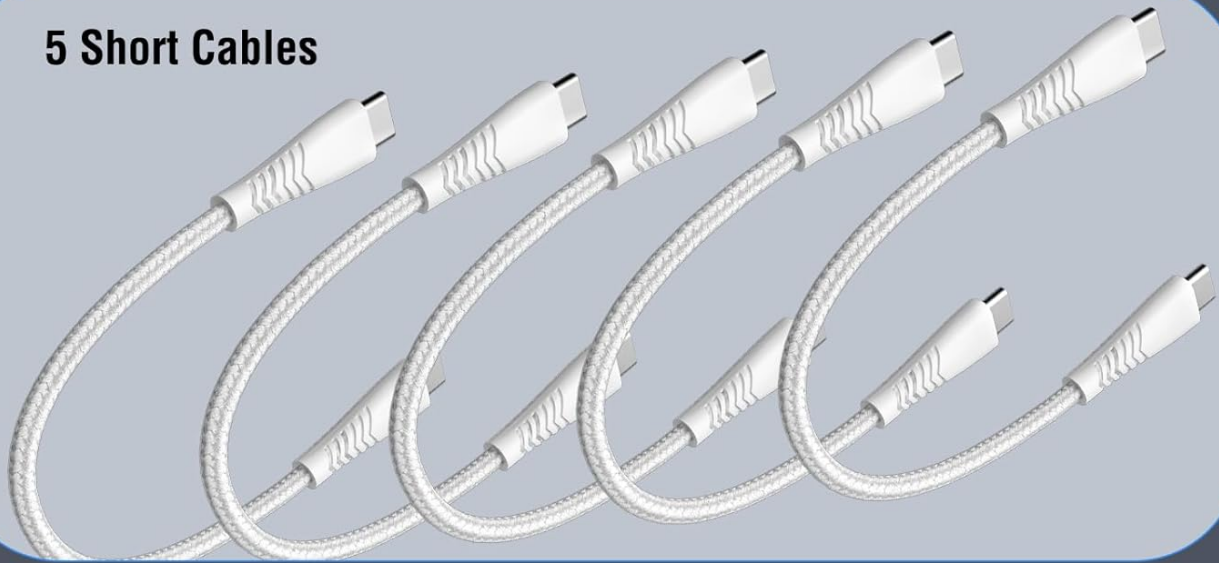
PACKAGE CONTENTS

Verify that all items are present in the package:

- 1x 4smarts 100W USB C Charging Station
- 5x USB-C to USB-C cables (25cm)
- 1x 4-in-1 multi-charging cable (USB-C/Lightning/Micro-USB, 25cm)
- 1x Power cable (1.5m, US plug Type A)
- 1x User Manual

Including All Necessary Cables

5 Short Cables



1 Short Cable



Figure 2: Included charging cables: 5 USB-C to USB-C and 1 multi-charging cable.

All In One Charger Station



Figure 3: The charging station and its included accessories as packaged.

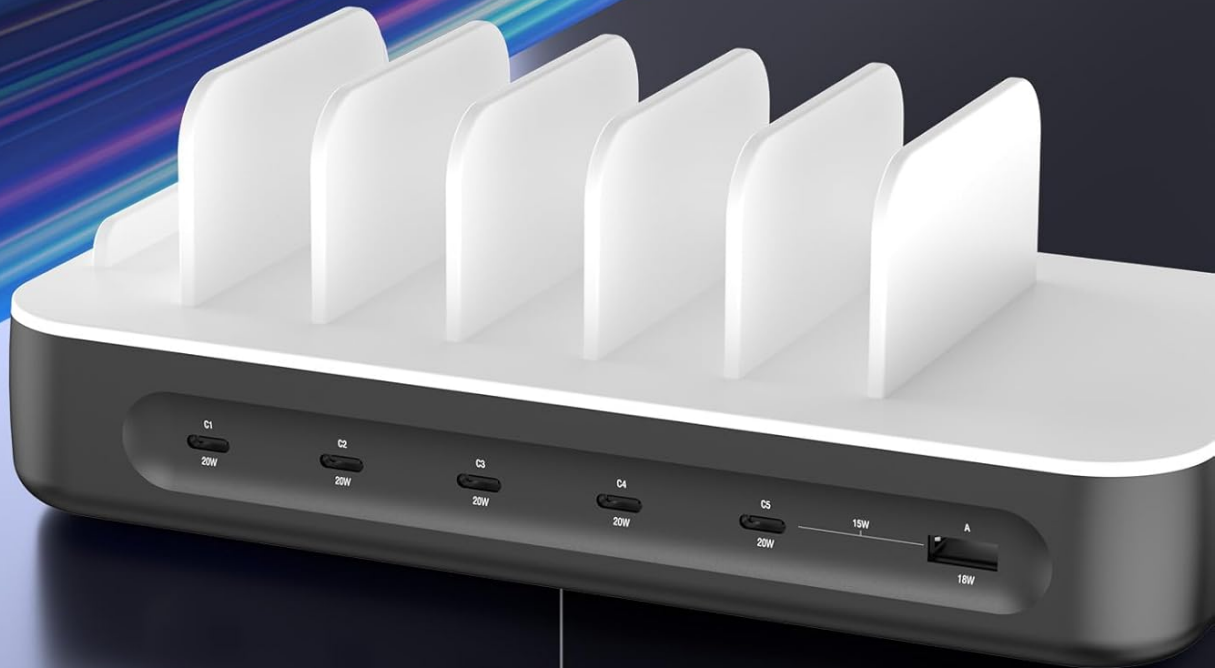
PRODUCT OVERVIEW

The 4smarts 100W USB C Charging Station features multiple ports and a compact design for organizing and charging your devices.

5 USB-C PD Fast Port

Single port max output 20W

USB-Cx5 & USB-Ax1



20W

15W

98W

Figure 4: Front view of the charging station displaying 5 USB-C Power Delivery ports and 1 USB-A port.

High-Speed Charging for Every Port

15W 20W

98W

A side view of the charging station showing the five USB-C ports and one USB-A port. To the right, there are icons for a USB-C port with a horizontal line (15W) and a USB-C port with a vertical line (20W). Below these is a row of five USB-C icons and one USB-A icon, with the text '98W' underneath.

Figure 5: Product dimensions, power switch, and indicator light details.

Components:

- **USB-C PD Ports (x5):** Each port delivers up to 20W for fast charging compatible devices.
- **USB-A Port (x1):** Delivers up to 18W for compatible devices.
- **Power Switch:** Located on the side to turn the unit on or off.
- **LED Indicator Light:** Illuminates when the charging station is powered on.
- **Device Dividers:** Removable dividers to organize and hold devices during charging.

SETUP

1. **Unpack:** Carefully remove all components from the packaging.
2. **Placement:** Place the charging station on a stable, flat, and dry surface with adequate ventilation.
3. **Connect Power:** Insert the provided 1.5m power cable into the AC input port on the back of the charging station, then plug the other end into a standard AC 100-240V wall outlet.
4. **Power On:** Press the power switch to the "ON" position. The LED indicator light will illuminate.
5. **Install Dividers:** Insert the clear plastic dividers into the slots on the charging station to create compartments for your devices.

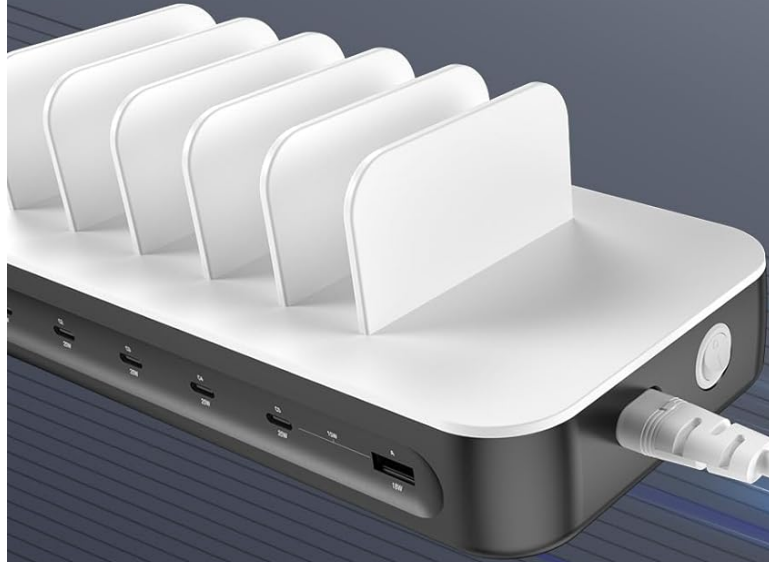
OPERATING INSTRUCTIONS

The 4smarts charging station is designed for efficient and safe charging of multiple devices.

1. **Connect Devices:** Use the appropriate USB-C or multi-charging cables (included) to connect your devices to the available ports on the charging station.
2. **Fast Charging:** The 5 USB-C PD ports support Power Delivery 3.0, providing up to 20W per port for rapid charging of compatible smartphones, tablets, and other devices. The USB-A port supports up to 18W.
3. **Simultaneous Charging:** The station can charge up to 6 devices concurrently with a total output of 100W. The intelligent power distribution system optimizes charging speeds for each connected device.

PD Fast Charging Station

Charging phones up to 50% in 30 mins



98W

30 mins

Charging iPhone 14Pro

Our

50%

Charging

50% 

VS

Charging iPhone 14Pro

Other

30%

Charging

30% 

Figure 6: Demonstration of fast charging capabilities, reaching 50% battery in approximately 30 minutes for compatible devices.

POWER DISTRIBUTION WITH COMBINED OUTPUT



Figure 7: Power distribution chart for combined output across all ports.

Compatibility:

The charging station supports Qualcomm Quick Charge 4+ and PPS protocols, ensuring broad compatibility with devices from Apple, Samsung, Google, Huawei, and other manufacturers. This includes various models of iPhones, iPads, Samsung Galaxy Tabs, Microsoft Surface Go, Amazon Fire HD tablets, wireless earbuds (e.g., AirPods Pro, Galaxy Buds), smartwatches (e.g., Apple Watch, Samsung Galaxy Watch), portable gaming devices (e.g., Nintendo Switch), Kindle e-readers, portable speakers, power banks, and cameras requiring up to 20W charging power.

Universal Compatibility

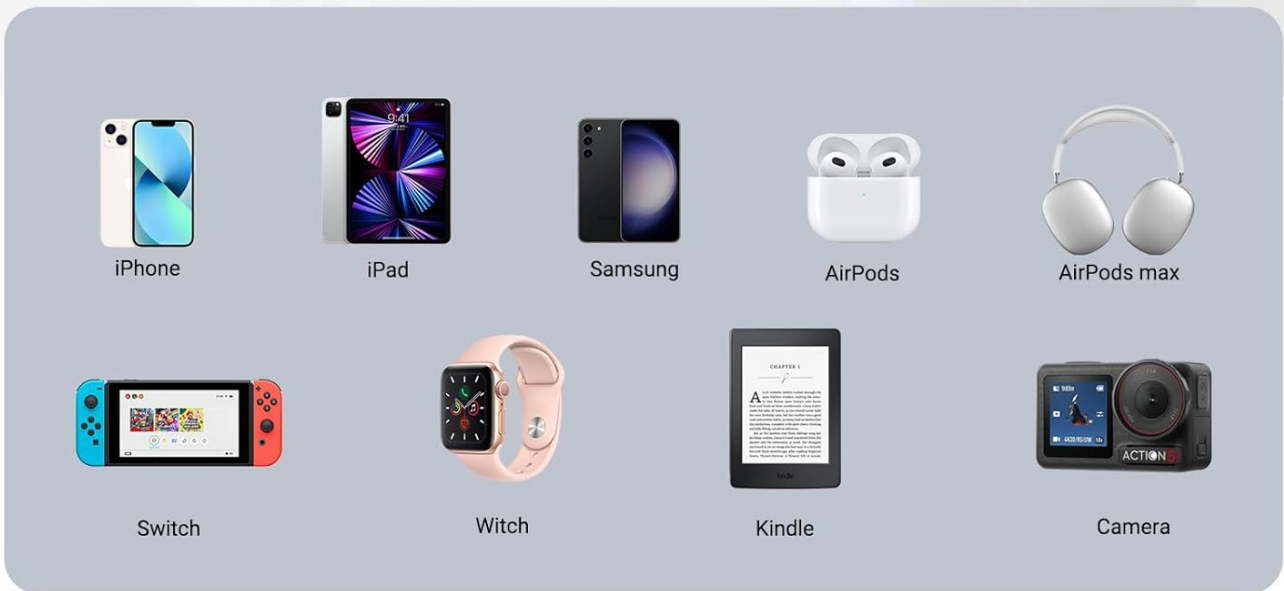


Figure 8: Examples of universally compatible devices.

MAINTENANCE

- **Cleaning:** Disconnect the charging station from the power outlet before cleaning. Use a soft, dry cloth to wipe the surface. Do not use liquid cleaners or aerosols.
- **Storage:** When not in use, store the charging station in a cool, dry place away from direct sunlight and extreme temperatures.

TROUBLESHOOTING

Problem	Possible Cause	Solution
Device not charging.	Charging station is off; cable is faulty; device is incompatible; power outlet issue.	Ensure power switch is ON and indicator light is lit. Try a different cable. Verify device compatibility. Test the power outlet with another appliance.

Problem	Possible Cause	Solution
Slow charging.	Cable is not fast-charge compatible; device does not support fast charging; too many high-power devices connected.	Use a high-quality, fast-charge compatible cable. Ensure your device supports fast charging protocols (PD, QC4+). Disconnect some devices to allow higher power to others.
LED indicator not lit.	No power supply; power switch is off.	Check power cable connection to the station and wall outlet. Ensure the power switch is in the "ON" position.

SPECIFICATIONS

Model Number	4S541277
Input	AC 100-240V, 50/60Hz, 2.1A (US plug Type A)
USB-C Output (x5)	DC 5V/3A, 9V/2.22A, 12V/1.67A (20W max per port)
USB-A Output (x1)	DC 5V/3A, 9V/2A, 12V/1.5A (18W max)
Maximum Total Output	100W
Protection Features	Overcurrent, Overvoltage, Overheating, Short Circuit
Compatibility	Qualcomm Quick Charge 4+, PPS protocols, Apple, Samsung, Google, Huawei ecosystems
Material	Acrylonitrile Butadiene Styrene, Polycarbonate
Weight	0.66 Kilograms
Certifications	CE, FCC, UL

WARRANTY AND SUPPORT

This 4smarts charging station comes with a **1-Year Manufacturer Warranty** from the date of purchase. This warranty covers defects in materials and workmanship under normal use.

For technical support, warranty claims, or further assistance, please contact 4smarts customer service through their official website or the retailer where the product was purchased. Please have your model number (4S541277) and proof of purchase ready.

PRODUCT VIDEO

Watch this official product video for a visual guide on the 4smarts Charging Station Team 5C1A100W.



Video: Overview and demonstration of the 4smarts 100W USB C Charging Station's features and usage.

