

CIARRA CBCB6921

CIARRA CBCB6921 60cm Under-Cabinet Range Hood User Manual

Model: CBCB6921 | Brand: CIARRA

Safety
Instructions

Package
Contents

Installation
Guide

Operating
Instructions

Maintenance

Troubleshooting

Specifications

Warranty &
Support

1. SAFETY INSTRUCTIONS

Please read these instructions carefully before installation and use. Keep this manual for future reference.

- Ensure the electrical installation complies with local regulations and standards.
- Disconnect the appliance from the power supply before any cleaning or maintenance.
- This appliance is not intended for use by persons (including children) with reduced physical, sensory or mental capabilities, or lack of experience and knowledge, unless they have been given supervision or instruction concerning use of the appliance by a person responsible for their safety.
- Children should be supervised to ensure that they do not play with the appliance.
- Do not flambé under the range hood.
- The air must not be discharged into a flue that is used for exhausting fumes from appliances burning gas or other fuels.
- Regularly clean the grease filters to prevent fire hazards.
- There shall be adequate ventilation of the room when the range hood is used at the same time as appliances burning gas or other fuels.

2. PACKAGE CONTENTS

Verify that all components are present and undamaged before proceeding with installation.

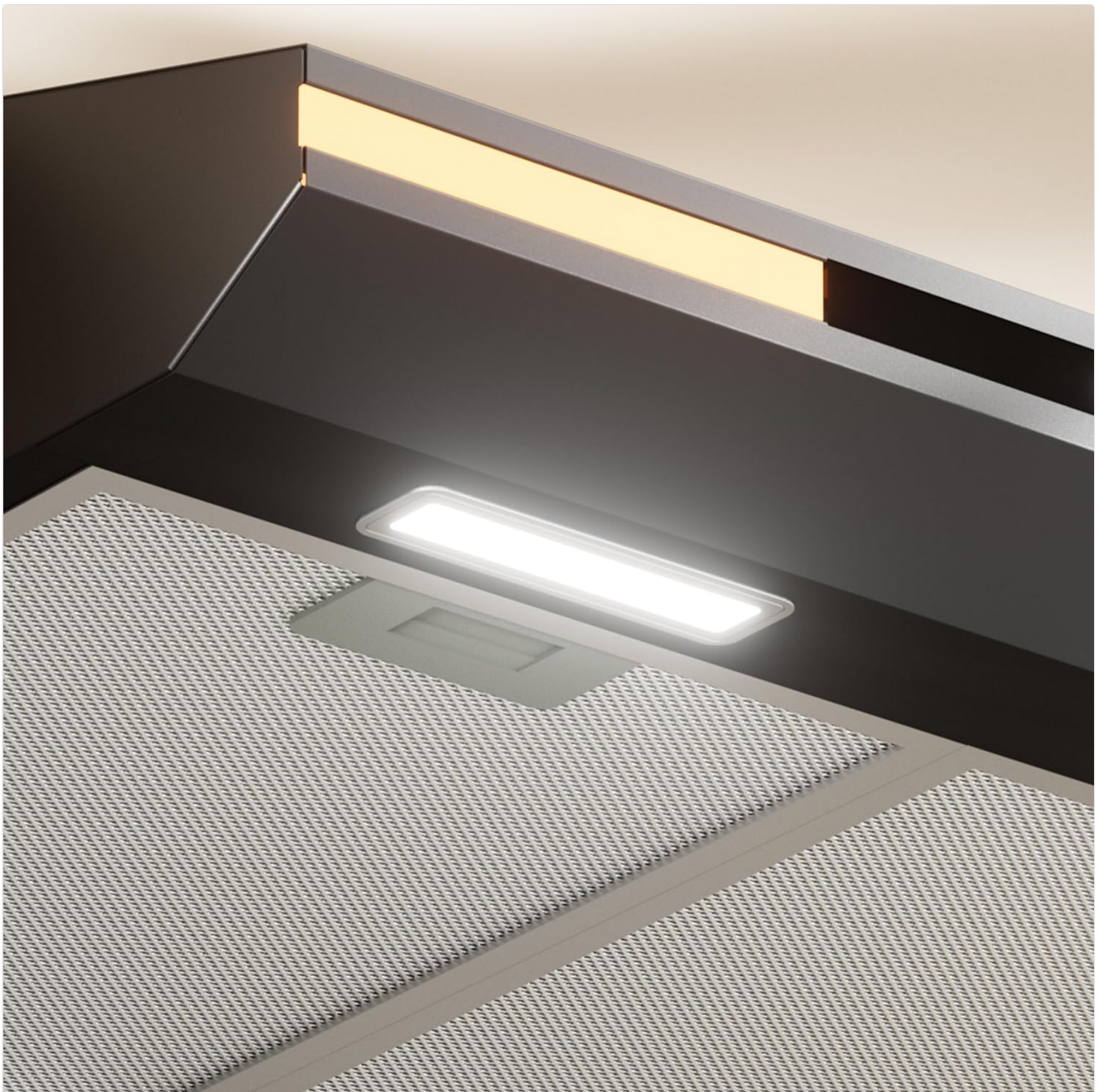


Image: All components included with the CIARRA CBCB6921 Range Hood.

- CIARRA CBCB6921 Range Hood
- 4 x 30mm Mounting Screws
- Wall Plugs (Anchors)
- Air Outlet Assembly
- Air Vent Cover
- Installation Manual
- Charcoal Filter (CBCF011)
- External Cycle Mode Sheet

3. INSTALLATION GUIDE

The CIARRA CBCB6921 range hood can be installed as either an external evacuation (ducted) system or an internal recirculation (ductless) system.

3.1 Mounting Options

This range hood supports both wall-mounted installation above the hob or under-cabinet mounting. Ensure the mounting surface is strong enough to support the weight of the hood.

COMPOSANTS :



Hotte aspirante



4*30mm Vis



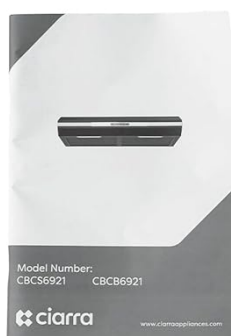
Prise murale



Assemblage de la sortie d'air



Couvercle de la bouche d'aération



Manuel d'installation



Filtre à charbon



Fiche de mode de cycle externe

Image: Detailed dimensions of the CIARRA CBCB6921 Range Hood for installation planning.

3.2 Ducting Modes

The hood can operate in two modes:

- **External Evacuation Mode:** Air is extracted and vented outside through a ducting system. A suitable ducting pipe (not always included) is required.
- **Recirculation Mode:** Air is filtered through the included CBCF011 charcoal filter to remove odors and then recirculated back into the kitchen. This mode is ideal when external venting is not possible.



Image: Illustration of the two operating modes: external evacuation and internal recirculation.

3.3 General Installation Steps (Refer to full manual for details)

1. Measure and mark the drilling points on the wall or under the cabinet according to the provided template.
2. Drill holes and insert wall plugs.
3. Secure the mounting bracket or directly mount the hood using the screws.
4. Connect the ducting if using external evacuation mode.
5. Install the charcoal filter if using recirculation mode.
6. Connect the power supply.

4. OPERATING INSTRUCTIONS

The CIARRA CBCB6921 features a user-friendly touch control panel for easy operation.

Panneau de commande tactile

Réglage facile des niveaux de puissance et de l'éclairage



Image: Touch control panel for fan speed and lighting.

4.1 Power On/Off

Press the power symbol on the touch panel to turn the hood on or off.

4.2 Fan Speed Control

The hood offers 3 ventilation speeds to suit different cooking needs. Press the '1', '2', or '3' buttons on the touch panel to select the desired speed.

3 vitesses de ventilation

Débit d'air maximal jusqu'à 300 m³/h

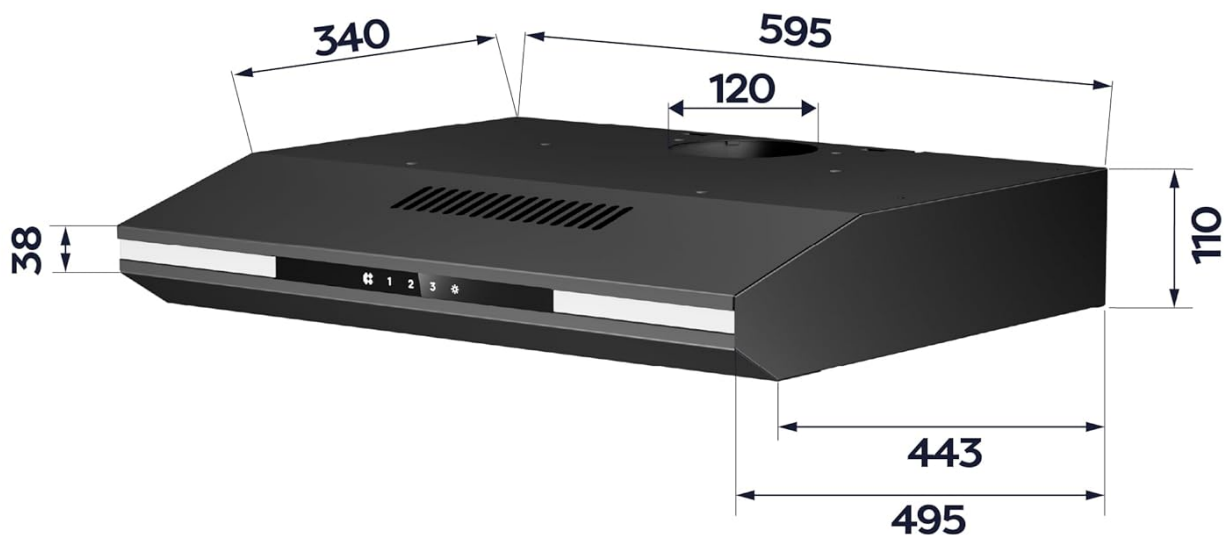


Image: Visual representation of the 3 ventilation speeds and their effectiveness.

- **Speed 1:** Low speed for light cooking or simmering.
- **Speed 2:** Medium speed for general cooking.
- **Speed 3:** High speed for heavy frying or strong odors.

4.3 Lighting Control

Press the light symbol on the touch panel to turn the LED lights on or off. The hood is equipped with energy-efficient LED lighting to illuminate your cooking area.



Unit : mm

Image: Bright LED lights providing illumination for the cooking surface.

5. MAINTENANCE

Regular maintenance ensures optimal performance and extends the lifespan of your range hood.

5.1 Cleaning the Grease Filters

The aluminum grease filters should be cleaned regularly (approximately every 2-4 weeks, depending on usage) to maintain effective grease capture and airflow.



Image: Detail of the aluminum grease filters.

1. Ensure the hood is switched off and disconnected from the power supply.
2. Remove the grease filters by pushing the latch and pulling them down.
3. Wash the filters by hand in hot soapy water or in a dishwasher. Avoid using abrasive cleaners.
4. Rinse thoroughly and allow to dry completely before re-installing.

5.2 Replacing the Charcoal Filter (Recirculation Mode Only)

If using the hood in recirculation mode, the CBCF011 charcoal filter needs to be replaced every 3-6 months, depending on usage, as it cannot be washed.

1. Ensure the hood is switched off and disconnected from the power supply.
2. Remove the grease filters as described above.
3. Locate the charcoal filter(s) and twist or unclip them to remove.
4. Install new CBCF011 charcoal filter(s) by aligning and securing them in place.
5. Re-install the grease filters.

5.3 Cleaning the Exterior

Wipe the exterior surfaces with a soft cloth dampened with mild detergent. Do not use corrosive or abrasive products.

6. TROUBLESHOOTING

Before contacting customer support, please refer to the following common issues and solutions:

Problem	Possible Cause	Solution
Hood does not operate	No power supply	Check if the power cord is properly plugged in and the circuit breaker is on.
Poor extraction performance	Grease filters are dirty	Clean or replace the grease filters.
	Charcoal filter saturated (recirculation mode)	Replace the charcoal filter (CBCF011).
	Ducting obstructed or too long (evacuation mode)	Check ducting for obstructions or excessive length/bends.
Excessive noise	Loose components or improper installation	Check all screws and mounting points are secure.
	Grease filters are dirty	Clean the grease filters.
Lights not working	LED lamp failure	Contact customer support for replacement.

7. TECHNICAL SPECIFICATIONS

Feature	Specification
Brand	CIARRA
Model Number	CBCB6921
Product Dimensions (L x W x H)	59.9 x 29.8 x 20 cm
Weight	6 kilograms
Voltage	220 Volts
Energy Efficiency Class	A+
Annual Energy Consumption	15 kilowatthours per year
Airflow Capacity	Up to 300 m³/h (as per feature bullets) / 600 m³/h (as per specifications) - <i>Note: Discrepancy in source data, using 300 m³/h as stated in feature bullets for user clarity.</i>
Noise Level	Maximum 65 dB
Control Method	Touch Control

Feature	Specification
Number of Speeds	3
Lighting Type	LED (2 x 1W)
Filter Type	Aluminum grease filter, Active charcoal filter (CBCF011)
Ducting Options	External Evacuation / Recirculation
Material	Sandblasted matte
Special Features	Grease filter, Touch panel, Exhaust hood, Recirculation hood, LCD screen

8. WARRANTY AND CUSTOMER SUPPORT

CIARRA products are manufactured to high-quality standards. In the unlikely event of a defect in materials or workmanship, your product is covered by a manufacturer's warranty.

8.1 Warranty Information

Please refer to the warranty card included with your product or visit the official CIARRA website for detailed warranty terms and conditions specific to your region. Keep your proof of purchase for warranty claims.

8.2 Customer Support

For technical assistance, spare parts, or any questions regarding your CIARRA CBCB6921 range hood, please contact CIARRA customer support. Contact details can typically be found on the CIARRA website or in the documentation provided with your product.

You can also visit the [CIARRA Brand Store on Amazon](#) for more information and product updates.