

HONEST BCZ848

HONEST BCZ848 Butane Jet Flame Lighter Instruction Manual

Model: BCZ848

1. IMPORTANT SAFETY INFORMATION

Please read all instructions and safety warnings before using this lighter. Failure to follow these instructions may result in injury or property damage.

- Keep out of reach of children.
- Ignite lighter away from face and clothing.
- Do not expose to heat above 120°F (49°C) or prolonged sunlight.
- Never puncture or incinerate.
- Ensure flame is extinguished after each use.
- Lighter contains flammable butane gas under pressure.
- Do not keep lit for more than 10 seconds.

2. PRODUCT OVERVIEW

The HONEST BCZ848 is a refillable butane jet flame lighter designed for various uses. It features an adjustable flame and a robust construction.

Mini Torch Lighter



Image 2.1: The HONEST BCZ848 Butane Jet Flame Lighter. This image displays the overall design of the lighter, highlighting its compact form factor and distinctive pattern.

3. SETUP AND INITIAL USE

3.1. Refilling the Lighter

The lighter is shipped without gas and must be refilled before use. Use only high-quality butane gas.

1. Ensure the lighter is completely empty of gas. Press the ignition button to release any residual gas.
2. Turn the lighter upside down. Locate the refill valve at the bottom.
3. Insert the nozzle of the butane gas canister vertically into the refill valve.
4. Press down firmly for 5-10 seconds. Repeat 2-3 times to ensure a full refill.
5. Wait for at least 2-3 minutes after refilling before attempting to ignite the lighter. This allows the gas to stabilize and reach room temperature.

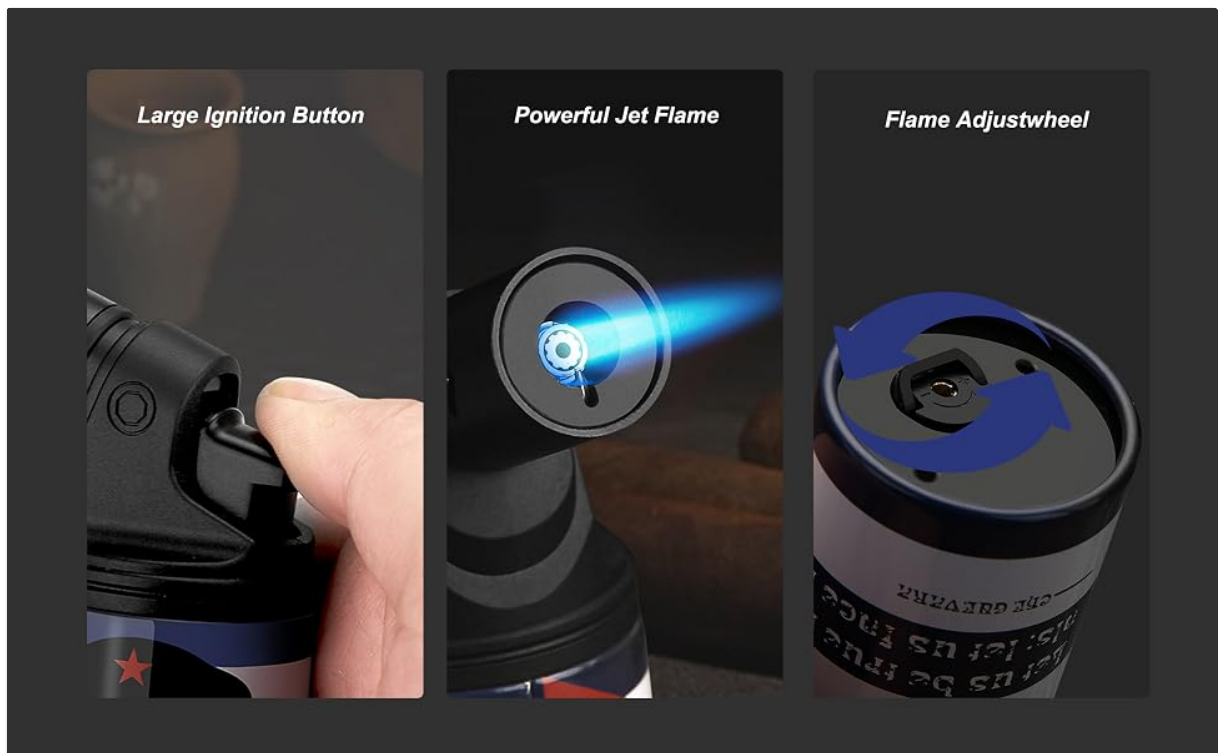


Image 3.1: The bottom of the lighter, illustrating the flame adjustment wheel and the butane refill port. The blue arrows indicate the direction for increasing or decreasing the flame.

3.2. Adjusting the Flame

The flame size can be adjusted using the wheel located at the bottom of the lighter.

- Turn the black wheel towards the "+" symbol to increase the flame size.
- Turn the black wheel towards the "-" symbol to reduce the flame size.
- Adjust the flame to a moderate height before ignition for optimal performance and safety.

4. OPERATING THE LIGHTER

4.1. Ignition

To ignite the lighter:

1. Hold the lighter firmly.
2. Press the large ignition button located on the side of the lighter. A jet flame will appear from the nozzle.
3. Release the button to extinguish the flame.

Multi-purpose Lighter



Image 4.1: Close-up view of the lighter demonstrating the large ignition button, the powerful jet flame, and the flame adjustment wheel. This image highlights the key operational components.

Video 4.1: This video demonstrates the ignition process and the powerful jet flame of the HONEST BCZ848 lighter. It shows a hand pressing the ignition button and the flame igniting a cigar.

5. MAINTENANCE

5.1. Cleaning

Periodically clean the lighter with a soft, dry cloth to remove any dust or debris. Do not use abrasive cleaners or solvents.

5.2. Storage

Store the lighter in a cool, dry place, away from direct sunlight and heat sources. Ensure the lighter is empty of fuel if storing for extended periods.

6. TROUBLESHOOTING

- **Lighter does not ignite:**
 - Check if the lighter has sufficient butane fuel. Refill if necessary.
 - Ensure the flame adjustment is not set too low. Increase the flame setting.
 - If recently refilled, wait a few minutes for the gas to stabilize.
 - Purge any air from the tank by pressing the refill valve with a small tool until no gas escapes, then refill.
- **Flame is weak or inconsistent:**
 - The fuel level may be low. Refill the lighter.
 - Adjust the flame setting to a higher level.
 - Ensure the butane used is of high quality. Impurities can affect flame performance.

- **Gas leaks from the refill valve:**

- Ensure the butane canister nozzle is properly aligned and pressed firmly during refilling.
- If the leak persists, the valve may be damaged. Discontinue use and contact customer support.

7. SPECIFICATIONS

Brand	HONEST
Model Number	BCZ848
Material	Aluminum & Tin Box
Item Weight	100 Grams
Fuel Type	Butane
Product Dimensions (L x W x Th)	4.75" x 1.6" x 3.1" (120.65mm x 40.64mm x 78.74mm)



Image 7.1: Diagram showing the key dimensions of the HONEST BCZ848 lighter, including height, width, and length.

8. WARRANTY AND SUPPORT

Specific warranty information and direct customer support contact details are not provided in the available product data. For any issues or inquiries, please refer to the retailer or the official HONEST brand website if available.