

## TYMO TYMO Ionic Mini Hair Straightener Brush

# TYMO Ionic Mini Hair Straightener Brush Instruction Manual

Model: TYMO Ionic Mini

## 1. SAFETY INFORMATION

Please read all safety instructions carefully before using the TYMO Ionic Mini Hair Straightener Brush to ensure safe operation and prevent injury.

- **Warning:** Never let heated bristles touch your ears, face, neck, or any part of your skin. This product can cause burns if misused.
- **Electrical Safety:** This product is not GFCI protected. Always plug the device into a Ground Fault Circuit Interrupter (GFCI) protected outlet, especially in bathrooms or near water sources, to protect against electrical shock.
- **Automatic Shut-off:** For added safety, the device features a 60-minute auto-off function. If left unattended, it will automatically power down after 60 minutes.
- **Cool-Tip Bristles:** The cool-tip and side bristles are designed to help prevent burns to your hands and scalp during use.

## 2. PRODUCT OVERVIEW



Figure 1: The TYMO Ionic Mini Hair Straightener Brush, showcasing its sleek black design with red accents on the bristles and a digital temperature display on the handle.

The TYMO Ionic Mini Hair Straightener Brush is a compact and powerful styling tool designed for efficient hair straightening. It features advanced ionic technology and wave-design bristles for smooth, frizz-free results.

### Key Features:

- **Wave-Design Teeth:** Patented design for nearly 2x heat coverage and a tighter grip, ensuring faster, one-pass results.
- **Ionic Technology:** Equipped with 8 ion vents releasing 1 billion negative ions to minimize frizz and boost shine.
- **T-Sensor Technology:** Monitors and intelligently adjusts heat in real-time to prevent overheating and hair damage.
- **T-GLOSS Ceramic-Coated Bristles:** Designed to glide smoothly through hair, reducing snagging and breakage.
- **Lightweight & Ergonomic:** Weighing just 0.53 lb, it's easy to handle with an ergonomic design to prevent hand fatigue.
- **Dual Voltage:** Supports 100-240V for international travel convenience.

### 3. SETUP

Before first use, unpack all components and familiarize yourself with the device.

#### Package Contents:

- TYMO Ionic Mini Hair Straightener Brush
- Travel Pouch
- Cleaning Brush

#### Initial Preparation:

1. Ensure your hair is dry and detangled before use.
2. Plug the device into a suitable electrical outlet. The digital display will illuminate.
3. The device heats up quickly, reaching optimal temperature in approximately 20 seconds.

### 4. OPERATING INSTRUCTIONS

Follow these steps for effective and safe hair straightening.

#### Temperature Settings:

1 BILLION + NEGATIVE IONS

## Shine. Smooth. Every Strand

Minimizes Static & Frizz

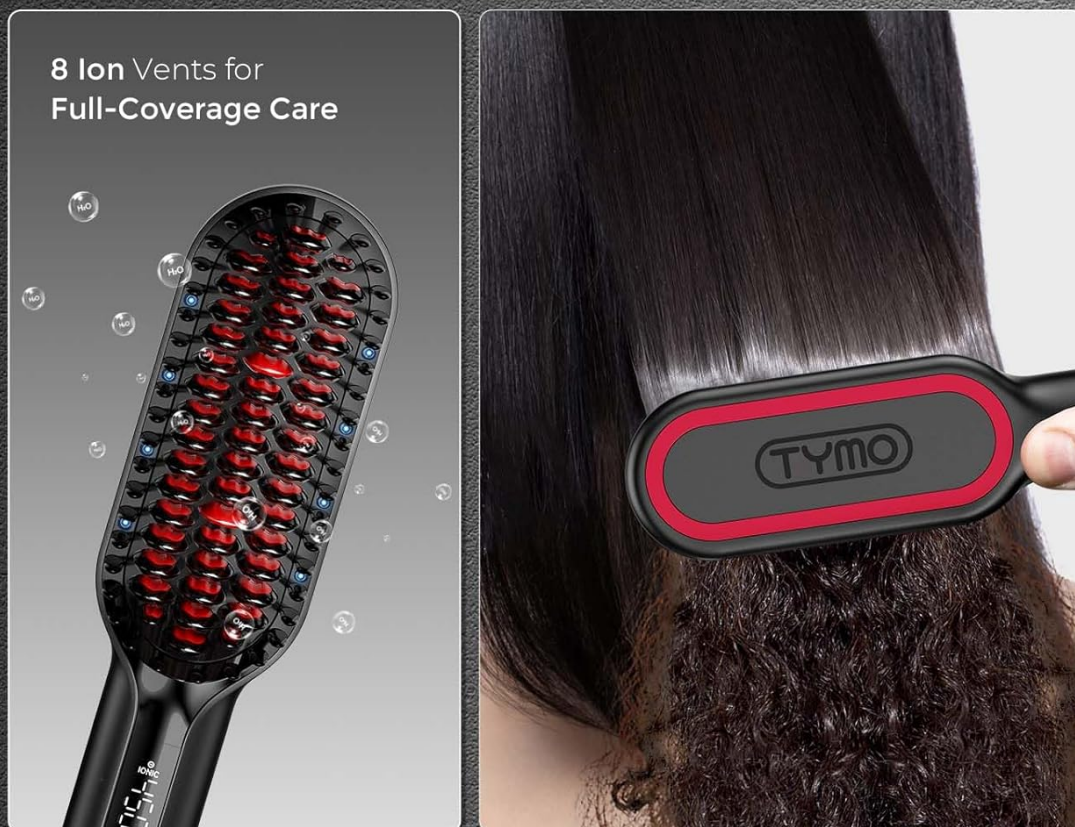


Figure 2: Illustration of the TYMO Ionic Mini's ion vents and how it minimizes static and frizz for shinier results.

- The TYMO Ionic Mini offers 16 temperature settings, ranging from 180°F to 450°F (82°C to 232°C).
- Use the '+' and '-' buttons on the handle to adjust the temperature. The digital display will show the current temperature.
- For initial use or if unsure, start with a lower temperature setting and gradually increase as needed for your hair type.
- The T-Sensor technology will intelligently adjust the heat to prevent overheating and damage to your hair.

### Straightening Process:



PATENT WAVE-DESIGN TEETH

# Mini Size, **Max Straightening**

Wave-Design Teeth for one-pass straightening



Figure 3: Close-up view of the patented Wave-Design Teeth, illustrating how they provide wider heat coverage and a tighter grip for efficient straightening.

1. Divide your dry, detangled hair into manageable sections.
2. Take a section of hair and slowly brush through it from root to tip, ensuring the bristles fully penetrate the hair.
3. The Wave-Design Teeth and T-GLOSS ceramic-coated bristles are designed for smooth, one-pass straightening.
4. Repeat for all sections of hair until desired straightness is achieved.
5. The 360° swivel cord allows for flexible styling without tangles.



ONE PASS SMOOTH TECH

# Instant Straight in 10 Mins

Time-saving for your busy routine

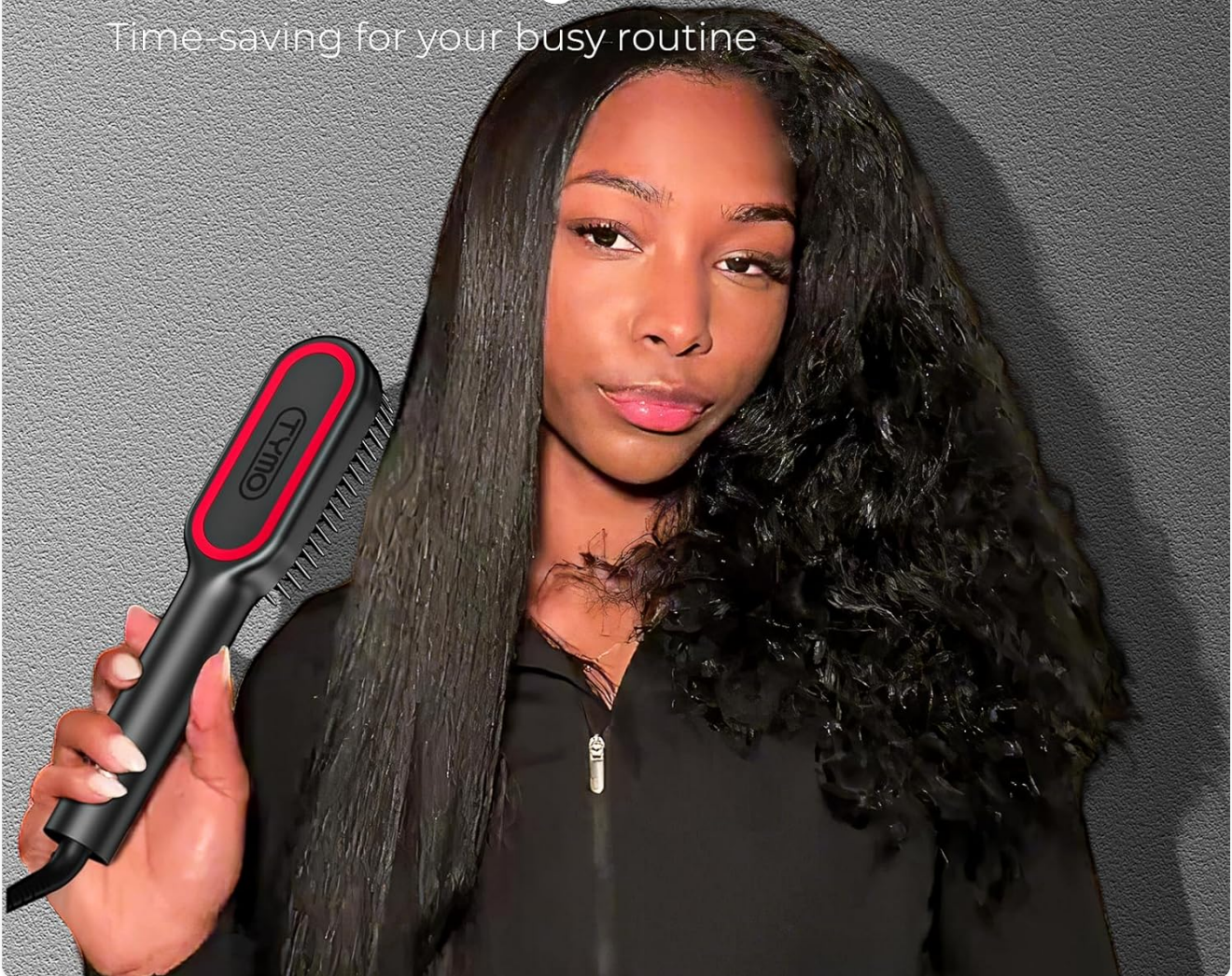


Figure 4: A visual comparison showing the transformation from curly, frizzy hair to smooth, straight hair after using the TYMO Ionic Mini.

## 5. MAINTENANCE

Proper maintenance ensures the longevity and optimal performance of your hair straightener brush.

1. Always unplug the device and allow it to cool completely before cleaning.
2. Use the provided cleaning brush to gently remove any hair or debris from the bristles.
3. Wipe the body of the brush with a soft, damp cloth. Do not use harsh chemicals or abrasive cleaners.
4. Store the brush in its travel pouch in a dry, safe place when not in use.

## 6. TROUBLESHOOTING

If you encounter any issues with your TYMO Ionic Mini Hair Straightener Brush, refer to the following common solutions.

Problem	Possible Cause	Solution
Device not turning on.	Not properly plugged in; power outlet issue.	Ensure the power cord is securely plugged into a working GFCI outlet. Try a different outlet.
Not heating up sufficiently.	Incorrect temperature setting; device malfunction.	Increase the temperature setting using the '+' button. Ensure the device has had sufficient time to heat up (approx. 20 seconds). If problem persists, contact customer support.
Hair not straightening effectively.	Hair is wet; sections too large; improper technique.	Ensure hair is completely dry. Work with smaller sections of hair. Brush slowly from root to tip, allowing bristles to fully engage.
Frizz or static after styling.	Insufficient ionic output; environmental factors.	Ensure the device is fully heated. The 1 billion negative ions are designed to reduce frizz and static. If issues persist, ensure hair is clean and free of heavy product buildup.

If troubleshooting steps do not resolve the issue, please contact TYMO customer support for further assistance.

## 7. SPECIFICATIONS

- **Product Dimensions:** 9 x 1.3 x 1.3 inches
- **Weight:** 1.15 Pounds (0.53 kg)
- **Material:** Ceramic
- **Color:** Black
- **Power Source:** Corded Electric
- **Voltage:** 100-240V (Dual Voltage)
- **Temperature Range:** 180°F - 450°F (82°C - 232°C)
- **Heat-up Time:** Approximately 20 seconds
- **Auto-off:** 60 minutes
- **Hair Type Compatibility:** All
- **Manufacturer:** TYMO
- **Date First Available:** June 30, 2025

## 8. WARRANTY AND SUPPORT

TYMO is committed to providing high-quality products. While specific warranty details are not provided in this manual, please retain your proof of purchase for any warranty claims.

For product support, technical assistance, or warranty inquiries, please contact TYMO customer service through their official





**TYMO**  
**RING PLUS**  
IONIC HAIR  
STRAIGHTENING COMB  
USER MANUAL



[TYMO Ring Plus Ionic Hair Straightening Comb User Manual](#)

Comprehensive user manual for the TYMO Ring Plus Ionic Hair Straightening Comb, detailing its features, specifications, operating instructions, safety precautions, and warranty information.

**TYMO**  
**TYMO IONIC**  
HAIR STRAIGHTENING BRUSH  
USER MANUAL



[TYMO Ionic Hair Straightening Brush HC101 User Manual](#)

Comprehensive user manual for the TYMO Ionic Hair Straightening Brush (Model HC101), detailing usage, safety, specifications, and maintenance for optimal hair styling.