

Manuals.plus /

- › Seesii /
- › Seesii 21V 2000mAh Rechargeable Lithium-Ion Battery User Manual

Seesii LH012

Seesii 21V 2000mAh Rechargeable Lithium-Ion Battery User Manual

Model: LH012

INTRODUCTION

This manual provides essential information for the safe and effective use of your Seesii 21V 2000mAh Rechargeable Lithium-Ion Battery (Model LH012). Please read these instructions carefully before first use and retain them for future reference. This battery is designed to power various Seesii 21V cordless tools, offering reliable and long-lasting performance.



Image: Front view of the Seesii 21V 2000mAh rechargeable lithium-ion battery, showing its black casing with red accents, power indicator, and specifications.

PRODUCT FEATURES

- **Original Quality and Safety:** This official Seesii battery is designed to strictly match Seesii equipment circuit designs, ensuring compatibility and preventing issues. It features a built-in intelligent protection chip to prevent overcharging, over-discharging, short circuits, and overheating, thereby extending equipment life.
- **Long-Lasting Performance:** With a 2000mAh high energy density, the battery provides extended usage times, suitable for high-intensity operations and reducing the need for frequent battery changes.
- **Universal Compatibility:** Compatible with most Seesii 21V cordless tools, including electric saws, pruning shears, impact wrenches, caulking guns, and more. This allows for a single battery to power multiple tools.
- **Efficient Fast Charging:** Supports fast charging, optimized for use with original Seesii chargers. Its low self-discharge design minimizes power loss during idle periods, ensuring it's ready for use when needed.
- **Durable and Environmentally Friendly:** Offers a lithium battery cycle life of ≥ 500 times, contributing to lower long-term usage costs. It has no memory effect, allowing for charging and use at any time without requiring a full discharge.
- **Smart LED Light:** Features an integrated LED indicator to display the current charge level, allowing users to monitor battery status easily.
- **Lightweight Design:** Weighing approximately 0.77 lbs, this battery is designed to be lighter than traditional batteries, enhancing user comfort during extended use.



Image: Close-up view of the Seesii 21V 2000mAh battery, highlighting the green LED power indicator lights, showing a full charge.

Built-In Safety System



Overheating
Protection



Overvoltage
Protection



Short-Circuit
Protection



Overdischarge
Protection



Overcharge
Protection



Overcurrent
Protection

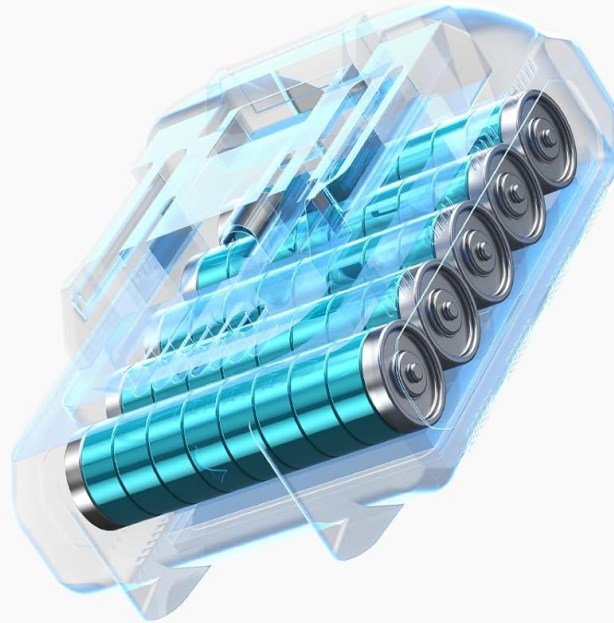


Image: Diagram illustrating the compatibility of the Seesii 21V 2000mAh battery with various Seesii tools, including chainsaws, pole saws, tile vibration tools, angle grinders, impact wrenches, caulking guns, and grease guns.



Image: A person demonstrating the lightweight nature of the Seesii 21V 2000mAh battery by easily carrying it in a pocket, emphasizing its portability.

SAFETY INSTRUCTIONS

To ensure safe operation and prolong the life of your battery, observe the following safety guidelines:

- Always use the battery with compatible Seesii 21V tools and original Seesii chargers.
- Do not expose the battery to water, moisture, or extreme temperatures (above 50°C / 122°F or below -10°C / 14°F).
- Avoid short-circuiting the battery terminals.
- Do not attempt to open, disassemble, or modify the battery pack.
- If the battery is damaged, punctured, or shows signs of leakage, discontinue use immediately and dispose of it properly.
- Keep the battery away from children and pets.
- Charge the battery in a well-ventilated area, away from flammable materials.
- Do not incinerate the battery.

2000mAh Capacity

Power That Lasts



Image: Illustration of the Seesii battery's internal safety system, detailing protections against overheating, overvoltage, short-circuit, overdischarge, overcharge, and overcurrent.

SETUP

1. Charging the Battery

1. Ensure the battery is clean and dry before charging.
2. Connect the Seesii 21V 2000mAh battery to an original Seesii charger.
3. Plug the charger into a standard power outlet.
4. The LED indicator on the battery will show the charging status. A full charge is indicated when all LED segments are lit and steady.
5. Once fully charged, disconnect the battery from the charger. Avoid leaving the battery on the charger for extended periods after it is fully charged.

2. Installing the Battery

1. Ensure the power tool is switched off before installing or removing the battery.
2. Align the battery with the battery slot on your Seesii 21V cordless tool.
3. Slide the battery firmly into the slot until it clicks into place, indicating it is securely locked.

- To remove the battery, press the release button (usually located on the battery or tool) and slide the battery out.

OPERATING INSTRUCTIONS

Once the battery is charged and installed, your Seesii 21V cordless tool is ready for operation. Refer to your specific tool's instruction manual for detailed operating procedures.

- Always ensure the battery is fully charged for optimal performance.
- Monitor the battery's LED indicator during use to gauge remaining power.
- If the tool's performance decreases significantly, it indicates the battery needs recharging.
- Avoid completely draining the battery to 0% charge frequently, as this can reduce its overall lifespan.



Ready for DIY, Yard Work, and More

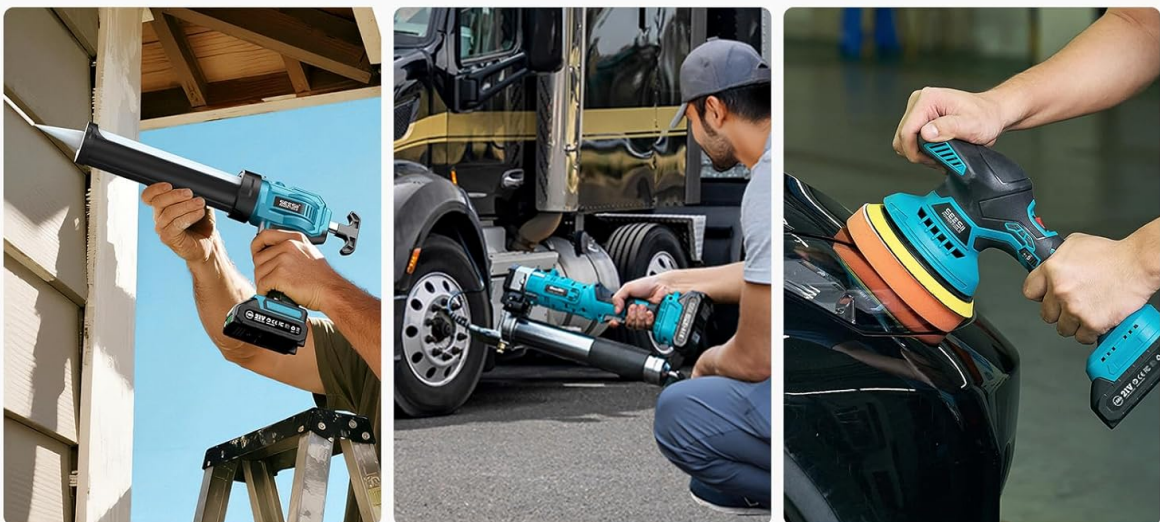


Image: Collage showing the Seesii 21V battery powering various tools in different applications, including pruning shears, a mini chainsaw cutting wood, a pole saw, a caulking gun, an impact wrench on a vehicle, and a polisher.

MAINTENANCE

- **Cleaning:** Keep the battery terminals clean and free from dirt or debris. Use a dry cloth to wipe the battery surface. Do not use solvents or abrasive cleaners.

- **Storage:** Store the battery in a cool, dry place, away from direct sunlight and extreme temperatures. For long-term storage, it is recommended to store the battery with a partial charge (around 50-70%) rather than fully charged or fully discharged.
- **Disposal:** Do not dispose of lithium-ion batteries in household waste. They must be recycled or disposed of according to local regulations. Contact your local waste management authority for information on proper disposal.
- **Cycle Life:** The battery has a cycle life of ≥ 500 charges. Proper charging and storage practices can help maximize its lifespan.

TROUBLESHOOTING

Problem	Possible Cause	Solution
Battery not charging	Charger not plugged in; faulty charger; battery too hot/cold; damaged battery.	Check charger connection; try a different outlet/charger; allow battery to reach room temperature; inspect battery for damage.
Tool not powering on with battery	Battery not fully charged; battery not properly installed; faulty tool; damaged battery.	Ensure battery is fully charged; re-install battery securely; test battery with another compatible tool; inspect battery for damage.
Battery drains quickly	Battery nearing end of lifespan; extreme operating conditions; heavy tool usage.	Consider replacing battery if cycle life is exceeded; operate within recommended temperature ranges; ensure tool is not overloaded.

If troubleshooting steps do not resolve the issue, please contact Seesii customer support.

SPECIFICATIONS

Specification	Value
Model Number	LH012
Voltage	21V
Battery Capacity	2000mAh (2 Milliamp Hours)
Battery Cell Composition	Lithium Ion
Item Weight	12 ounces (approximately 0.77 lbs)
Package Dimensions	7.87 x 5 x 3.23 inches
Manufacturer	Seesii
Recommended Uses	Seesii cordless tools (e.g., caulking gun, chainsaw, pruning shears)

WARRANTY AND SUPPORT

For warranty information, technical support, or service inquiries regarding your Seesii 21V 2000mAh Rechargeable Lithium-Ion Battery, please contact Seesii customer support directly. Refer to the product packaging or the official Seesii website for the most current contact details.

Manufacturer: Seesii

Brand: Seesii