

## HYPER GO H14BMV3

# HYPER GO 14210 H14BM V3 RC Car Instruction Manual

Model: H14BMV3 | Brand: HYPER GO

### IMPORTANT SAFETY INFORMATION

This product is not a toy and is not intended for children under 14 years of age. Always operate the RC car in a safe environment, away from people, pets, and obstacles. Read all instructions before use.

### WHAT'S IN THE BOX

- Battery
- Charging Cable
- Product Manual
- Remote
- Hexagonal Wrench



The image displays the HYPER GO 14210 H14BM V3 RC Car along with its complete set of accessories, including the remote control, extra body shell, additional wheels, and two 3S 2000 mAh rechargeable batteries.

## SETUP

---

### 1. Initial Inspection

Carefully unpack all components and inspect for any visible damage. Ensure all parts listed in "What's in the Box" are present.

### 2. Battery Charging and Installation

Connect the provided charging cable to the 3S LiPo battery and a suitable USB power source. Charge the battery fully before first use. Once charged, install the battery securely into the RC car's battery compartment. Ensure the battery is properly connected to the ESC.

### 3. Transmitter Setup

Install batteries into the 2.4GHz 3-Channel Radio transmitter. Power on the transmitter first, then the RC car. The transmitter features ST/TH Trim functions for fine-tuning steering and throttle. For new users, the throttle can be limited to 70% for easier control. Refer to the transmitter diagram for control identification.



The transmitter features a power switch, throttle limiter (70%/100%), ST/TH trim, and light control. This image shows the transmitter with its various controls labeled, including the throttle limit switch.

## OPERATING INSTRUCTIONS

---

### 1. Basic Operation

Use the trigger on the transmitter to control forward and reverse movement. Push the trigger forward for reverse/brake, and pull it back for acceleration. The steering wheel controls left and right turns. Practice in an open area to familiarize yourself with the controls.

### 2. Speed Control and Unlocking

The RC car has a factory speed limit of approximately 33 mph. To unlock the full speed potential (up to 50 mph with an Angry Snail 3S2000 battery, or 45+ mph with the included 3S battery), press the SET button on the ESC 5 times. This will allow the car to reach its maximum speed capabilities.



The image highlights the brushless 2852 4400KV motor and the independent E45K2 ESC, which allows for speed unlocking by pressing the SET button 5 times.

### 3. All-Terrain Driving

The HYPER GO RC car is designed for various terrains. Its multi-terrain airless style tires (111mm diameter) are suitable for grass, gravel, and dirt roads. The included extra paddle tires are ideal for extreme conditions like snow, sand, and mud, providing enhanced traction. The adjustable, oil-filled shocks ensure stable driving even at high speeds over uneven surfaces.





This image shows the RC car with its paddle tires, designed for snow and sand, and highlights the waterproof receiver box, ensuring durability in various conditions.

## MAINTENANCE

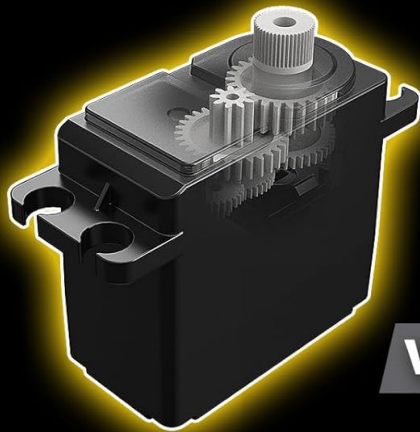
### 1. General Cleaning

After each use, especially in dirty or wet conditions, clean the RC car to remove dirt, dust, and debris. Use a soft brush or compressed air for hard-to-reach areas. Avoid using water directly on electronic components unless specified as waterproof.

### 2. Component Inspection

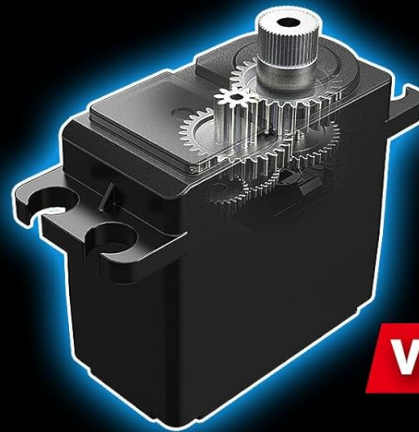
Regularly inspect the steel differential, powder metallurgy transmission spur and pinion, heavy-duty drivetrain, and steel universal telescopic drive shaft for wear or damage. Check the aluminum alloy chassis for any bends or cracks. Ensure all screws and fasteners are tight.

## The difference between V2 and V3



**V2**

**Plastic Gears**



**V3**

**Metal gears for durability and agility**



**V2**



**V3**

**Less low-speed lag and more silky smoothness**

This image illustrates the difference between V2 (plastic gears) and V3 (metal gears) components, emphasizing the enhanced durability and agility of the V3's metal gears.

### 3. Shock Absorbers

The oil-filled shocks are designed for optimal performance. Periodically check them for leaks or reduced damping. If necessary, refill or replace the shock oil according to hobby-grade RC maintenance practices.





A detailed view of the new design adjustable, oil-filled shocks, highlighting their dimensions and construction for improved driving quality.

## TROUBLESHOOTING

| Problem                             | Possible Cause   | Solution   |
|-------------------------------------|--|--|
| Car does not respond to transmitter | Low battery in car or transmitter; Not properly bound; Power switch off. | Charge batteries; Re-bind transmitter and receiver; Ensure both are powered on.          |
| Reduced speed or power              | Low battery; Speed limit engaged; Motor/ESC overheating.                 | Recharge battery; Unlock speed limit (press SET 5 times); Allow components to cool down. |
| Car pulls to one side               | Steering trim incorrect; Damaged steering components.                    | Adjust ST Trim on transmitter; Inspect steering servo and linkages for damage.           |
| Unstable at high speeds             | Improper shock setup; Loose components; Uneven tire wear.                | Check and adjust oil-filled shocks; Tighten all fasteners; Inspect tires.                |

## SPECIFICATIONS

**Product Dimensions:** 12.71 x 8.66 x 4.64 inches

**Item Weight:** 5.7 pounds

**Item Model Number:** H14BMV3

**Manufacturer Recommended Age:** 14 years and up

**Batteries:** 1 Lithium Ion battery required (included)

**Motor:** Hobby 2852 4400KV, 4 pole high-torque brushless motor

**ESC:** Independent 45A ESC (compatible 2S/3S battery)

**Chassis:** 6061 Aluminum Alloy

**Tires:** Multi-terrain airless style (111mm diameter), extra paddle tires included

**Shocks:** Adjustable, oil-filled



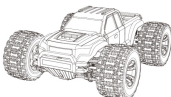
**Transmitter:** 300+ FT 2.4GHz 3-Channel Radio

WARRANTY AND SUPPORT

For warranty information, technical support, or replacement parts, please contact HYPER GO customer service directly. Refer to the packaging or the official HYPER GO website for contact details.

**Manufacturer:** HYPER GO

Related Documents - H14BMV3

|   |  |
|---|--|
| <div><div>No.10303</div><div>14+</div><div><div><b>HYPER GO</b></div><div>1:14 RC HIGH SPEED CAR</div><div>USER MANUAL</div></div><div></div><div><div>V2.0</div><div><b>4WD</b></div></div></div> | <p><a href="#">Hyper Go 1:14 RC High Speed Car User Manual</a></p> <p>User manual for the Hyper Go 1:14 RC High Speed Car, covering setup, operation, safety precautions, and technical specifications.</p>  |
| <div><div>No.14210</div><div>14+</div><div><div><b>HYPER GO</b></div><div>1:14 RC HIGH SPEED CAR</div><div>USER MANUAL</div></div><div></div><div><div><b>4WD</b></div></div></div>                | <p><a href="#">Hyper GO 1:14 RC High Speed Car User Manual</a></p> <p>User manual for the Hyper GO 1:14 RC High Speed Car, providing operating instructions, safety precautions, technical specifications, and spare parts information.</p>  |
| <div><div>No.14208</div><div>14+</div><div><div><b>HYPER GO</b></div><div>1:14 RC HIGH SPEED CAR</div><div>USER MANUAL</div></div><div></div><div><div><b>4WD</b></div></div></div>                | <p><a href="#">Hyper Go 1:14 RC High Speed Car User Manual - Assembly, Operation, and Parts Guide</a></p> <p>Comprehensive user manual for the Hyper Go 1:14 RC High Speed Car (Model No. 14208). Includes assembly instructions, operating procedures, safety precautions, and a detailed parts list for maintenance and customization.</p> |

