

M01

AI Smart Glasses User Manual

Model: M01 | Brand: Generic

1. INTRODUCTION

The AI Smart Glasses M01 are a multifunctional device designed to enhance daily communication and entertainment. These glasses integrate advanced AI translation capabilities, smart assistant features, and high-quality audio for a seamless user experience. They are equipped with physical color-changing lenses and are IP67 waterproof, making them suitable for various environments.

Key Features:

- AI Translation: Supports 164 languages for real-time translation, voice notes, and picture translation.
- AI Chat: Integrates DeepSeek R1 and Gemini-2.5 AI systems for multi-scenario conversations.
- Bluetooth 5.3: Ensures stable connectivity with iOS and Android devices.
- Superior Audio Quality: Features speakers on both temples with audio enhancement and noise-cancellation microphones.
- Hands-Free Calling & Music Playback: Built-in microphones for clear calls and immersive music.
- Touch and Voice Assistant Control: Easy control via touch buttons and voice commands.
- Blue Light Filtering / Photochromic Lenses: UV400 polarized lenses adapt to light conditions, protecting eyes.
- IP67 Waterproof: Designed to withstand sweat and rain.

2. WHAT'S IN THE BOX

Upon unboxing your AI Smart Glasses, please ensure all components are present:

- AI Smart Glasses (M01)
- Charging Cable
- User Manual (this document)
- Speaker
- Microphone
- Cleaning Cloth
- Carrying Case

3. SETUP GUIDE

3.1. Charging the Glasses

Before first use, fully charge your AI Smart Glasses. Connect the provided charging cable to the charging port on the glasses and a compatible USB power source. The indicator light will show charging status.

3.2. App Download and Installation

To unlock the full potential of your AI Smart Glasses, download and install the companion application. There are two methods:

- Method 1: Scan QR Code**

Scan the QR code found in the instruction manual or on the product packaging to directly download and install the "EarDance" app. You can also access it via this link: [EarDance App Download](#)

How to Download App

method 1



Scan the QR code on the instruction manual to download and install the "EarDance" app

method 2



You can also search for the keyword "EarDance" on major app stores to find the app and download and install it



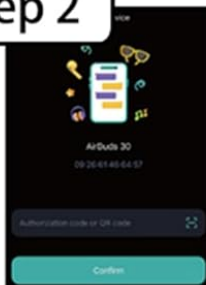
How to bind the App

Step 1

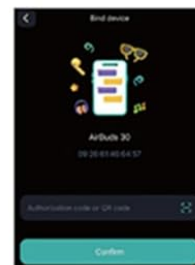


Open the Bluetooth page of your mobile phone and select M01 to complete the connection.

Step 2



1) Scan the Authorization code (QR Code)
1. Click the Scan Button
2. Scan the QR Code



2) Enter the Code Number
1. Enter the Number
2. Click the Confirm

Image: QR code for app download and a smartphone screen showing the "eyewear plus" app interface with "AI dialogue mode" and "Translation machine mode" options.

2. Method 2: Search App Stores

Search for "EarDance" on major app stores like Google Play Store or Apple App Store, then download and install the application.

3.3. Binding the App (Bluetooth Connection)

After installing the app, follow these steps to connect your glasses:

1. Step 1: Open Bluetooth Settings

Open the Bluetooth settings page on your mobile phone. Ensure Bluetooth is enabled.

How to Download App

method 1



Scan the QR code on the instruction manual to download and install the "EarDance" app

method 2

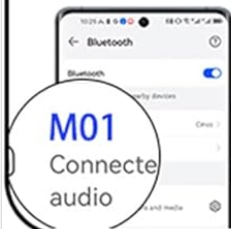


You can also search for the keyword "EarDance" on major app stores to find the app and download and install it



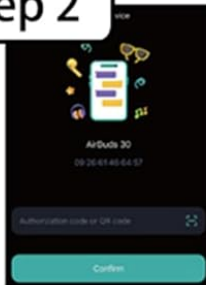
How to bind the App

Step 1



Open the Bluetooth page of your mobile phone and select M01 to complete the connection.

Step 2



XXXXXXX

1) Scan the Authorization code (QR Code)
1. Click the Scan Button
2. Scan the QR Code



XXXXXXX

2) Enter the Code Number
1. Enter the Number
2. Click the Confirm

Image: A smartphone screen showing Bluetooth settings with "M01" listed as a connectable audio device.

2. Step 2: Select M01 and Authorize

Select "M01" from the list of available Bluetooth devices to initiate the connection. You may be prompted to scan an authorization QR code or enter a code number to complete the binding process within the app.

How to Download App

method 1



Scan the QR code on the instruction manual to download and install the "EarDance" app

method 2

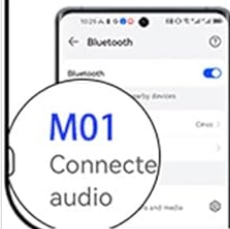


You can also search for the keyword "EarDance" on major app stores to find the app and download and install it



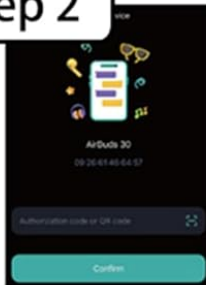
How to bind the App

Step 1



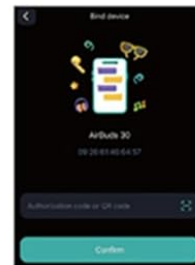
Open the Bluetooth page of your mobile phone and select M01 to complete the connection.

Step 2



XXXXXXX

1) Scan the Authorization code (QR Code)
1. Click the Scan Button
2. Scan the QR Code



XXXXXXX

2) Enter the Code Number
1. Enter the Number
2. Click the Confirm

Image: Smartphone screens showing options to scan an authorization QR code or enter a code number for app binding.

4. OPERATING INSTRUCTIONS

4.1. Basic Controls (Touch Keys)

The AI Smart Glasses feature multi-function touch keys on the temples for easy control of various functions. Refer to the table below for common operations:

IP67 dustproof and waterproof

Wear it without fear of the rainy season

Glasses through IP67 dustproof and waterproof side view, professional anti-splash including anti-water, Fear no sweat, rain, encounter unexpected situations, wear peace of mind.



Image: Close-up of the glasses temple showing touch key area and a table detailing touch gestures.

Action	Function
Take off your glasses	Disconnect Bluetooth
Click on the touch area (left or right) 1 time	Music pause/play, hang up call
Click on the touch area (left or right) 3 times	Wake up voice assistant
Double tap leg	Phone answer, music change (next track)
Long press the touch area (left or right)	Volume addition and subtraction
Press and hold the touch area for 2 seconds	Reject a call

4.2. AI Translation Features

The glasses support 164 languages for real-time translation, voice notes, and picture translation through the companion app. This allows for barrier-free communication in various scenarios.



164 languages
Automatically recognize



AI translation glasses
Real-time translation accuracy is up to 98%.

Image: A woman using the glasses with text indicating "164 languages Automatically recognize" and flags of various countries.



Image: Two people communicating with speech bubbles showing real-time translation, emphasizing "Face-to-Face Communication".

The AI translation feature allows for seamless communication. When speaking, your words are translated and played back through the glasses, and vice-versa for the other person's language. This is particularly useful for travel and business meetings.

4.3. AI Chat Mode (DeepSeek R1 & Gemini-2.5)

Engage with the integrated DeepSeek R1 and Gemini-2.5 AI systems for continuous, multi-scenario conversations. This feature provides a personalized communication experience, from navigation to meeting notes, directly through your glasses.

Bluetooth glasses

High-definition Audio for Music and Calls



Image: A person wearing the glasses with diagrams illustrating high-definition audio, noise-canceling microphone, and Bluetooth 5.3 technology.

The glasses connect via Bluetooth 5.3, offering stable and interference-resistant transmission for both iOS and Android devices.

5. MAINTENANCE AND CARE

5.1. Cleaning the Lenses and Frame

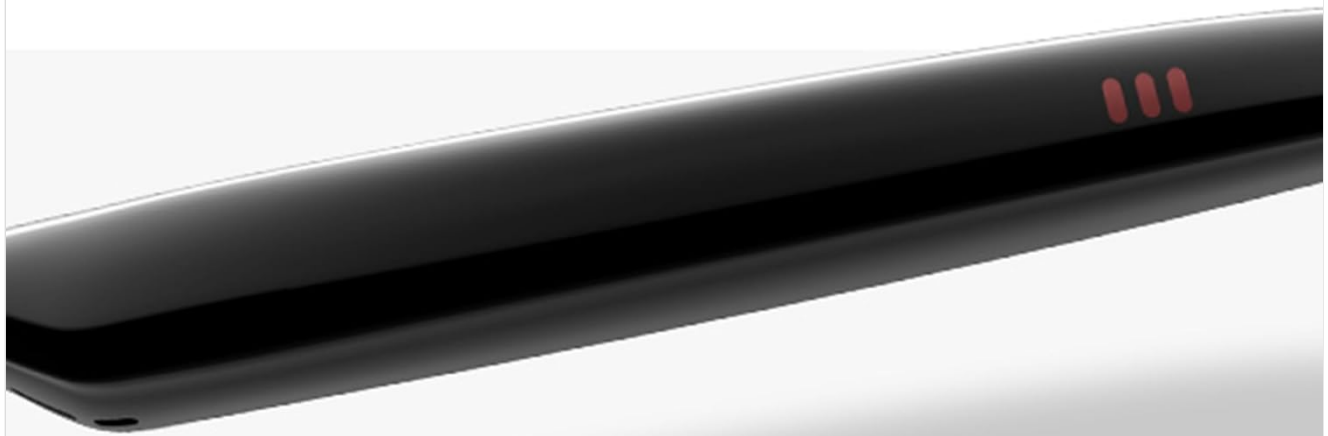
Use the provided cleaning cloth to gently wipe the lenses and frame. For stubborn smudges, slightly dampen the cloth with water or a lens-cleaning solution. Avoid using harsh chemicals or abrasive materials that could damage the lenses or coatings.

5.2. Water Resistance (IP67)

Your AI Smart Glasses are IP67 waterproof, meaning they are protected against dust and can withstand immersion in water up to 1 meter for up to 30 minutes. This makes them suitable for use in rainy conditions or during workouts where sweat is present. However, they are not designed for swimming or prolonged submersion.

Multi-function touch keys

Easily switch music, play or pause media, manage calls, wake up the voice assistant and more.



Take off your glasses
Disconnect Bluetooth

Click on the touch
area (left or right)3 times
Wake up voice assistant

Double tap leg
Phone answer, music change

Click on the touch
area (left or right)1 time
Music pause/play, hang up

Long press the touch
area (left or right)
Volume addition and subtraction

Press and hold the
touch area for 2 seconds
Reject a call

Image: Glasses with water droplets, illustrating their IP67 dustproof and waterproof capabilities.

5.3. Lens Replacement (Photochromic Lenses)

The glasses feature UV400 polarized photochromic lenses that change from clear indoors to dark outdoors. These lenses are designed for versatility and eye protection. If replacement lenses are needed, please contact customer support for compatible options.



Image: Diagram showing the glasses with interchangeable lenses and an illustration of lenses transitioning from clear to dark based on light conditions.

6. TROUBLESHOOTING

6.1. Connectivity Issues

- **Glasses not connecting to phone:** Ensure Bluetooth is enabled on your phone and the glasses are charged. Try restarting both devices.
- **App not recognizing glasses:** Verify the app is updated to the latest version. Re-attempt the binding process as described in Section 3.3.

6.2. Audio Problems

- **No sound or low volume:** Check the volume levels on both the glasses (long press touch area) and your connected phone. Ensure the glasses are properly positioned on your ears.
- **Poor call quality:** Ensure the microphones are not obstructed. Move closer to your phone if signal strength is an issue.

6.3. Translation Inaccuracies

- **Translation not accurate:** Ensure clear speech and minimal background noise. Speak at a moderate pace. Verify the correct source and target languages are selected in the app.
- **Picture translation issues:** Ensure good lighting and clear text in the image.

6.4. Lens Transition Issues

- **Lenses not changing color:** Ensure exposure to sufficient UV light (sunlight). The transition may take a few moments.

7. SPECIFICATIONS

Feature	Detail
Model Name	SMART GLASSES-M01
Brand	Generic
Item Model Number	M01
Package Dimensions	6.73 x 2.4 x 2.17 inches
Item Weight	5.6 ounces
Batteries	2 Nonstandard Battery batteries required (included)
Battery Capacity	180 Milliamp Hours
Operating System	Android, iOS
Connectivity Technology	Bluetooth
Wireless Communication Standard	Bluetooth
Special Feature	164 Language Real-Time Translation, AI chat Deepseek R1 & Gemini-2.5, Music Player, Phone Call
Waterproof Rating	IP67
Manufacturer	xunmirusu
Date First Available	May 11, 2025

8. WARRANTY AND SUPPORT

For warranty information and customer support, please refer to the documentation included with your purchase or contact the manufacturer directly. Keep your proof of purchase for warranty claims.

Manufacturer: xunmirusu

For further assistance, please visit the product page on Amazon or contact Amazon customer service.

