

Dylect DYDC34K

Dylect® Sense 4K Ultra 3 Channel Dash Cam User Manual

Model: DYDC34K

1. INTRODUCTION

Welcome to the Dylect® Sense 4K Ultra 3 Channel Dash Cam user manual. This document provides comprehensive instructions for the proper installation, operation, maintenance, and troubleshooting of your new dash camera system. Designed to capture every detail on the road and inside your vehicle, this system features 4K Ultra HD front recording, 1080p Full HD rear recording, and 1080p cabin recording, ensuring 360° coverage. Please read this manual thoroughly before using the device to ensure safe and optimal performance.

2. SAFETY INFORMATION

- **Installation:** Ensure the dash cam is installed in a location that does not obstruct the driver's view or interfere with the operation of airbags. Secure all cables to prevent interference with driving controls.
- **Power Supply:** Use only the provided car charger and Type-C USB cable. Using unauthorized power sources may damage the device and void the warranty.
- **Operating Temperature:** The device is designed to operate reliably in temperatures from -10°C to +60°C. Avoid exposing the device to extreme temperatures outside this range.
- **Cleaning:** Do not use chemical cleaners or solvents. Clean the lenses and device body with a soft, dry cloth.
- **Disassembly:** Do not attempt to disassemble, repair, or modify the device yourself. This will void the warranty and may cause damage or injury.
- **MicroSD Card:** Always use a Class 10, U3 Speed MicroSD memory card (not included) for optimal performance. Format the card regularly to maintain recording quality.

3. PACKAGE CONTENTS

Please verify that all items listed below are included in your package:

- 1N Front Cam with Cabin Cam
- 1N Rear Cam with Cable
- 1N Type-C USB Cable
- 1N Car Charger
- 4N Electrostatic Films
- 2N Extra Adhesive Sticker

- 5N Wire Clips
- 1N Pry Tool
- 4N Dry & Wet Wipes
- 1N Quick Start Guide

Smart **G-Sensor**

Automatically Locks Critical Footage

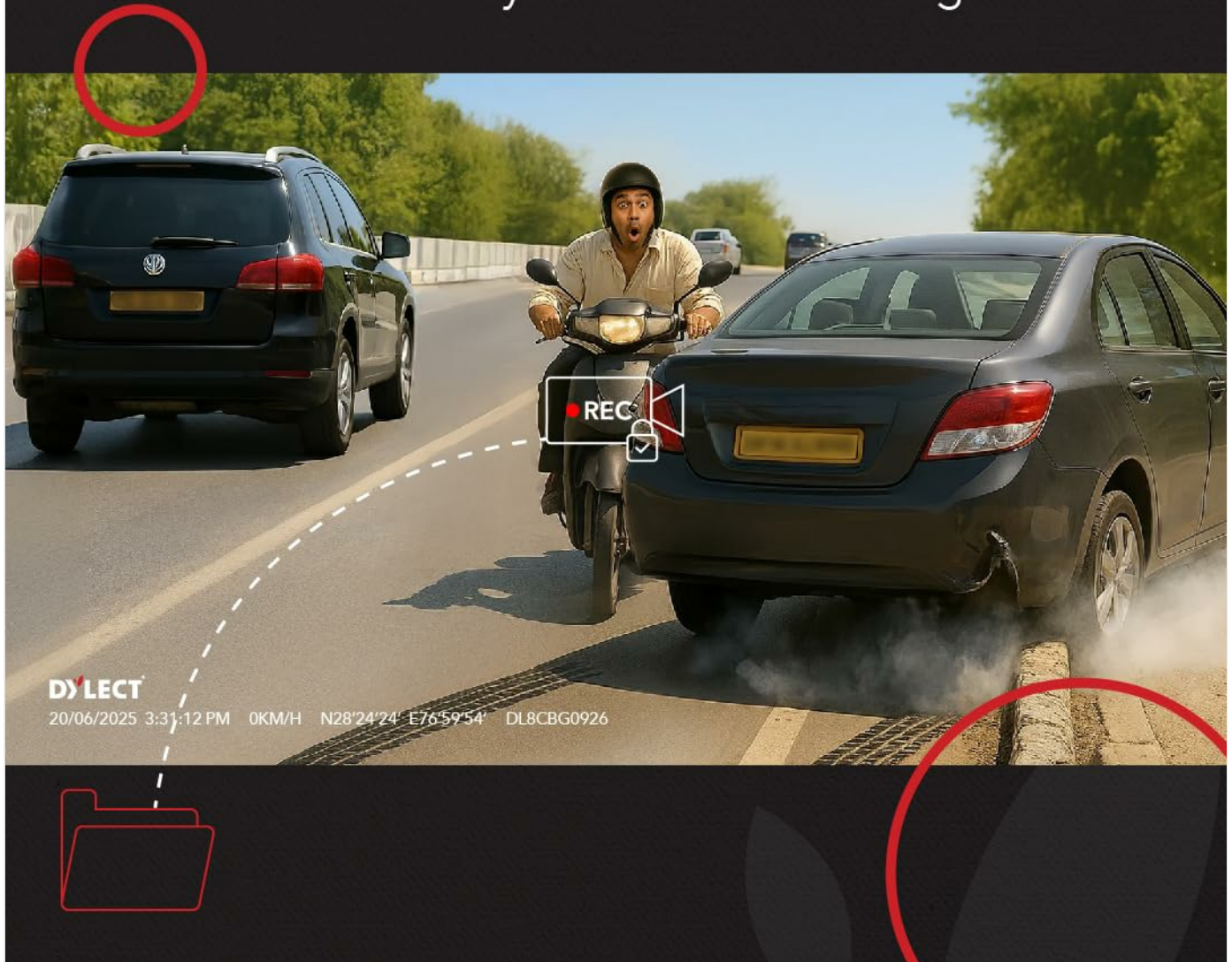


Image: All components included in the Dylect Sense 4K Ultra Dash Cam package, including the main unit, rear camera, cables, charger, and installation accessories.

4. **PRODUCT OVERVIEW**

The Dylect® Sense 4K Ultra Dash Cam system consists of a main front unit with an integrated cabin camera, and a separate rear camera. The main unit features a display for real-time viewing and settings adjustment.



Image: The main Dylect Sense 4K Ultra Dash Cam unit with its integrated cabin camera, alongside a smartphone displaying the companion app interface.

Main Unit (Front & Cabin Camera)

- **Front Lens:** Captures 4K Ultra HD footage of the road ahead.
- **Cabin Lens:** Records 1080p Full HD footage of the vehicle interior, equipped with infrared night vision.
- **2.4" IPS Display:** Provides live view, playback, and access to settings.
- **Control Buttons:** Navigate menus and control functions (MODE/BACK, MUTE, EMERGENCY/LCD OFF/CONFIRM, OK).
- **Microphone:** Built-in for synchronized audio recording.
- **Speaker:** For audio playback and alerts.
- **MicroSD Card Slot:** Supports up to 1TB Class 10, U3 Speed MicroSD cards.
- **GPS Module:** Integrated for tracking driving route, speed, and location.
- **Wi-Fi Module:** For app connectivity.



Image: The on-device display of the Dylect Sense 4K Ultra Dash Cam, illustrating indicators for recording status, Wi-Fi connectivity, time and date, and real-time alerts.

Rear Camera

- **Rear Lens:** Captures 1080p Full HD footage of the rear view.
- **Connection Port:** Connects to the main unit via the provided cable.

5. SETUP

5.1 MicroSD Card Insertion

1. Ensure the dash cam is powered off.
2. Locate the MicroSD card slot on the main unit.
3. Insert a Class 10, U3 Speed MicroSD card (up to 1TB, not included) with the gold contacts facing the back of the dash cam until it clicks into place.
4. It is recommended to format the MicroSD card within the dash cam settings upon first use and periodically thereafter.

5.2 Dash Cam Installation

1. **Choose a Location:** Select a spot on your windshield, typically behind the rearview mirror, that does not obstruct your view or interfere with airbags.
2. **Clean Surface:** Use the provided dry & wet wipes to clean the chosen area on the windshield.
3. **Apply Electrostatic Film:** Apply one of the electrostatic films to the cleaned area. This helps in easy removal and prevents adhesive residue on your windshield.
4. **Attach Main Unit:** Peel the protective film from the adhesive sticker on the dash cam mount. Firmly press the dash cam onto the electrostatic film for at least 30 seconds.

5. **Install Rear Camera:** Mount the rear camera on your rear windshield using its adhesive mount. Route the rear camera cable neatly along the vehicle's headliner and A-pillar to the main unit.
6. **Connect Power:** Connect the Type-C USB cable to the main unit and the other end to the provided car charger. Plug the car charger into your vehicle's 12V power outlet.
7. **Cable Management:** Use the provided wire clips and cable ties to secure all cables neatly along the edges of your windshield and dashboard, ensuring they do not interfere with driving. The pry tool can assist in tucking cables under trim.

5.3 Initial Power On & Basic Settings

1. Once connected to power, the dash cam will automatically power on and begin recording when your vehicle starts.
2. Use the control buttons to navigate the menu. Press the **MODE/BACK** button to switch between recording modes (Front+Cabin+Rear, Front+Cabin, Front only) or to go back in menus.
3. Press the **OK** button to confirm selections.
4. Access system settings to set date/time, video resolution, loop recording duration, G-sensor sensitivity, and other preferences.

5.4 Wi-Fi & App Connectivity

The Dylect App allows you to view live footage, download recordings, and adjust settings directly from your smartphone.

1. Download the "Dylect App" from the Google Play Store (for Android) or Apple App Store (for iOS).
2. On the dash cam, enable Wi-Fi (usually by pressing and holding a specific button or navigating through settings). The Wi-Fi SSID and password will be displayed on the dash cam screen.
3. On your smartphone, go to Wi-Fi settings and connect to the dash cam's Wi-Fi network.
4. Open the Dylect App. You should now be able to access live footage, review recorded videos, and modify settings.



Image: Comparison showing the superior clarity of footage captured by the Dylect Sense 4K Ultra Dash Cam in low light, attributed to its Sony STARVIS 2 sensor, compared to standard night vision.

5.5 Built-in GPS

The built-in GPS module automatically tracks your driving route, speed, and location, providing reliable evidence for incidents. GPS data is embedded in the video files and can be viewed via the Dylect App or compatible PC player software.



Image: The Dylect Sense 4K Ultra Dash Cam highlighting its built-in GPS functionality for location tracking and seamless route logging, with a smartphone displaying a map interface.

6. OPERATING THE DASH CAM

6.1 Loop Recording

The dash cam continuously records video in segments (e.g., 1, 3, or 5 minutes). When the MicroSD card is full, the oldest unlocked video files are automatically overwritten by new recordings. This ensures uninterrupted recording.

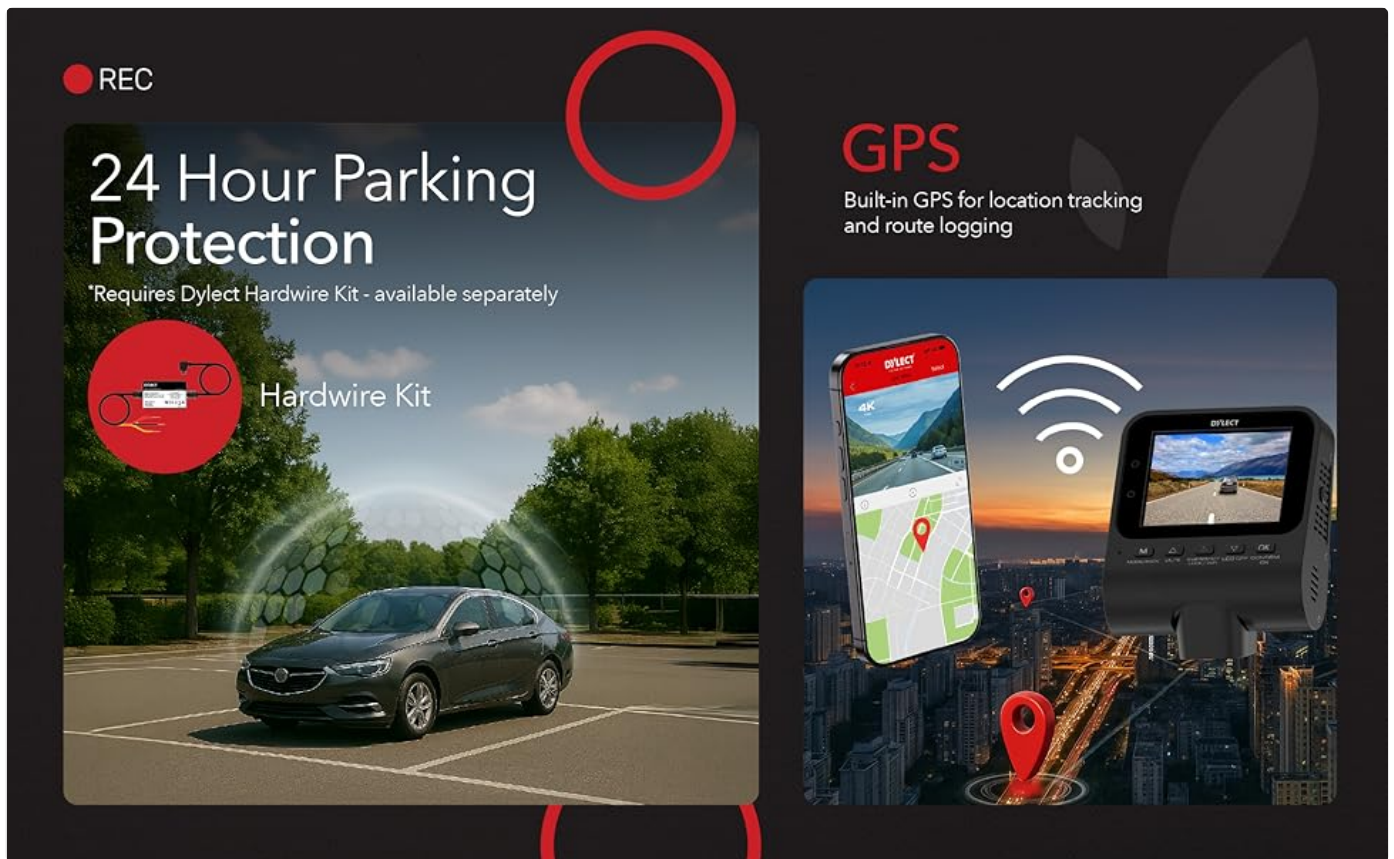


Image: Illustration of the Dylect Sense 4K Ultra Dash Cam's triple recording capability, showing 4K front, 1080p cabin, and 1080p rear camera views with wide-angle lenses.

6.2 Emergency Recording (G-Sensor)

The built-in G-sensor detects sudden impacts or collisions. When triggered, the current video segment (typically 1 minute) is automatically locked and saved to a protected folder on the MicroSD card, preventing it from being overwritten by loop recording. The sensitivity of the G-sensor can be adjusted in the settings.

Smartphone Connectivity

The Dylect App



Access Real-Time
Footage



Adjust
Settings



Review
Recorded Videos

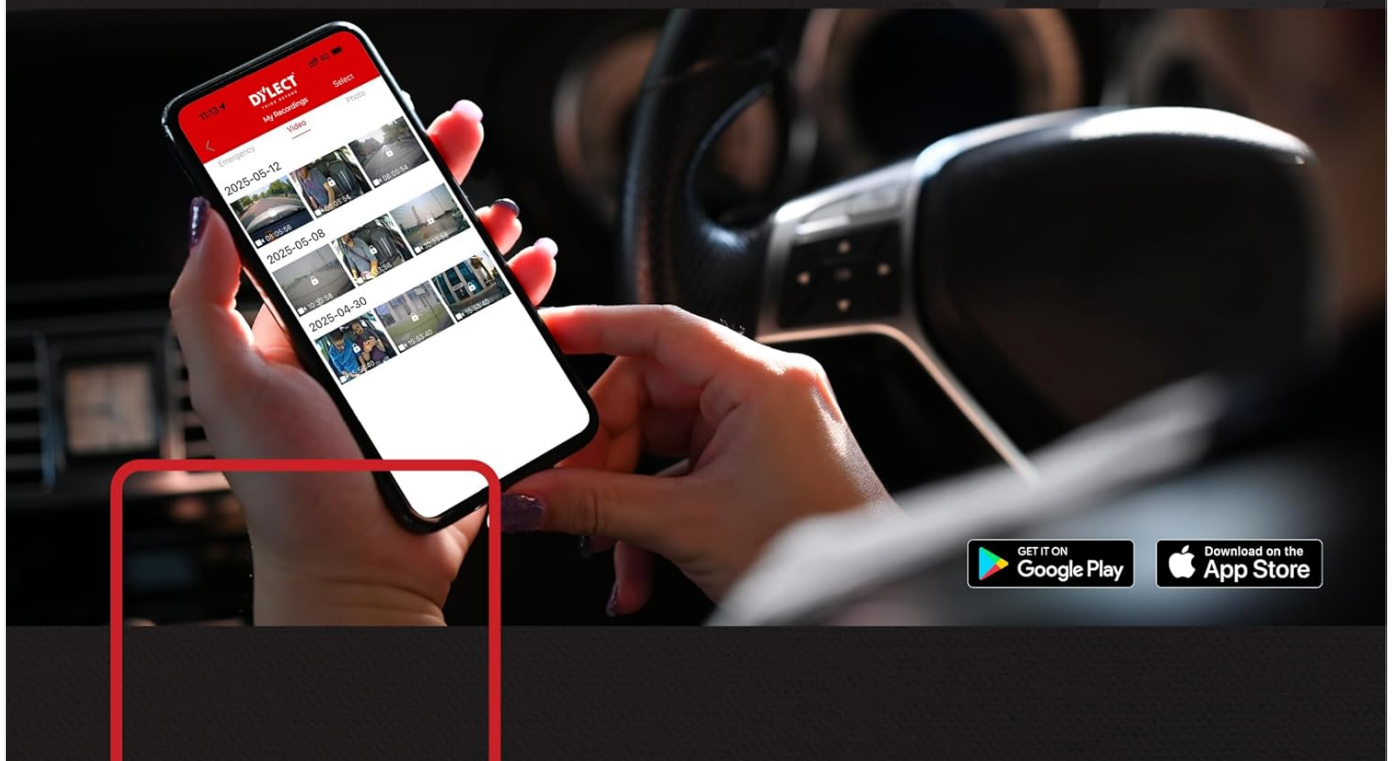


Image: A visual representation of the Smart G-Sensor feature, showing the dash cam automatically locking critical footage when a sudden impact or event is detected.

6.3 Parking Monitoring (Optional)

For 24-hour parking protection, the dash cam requires a separate Dylect Hardwire Kit (not included). When installed, the dash cam can monitor your vehicle for impacts or motion while parked, recording events even when the engine is off.

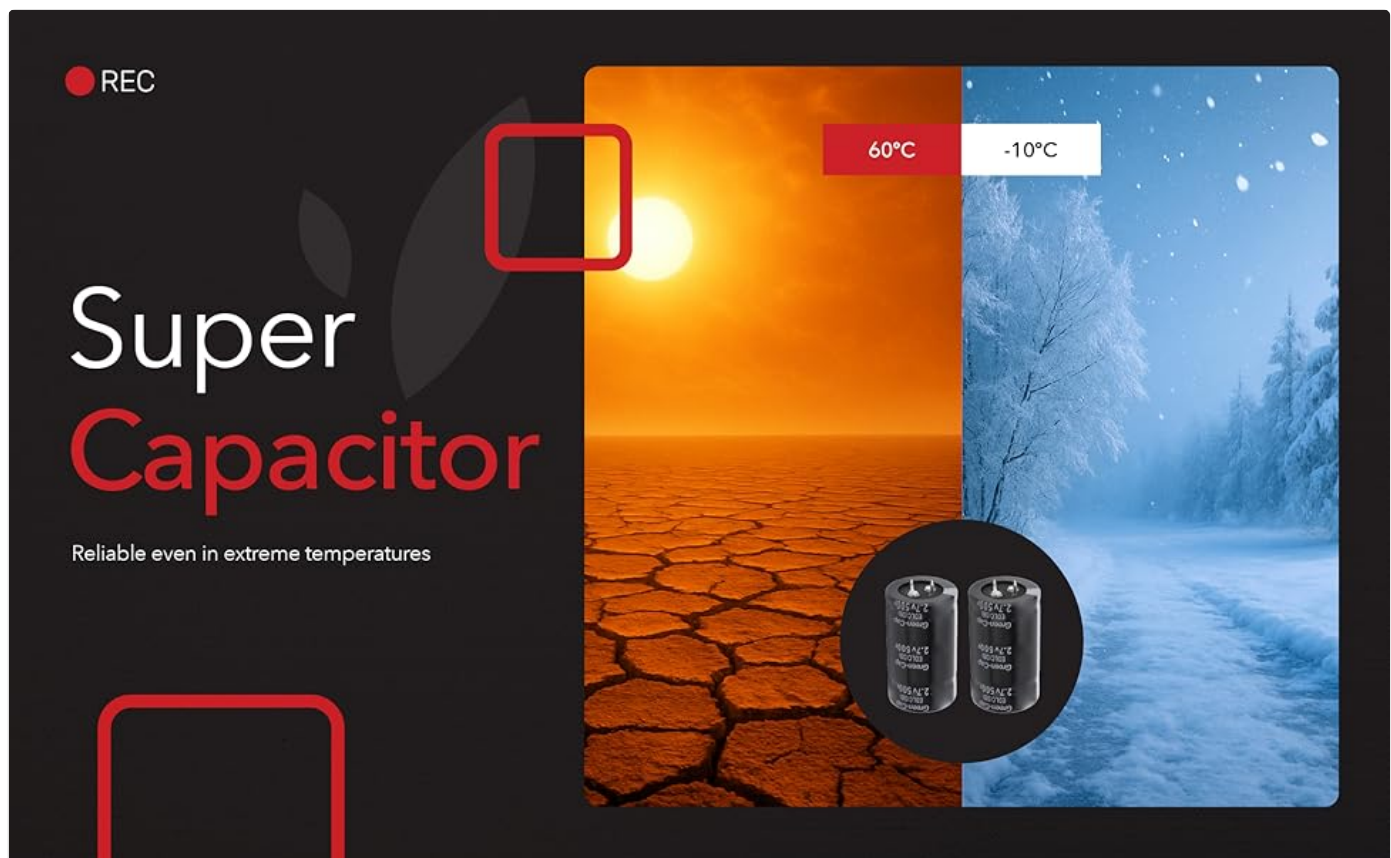


Image: An illustration depicting the 24-hour parking protection feature, noting that it requires the Dylect Hardwire Kit, sold separately.

6.4 Infrared Night Vision (Cabin Camera)

The cabin camera is equipped with infrared LEDs, allowing it to record clear footage of the vehicle's interior even in complete darkness. This feature is particularly useful for ride-sharing drivers or for added security.

7. MAINTENANCE

7.1 Cleaning the Device

- Ensure the dash cam is powered off and disconnected from power before cleaning.
- Use a soft, dry, lint-free cloth to wipe the main unit and lenses.
- For stubborn smudges on lenses, slightly dampen the cloth with water, then wipe gently and dry immediately. Do not use abrasive cleaners or solvents.

7.2 MicroSD Card Management

- **Formatting:** Regularly format your MicroSD card (e.g., once a month) within the dash cam's settings. This helps maintain optimal recording performance and prevents data corruption.
- **Card Lifespan:** MicroSD cards have a limited lifespan due to continuous overwriting. If you notice recording errors or degraded performance, consider replacing the MicroSD card.
- **Data Backup:** Periodically back up important video files to a computer or cloud storage before formatting the card.

8. TROUBLESHOOTING

Problem	Possible Cause / Solution
---------	---------------------------

Problem	Possible Cause / Solution
Dash cam does not power on.	Ensure the car charger is properly plugged into the vehicle's 12V outlet and the Type-C cable is securely connected to the dash cam. Check if the vehicle's 12V outlet is receiving power (e.g., by testing with another device). Try a different car charger or Type-C cable if available.
Recording stops or freezes.	Ensure you are using a Class 10, U3 Speed MicroSD card. Lower speed cards may not support 4K recording. Format the MicroSD card within the dash cam settings. The MicroSD card may be full or corrupted. Replace the card if formatting does not resolve the issue. Check for firmware updates.
Wi-Fi connection issues.	Ensure Wi-Fi is enabled on the dash cam. Make sure your smartphone is within close proximity to the dash cam. Restart both the dash cam and your smartphone. Re-enter the Wi-Fi password carefully.
GPS not tracking location.	Ensure the dash cam has a clear view of the sky (not obstructed by metallic tinting or other objects). It may take a few minutes for the GPS to acquire a signal, especially after initial setup or if the device has been off for a long time.
Video quality is poor.	Ensure the protective film has been removed from the lenses. Clean the lenses with a soft, dry cloth. Check video resolution settings; ensure it is set to 4K for the front camera. Ensure the windshield is clean where the camera is mounted.

9. SPECIFICATIONS

Feature	Detail
Model	Dylect® Dash Cam Sense 4K Ultra (DYDC34K)
Front Camera Resolution	4K Ultra HD
Rear Camera Resolution	1080p Full HD
Cabin Camera Resolution	1080p Full HD (with Infrared Night Vision)
Image Sensor	Sony STARVIS 2 Sensor with WDR
Display	2.4" IPS Screen
Wide Angle	140° (Front)
Storage	Supports Class 10, U3 Speed MicroSD cards up to 1TB (not included)

Feature	Detail
Features	Loop Recording, G-Sensor, Built-in GPS, Wi-Fi, App Connectivity, Built-in Mic
Power Source	Dual USB Car Charger (included)
Operating Temperature	-10°C to +60°C
Product Dimensions	10.4 x 8 x 4.8 cm
Item Weight	120 g
Country of Origin	India

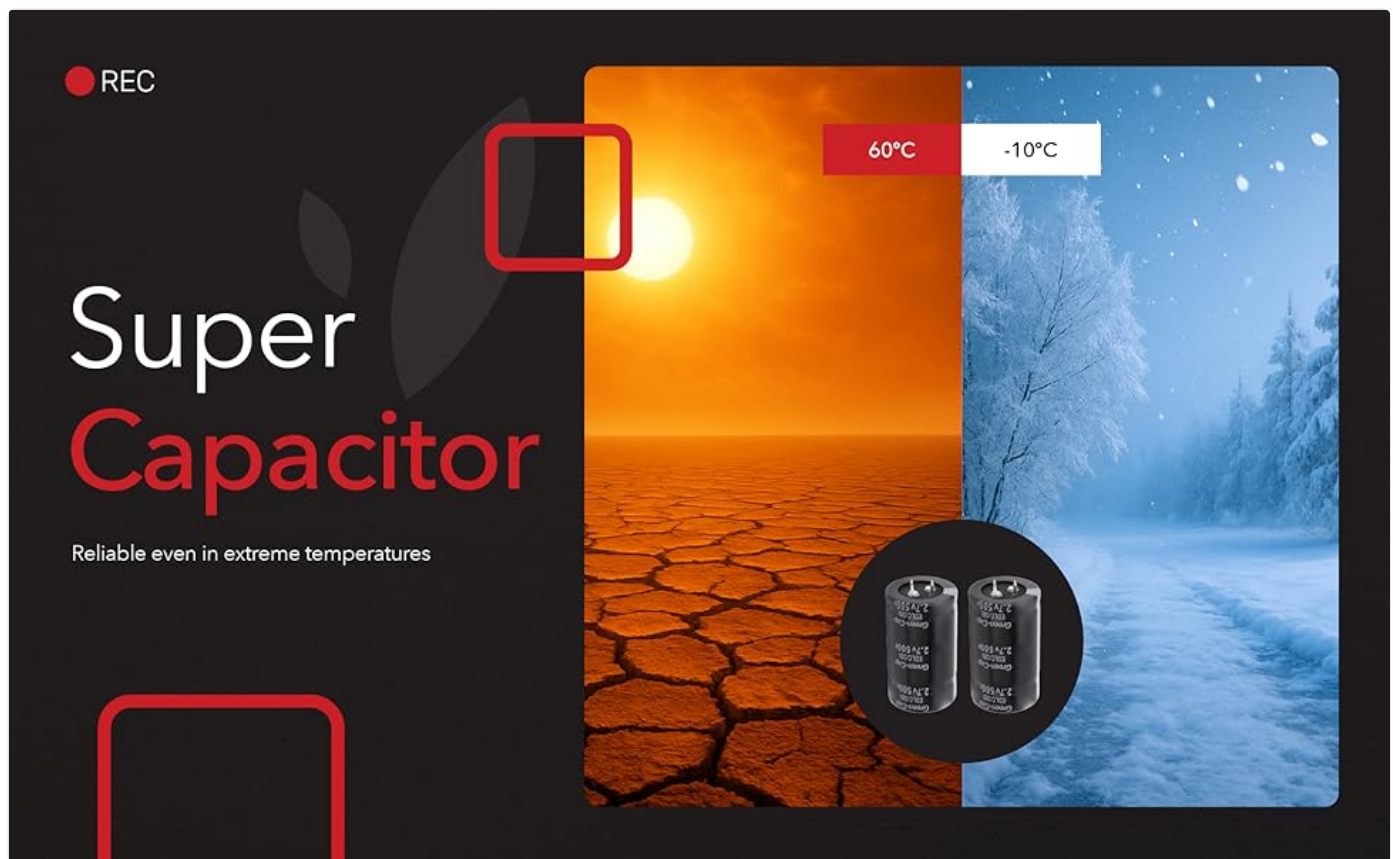


Image: Illustration highlighting the Super Capacitor feature, ensuring the dash cam's reliability across extreme temperatures from -10°C to +60°C.

10. WARRANTY AND SUPPORT

Your Dylect® Sense 4K Ultra 3 Channel Dash Cam comes with a standard **1-year warranty**. Additionally, you can receive a **3-month extension** on your warranty by registering your product within 10 days of purchase. Please refer to the Quick Start Guide or the Dylect website for registration details.

For technical support, warranty claims, or any inquiries, please contact Dylect customer service:

- **Phone:** +91 8669393000
- **Email:** care@dylect.in
- **Manufacturer:** Value - One Retail Private Limited
- **Address:** PLOT #35, HSIIDC, SEC-3, IMT MANESAR, GURUGRAM - 122050, HARYANA, India

