



[Manuals.plus](#) /

> [MEIKEE](#) /

> [MEIKEE 20W Outdoor PIR Sensor Floodlight \(Model FLB020\) Instruction Manual](#)

MEIKEE FLB020

MEIKEE 20W Outdoor PIR Sensor Floodlight (Model FLB020) Instruction Manual

Model: FLB020

Introduction	Safety Information	Product Overview	Specifications	Setup & Installation
Operating Instructions	Applications	Maintenance	Troubleshooting	Warranty & Support

1. INTRODUCTION

Thank you for purchasing the MEIKEE 20W Outdoor PIR Sensor Floodlight. This manual provides essential information for the safe and efficient use of your new lighting fixture. Please read these instructions carefully before installation and operation, and retain them for future reference.

This floodlight is designed for outdoor use, featuring a motion sensor for enhanced security and convenience. Its robust construction ensures reliable performance in various weather conditions.

MEIKEE 改良版 20w センサーライト 人感 LEDフラッドライト PIR屋外センサー投光器



Image: MEIKEE 20W Outdoor PIR Sensor Floodlight providing illumination for two houses at night.

2. SAFETY INFORMATION

- **Electrical Safety:** Always disconnect power before installation, maintenance, or repair. Installation should be performed by a qualified electrician in accordance with local electrical codes.
- **Grounding:** Ensure the fixture is properly grounded to prevent electric shock.
- **Voltage:** Verify that the supply voltage matches the fixture's requirements (90-120VAC).
- **Mounting:** Mount the fixture securely on a stable surface. Do not install on unstable or vibrating structures.
- **Heat:** The LED light source generates heat. Do not cover the fixture or install it in enclosed spaces without adequate ventilation.
- **Eye Protection:** Do not stare directly into the light source when it is illuminated, as it may cause eye strain or damage.
- **Water Exposure:** While the fixture is IP66 waterproof, ensure all connections are sealed and protected from direct water spray or submersion.
- **Children and Pets:** Keep the product out of reach of children and pets.

3. PRODUCT OVERVIEW

The MEIKEE 20W Outdoor PIR Sensor Floodlight is a high-performance, energy-efficient lighting solution designed for various outdoor applications. It features a sensitive PIR motion sensor, adjustable settings, and a durable, waterproof design.

Key Features:

- **High Brightness:** 20W LED providing 2000-2200 Lumens of daylight white (6500K) illumination.
- **PIR Motion Sensor:** Detects human and animal movement up to 12 meters with a 180° sensing angle.
- **Adjustable Settings:** Customizable lighting duration (10s/45s/120s/600s) and day/night operation modes.
- **Durable & Waterproof:** IP66 rated for protection against dust and powerful water jets, suitable for harsh weather.

- **Energy Efficient:** Designed for 80% energy savings compared to traditional lighting.
- **Eco-Friendly:** Contains no mercury or lead, and emits no UV or infrared radiation.
- **Flexible Installation:** Sensor head can be rotated 360° horizontally and 180° vertically for optimal coverage.

Product Components:



Image: Front view of the MEIKEE 20W Outdoor PIR Sensor Floodlight.

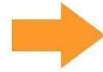
改良版： 真空処理採用して、寒い日、湿気が多いなどの極端な環境下で長時間点灯しても水滴は出ません。ledランプをよく保護します。



Image: Rear view of the MEIKEE 20W Outdoor PIR Sensor Floodlight, highlighting the heat dissipation design. The floodlight features a robust housing, an integrated LED panel, and a PIR motion sensor. The sensor unit is adjustable to optimize detection coverage. The power cord is 1.5 meters long for flexible connection.

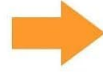
MEIKEE 2021年改良版

改良点①： 3Pプラグ → 2Pプラグ



改良点②： 防水性を向上させます

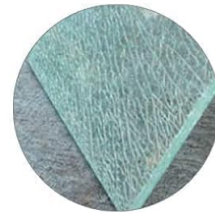
従来の防水性能においては、四隅でネジを締めます。



防水コネクタ型



防水処理



飛散防止フッ素フィルム

Image: MEIKEE 2021 improved version, featuring a 2-pin plug and enhanced waterproofing for durability.

4. SPECIFICATIONS

Brand	MEIKEE
Model Number	FLB020
Wattage	20 W
Luminous Flux	2000 - 2200 Lumens
Color Temperature	6500K (Daylight White)
Light Source Type	LED (SMD)
CRI	>75
Beam Angle	120°
Sensing Angle	180°
Sensing Distance	Up to 12 meters

Optimal Illumination Range	6m x 6m
Input Voltage	90-120VAC
Waterproof Rating	IP66
Product Dimensions	15 cm (L) x 4 cm (W) x 15 cm (H)
Cable Length	1.5 meters
Mounting Type	Wall Mount
Included Components	Screws
Color	Black

5. SETUP & INSTALLATION

Before beginning installation, ensure the power supply is turned off at the circuit breaker to prevent electric shock. It is recommended to have installation performed by a qualified electrician.

5.1 Choosing a Location:

- Select a sturdy wall or surface capable of supporting the fixture's weight.
- Ensure the location allows for optimal sensor detection and light coverage. Avoid placing near heat sources or objects that might cause false triggers (e.g., swaying trees, air conditioners).
- The fixture is IP66 rated, making it suitable for outdoor areas exposed to rain, such as gardens, entrances, parking lots, and corridors.



IP66防水対応

さまざまな厳しい天候に耐える

Image: The floodlight operating effectively during rain, showcasing its IP66 waterproof design.

5.2 Mounting the Fixture:

1. Mark the desired mounting points on the wall using the fixture's bracket as a template.
2. Drill pilot holes at the marked locations.
3. Secure the mounting bracket to the wall using the provided screws or appropriate hardware for your surface type.
4. Attach the floodlight fixture to the mounted bracket.

5.3 Electrical Connection:

- Connect the power cord to your electrical supply. Ensure proper wiring (Live, Neutral, Ground) according to local regulations.
- The power cord is 1.5 meters long. If an extension is needed, use an outdoor-rated, waterproof extension cord and ensure all connections are sealed.

6. OPERATING INSTRUCTIONS

The MEIKEE sensor floodlight features adjustable settings for lighting duration and operating mode (day/night). These settings are controlled via switches on the sensor unit.

6.1 Adjusting Lighting Duration:

The lighting duration can be set to one of four options: 10 seconds, 45 seconds, 120 seconds, or 600 seconds. Use the switch labeled with time intervals on the sensor unit to select your desired duration.

6.2 Selecting Day/Night Mode:

The floodlight offers two operating modes:

- **Sun Mode (24-hour operation):** The light will activate whenever motion is detected, regardless of ambient light conditions (day or night).
- **Moon Mode (Night-only operation):** The light will only activate when motion is detected during nighttime or in low-light conditions.

Use the switch labeled with sun/moon icons on the sensor unit to select the desired mode.

ソーラーライトの約 **10倍** の明るさ

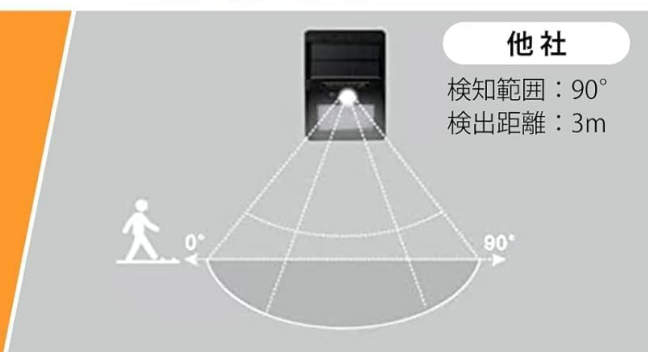
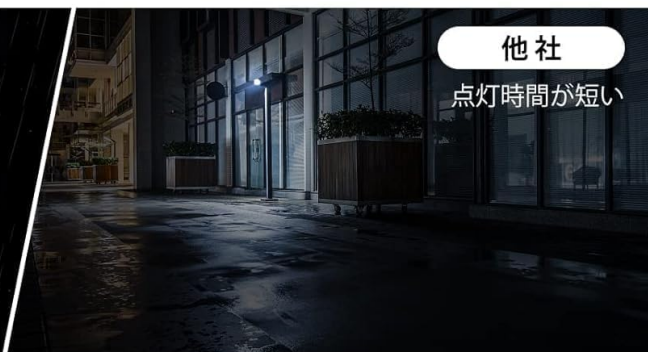
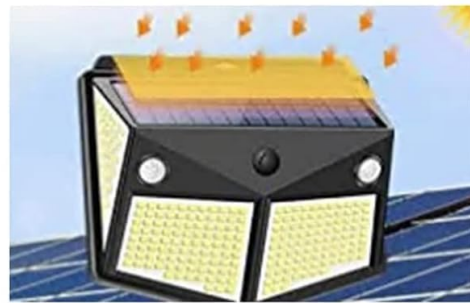


Image: Sensor adjustment controls for lighting duration and day/night operation modes.

6.3 Adjusting Sensor Angle:

The PIR sensor head can be manually adjusted to optimize its detection area. It can be rotated 360° horizontally and 180° vertically. Point the sensor towards the area where motion detection is desired.

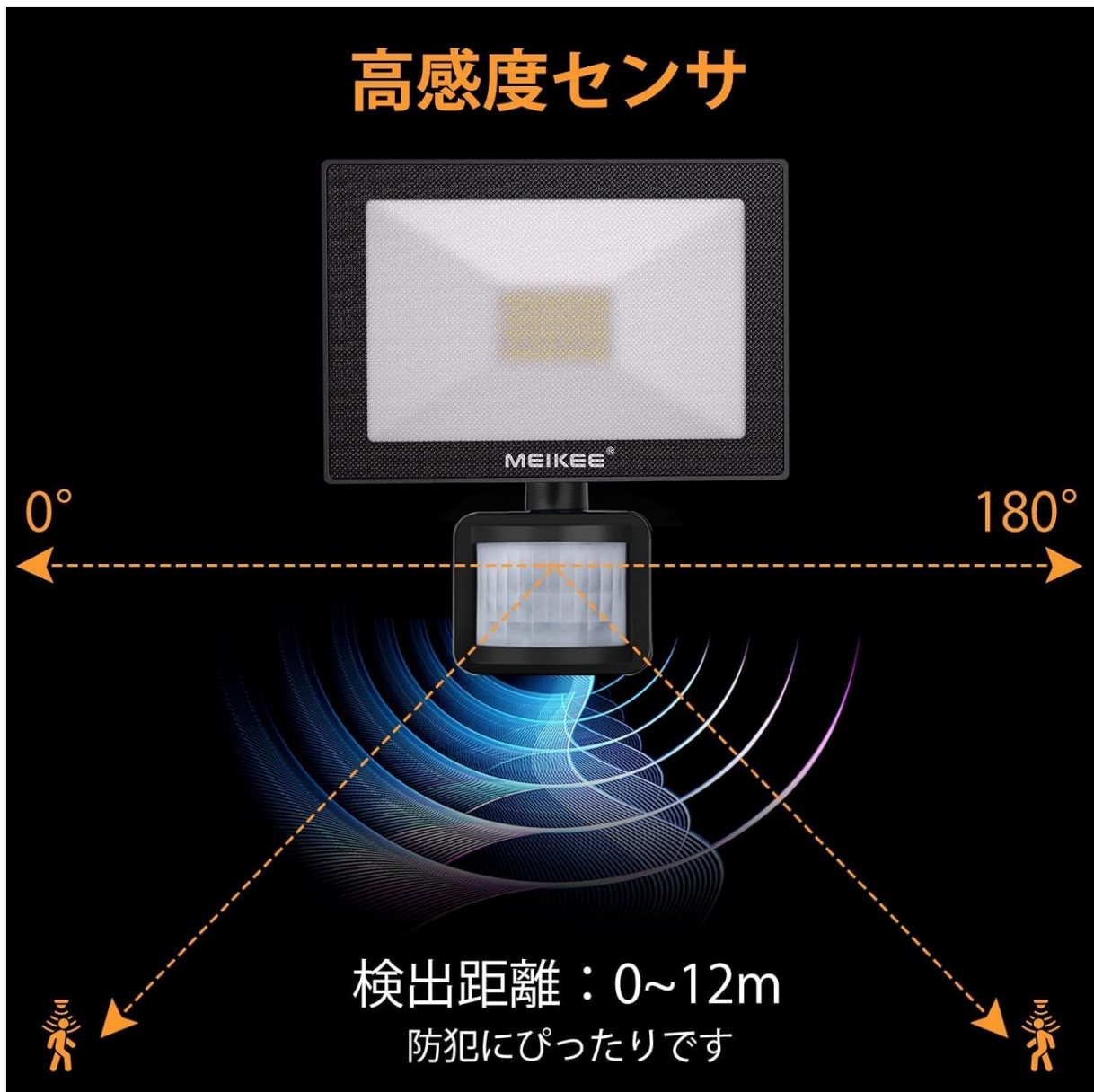


Image: High-sensitivity sensor with 180-degree detection angle and up to 12-meter range.

7. APPLICATIONS

The MEIKEE 20W Outdoor PIR Sensor Floodlight is versatile and suitable for a wide range of outdoor lighting needs, including:

- **Security Lighting:** Deter intruders with automatic illumination in areas like yards, driveways, and building perimeters.
- **Parking Lots:** Provide bright, motion-activated lighting for safety and convenience in residential or small commercial parking areas.
- **Entrances & Pathways:** Illuminate doorways, gates, and walkways for safe navigation at night.
- **Warehouses & Storage Areas:** Offer temporary lighting in outdoor storage spaces or loading docks.
- **Gardens & Home Gardens:** Enhance visibility and security in garden spaces.
- **Corridors & Alleys:** Light up dark passages for improved safety.



Image: Various application scenarios for the MEIKEE floodlight, including security, parking, and entrance lighting.

8. MAINTENANCE

Regular maintenance ensures optimal performance and longevity of your MEIKEE floodlight.

- **Cleaning:** Periodically clean the light fixture and sensor lens with a soft, damp cloth. Do not use abrasive cleaners or solvents.
- **Inspection:** Regularly inspect the power cord and connections for any signs of damage or wear. Ensure the mounting is secure.
- **Sensor Area:** Keep the area around the sensor clear of obstructions (e.g., overgrown plants, debris) that might interfere with detection or cause false triggers.
- **No User-Serviceable Parts:** The LED light source is integrated and not user-replaceable. Do not attempt to open or repair the fixture yourself.

9. TROUBLESHOOTING

Problem	Possible Cause & Solution
---------	---------------------------

<p>Light does not turn on.</p>	<ul style="list-style-type: none"> ◦ No power: Check power supply, circuit breaker, and electrical connections. ◦ Incorrect mode: If in Moon Mode, ensure it is dark enough. Switch to Sun Mode for 24-hour operation to test. ◦ Sensor blocked: Ensure the sensor lens is clean and unobstructed. ◦ Sensor angle: Adjust the sensor angle to cover the desired detection area.
<p>Light stays on continuously.</p>	<ul style="list-style-type: none"> ◦ Continuous motion: Ensure there is no constant motion within the sensor's detection range. ◦ Sensor malfunction: If the problem persists, contact customer support.
<p>Light flashes or flickers.</p>	<ul style="list-style-type: none"> ◦ Unstable power: Check electrical connections and power supply stability. ◦ Faulty unit: If the problem persists, contact customer support.
<p>Sensor is too sensitive or not sensitive enough.</p>	<ul style="list-style-type: none"> ◦ Sensor angle: Adjust the sensor head's angle and direction. ◦ Environmental factors: Strong ground reflection, swaying trees, or nearby air conditioners can affect sensor performance. Try repositioning the light or clearing obstructions.

10. WARRANTY & SUPPORT

10.1 Warranty Information:

MEIKEE provides a **2-year warranty** for this product from the date of purchase. This warranty covers defects in materials and workmanship under normal use. It does not cover damage caused by improper installation, misuse, accidents, or unauthorized repairs.

10.2 Customer Support:

If you encounter any issues or have questions regarding your MEIKEE 20W Outdoor PIR Sensor Floodlight, please contact our customer support team. To expedite your request, please provide your order number and a detailed description of the issue.

You can typically reach us through your purchase platform:

- Go to "**Account Service**"
- Select "**Order History**"
- Find your order from "**Seller: MEIKEE-JP**"
- Click on "**Ask a Question**"

We are committed to providing excellent service and support for our products.

