



Manuals.plus /

- › CHLORWORKS /
- › CHLORWORKS Variable Speed Inground Pool Pump 2.0 HP Instruction Manual

CHLORWORKS CHPVS2020P

CHLORWORKS Variable Speed Inground Pool Pump 2.0 HP Instruction Manual

MODEL: CHPVS2020P

Introduction

This manual provides essential information for the safe and efficient installation, operation, and maintenance of your CHLORWORKS Variable Speed Inground Pool Pump 2.0 HP. Please read all instructions carefully before installation and use. Retain this manual for future reference.



Figure 1: CHLORWORKS Variable Speed Inground Pool Pump 2.0 HP with included accessories.

Important Safety Information

Always follow basic safety precautions to reduce the risk of fire, electric shock, and injury to persons, including the following:

- Disconnect power before servicing.
- Installation must be performed by a qualified professional and comply with all local and national electrical and plumbing codes.
- Ensure the pump is properly grounded.
- Do not operate the pump if it is damaged.
- Keep children away from the pump and pool equipment area.

Setup

Unpacking and Inspection

Carefully remove all components from the packaging. Verify that all included items are present:

- CHLORWORKS Variable Speed Pool Pump
- 1.5" Unions (2)

- 2" Unions (2)
- O-rings (4)
- Instruction Manual

Placement

Position the pump on a solid, level surface. It is recommended to place the pump in a shaded area to protect it from direct sunlight and prolong its lifespan.

Electrical Connection

This pump operates on 220-240V AC power. Ensure your electrical supply matches the pump's requirements. Wiring should be performed by a licensed electrician.

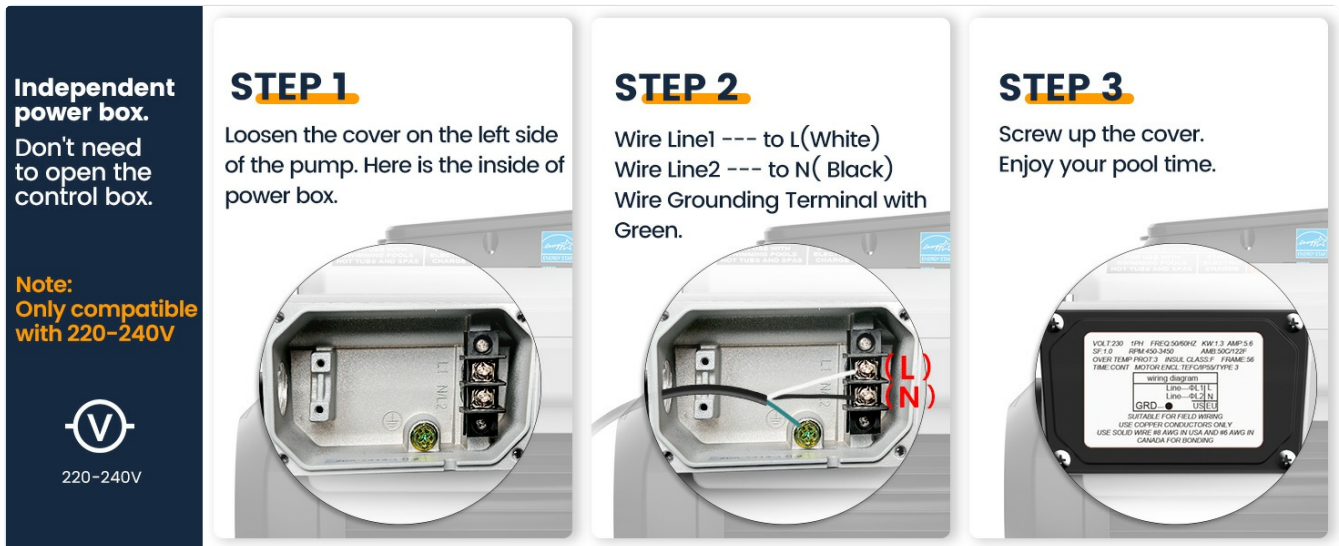


Figure 2: Wiring instructions for the independent power box. Connect Wire Line1 to L (White), Wire Line2 to N (Black), and Wire Grounding Terminal with Green. Note: Only compatible with 220-240V.

Plumbing Connections

Connect the pump to your pool's plumbing system using the appropriate 1.5" or 2" unions provided. Ensure all connections are tight and leak-free. The pump is designed for inground pools.

Priming the Pump

Before starting the pump for the first time, ensure the pump housing is filled with water. This prevents dry running and potential damage to the pump. Open the filter basket lid, fill with water, and secure the lid tightly.

Operating Instructions

Control Panel Overview

The pump features a digital control panel for easy operation. It includes a digital display, speed buttons (1-4), and controls for setting time and duration.



Figure 3: Digital Control Panel. Displays current speed, time, duration, and watts. Features four speed settings and a temporary override mode.

Setting Time and Schedule

The pump allows you to customize running times and speeds. Use the digital control panel to set the current time and program up to four different speeds with specific durations. This ensures energy efficiency by adjusting motor speed to your pool's needs.

Your browser does not support the video tag.

Video 1: Official CHLORWORKS 'How to Program' guide for the variable speed pool pump. This video demonstrates setting up the pump's operational schedule and speeds.

For general guidance on variable speed pump operation and programming, you may also refer to the following videos:

- Your browser does not support the video tag.
Video 2: '3HP Variable Speed Pool Pump Operation Instruction' by CIPU POOL PRODUCTS. Provides general operational insights for variable speed pumps.
- Your browser does not support the video tag.
Video 3: 'Variable Speed Pool Pump' by Varpoolfaye-US. A short overview of variable speed pump features.
- Your browser does not support the video tag.
Video 4: '2.5HP Pool Pump' by VARMINPOOL. Demonstrates aspects of pool pump installation and operation.
- Your browser does not support the video tag.
Video 5: 'LINGXIAO above ground pool pump - Energy-saving star' by LINGXIAO PUMP. Offers insights into energy-efficient pump operation.

Quick Clean Mode

The Quick Clean feature allows the pump to temporarily run at a higher speed for intensive cleaning cycles. This mode can be engaged as needed and the pump will return to its programmed schedule after completion.

Freeze Protection Function

The pump includes a freeze protection function. When the sensor detects temperatures near freezing, the pump activates to prevent water from freezing in the pipelines. This function is off by default and must be enabled manually via the control panel settings.

Maintenance

Filter Basket Cleaning

Regularly inspect and clean the filter basket to maintain optimal pump performance. A clogged basket can reduce flow rate and strain the pump motor.



Figure 4: Filter Basket Features. Highlights sleek design, balanced vents for efficient filtration, easy removal for cleaning, and O-rings to prevent leaks.

1. Turn off the pump and disconnect power.
2. Open the transparent lid of the filter basket.
3. Remove the basket and empty any debris.
4. Rinse the basket thoroughly with water.
5. Place the clean basket back into the pump housing.
6. Ensure the O-ring is properly seated and secure the lid tightly.
7. Reconnect power and prime the pump if necessary.

Motor Care

The pump is equipped with a TEFC (Totally Enclosed Fan Cooled) motor designed for quiet and cooler operation, extending its lifespan. Ensure the motor's cooling fan is free from obstructions.

TEFC MOTOR

Quieter & Cooler Operation

Extend Pump Life



Figure 5: TEFC Motor Design. Engineered for quieter and cooler operation to extend the pump's service life.

Winterization

In regions with freezing temperatures, proper winterization is crucial. Drain all water from the pump and plumbing lines to prevent freeze damage. Store the pump in a dry, protected area if possible.

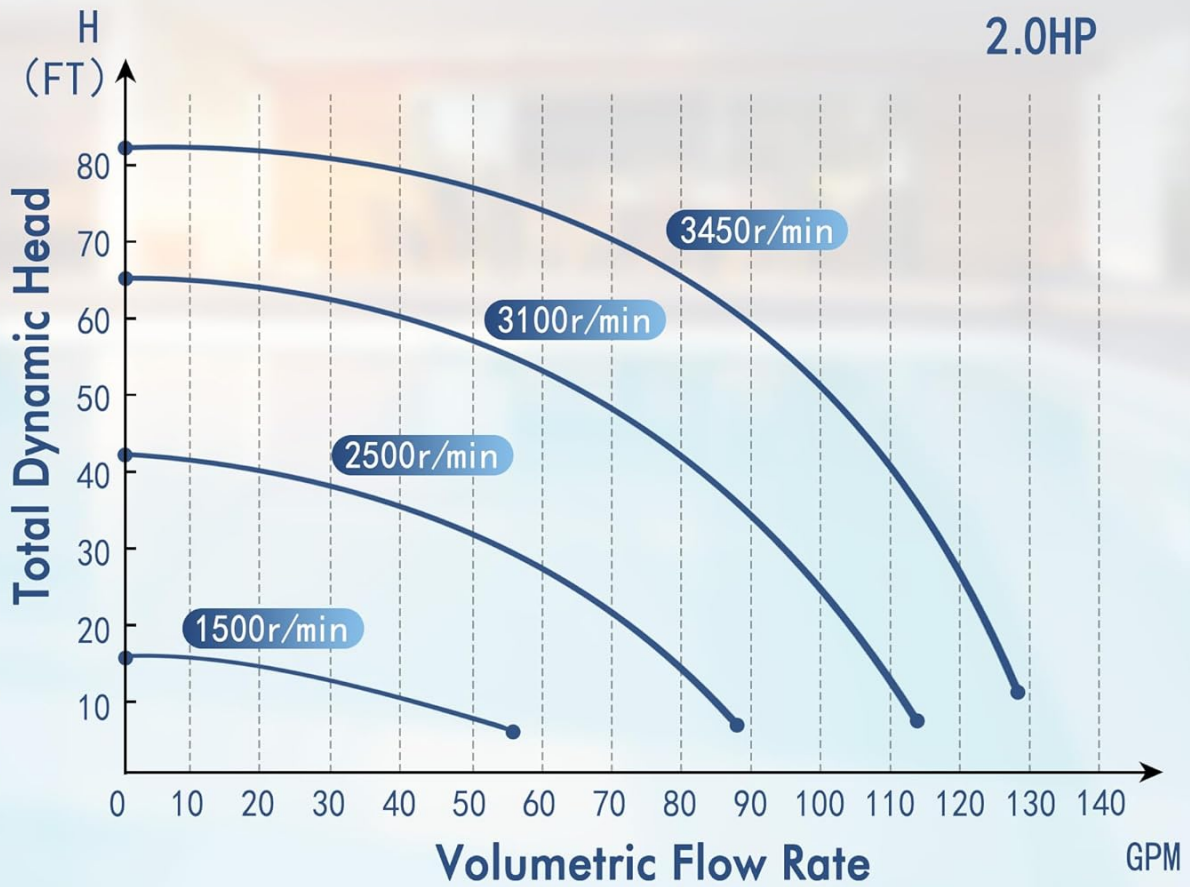
Troubleshooting

Problem	Possible Cause	Solution
Pump does not start	No power; tripped breaker; motor overload	Check power supply; reset breaker; allow motor to cool and restart
Low water flow	Clogged filter basket; air leak in suction line; low water level in pool	Clean filter basket; check and seal suction line connections; add water to pool
Unusual noise from pump	Air in pump; foreign object in impeller; worn bearings	Prime pump; inspect impeller for debris; contact service professional
Pump runs dry	Insufficient water supply; air leak	Ensure adequate water level; check for and seal air leaks; prime pump

Specifications

Feature	Detail
Brand	CHLORWORKS
Model Number	CHPVS2020P
Power Source	AC
Voltage	230 Volts
Horsepower	2.0 HP
Item Weight	32.5 Pounds
Product Dimensions	24"L x 10.6"W x 12"H
Material	Plastic
Maximum Flow Rate	132 Gallons Per Minute (7920 GPH)
Maximum Lifting Height	79 Feet

Performance Curves for Preset Speeds



QMAX.	MAX HEAD	VOLT	SPEED RANGE
7920 GPH	79 FT	230V	450-3450 RPM

Figure 6: Performance Curves for Preset Speeds (2.0HP). Illustrates the relationship between total dynamic head and volumetric flow rate at various RPM settings.

Warranty Information

The CHLORWORKS Variable Speed Inground Pool Pump 2.0 HP comes with a 2-year warranty. Please refer to the warranty card included in your package for detailed terms and conditions. Extended protection plans are also available for purchase.

Customer Support

For technical assistance, troubleshooting, or warranty claims, please contact CHLORWORKS customer support. Refer to the product packaging or the official CHLORWORKS website for current contact information.