

CAMECHO 2G+64G Car Stereo

CAMECHO 2G+64G Car Stereo Instruction Manual

FOR NISSAN ROGUE 2014-2020 (ANDROID 13 HEAD UNIT)

1. Introduction

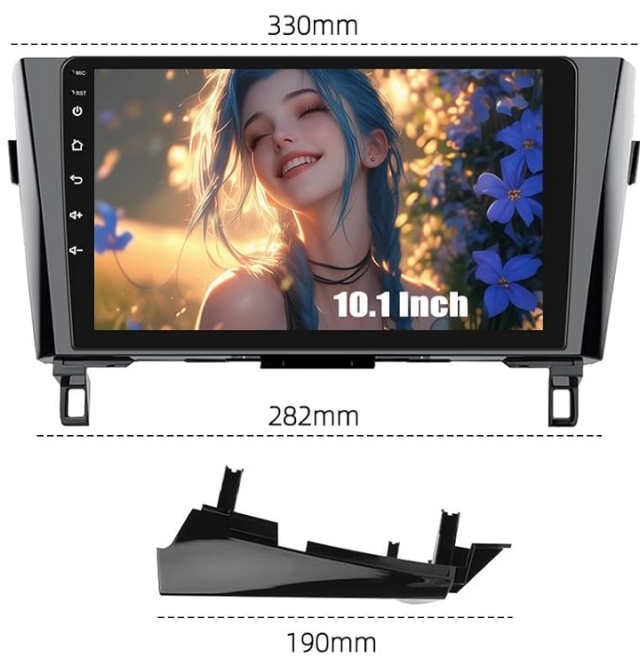
This manual provides detailed instructions for the installation, operation, and maintenance of your CAMECHO 2G+64G Car Stereo. This Android 13 head unit features a 10-inch 1080P HD touch screen, 2GB RAM, and 64GB ROM, designed specifically for Nissan Rogue models from 2014 to 2020 with a factory navigation system (High-End Version). It includes wireless CarPlay, Android Auto, GPS navigation, Bluetooth, RDS FM radio, WiFi connectivity, and supports an AHD backup camera. Please read this manual thoroughly before installation and use to ensure proper functionality and safety.

2. What's in the Box

Verify that all components are present in the package:

- 1 x Android Head Unit
- 1 x AHD Backup Camera
- 1 x External Microphone
- 1 x Canbus
- 1 x GPS Antenna
- 1 x Power Cable
- 1 x RCA Cable
- 2 x USB Cables
- 1 x Original USB cable
- 1 x Rear Camera Input Cable
- 1 x Installation Tool
- 1 x Instruction Manual

Packing List & Size



- 1. Power Cable
- 2. RCA Cable
- 3. USB Cable
- 4. Camera Input
- 5. Radio Antenna
- 6. GPS Antenna

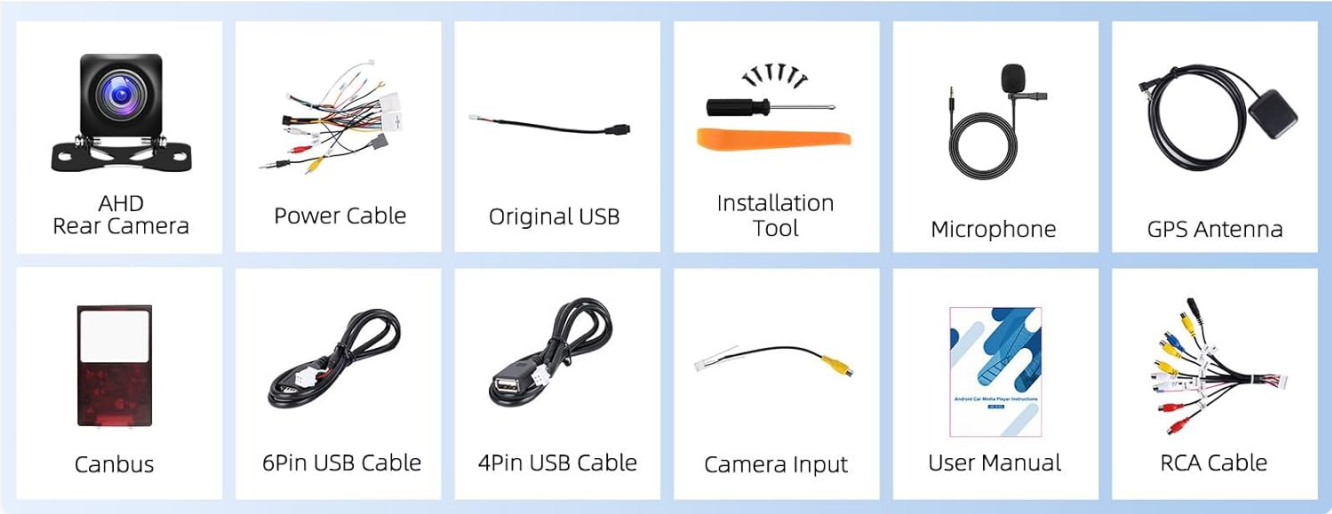


Image: Detailed view of all components included in the CAMECHO car stereo package.

3. Setup and Installation

Proper installation is crucial for the optimal performance of your car stereo. It is recommended to consult a professional for installation if you are unsure about any steps.

3.1. Compatibility Check

This head unit is specifically designed for 2014-2020 Nissan Rogue models with a factory navigation system (High-End Version). Please ensure your vehicle matches this specification. A Canbus is included for integration with your vehicle's existing systems.



Image: Visual guide for applicable Nissan Rogue models (2014-2020) and compatible factory navigation systems.

3.2. Wiring Connections

Follow the wiring diagram provided in the instruction manual and the video guides for correct connections. Ensure all cables are securely plugged in to avoid malfunctions.

Your browser does not support the video tag.


Video: Detailed guide on connecting the car stereo wiring for Nissan Rogue/X-Trail/Qashqai models. This video demonstrates the process of connecting various cables to the head unit and integrating them with the vehicle's existing wiring system.



Image: Comprehensive wiring diagram illustrating the connections for power, USB, RCA, GPS antenna, and other accessories.

3.2.1. CANBUS Connection

Ensure the CANBUS box is connected. After connecting, navigate to "Car Settings" -> "Factory (Password: 000000)" -> "CarType Setting" and select "Xinpu - Nissan - X-Trail" to enable steering wheel controls.



Backup Camera

Automatically switch to rear view camera when put in reverse, providing parking assistance.




Image: Instructions for connecting the CANBUS and configuring steering wheel controls in the system settings.

3.2.2. AHD Backup Camera Installation

Connect the AHD rear view camera for reversing assistance. The reversing input must be plugged in even if the camera is not used. Connect the camera's positive pole to the car's reversing light positive pole and the negative pole to the car's reversing light negative pole. The reversing trigger is controlled by the stereo and does not require a separate connection.



Image: Wiring diagram for installing the AHD reversing camera, showing connections to the car's reversing light and the head unit.

3.2.3. Original Backup Camera Connection

If using the original backup camera, connect the yellow AV connector ("CAM Video In") of the power cable to the Reversing Input cable. Ensure the white plug is connected to the main device for Bluetooth and WiFi signals.



Image: Wiring diagram for connecting the original backup camera to the head unit.

3.2.4. No Sound Troubleshooting

If there is no sound, connect the AUX L/R IN (or AUDIO OUT R/L) from the RCA to AUX IN R/L from the power harness. If your car radio has an amplifier, connect the blue AMP control wire in the power cable to the blue "AMP CONT" wire on the RCA harness. Then, open the "Car Amplifier" app from the top bar.

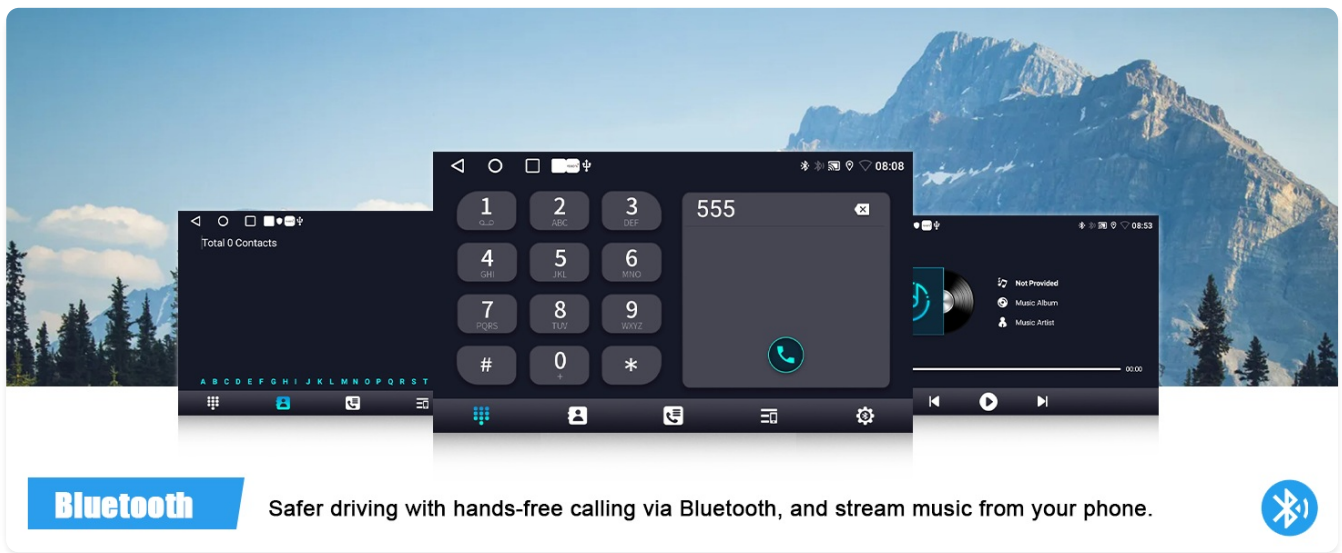


Image: Steps to troubleshoot no sound, including AUX and amplifier connections.

4. Operating Instructions

4.1. Wireless CarPlay & Android Auto

The car stereo supports both wireless and wired Apple CarPlay and Android Auto. This allows for map navigation, music streaming, calls, messages, and voice assistant (Siri/Google) control, keeping you focused and entertained.



Image: Demonstration of wireless Apple CarPlay and Android Auto interfaces on the car stereo screen.

4.1.1. Connecting Wireless CarPlay

1. Enable Bluetooth on your iPhone and pair with the car radio.
2. Turn on the app "Zlink".
3. If failed, connect your phone to the hotspot of the car radio, then click "Zlink" app again. Keep Bluetooth and hotspot connected.

4.1.2. Connecting Wireless Android Auto

1. Ensure you have installed the "Android Auto" app on your cell phone.
2. Enable Bluetooth on your Android phone and pair with the car radio.
3. Turn on the app "Zlink".



Image: Step-by-step guide for connecting both Wireless Apple CarPlay and Android Auto.

4.2. GPS Navigation & WiFi

The unit has a built-in GPS receiver and WiFi connectivity, supporting both online and offline maps for route planning. You can also install or delete Android apps like YouTube, Gmail, TikTok, and Spotify from the Application Store.



Image: Display of GPS navigation with online/offline map capabilities and various apps accessible via WiFi.

4.3. Bluetooth Features & FM RDS Radio

Stay connected with hands-free calls and wireless music streaming via Bluetooth. The high-quality digital stereo (RDS) FM tuner allows you to enjoy your favorite radio stations.



Image: User interface for Bluetooth hands-free calling and FM RDS radio station selection.

4.4. Steering Wheel Control

The unit works with original steering wheel buttons, allowing easy control of music and hands-free calls for safety and concentration on the road.



Image: Display of the car stereo interface controlled by steering wheel buttons.

4.5. Equalizer Adjust & Multiple UI Themes

Utilize the built-in preset EQ to choose from various music styles like Rock or Pop. The multimedia system also supports multiple customized UI desktop themes for personalization.



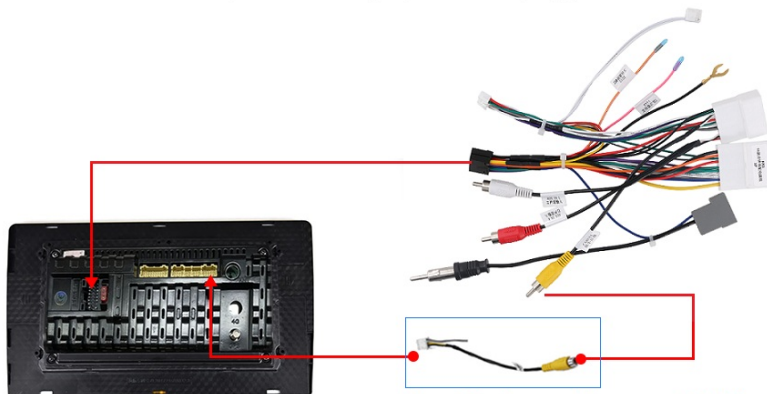
Image: Equalizer adjustment screen and examples of multiple customizable UI themes.

4.6. Mirror Link

Cast your cell phone's screen to the car radio touchscreen for convenient viewing of content.

Original Backup Camera Connection

Tip: The reversing input must be plugged in even when the reversing camera is not used.



Reversing Camera Wiring

If you are using original backup camera, please connect the yellow AV connector ("CAM Video In") of power cable to the Reversing Input cable.

The white plug must be connected to the main device, or you can't get bluetooth and wifi signals.

Image: A smartphone screen mirrored onto the car stereo display.

5. Maintenance

To ensure the longevity and optimal performance of your CAMECHO car stereo, follow these maintenance guidelines:

- **Cleaning:** Use a soft, dry cloth to clean the touchscreen and exterior. Avoid abrasive cleaners or solvents that could damage the surface.

- **Software Updates:** Periodically check for software updates via the system settings to ensure you have the latest features and bug fixes. Connect to a stable Wi-Fi network to download updates.
- **Temperature Control:** Avoid exposing the unit to extreme temperatures. Prolonged exposure to direct sunlight or very cold conditions can affect performance and lifespan.
- **Cable Connections:** Occasionally check all cable connections to ensure they are secure and free from damage. Loose connections can lead to intermittent issues.

6. Troubleshooting

If you encounter issues with your car stereo, refer to the following common troubleshooting steps:

- **No Power:** Check all power cable connections. Ensure the vehicle's ignition is on and the unit is receiving power. Verify fuses are intact.
- **No Sound:** Refer to section 3.2.4 for detailed steps on troubleshooting no sound issues, including AUX and amplifier connections.
- **Backup Camera Not Displaying:** Ensure the backup camera is correctly wired as per sections 3.2.2 and 3.2.3. Check if the reversing input is properly connected to the head unit.
- **GPS Signal Loss:** Ensure the GPS antenna is securely connected and placed in an area with a clear view of the sky (e.g., under the front windshield).
- **Bluetooth/WiFi Connectivity Issues:** Ensure the white plug for the rear camera input cable is connected to the main device, as it is essential for Bluetooth and WiFi signals.
- **Steering Wheel Controls Not Working:** Verify the CANBUS connection and ensure the correct car type setting is selected in the factory settings (refer to section 3.2.1).

7. Specifications

Model Name	2G+64G Car Stereo
Brand	CAMECHO
Operating System	Android 13
Display Size	10.1 Inches
Product Dimensions	13"L x 1.2"W x 7.5"H
Item Weight	2.64 pounds
Special Features	Android Auto, Apple CarPlay
Connectivity Technology	Bluetooth, WiFi
Map Type	Worldwide

8. Warranty

This CAMECHO car stereo comes with a 1-year warranty from the date of purchase. Please retain your proof of purchase for any warranty claims. For details regarding extended protection plans, please refer to the product's purchase page or contact customer support.

9. Customer Support

For any questions, technical assistance, or support regarding your CAMECHO car stereo, please contact our customer support team. CAMECHO specializes in car stereo and backup systems, providing high-quality automotive intelligent terminals.

Contact Email: CAMECHOVIP@126.com

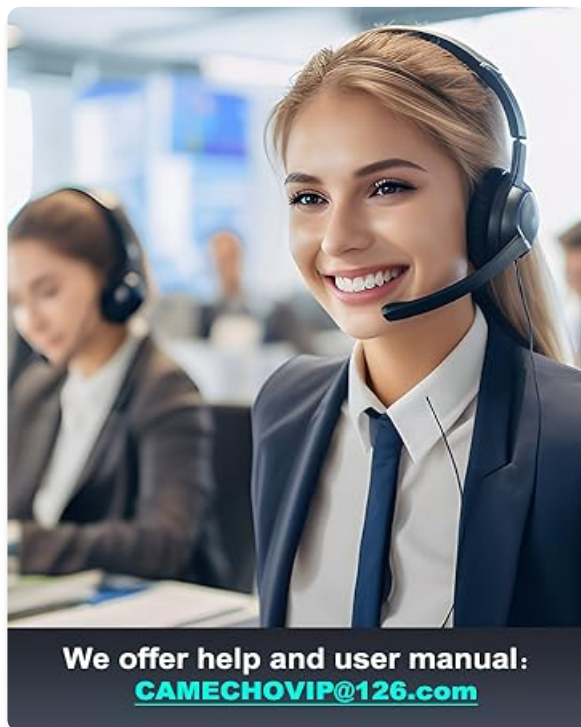


Image: A customer support representative ready to assist with product inquiries.