

## WUBEN T70, C2

# WUBEN T70 and C2 Rechargeable Flashlights User Manual

Model: T70, C2

## 1. INTRODUCTION

This manual provides detailed instructions for the safe and effective operation, maintenance, and troubleshooting of your WUBEN T70 and C2 rechargeable flashlights. Please read this manual thoroughly before using the product to ensure optimal performance and longevity.

## 2. SAFETY INFORMATION

- Do not shine the flashlight directly into eyes. The intense light can cause temporary vision impairment or permanent damage.
- Keep out of reach of children.
- Do not disassemble the flashlight head or body. This may damage the flashlight and void the warranty.
- Use only the specified rechargeable battery. Improper battery use can lead to fire, explosion, or leakage.
- Avoid exposing the flashlight to extreme temperatures or direct sunlight for prolonged periods.
- Ensure the charging port cover is securely closed to maintain water resistance.

## 3. PACKAGE CONTENTS

Please check the package contents upon receipt. If any items are missing or damaged, contact your retailer or WUBEN customer service.

- WUBEN T70 Flashlight (with battery) x 1
- WUBEN C2 Flashlight (with battery) x 1
- USB-C Charging Cable x 1
- Holster (for T70) x 1

- Lanyard x 1
- Spare O-rings x 2
- User Manual x 1



Image: Contents of the WUBEN T70 and C2 flashlight package, including both flashlights, a USB-C charging cable, a holster, a lanyard, spare O-rings, and the user manual.

## 4. PRODUCT OVERVIEW

Familiarize yourself with the main components of your WUBEN T70 and C2 flashlights.



Image: The WUBEN T70 (larger) and WUBEN C2 (smaller) flashlights displayed together, showing their distinct sizes and designs. Both feature a side switch and a textured body for grip.

### WUBEN T70 Components:

- **Head:** Contains the LED and reflector.
- **Side Switch:** For power and mode selection.
- **USB-C Charging Port:** Located under a protective cover.
- **Battery Tube:** Houses the rechargeable battery.
- **Tail Cap:** Secures the battery and may have a lanyard hole.

### WUBEN C2 Components:

- **Head:** Contains the LED and reflector.
- **Side Switch:** For power and mode selection.
- **USB-C Charging Port:** Located under a protective cover.
- **Battery Tube:** Houses the rechargeable battery.
- **Pocket Clip:** For secure carrying.
- **Tail Cap:** Secures the battery and may have a lanyard hole.

## 5. SETUP

---

### 5.1 Battery Installation

1. Unscrew the tail cap of the flashlight.
2. Insert the provided rechargeable battery with the positive (+) end facing towards the head of the flashlight.
3. Screw the tail cap back on tightly to ensure proper contact and water resistance.

### 5.2 Charging

Both T70 and C2 flashlights feature a built-in USB-C charging port.

1. Locate the USB-C charging port on the flashlight body (usually covered by a rubber flap).
2. Open the rubber flap.
3. Connect the provided USB-C cable to the flashlight and the other end to a USB power source (e.g., wall adapter, computer, power bank).
4. The indicator light on the side switch will show the charging status:
  - **Red:** Charging
  - **Blue:** Fully charged
5. Charging typically takes approximately 4 hours for a full charge (using a 5V/2A adapter).
6. Once charging is complete, disconnect the cable and securely close the rubber flap to maintain water resistance.



# 7 Lighting Mode & 4800mAh



**Turbo**  
2000 Lumens



**High**  
1200 Lumens



**Med**  
400 Lumens



**Low**  
130 Lumens



**Eco**  
5 Lumens



**Strobe**  
1200 Lumens



**SOS**  
200 Lumens

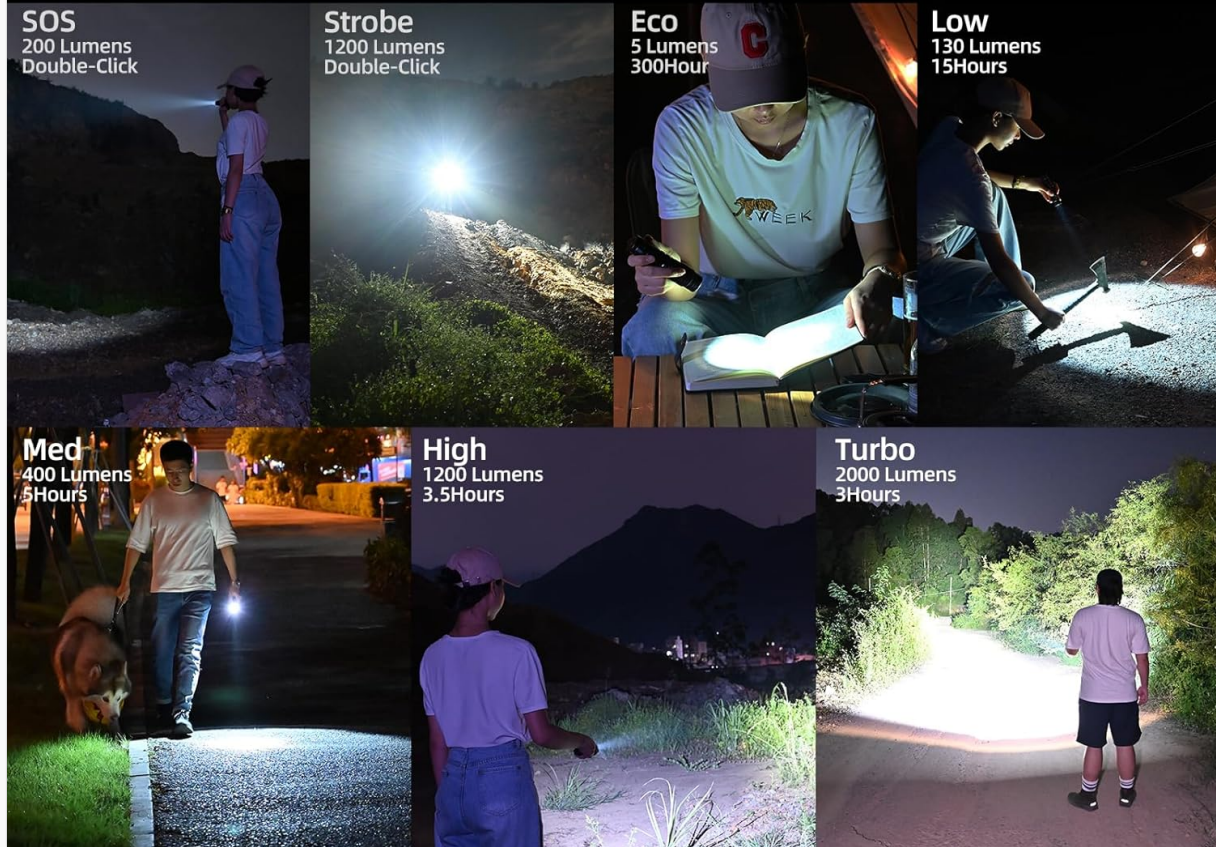


Image: The WUBEN C2 flashlight demonstrating its USB-C fast charging capability and its ability to function as a portable power bank via a USB-A output, charging a smartphone.

## 6. OPERATING INSTRUCTIONS



Both flashlights utilize a single side switch for all operations.

### 6.1 WUBEN T70 Operation

- **Turn On/Off:** Single click the side switch.
- **Change Brightness (Default Output):** When on, press and hold the side switch to cycle through Low, Med, High. Release to select.
- **Turbo Mode:** Double click the side switch from any state (on or off). Double click again to return to the previous mode.
- **Strobe Mode:** Triple click the side switch from any state (on or off). Single click to turn off.
- **SOS Mode:** Quadruple click the side switch from any state (on or off). Single click to turn off.
- **Lockout Function:** From off, press and hold the side switch for 3 seconds until the light flashes to lock. Repeat to unlock. This prevents accidental activation.
- **Battery Level Indicator:** When the flashlight is on, the indicator light on the switch shows battery

status:

- **Blue (constant):** 90-100%
- **Blue (flashing):** 40-90%
- **Red (constant):** 15-40%
- **Red (flashing):** Below 15% (recharge immediately)

| FL1 Standard  | Turbo            | High        | Med        | Low       | Strobe      | SOS        |
|---|------------------|-------------|------------|-----------|-------------|------------|
|  | 4200~1300 Lumens | 1300 Lumens | 400 Lumens | 40 Lumens | 4200 Lumens | 100 Lumens |
|  | 1+120 Minutes    | 3.5 Hours   | 7.5 Hours  | 35 Hours  | /           | /          |

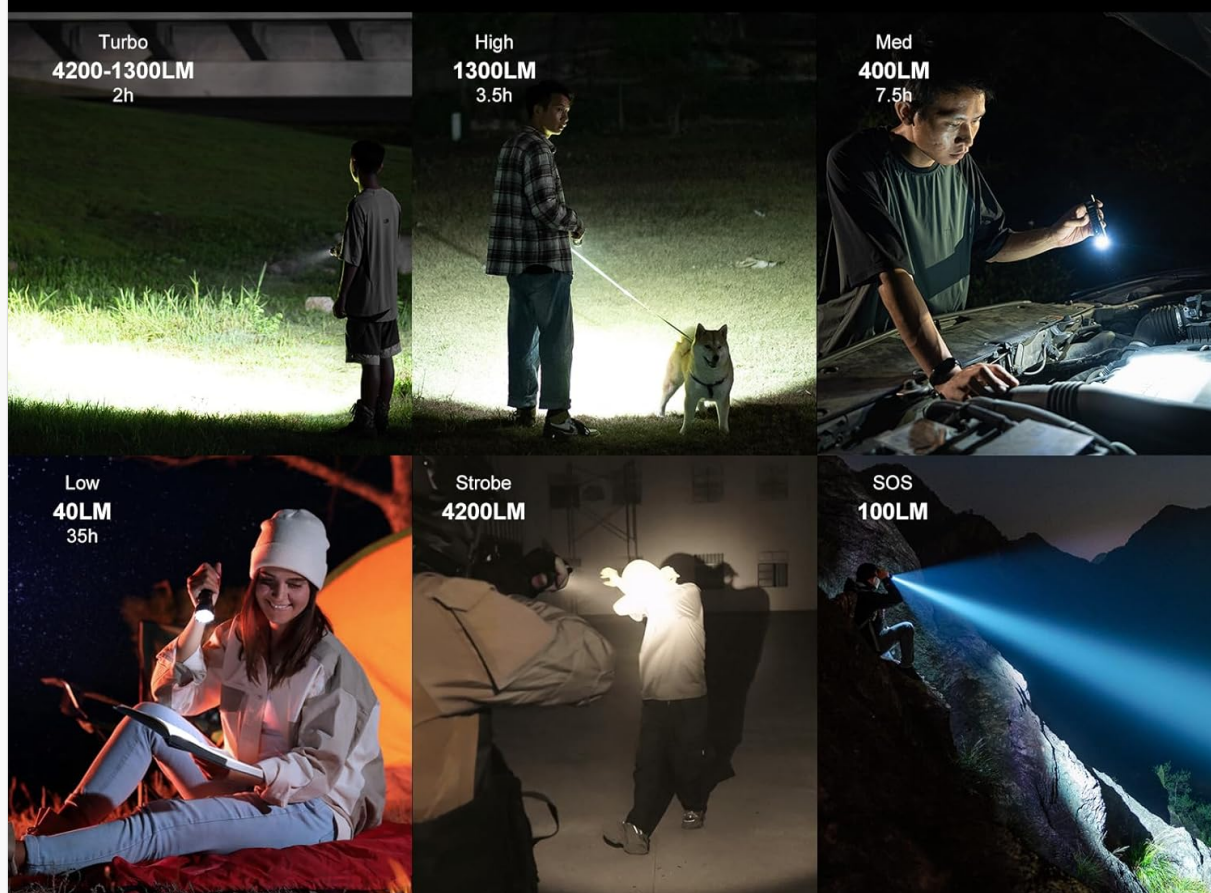


Image: A chart detailing the WUBEN T70's FL1 standard brightness levels (Turbo, High, Med, Low, Strobe, SOS) and their corresponding runtimes. Below the chart are illustrative photos of each mode in use, demonstrating their practical applications.

## 6.2 WUBEN C2 Operation

- **Turn On/Off:** Single click the side switch.
- **Change Brightness:** When on, press and hold the side switch to cycle through Low, Med, High, Turbo. Release to select.
- **Eco Mode:** From off, press and hold the side switch for 1 second to activate Eco mode.
- **Strobe Mode:** Double click the side switch from any state (on or off). Single click to turn off.
- **SOS Mode:** Triple click the side switch from any state (on or off). Single click to turn off.
- **Lockout Function:** From off, press and hold the side switch for 5 seconds until the light flashes to lock. Repeat to unlock.



- **Battery Level Indicator:** When the flashlight is on, the indicator light on the switch shows battery status:
  - **Blue (constant):** 90-100%
  - **Blue (flashing):** 40-90%
  - **Red (constant):** 15-40%
  - **Red (flashing):** Below 15% (recharge immediately)
- **Power Bank Function:** The C2 can act as a power bank. Connect a USB-A to USB-C cable (not included) from the C2's USB-C port to your device. The C2 will automatically begin charging your device.

## TYPE-C Fast Charging

About 4 hours fast charging with any USB port (5V/2A)



## USB-A Portable

Provides extra security by charging devices in an emergency (5V/2A)



Image: A visual representation of the WUBEN C2 flashlight's seven lighting modes (Turbo, High, Med, Low, Eco, Strobe, SOS) with their respective lumen outputs and approximate runtimes. Various scenarios illustrate the practical use of each mode.

## 7. MAINTENANCE

- **Cleaning:** Wipe the flashlight with a clean, soft cloth. For stubborn dirt, use a slightly damp cloth. Do not use harsh chemicals or abrasives.

- **Lubrication:** Periodically apply silicone grease to the O-rings and threads to maintain water resistance and smooth operation.
- **Battery Care:**
  - Recharge the battery when the indicator shows low power.
  - If storing the flashlight for an extended period, remove the battery or charge it every 3-6 months to prevent over-discharge.
- **Storage:** Store the flashlight in a cool, dry place, away from direct sunlight and extreme temperatures.

## 8. TROUBLESHOOTING

| Problem                                   | Possible Cause  | Solution  |
|---|---|---|
| Flashlight does not turn on.              | <ul style="list-style-type: none"><li>• Battery is dead or low.</li><li>• Battery inserted incorrectly.</li><li>• Tail cap is loose.</li><li>• Flashlight is in lockout mode.</li></ul> | <ul style="list-style-type: none"><li>• Charge the battery.</li><li>• Reinsert battery with positive (+) end towards the head.</li><li>• Tighten the tail cap.</li><li>• Unlock the flashlight (refer to Operating Instructions).</li></ul> |
| Light flickers or turns off unexpectedly. | <ul style="list-style-type: none"><li>• Low battery.</li><li>• Loose connections.</li><li>• Overheating protection activated.</li></ul>   | <ul style="list-style-type: none"><li>• Recharge the battery.</li><li>• Tighten tail cap and ensure battery is secure.</li><li>• Allow the flashlight to cool down. It will automatically reduce output to prevent damage.</li></ul>        |
| Charging not working.                     | <ul style="list-style-type: none"><li>• Charging cable or adapter faulty.</li><li>• Charging port dirty.</li></ul>  | <ul style="list-style-type: none"><li>• Try a different USB-C cable and power adapter.</li><li>• Clean the charging port gently with a dry cotton swab.</li></ul>   |

## 9. SPECIFICATIONS

### 9.1 WUBEN T70 Specifications

| Feature           | Detail        |
|-------------------|---------------|
| LED               | XHP70.2 6000K |
| Max Output        | 4200 Lumens   |
| Max Beam Distance | 250 Meters    |



| Feature           | Detail                          |
|-------------------|---------------------------------|
| Battery           | 5000mAh Rechargeable (included) |
| Charging Port     | USB-C (5V/2A)                   |
| Waterproof Rating | IP68                            |
| Impact Resistance | 1.5 Meters                      |
| Material          | Aircraft-grade 6061 T6 Aluminum |

# ILLUMINATES THE ROAD AHEAD





Max 4200 Lumens



Anti Impact 1.5M



MAX 250 Meters



TYPE-C Charging



IP68 Waterproof

Image: A person using the WUBEN T70 flashlight to illuminate a dark, wooded path at night, highlighting its powerful beam and long throw distance. Key features like 4200 lumens, 250 meters beam, IP68 waterproof, and 1.5M impact resistance are displayed.

### 9.2 WUBEN C2 Specifications

| Feature | Detail      |
|---------|-------------|
| LED     | SST40 6500K |

| Feature             | Detail                          |
|---------------------|---------------------------------|
| Max Output          | 2000 Lumens                     |
| Max Beam Distance   | 358 Meters                      |
| Battery             | 4800mAh Rechargeable (included) |
| Charging Port       | USB-C (5V/2A)                   |
| Power Bank Function | Yes (USB-A output)              |
| Waterproof Rating   | IP68                            |
| Impact Resistance   | 1.5 Meters                      |
| Material            | Aircraft-grade 6061 T6 Aluminum |
| Weight              | Approximately 6.7 ounces (190g) |

# PACKING LIST

- ❶

T70 X1 (WITHIN BATTERY)
- ❷

WATERPROOF RING X 2
- ❸

HOLSTER X 1
- ❹

CHARGING CABLE X 1
- ❺

LANYARD X1
- ❻

INSTRUCTION MANUAL X 1



Image: A person using the WUBEN C2 flashlight to light up a dark forest path, demonstrating its powerful beam and long

throw distance of up to 358 meters. Key specifications like 2000 max lumens and 4800mAh power bank function are highlighted.



Image: A visual comparison of the WUBEN C2 flashlight's size and weight, showing it to be light and compact, easily fitting into a pocket. Dimensions are provided, and its weight of 109g is compared to a smartphone.

## 10. WARRANTY AND SUPPORT

WUBEN products come with a warranty against defects in materials and workmanship. Please refer to the official WUBEN website or your purchase documentation for specific warranty terms and conditions. For technical support, warranty claims, or any questions regarding your WUBEN T70 or C2 flashlight, please contact WUBEN customer service:

- **Website:** [www.wubenlight.com](http://www.wubenlight.com)
- **Email:** [service@wubenlight.com](mailto:service@wubenlight.com)

Please have your model number and purchase date ready when contacting support.



