

ZIHNIC S05A

ZIHNIC S05A Wireless AI-Translation Earphones User Manual

Model: S05A

1. INTRODUCTION

Thank you for choosing the ZIHNIC S05A Wireless AI-Translation Earphones. These earphones are designed to provide real-time language translation, high-quality audio, and comfortable wear for various activities including business, travel, and daily use. This manual provides detailed instructions on how to set up, operate, and maintain your earphones to ensure optimal performance.



Image 1.1: ZIHNIC S05A Wireless AI-Translation Earphones and Charging Case.

2. PRODUCT OVERVIEW

2.1 Key Features

- **Real-Time AI Translation:** Supports 4 modes of AI-powered language translation for seamless communication.
- **High-Definition Sound:** Equipped with HD sound drivers for clear audio, even in noisy environments.
- **Bluetooth 5.0 Connectivity:** Ensures a stable and fast wireless connection up to 10 meters.
- **Extended Battery Life:** Up to 28 hours of total playtime with the included charging case.
- **Comfortable Design:** Features an ergonomic clip-on design for all-day wear.
- **IPX5 Waterproof Rating:** Provides protection against sweat and light splashes.
- **Touch Control:** Intuitive touch controls for managing audio and translation functions.

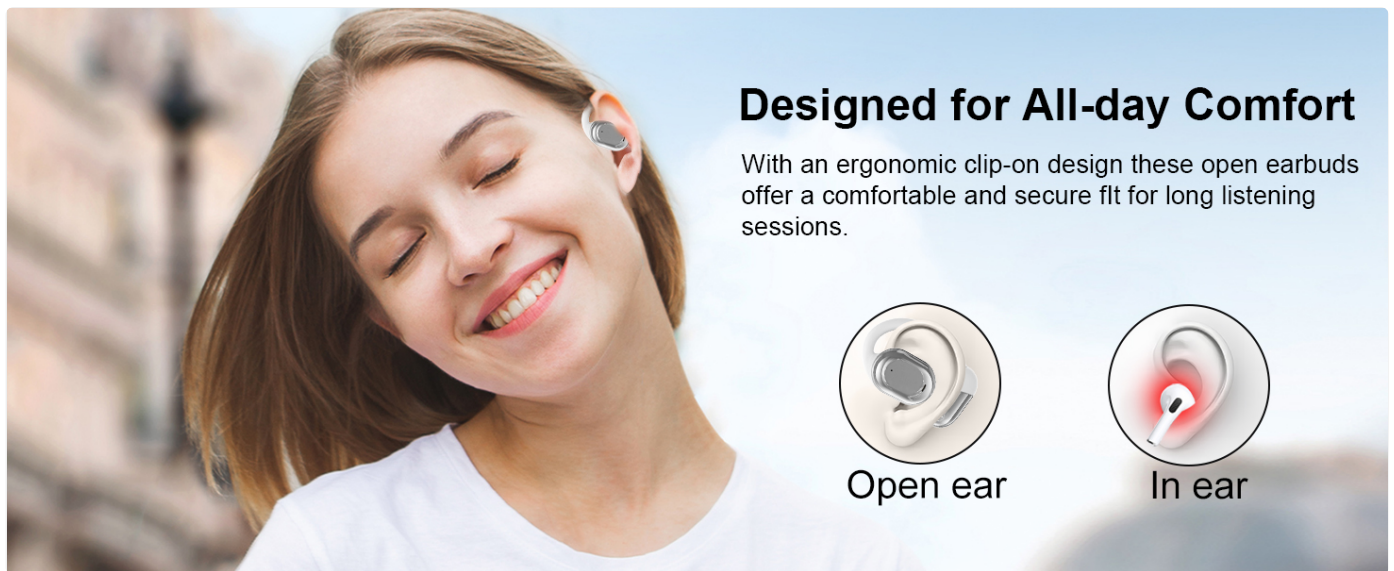


Image 2.1: The ergonomic clip-on design ensures comfortable and secure fit for long listening sessions.

2.2 What's in the Box

- ZIHNIC S05A Wireless AI-Translation Earphones
- Wireless Charging Case
- User Manual (This document)
- Charging Cable (not explicitly listed but typically included)

3. SETUP AND WEARING INSTRUCTIONS

3.1 Initial Charge

Before first use, fully charge the earphones and the charging case. Connect the charging case to a power source using the provided charging cable. The indicator lights on the case will show the charging status.

3.2 Wearing the Earphones

For optimal comfort and sound quality, ensure the earphones are worn correctly.

1. Take out each earbud from the charging case.
2. Hang the end of the earbud over your ear bone.
3. Turn the earbud and slide it behind your ear.
4. Adjust the ear hook to fit securely and comfortably around your ears.

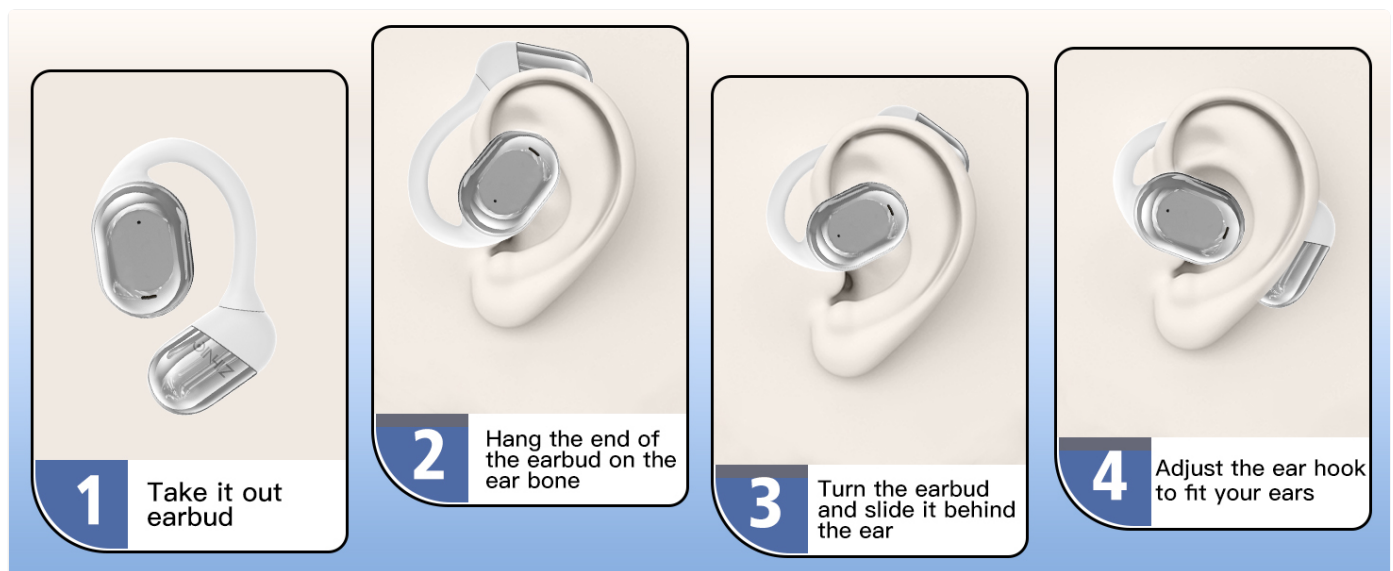


Image 3.1: Step-by-step guide on how to properly wear the ZIHNIC S05A earphones.

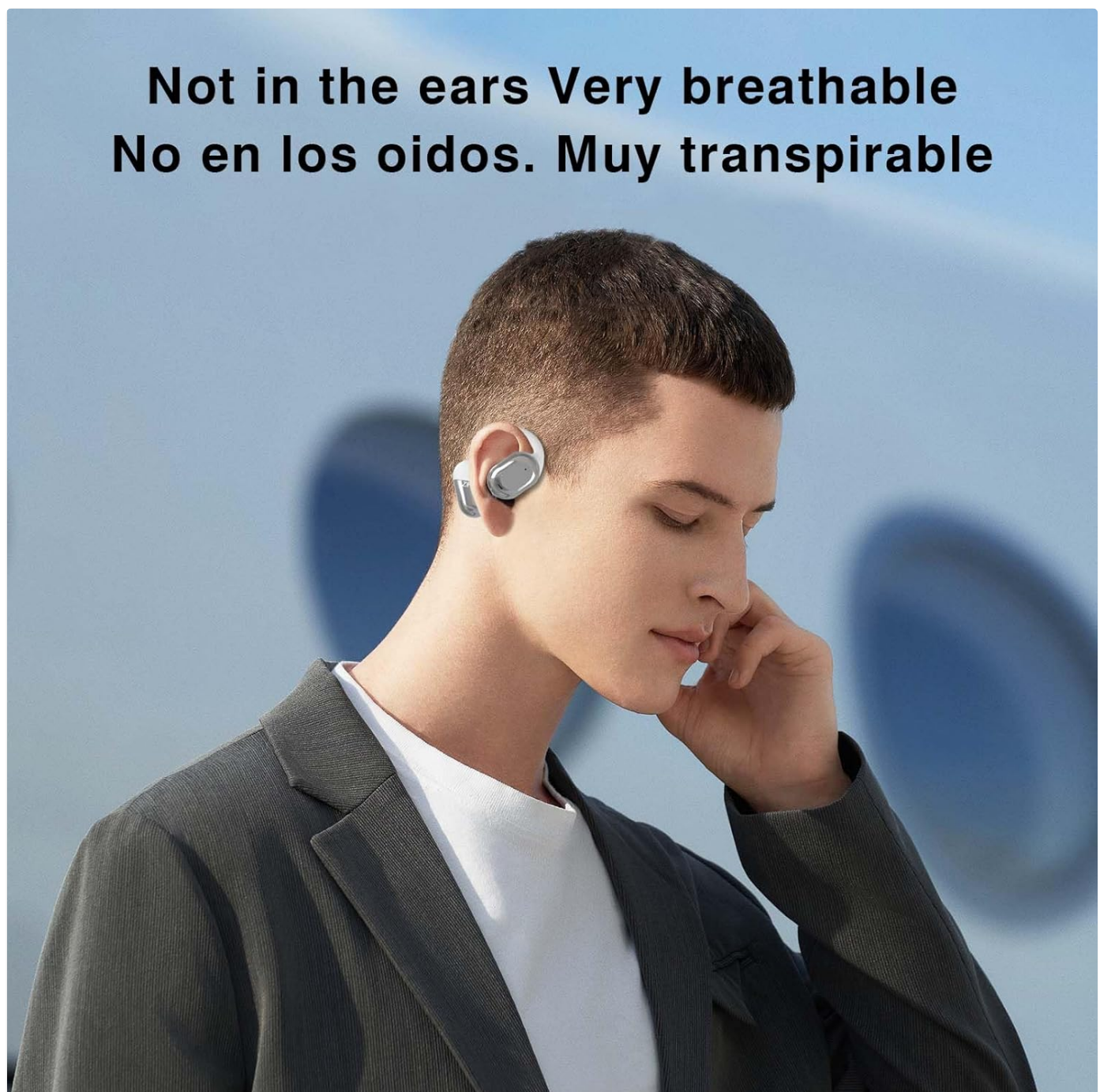


Image 3.2: The open-ear design ensures breathability and comfort for extended use.

4. OPERATING INSTRUCTIONS

4.1 Bluetooth Pairing

1. Ensure the earphones are charged and removed from the charging case. They will automatically enter pairing mode.
2. On your smartphone, tablet, or other Bluetooth-enabled device, go to the Bluetooth settings.
3. Search for available devices and select "ZIHNIC S05A" (or similar name) from the list.
4. Once connected, you will hear an audio prompt, and the earphones will be ready for use.

The Bluetooth 5.0 technology provides a stable connection within a 10-meter range.

4.2 Touch Controls

The ZIHNIC S05A earphones feature intuitive touch controls. Specific functions may vary based on the connected device and application. Common touch controls include:

- **Single Tap:** Play/Pause music, Answer/End call.
- **Double Tap:** Next track (right earbud), Previous track (left earbud).
- **Long Press:** Activate voice assistant, Reject call.
- **Triple Tap:** Switch translation modes (refer to the translation app for specific mode controls).

4.3 AI Translation Modes

The earphones support multiple AI translation modes through a dedicated application on your smartphone. Download the official ZIHNIC translation app from your device's app store.

- **Real-Time Translation:** For instant, natural language conversion during conversations.
- **AI Chat Mode:** Engage in translated text conversations via the app.
- **AI Automatic Translation:** Continuous translation for lectures, presentations, or media.
- **Face-to-Face Translation:** Optimized for direct conversations with another person, displaying translated text on your phone.

Image 4.1: The earphones support translation in 134 languages with high accuracy and fast response.

Natural and Instant Translation Traducción Natural e Instantanea



Image 4.2: The earphones facilitate natural and instant language translation.



Image 4.3: AI Chat mode allows for translated text conversations through the companion application.



Image 4.4: Real-time translation in action, showing a user interacting with the translation feature.

Face-to-Face Translation

Traducción cara a cara



Image 4.5: Face-to-Face Translation mode, ideal for direct conversations, with translated speech displayed.

5. MAINTENANCE

Proper maintenance ensures the longevity and performance of your ZIHNIC S05A earphones.

- **Cleaning:** Use a soft, dry cloth to clean the earphones and charging case. Avoid using abrasive materials or harsh chemicals.
- **Water Resistance:** The earphones are IPX5 waterproof, meaning they are resistant to sweat and light splashes. Do not submerge them in water or expose them to heavy rain. Ensure they are dry before placing them back in the charging case.
- **Storage:** When not in use, store the earphones in their charging case to protect them from dust and damage. Store in a cool, dry place.
- **Battery Care:** To preserve battery life, avoid fully discharging the earphones frequently. Charge them regularly, even if not in constant use.

6. TROUBLESHOOTING

If you encounter issues with your earphones, refer to the following troubleshooting steps:

Problem	Possible Solution
Earphones not pairing	Ensure earphones are charged and out of the case. Turn off and on Bluetooth on your device. Forget the device in your Bluetooth settings and try pairing again. Ensure earphones are within 10 meters of your device.
No sound	Check volume levels on both earphones and connected device. Ensure earphones are properly connected via Bluetooth. Try playing different audio sources.
Translation not working	Ensure the ZIHNIC translation app is installed and updated. Check your internet connection (required for translation services). Verify microphone permissions for the app. Ensure correct source and target languages are selected in the app.
Earphones not charging	Check charging cable and power adapter. Ensure charging contacts on earphones and case are clean and dry. Try a different charging cable or power source.

7. SPECIFICATIONS

Feature	Detail
Model Name	S05A
Connectivity Technology	Wireless (Bluetooth)
Wireless Communication Technology	Bluetooth 5.0
Bluetooth Range	10 Meters
Water Resistance Level	IPX5 (Waterproof)
Control Method	Touch
Ear Placement	On Ear
Form Factor	In Ear
Audio Driver Type	Dynamic Driver
Frequency Range	20 Hz - 20,000 Hz
Impedance	32 Ohm
Battery Life (Total with Case)	Up to 28 hours
Included Components	Wireless Charging Case




Feature	Detail
Item Weight	1.76 ounces
Manufacturer	zihnic

8. WARRANTY AND SUPPORT

For warranty information and customer support, please refer to the documentation included with your purchase or visit the official ZIHNIC website. Keep your proof of purchase for warranty claims.
If you require further assistance, please contact ZIHNIC customer service.



Related Documents - S05A

<div><p>User's Manual</p><p>WH-816 Bluetooth Headphone</p><p>English / Deutsch / Español / Français / Italiano</p></div>	<p>WH-816 Bluetooth Headphone User Manual</p> <p>User manual for the WH-816 Bluetooth Headphone, covering product features, operation, pairing, MP3/FM modes, call handling, charging, and precautions.</p>
<div><p>User's Manual</p><p>WH-816 Bluetooth Headphone</p><p>English / Deutsch / Español / Français / Italiano</p></div>	<p>WH-816 Bluetooth Headphone User Manual</p> <p>User manual for the WH-816 Bluetooth Headphone, covering product features, operation, pairing, MP3/FM modes, call handling, charging, and precautions.</p>
<div></div>	<p>SEIKO S05A Digital Stopwatch - Industrial Measurement User Manual</p> <p>Comprehensive user manual for the SEIKO S05A Digital Stopwatch, detailing features, operations, settings, and specifications for industrial measurement applications. Learn how to use stopwatch, timer, and alarm functions.</p>