

Meross MST100

Meross MST100 WiFi Smart Sprinkler Timer Instruction Manual

Model: MST100

1. INTRODUCTION

The Meross MST100 WiFi Smart Sprinkler Timer provides intelligent and automated control over your garden irrigation system. This device, when paired with the Meross Smart Hub MSH400HK (required, sold separately), allows for remote management, smart scheduling based on weather conditions, and detailed water consumption tracking. This manual will guide you through the installation, operation, and maintenance of your MST100 sprinkler timer.



Figure 1: Meross MST100 Smart Sprinkler Timer, MSH400 Hub, and Meross app interface.

2. PACKAGE CONTENTS

- Meross MST100 Smart Sprinkler Timer
- User Manual
- *Note: The Meross Smart Hub MSH400HK is required for operation and is sold separately.*

3. SETUP

3.1 Meross App Installation

1. Download the Meross app from the Apple App Store or Google Play Store.
2. Register for a Meross account or log in if you already have one.

3.2 Connecting the Meross Smart Hub (MSH400HK)

The MST100 Sprinkler Timer communicates wirelessly with the Meross Smart Hub. Ensure your hub is set up and connected to your home's 2.4GHz WiFi network before proceeding.

Cómo Conectar el Hub WiFi

Solo Wi-Fi 2.4GHz

1



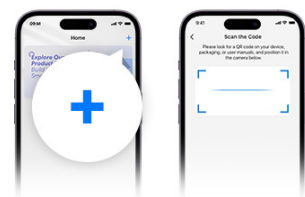
Enciende el Hub WiFi y conecta tu smartphone a un Wi-Fi 2.4GHz

2



Descarga la App Meross

3



Haz clic en "+" y Añade Smart Hub "MSH400"

Escanear código y emparejar

Figure 2: Instructions for connecting the Meross WiFi Hub.

1. Power on the Meross WiFi Hub and ensure your smartphone is connected to a 2.4GHz WiFi network.
2. Open the Meross app.
3. Tap the "+" icon to add a new device.
4. Select "Smart Hub (MSH400)" and follow the in-app instructions to pair the hub.

3.3 Installing and Pairing the Smart Sprinkler Timer (MST100)

The MST100 is designed for outdoor use and connects directly to a standard outdoor faucet.

I Conexiones de Latón

Previene corrosión y óxido,
garantizando durabilidad y estanqueidad.



Figure 3: The MST100 features durable brass connections for leak-proof installation.

Cómo Conectar el Programador de Riego Inteligente

4

El compartimento de la batería es ajustado debido al diseño impermeable, usa un destornillador para abrirlo suavemente.



Inserta 4 pilas AA de 1.5V

5



Presiona el botón del programador de riego dos veces, el indicador parpadeará.

6



Regador

Presiona el botón del hub dos veces, el indicador del hub parpadeará. Espera unos segundos hasta que el indicador deje de parpadear, lo que indica que el programador de riego y el hub se han emparejado con éxito.

Figure 4: Battery installation and pairing process for the MST100.

1. **Install Batteries:** The battery compartment is designed to be waterproof. Use a screwdriver to gently open it. Insert 4 x AA 1.5V batteries, ensuring correct polarity.
2. **Attach to Faucet:** Connect the MST100 to your outdoor faucet. Ensure a secure, watertight connection.
3. **Initiate Pairing on Hub:** Press the button on the Meross Smart Hub twice. The hub's indicator light will flash.
4. **Initiate Pairing on Timer:** Press the button on the MST100 Sprinkler Timer twice. Its indicator light will flash.
5. **Confirm Pairing:** Wait a few seconds until the indicator lights stop flashing, indicating successful pairing between the sprinkler timer and the hub.

4. OPERATING THE SPRINKLER TIMER

4.1 Manual Irrigation

You can manually activate watering directly from the device or through the Meross app.

- **On-Device:** Press the green button on the MST100 once to start manual watering.
- **Via App:** Open the Meross app, select your MST100 device, and tap the manual irrigation button.

The manual irrigation feature includes an automatic shut-off, defaulting to 15 minutes to prevent water waste. This duration can be adjusted within the Meross app.

I Uso Sencillo

Compatible con cualquier grifo exterior.
Control total mediante app Meross.



Figure 5: Simple manual control via the Meross app.

4.2 Smart Scheduling and Weather Adaptation

The Meross app allows you to create customized watering schedules and benefits from intelligent weather integration.

Programas de Riego Fiables

Crea planes de riego fácilmente.
Funciona sin conexión.

Jardín Trasero

06:30 | 15 min

Cada 3 días



Prato

19:28 | 30 min

Al atardecer,
días impares

Flores

22:00 | 10 min

Lun, Mié, Sab



Figure 6: Examples of customizable watering schedules within the Meross app.

- **Custom Plans:** Create schedules based on specific days, intervals (e.g., every 3 days, odd days), and times. These plans function even without an internet connection once set.
- **Weather Integration:** The timer automatically adjusts or skips scheduled watering cycles based on local weather data (rain forecast or detection) to prevent overwatering and conserve water. You will receive push notifications for skipped plans.

Programación Meteorológica Inteligente

Sincronizado con Datos Meteorológicos Locales/Personales – cancela automáticamente el riego antes, durante y después de la lluvia para ese período de tiempo.

 **Antes de la Lluvia**

 **Durante la Lluvia**

 **Después de la Lluvia**

* Datos meteorológicos de la estación meteorológica local que usted elija.



Omitir Plan

El plan «Flores de Jardín» se omite por 8,9 mm de precipitación.



Watering plan Yard Flowers will be skipped due to 0.35 in. of rainfall around the scheduled time.



Figure 7: Smart weather adaptation feature, showing rain skip notifications.

4.3 Voice Control

The MST100 is compatible with popular voice assistants, allowing for hands-free control.

- **Supported Platforms:** Apple Home (Siri), Amazon Alexa, Google Assistant.
- **Example Commands:** "Alexa, activate the sprinkler timer," "Hey Siri, open the sprinkler timer," "Ok Google, open the sprinkler timer."

Control por Voz

Mando manos libres con Alexa,
Siri y Google.

Alexa, abre el programador de riego.

Oye Siri, abre el programador de riego.

Ok Google, abre el programador de riego.

works with alexa

Works with Apple Home

works with Google Home

Compatible with SmartThings

The image is a composite advertisement for a smart irrigation system. The top half features a man with long brown hair and a beard, sleeping peacefully in a bed with white linens. Sunlight filters through a window behind him, creating a warm, dappled light effect. Overlaid on the right side of the image are three blue speech bubbles containing voice commands in Spanish: 'Alexa, abre el programador de riego.', 'Oye Siri, abre el programador de riego.', and 'Ok Google, abre el programador de riego.'. Below these bubbles are four logos: 'works with alexa', 'Works with Apple Home', 'works with Google Home', and 'Compatible with SmartThings'. The bottom half of the image is split into two panels. The left panel shows a close-up of a green and blue sprinkler head in a lush green lawn, with water spraying out in a circular pattern. The right panel shows a white, rectangular smart irrigation controller with a green LED light, mounted on a wall next to a green pipe and a brass-colored valve handle.

Figure 8: Voice control integration with smart home platforms.

4.4 Water Consumption Tracking

The Meross app provides detailed insights into your water usage, helping you manage resources efficiently.

- **Monitoring:** Track daily, weekly, and monthly water consumption in liters/gallons.
- **Cost Analysis:** Monitor estimated costs associated with your water usage.

I Seguimiento de Consumo

Monitoriza el uso de agua con la app Meross para ahorrar recursos.



Figure 9: Water consumption and cost tracking in the Meross app.

4.5 Wide Compatibility

The MST100 is versatile and can be integrated into various outdoor watering setups.

- Works with standard sprinklers.
- Suitable for drip irrigation systems.
- Can be used for pool filling or garden irrigation.



Figure 10: The MST100 is compatible with various irrigation systems.

5. MAINTENANCE

5.1 General Care

- Keep the device clean and free from debris.
- Avoid exposing the device to extreme temperatures outside its operating range.

- Ensure the battery compartment is securely closed to maintain its waterproof seal.

5.2 Battery Replacement

When the battery level is low, the Meross app will notify you. To replace the batteries:

1. Carefully open the battery compartment using a screwdriver.
2. Remove the old 4 x AA 1.5V batteries.
3. Insert new 4 x AA 1.5V batteries, ensuring correct polarity.
4. Securely close the battery compartment to maintain the waterproof seal.

5.3 Winterization

Before the first frost, it is recommended to disconnect the MST100 from the outdoor faucet and store it indoors in a dry, protected area to prevent damage from freezing temperatures.

6. TROUBLESHOOTING

If you encounter issues with your Meross MST100, consider the following:

- **Device Not Responding:** Check the battery level in the Meross app. Replace batteries if low. Ensure the device is within range of the Meross Smart Hub (up to 100m unobstructed).
- **Watering Not Starting:** Verify that the faucet is turned on. Check your schedule in the Meross app for any conflicts or if a rain skip event is active. Ensure the device is properly paired with the hub.
- **Connection Issues:** Confirm your Meross Smart Hub is connected to a stable 2.4GHz WiFi network. Restart the hub and the sprinkler timer if necessary.
- **Leakage:** Ensure all connections to the faucet and hose are tight and properly sealed. Check for any damage to the brass connections.
- **App Notifications:** The Meross app provides real-time notifications for various events, including low battery, flow anomalies, and device failures. Check the app for specific alerts.

7. SPECIFICATIONS

Model Number	MST100
Dimensions	9.9 x 5.6 x 15.2 cm
Weight	780 g
Power Source	4 x AA 1.5V Batteries
Wireless Connectivity	Requires Meross Smart Hub MSH400HK (2.4GHz WiFi)
Hub Range	Up to 100m (unobstructed)
Operating Temperature	Refer to product packaging for specific range

8. WARRANTY INFORMATION






Meross products are designed and manufactured to the highest quality standards. For detailed warranty information, please refer to the warranty card included with your product or visit the official Meross website. The warranty typically covers defects in materials and workmanship under normal use for a specified period from the date of purchase.

9. SUPPORT

For further assistance, technical support, or to provide feedback, please contact Meross customer service through the following channels:

- **Meross App:** Access the 'Help' or 'Support' section within the Meross application for FAQs and direct contact options.
- **Official Website:** Visit www.meross.com for product information, support resources, and contact details.
- **Email Support:** Refer to your product packaging or the Meross website for the dedicated support email address.

Related Documents - MST100

	<p>Meross MST100 Smart Sprinkler Timer User Manual</p> <p>User manual for the Meross MST100 Smart Sprinkler Timer, detailing its features, installation, setup, operation, specifications, and troubleshooting. Includes safety information and compliance statements.</p>
	<p>Meross MST100 Smart Sprinkler Timer User Manual</p> <p>Comprehensive user manual for the Meross MST100 Smart Sprinkler Timer, covering safety information, package contents, device setup, usage instructions, app features, FAQ, specifications, warranty, and compliance statements.</p>
	<p>Meross MST100 Smart Sprinkler Timer User Manual</p> <p>Comprehensive user manual for the Meross MST100 Smart Sprinkler Timer, covering safety information, package contents, setup, installation, usage, device settings, FAQ, specifications, warranty, and compliance statements.</p>
	<p>Meross Smart Plug Quick Start Guide - Setup, Safety, and Warranty</p> <p>This guide provides instructions for setting up your Meross smart plug using the Meross app, covering installation, safety information, warranty, support, and compliance details.</p>
	<p>Meross Matter WiFi Roller Shutter Switch User Guide</p> <p>This guide provides safety information and instructions for the Meross Matter WiFi Roller Shutter Switch, compatible with Apple HomeKit, Siri, Alexa, Google Assistant, and SmartThings.</p>

meross

User Manual

[Meross MSL120 Smart Bulb: User Manual & Setup Guide](#)

Comprehensive user manual for the Meross MSL120 smart bulb, covering safety, quick installation, app setup (Android & iOS, HomeKit), LED rules, voice control (Alexa, Google Assistant, Siri), FAQ, and warranty information.