

Samsung AR50F18D13HNNA

Samsung 1.5 Ton 3 Star AI Inverter Smart Split AC User Manual

Model: AR50F18D13HNNA

1. Product Overview

The Samsung 1.5 Ton 3 Star AI Inverter Smart Split AC (Model AR50F18D13HNNA) is designed to provide efficient and intelligent cooling for medium-sized rooms (120 to 150 sq ft). This unit features advanced AI capabilities for energy saving and smart control, ensuring optimal comfort and convenience.

KEY FEATURES

- **BESPOKE AI:** Smart and powerful air conditioning with Wi-Fi and voice control.
- **AI Energy Mode:** Offers up to 30% additional energy savings by intelligently optimizing operation.
- **5 Step Convertible Cooling:** Adjusts cooling capacity to suit different occupancy levels and preferences.
- **4 Way Swing:** Ensures uniform cooling distribution across the room.
- **Smart Control:** Wi-Fi enabled with voice control compatibility (Alexa, Google Assistant, Bixby) and SmartThings app integration.
- **Digital Inverter Compressor:** Provides efficient, quiet, and durable performance.
- **Durafin Ultra & Coated Copper Tubes:** Enhanced durability and corrosion resistance for the condenser coil.
- **Triple Protection Plus:** Guards against power surges and extreme temperatures.
- **3 Step Auto Clean:** Automatically dries the heat exchanger to prevent bacteria and odor buildup.
- **Antimicrobial Air Filter:** Helps maintain cleaner air quality.
- **R32 Refrigerant:** Environmentally friendly with low global warming potential.

Complete Peace of Mind



5 YEAR
COMPREHENSIVE
PROTECTION

10 YEARS ON
DIGITAL INVERTER
COMPRESSOR

*Comprehensive Protection valid for condenser, PCB, evaporator coil, fan motor, gas recharge (only when condenser is getting replaced.)
*10 Year Protection on Samsung Digital Inverter compressor

Image: Overview of Samsung AC key features including BESPOKE AI, 5-year warranty, SmartThings, AI Energy Mode, 4 Way Swing, and 5200W cooling capacity.

2. Setup and Installation

This section provides guidance for the initial setup of your Samsung Split AC. Professional installation by a qualified technician is highly recommended to ensure proper functioning and safety.

PACKAGE CONTENTS

Before installation, verify that all components are present:

- 1 Indoor Unit
- 1 Outdoor Unit
- 1 Remote Control
- 1 Connecting Wire (3.5m)
- Copper Pipe/Copper Tube (3m)

- 1 Warranty Card
- 1 User Manual (this document)
- 2 Batteries for Remote Control

INSTALLATION GUIDELINES

1. **Site Selection:** Choose appropriate locations for both the indoor and outdoor units, ensuring adequate space for airflow and maintenance. The indoor unit should be positioned for optimal air distribution, and the outdoor unit should be in a well-ventilated area, away from direct sunlight or obstructions.
2. **Mounting:** Securely mount the indoor unit on a wall and the outdoor unit on a stable surface or wall bracket, following the manufacturer's specifications.
3. **Piping and Wiring:** Connect the copper refrigerant pipes and electrical wiring between the indoor and outdoor units. Ensure all connections are tight and properly insulated.
4. **Drainage:** Install the drain hose from the indoor unit to ensure proper condensate removal.
5. **Power Connection:** Connect the AC to a dedicated power outlet with the correct voltage (230 Volts) and proper grounding.
6. **Leak Test and Vacuuming:** After connections, perform a leak test on the refrigerant lines and vacuum the system to remove any moisture and non-condensable gases.
7. **Test Run:** Conduct a test run to confirm all functions are operating correctly and the unit is cooling effectively.

Note: Improper installation can lead to reduced performance, energy inefficiency, and potential safety hazards. Always consult a certified technician for installation.

3. Operating Instructions

This section details how to operate your Samsung AI Inverter Smart Split AC using the remote control, SmartThings app, and voice commands.

REMOTE CONTROL OPERATION

Insert the two provided batteries into the remote control. Point the remote control towards the indoor unit when operating.

- **Power Button:** Turns the AC unit On/Off.
- **Mode Selection:** Cycle through cooling, fan, dry, and auto modes.
- **Temperature Adjustment:** Use the Up/Down arrows to set the desired temperature.
- **Fan Speed:** Adjust the fan speed (Auto, Low, Medium, High).
- **Swing Function:** Activate or deactivate the 4 Way Swing for horizontal and vertical airflow.
- **AI Energy Mode:** Press the dedicated button to activate the AI Energy Mode for optimized power consumption.
- **5 Step Convertible Mode:** Select from various power output levels (40%, 60%, 80%, 100%, 120%) to match your cooling needs.

SMARTTHINGS APP AND VOICE CONTROL

Your AC is Wi-Fi enabled and can be controlled via the Samsung SmartThings app or voice assistants.

1. **SmartThings App Setup:**
 - Download the Samsung SmartThings app on your smartphone (available for Android and iOS).

- Create or log in to your Samsung account.
- Follow the in-app instructions to add your AC unit to your SmartThings ecosystem. This typically involves connecting the AC to your home Wi-Fi network.

2. App Features:

- Remote control of all AC functions from anywhere.
- Monitoring of energy consumption and usage patterns.
- Scheduling and automation of cooling cycles.
- AI Diagnosis for self-checking and troubleshooting.
- Welcome Cooling & Away Care: Uses location services to automatically adjust cooling as you approach or leave home.

3. Voice Control:

- Once connected to SmartThings, link your Samsung account to Amazon Alexa, Google Assistant, or Bixby.
- Use voice commands to control basic functions like turning the AC on/off, adjusting temperature, and changing modes.

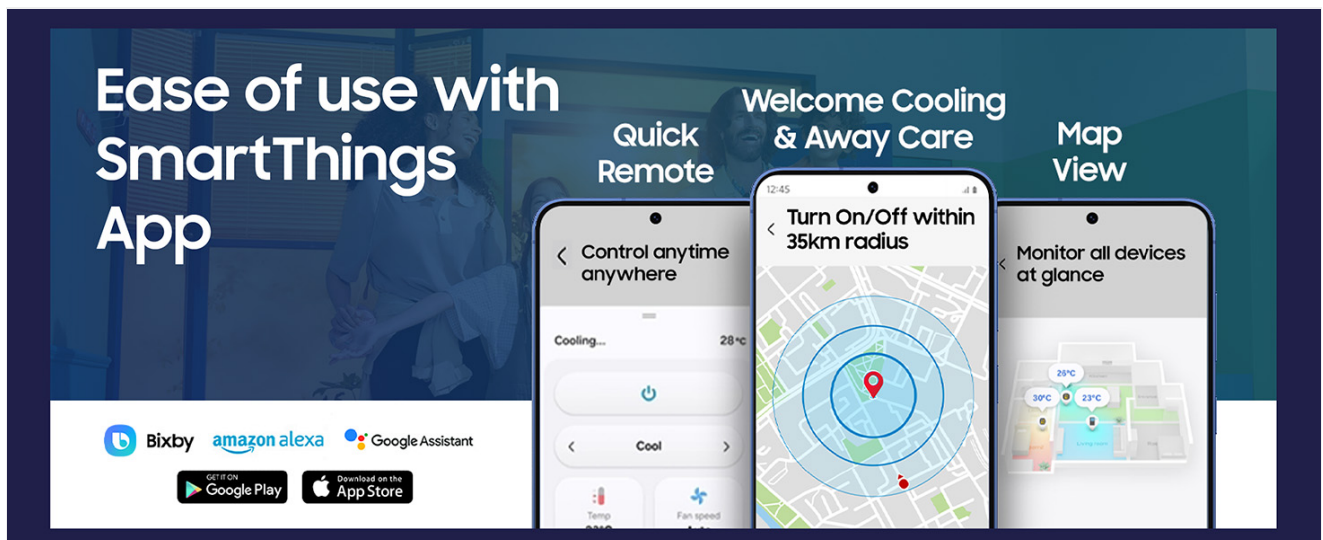


Image: Screenshots of the Samsung SmartThings app showing remote control, Welcome Cooling, and device monitoring features, compatible with Google Assistant, Amazon Alexa, and Bixby.

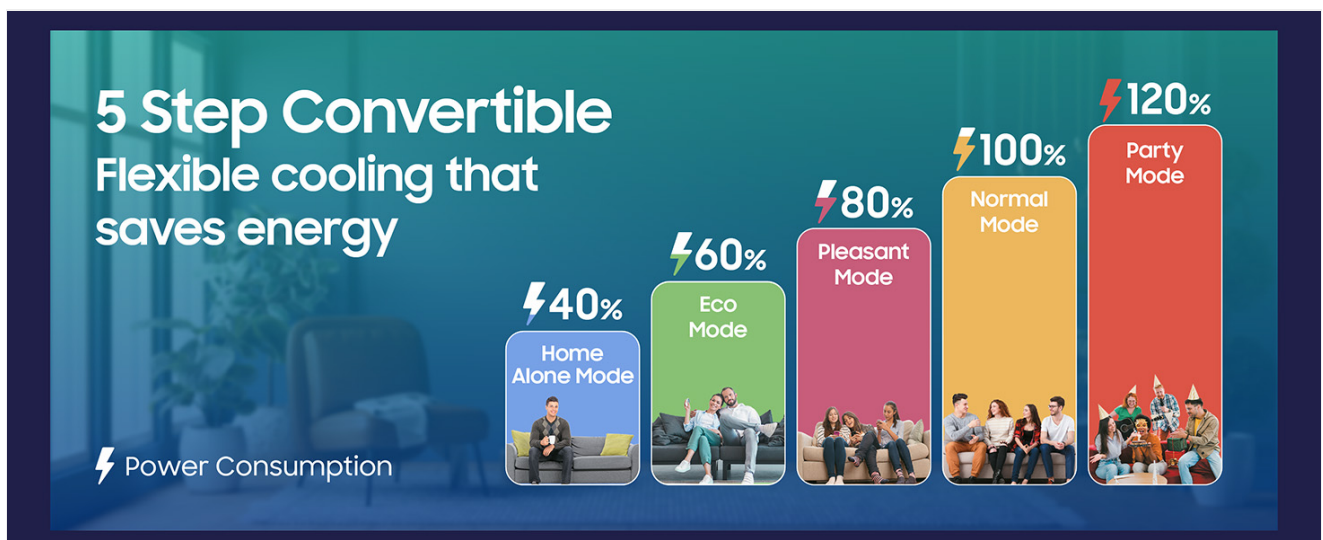


Image: Diagram illustrating the 5 Step Convertible Cooling modes, showing different power output levels (40%, 60%, 80%, 100%, 120%) suitable for varying numbers of people.

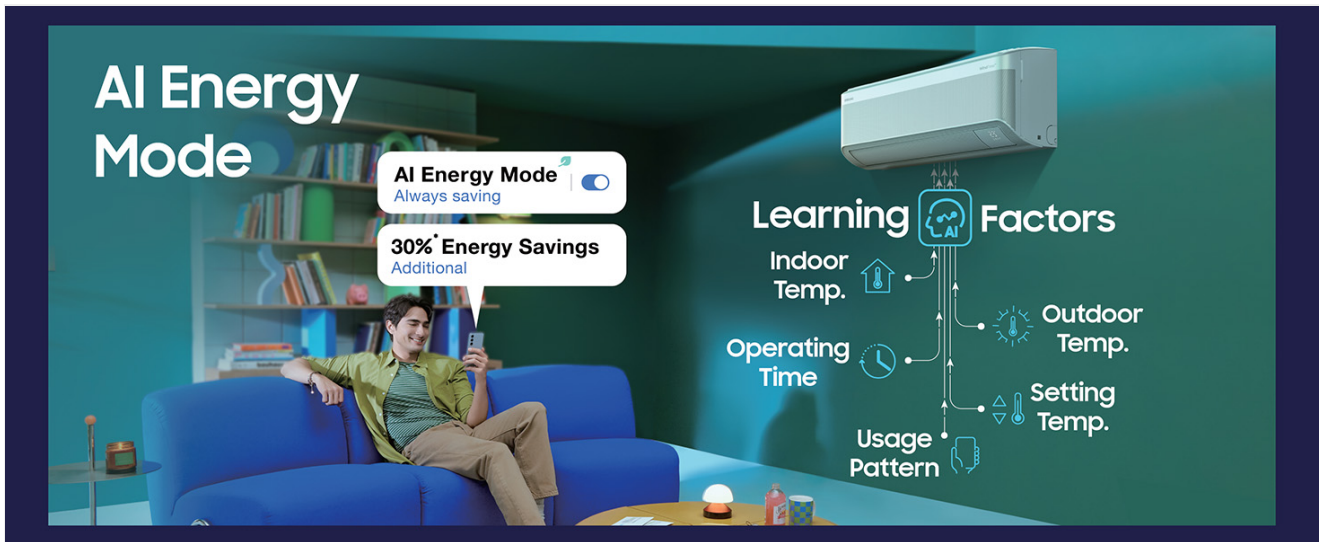


Image: Visual explanation of the AI Energy Mode, detailing learning factors like operating time, setting temperature, outdoor temperature, indoor temperature, and usage pattern to achieve 30% additional energy savings.

4. Maintenance

Regular maintenance ensures optimal performance, energy efficiency, and longevity of your Samsung AC unit.

INDOOR UNIT MAINTENANCE

- **Air Filter Cleaning:** The antimicrobial air filter should be cleaned regularly (every 2-4 weeks, depending on usage and air quality). Open the front panel of the indoor unit, remove the filter, and clean it with a vacuum cleaner or by washing it with lukewarm water and mild detergent. Allow it to dry completely before reinserting.
- **3 Step Auto Clean:** Utilize the 3 Step Auto Clean function to automatically dry the heat exchanger, preventing mold and bacteria growth and reducing odors. Refer to your remote control or SmartThings app for activating this feature.
- **Unit Surface Cleaning:** Wipe the exterior of the indoor unit with a soft, damp cloth. Do not use harsh chemicals or abrasive cleaners.

OUTDOOR UNIT MAINTENANCE

- **Clear Obstructions:** Ensure the outdoor unit's vents are free from leaves, dust, and other debris. Clear any obstructions around the unit to maintain proper airflow.
- **Coil Cleaning:** Periodically inspect the outdoor coil for dirt buildup. If heavily soiled, professional cleaning is recommended. The Durafin Ultra and Coated Copper Tubes are designed for enhanced durability and corrosion resistance, reducing the need for frequent deep cleaning.
- **Drainage:** Check the outdoor unit's drainage for any blockages.

PROFESSIONAL SERVICING

It is recommended to have your AC unit professionally serviced at least once a year by a qualified technician. This includes checking refrigerant levels, electrical connections, and overall system performance.

5. Troubleshooting

This section addresses common issues you might encounter with your Samsung AC. For more complex problems, contact customer support.

COMMON ISSUES AND SOLUTIONS

Problem	Possible Cause	Solution
AC not turning on	No power, remote control batteries dead, circuit breaker tripped.	Check power supply, replace remote batteries, reset circuit breaker.
Insufficient cooling	Dirty air filter, blocked outdoor unit, wrong mode selected, room size too large, low refrigerant.	Clean air filter, clear outdoor unit, select cooling mode, ensure room size is within capacity, contact service for refrigerant check.
Unusual noise	Loose parts, fan obstruction, compressor issue.	Check for loose panels, clear obstructions, if noise persists, contact service.
Water leakage from indoor unit	Blocked drain pipe, improper installation.	Clear drain pipe, ensure proper slope, contact installer if issue persists.
Remote control not working	Dead batteries, obstruction between remote and AC, remote malfunction.	Replace batteries, remove obstructions, try SmartThings app control, contact service if remote is faulty.
Wi-Fi connectivity issues	Router issues, incorrect Wi-Fi password, AC too far from router.	Restart router, re-enter Wi-Fi password in SmartThings app, ensure AC is within Wi-Fi range.

AUTO ERROR DIAGNOSIS

The Samsung AC features an Auto Error Diagnosis system. If an error occurs, a code may be displayed on the indoor unit or within the SmartThings app. Refer to the app or contact customer support with the error code for specific guidance.

6. Specifications

Detailed technical specifications for the Samsung 1.5 Ton 3 Star AI Inverter Smart Split AC (Model AR50F18D13HNNA).

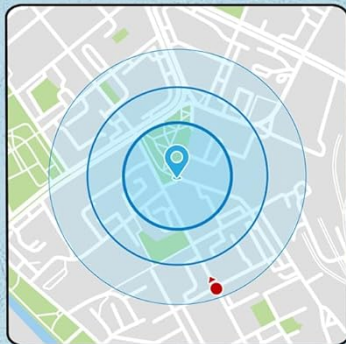
Feature	Specification
Brand	Samsung
Model Number	AR50F18D13HNNA
Capacity	1.5 Tons
Cooling Power	4.4 Kilowatts
Energy Rating	3 Star BEE Rating

Feature	Specification
ISEER Rating	4.00 W/W
Annual Energy Consumption	852.47 Kilowatt Hours Per Year
Indoor Unit Dimensions (WxHxD)	820 x 299 x 215 mm (21.5D x 82W x 29.9H Centimeters)
Outdoor Unit Dimensions (WxHxD)	710 x 540 x 220 mm
Indoor Unit Weight	9 kg
Outdoor Unit Weight	21.85 kg
Total Item Weight	30.85 Kilograms
Noise Level	45 Decibels
Refrigerant	R32
Compressor Type	Digital Inverter (Rotary Screw)
Condenser Coil Material	Copper
Filter Type	Antimicrobial Air Filter
Control Method	App, Remote, Voice
Power Source	Corded Electric
Voltage	230 Volts
Wattage	1510 Watts
Applicable Room Area	120 to 150 sq ft (up to 160 Square Feet)

AI SmartThings



Walk in, Feel Cool



Monitor all devices at a glance

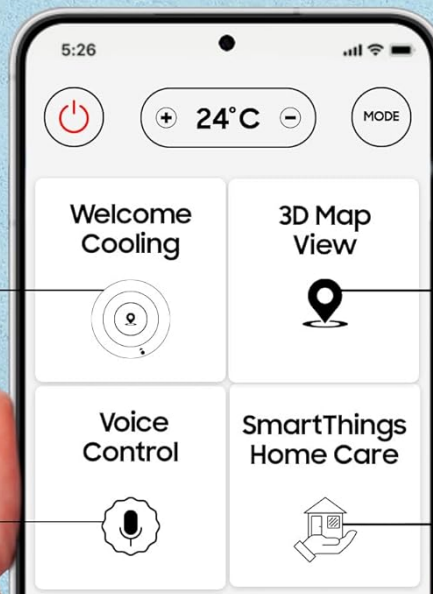


Image: Diagram showing the dimensions of the indoor and outdoor units, along with the energy efficiency label (ISEER 4.00) for the Samsung AC.

7. Warranty and Support

This section provides information regarding the product warranty and how to contact Samsung customer support.

WARRANTY INFORMATION

- **Comprehensive Warranty:** 5 years on the entire unit (valid for condenser, PCB, evaporator coil, fan motor, gas recharge only when condenser is getting replaced).
- **Compressor Warranty:** 10 years on the Digital Inverter Compressor.

Please retain your purchase invoice for warranty claims. Terms and conditions apply.

Durable & Anti-corrosion

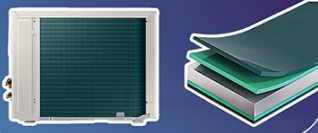
10 Year Compressor Warranty



Triple Protector Plus
Power surge protection



Durafin Ultra
Rust Protection



Coated Copper Tubes
7.5x corrosion resistance



Image: Highlights of the AC's durability features including 10-year compressor warranty, 5-year comprehensive warranty, Triple Protector Plus, Durafin Ultra, and Coated Copper Tubes.

CUSTOMER SUPPORT

For any product-related complaints, assistance, or service requests, please contact Samsung customer care:

- **Toll-Free Telephone:** 1800 40 7267864 (1800 40 SAMSUNG)
- **WhatsApp Support:** 1800-57-267864
- **Email:** support.india@samsung.com

When contacting support, please provide your product's model name (AR50F18D13HNNA) and seller's details as mentioned on your invoice. Samsung's service center will schedule a convenient slot for your service needs.