

[Manuals.plus](#) /

› [Sodola](#) /

› Sodola 10Gbps L3 Managed Switch (8x10G SFP+) Instruction Manual

Sodola SL-SWTGW3C8F

Sodola 10Gbps L3 Managed Switch (8x10G SFP+)

Model: SL-SWTGW3C8F

1. INTRODUCTION

This manual provides detailed instructions for the installation, operation, and maintenance of your Sodola 10Gbps L3 Managed Switch. Please read this manual thoroughly before using the device to ensure proper setup and optimal performance. This switch is designed for high-speed network environments in both home and office settings.

2. PRODUCT OVERVIEW

2.1. Physical Components

The Sodola 10Gbps L3 Managed Switch features 8 SFP+ ports for high-speed connectivity and a console port for management. Key indicators provide status information.

8ポート 10G SFP+ L3管理型スイッチ

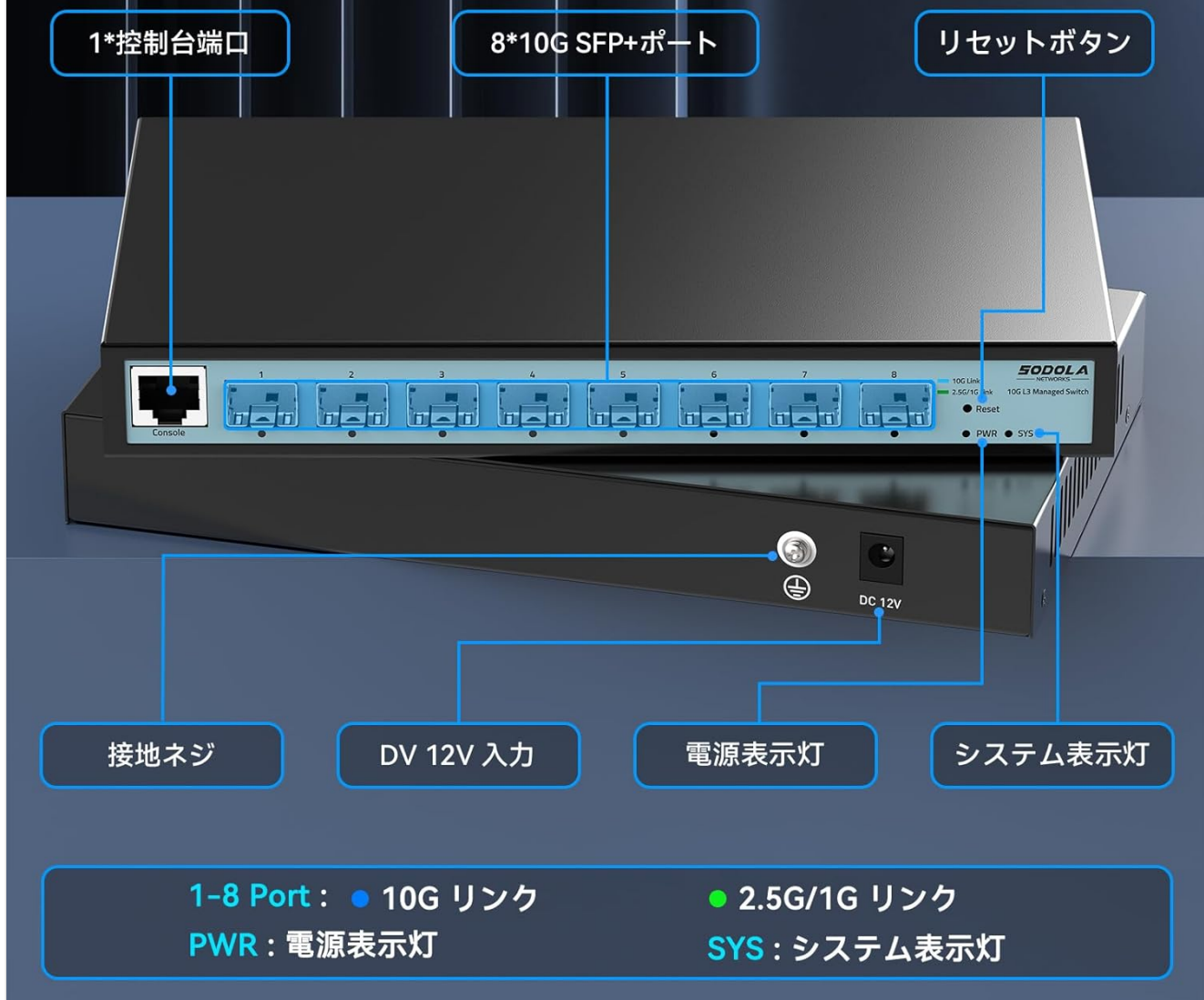


Image 2.1: Front and Rear Panel Overview. This image displays the front panel with 8 SFP+ ports, a console port, and LED indicators. The rear panel shows the DC 12V power input and grounding screw. Labels indicate the function of each component, including the reset button, power indicator (PWR), and system indicator (SYS).

2.2. Key Features

- **8x10Gb SFP+ Ports:** Provides high-density 10G network connectivity with excellent scalability and flexibility.
- **L3 Management:** Offers an intuitive web interface and comprehensive configuration options including Link Aggregation, LACP, Storm Control, Port Mirroring, VLAN Management, MAC Address, Spanning Tree Protocol, Multicast, QoS, DHCP Snooping, SNMP, and RSTP.
- **160G Backplane Bandwidth:** Capable of handling ultra-large traffic loads, ensuring stable network operation even under heavy use.
- **Fanless Design:** Features a built-in fanless double-sided heat dissipation design for quiet operation.
- **Wall-Mountable:** Supports flexible installation options for desktop or wall-mounting.
- **6KV Surge Protection:** Integrated circuit for enhanced reliability during lightning events.

3. PACKAGE CONTENTS

Please verify that all items are present in the package:

- Sodola 10Gbps L3 Managed Switch (Model: SL-SWTGW3C8F)
- Power Adapter (12V 2A)
- Console Cable
- Foot Pads (4 pcs)
- Instruction Manual

Important Note: SFP+ modules are NOT included and must be purchased separately.

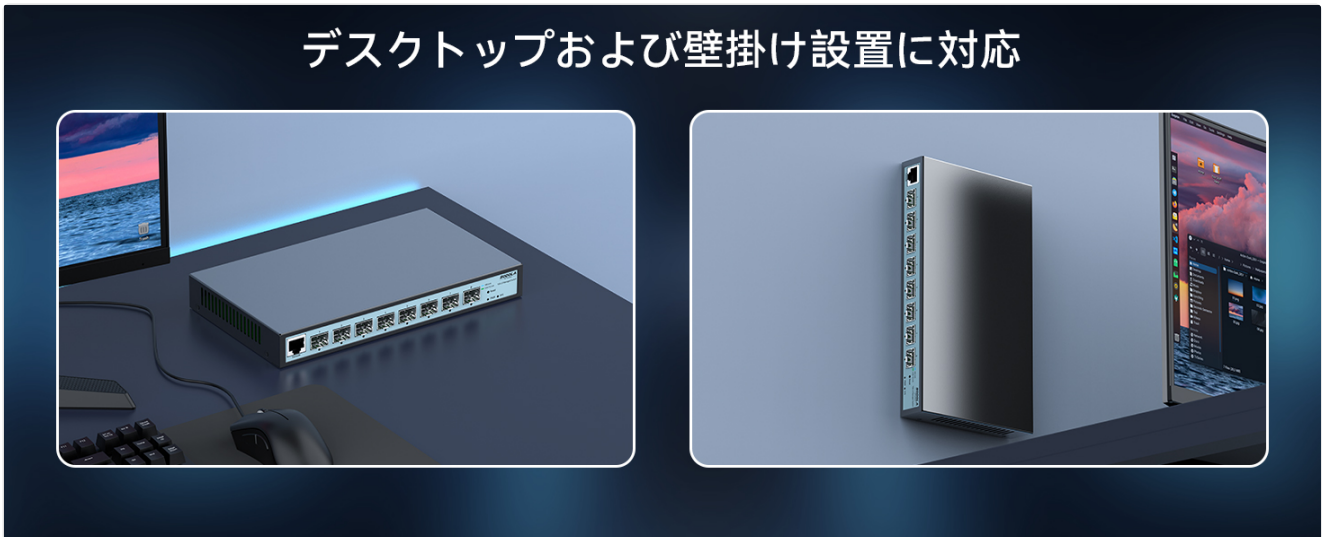


Image 3.1: Package Contents and Installation Options. This image shows the switch, power adapter, console cable, foot pads, and manual. It also illustrates the switch dimensions and its suitability for both desktop and wall-mount installations.

4. HARDWARE INSTALLATION

4.1. Placement

The switch can be placed on a desktop or mounted on a wall. Ensure adequate ventilation around the device, as it uses a fanless heat dissipation design.

4.2. Connecting SFP+ Modules

Insert compatible SFP+ modules (1G, 2.5G, or 10G) into the SFP+ ports. If using RJ45 (copper cable) connections, a compatible 10G SFP+ to RJ45 converter module is required.

すべての10Gb高速SFP+ポート



適応型 1G/2.5G/10G 光ファイバー モジュール

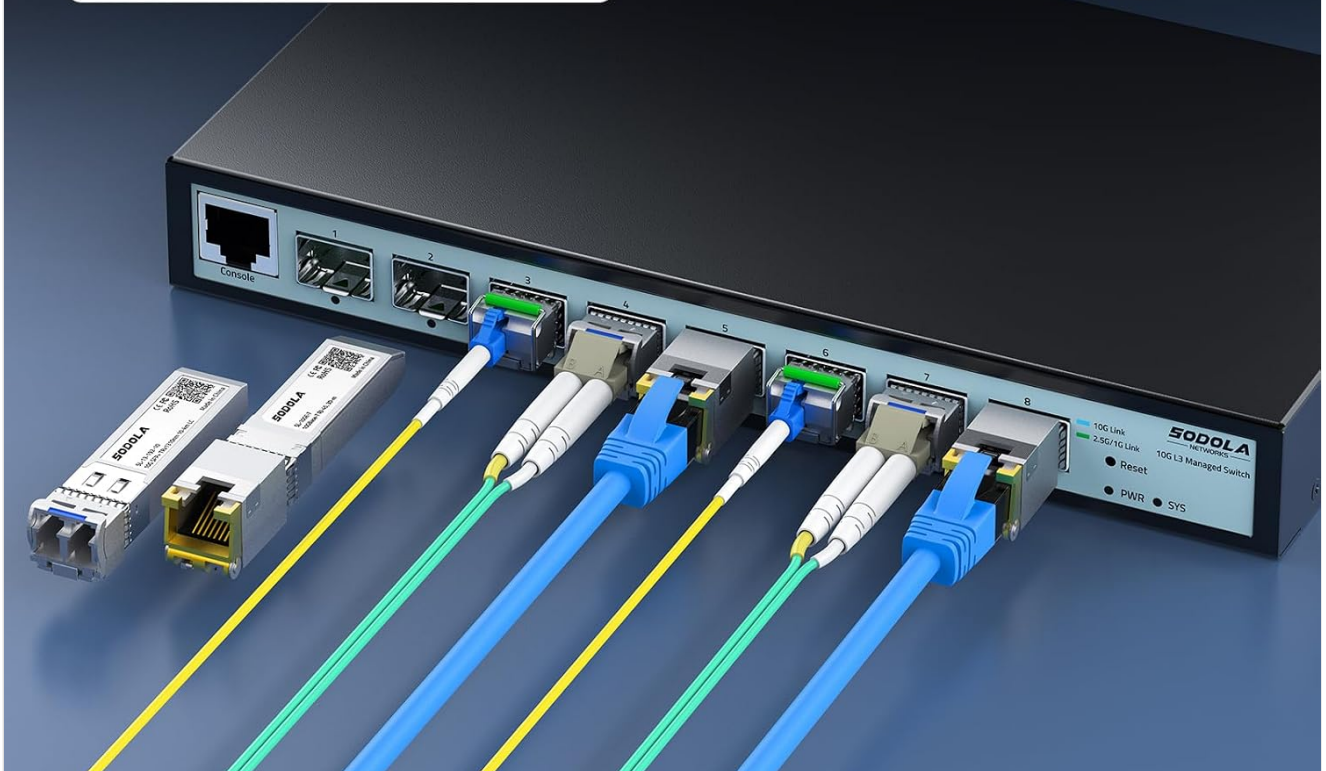


Image 4.1: SFP+ Port Connectivity. This image illustrates the 8 SFP+ ports and shows examples of 1G, 2.5G, and 10G fiber modules that can be used. It emphasizes that these modules are not included with the switch.

4.3. Power Connection

1. Connect the power adapter to the DC 12V input port on the switch.
2. Plug the power adapter into a suitable power outlet.
3. Ensure the grounding screw is properly connected for safety.

5. INITIAL CONFIGURATION

5.1. Setting IP Address

Before connecting the switch, you must first set an IP address on your computer to match the switch's subnet.

1. Clear your browser's cache.
2. Adjust your network settings.
3. Set your PC's IP address to match the switch's subnet (e.g., if the switch's default IP is 192.168.2.1, set your

PC's IP to 192.168.2.x, where x is not 1).

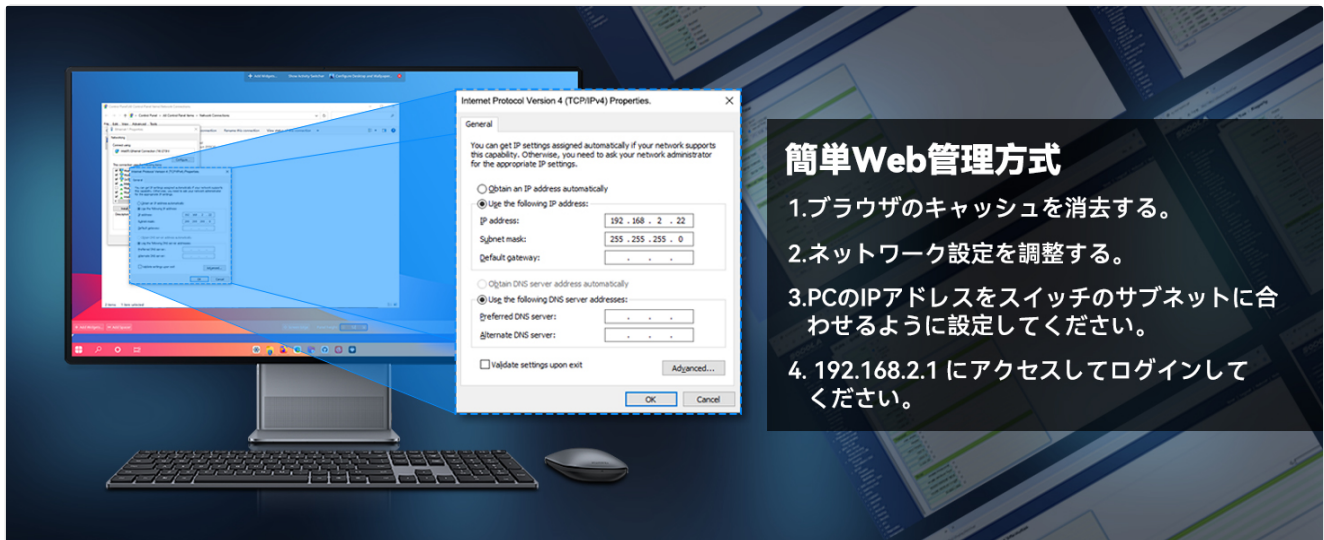


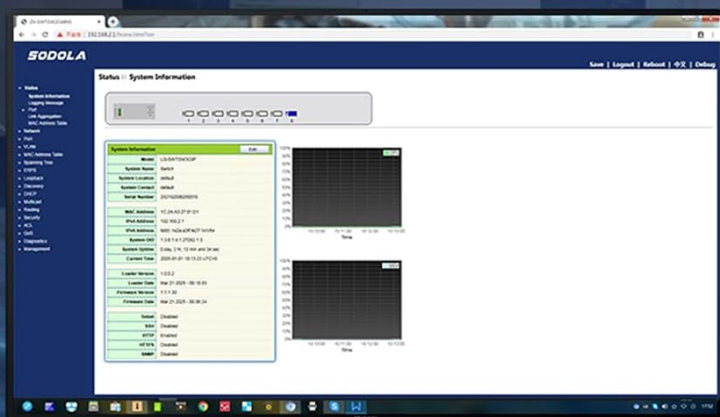
Image 5.1: Simple Web Management Access. This image illustrates the steps to prepare your computer for accessing the switch's web interface, including setting a compatible IP address.

5.2. Accessing the Web Interface

1. Open a web browser on your computer.
2. Enter the default IP address: **192.168.2.1**
3. Log in using the default credentials:
Username: admin
Password: admin

柔軟な管理と運用

サポートコンソール、HTTP/HTTPS、TELNET、SSH、
SNMP その他の管理方法



WEBインターフェース

デフォルトIP: 192.168.2.1
ユーザー名: admin
パスワード: admin

Layer 3



Image 5.2: Web Interface Login. This image shows the default IP address, username, and password for accessing the switch's web management interface.

6. OPERATING THE SWITCH

6.1. LED Indicators

- **PWR (Power Indicator):** Indicates power status.
- **SYS (System Indicator):** Indicates system status.
- **Port Link/Activity LEDs:** Indicate link status and data activity for each SFP+ port.

6.2. Port Speed Configuration

The default port speed is 10G/2.5G auto-negotiation. When connecting 1G devices, you must manually set the port to 10G/1G mode via the management interface.

1. Log in to the web management interface.
2. Navigate to the port settings.
3. Select the desired speed (e.g., 10G/1G) and click "Apply".

4. Save the applied settings.
5. Reboot the switch for changes to take effect.

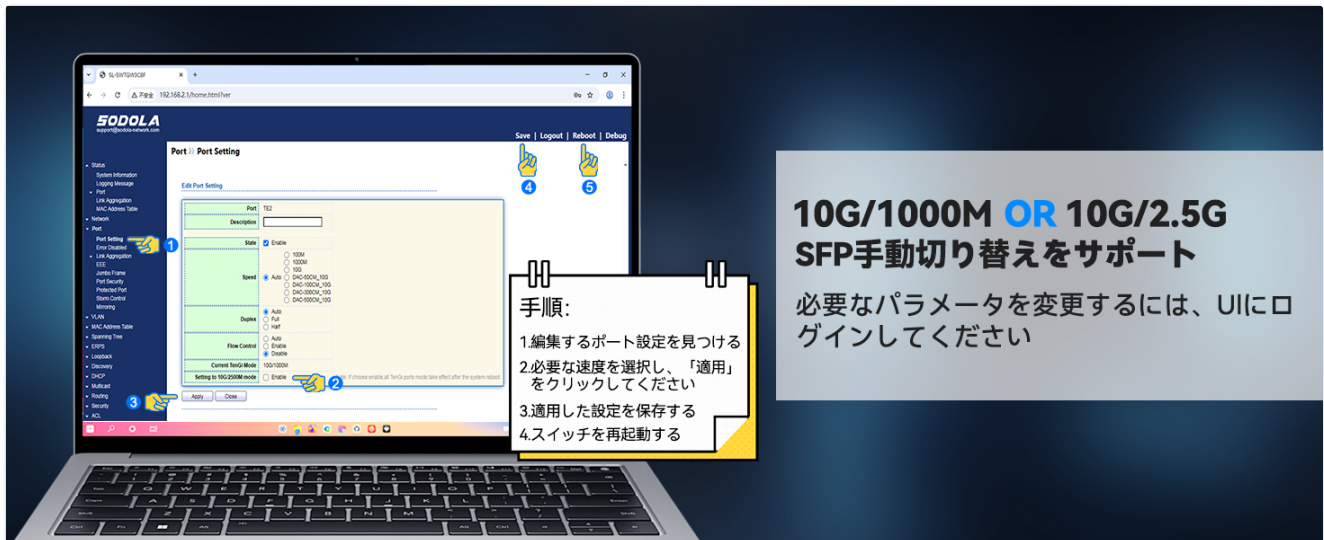


Image 6.1: Manual SFP Speed Setting. This image shows the web interface for configuring port speeds, allowing selection between 10G/1000M or 10G/2.5G modes.



Image 6.2: Saving Configuration. This image highlights the importance of saving settings after making adjustments in the web interface.

7. ADVANCED CONFIGURATION (L3 MANAGEMENT)

The Sodola L3 Managed Switch offers a wide range of advanced features accessible through its web management interface. These features enable robust network control and optimization.

L3管理型イーサネットスイッチ (強力なソフトウェア機能搭載)

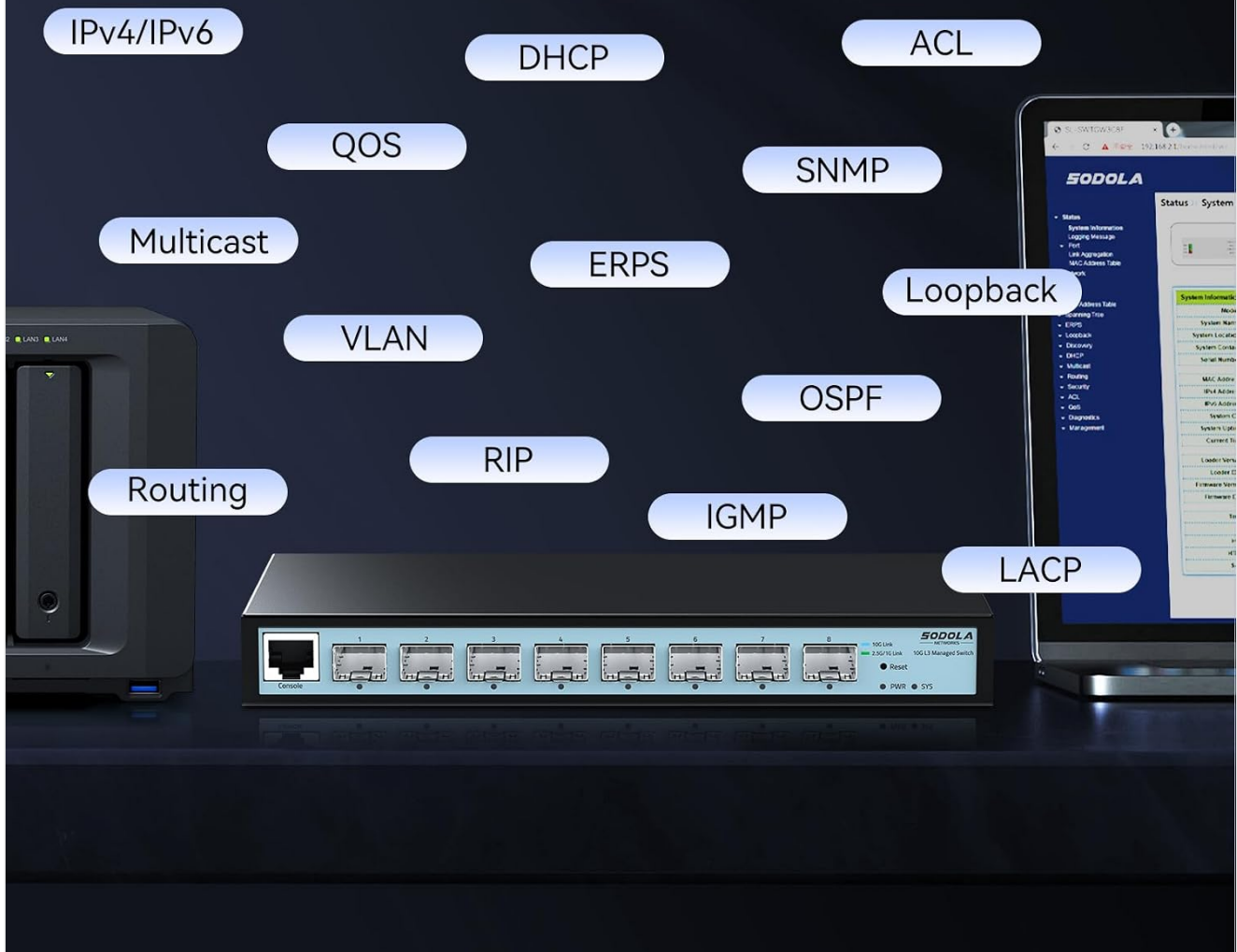


Image 7.1: L3 Management Capabilities. This image displays a range of L3 management features supported by the switch, including IPv4/IPv6, DHCP, ACL, QoS, SNMP, Multicast, VLAN, Routing, RIP, OSPF, IGMP, and LACP.

7.1. Security Features

The switch includes comprehensive security measures to protect your network:

- **Quadruple Binding:** Enhances network security by binding IP, MAC, VLAN, and Port.
- **ARP Protection:** Defends against ARP spoofing attacks.
- **IP Source Guard:** Prevents unauthorized IP addresses from accessing the network.
- **DoS Defense:** Protects against Denial of Service attacks.
- **802.1X Authentication:** Provides port-based network access control.
- **DHCP Snooping:** Filters untrusted DHCP messages.

総合的な安全保護

四重結合

ARP保護

IP
ソースガード

DoS防御

802.1X認証

DHCP
スヌーピング



Image 7.2: Comprehensive Security Protection. This image visually represents the various security features of the switch, such as Quadruple Binding, ARP Protection, IP Source Guard, DoS Defense, 802.1X Authentication, and DHCP Snooping.

8. MAINTENANCE

8.1. General Care

- Keep the device in a clean, dry environment.
- Avoid exposing the switch to extreme temperatures or humidity.
- Do not block the ventilation holes on the sides of the switch.
- Clean the exterior with a soft, dry cloth. Do not use liquid cleaners.

8.2. Firmware Updates

Periodically check the manufacturer's website for firmware updates to ensure optimal performance and access to new features. Follow the instructions provided with the firmware update package carefully.

9. TROUBLESHOOTING

If you encounter issues with your switch, refer to the following common problems and solutions:

Problem	Possible Cause	Solution
No power/PWR LED off	Power adapter not connected or faulty.	Check power connections. Ensure the power adapter is working.
No link on SFP+ port	Incorrect SFP module, faulty cable, or incorrect speed setting.	Ensure SFP module is compatible and correctly inserted. Check fiber/copper cable. Verify port speed setting in web interface.
Cannot access web interface	Incorrect IP address on PC, wrong default gateway, or browser cache issue.	Verify PC's IP address is in the same subnet as the switch (192.168.2.x). Clear browser cache. Try a different browser.
Slow network performance	High network traffic, incorrect port speed, or faulty SFP module/cable.	Check network utilization. Ensure port speeds are correctly configured for connected devices. Inspect cables and SFP modules.

10. SPECIFICATIONS

Detailed technical specifications for the Sodola 10Gbps L3 Managed Switch (Model: SL-SWTGW3C8F):



モデル: SL-SWTGW3C8F
インターフェース: 8*10G SFP+
スイッチング容量: 160Gbps
パケット転送率: 119.04Mpps
パケットバッファ: 12Mbit
MACアドレステーブル: 16K
ジャンボフレーム: 10K
サージ保護: 6KV
電源: 12V 2A
無負荷電力: 3.7W
動作温度: 0~40°C

箱の中身は何ですか

SL-SWTGW3C8F 電源アダプター×1 コンソールケーブル×1 足置き×4 製品マニュアル×1

Image 10.1: Product Specifications. This image provides a summary of the switch's technical details, including model, interface, switching capacity, packet forwarding rate, buffer, MAC address table size, jumbo frame support, surge protection, power, no-load power, and operating temperature.

- **Model:** SL-SWTGW3C8F
- **Interface:** 8x10G SFP+ Ports
- **Switching Capacity:** 160Gbps
- **Packet Forwarding Rate:** 119.04Mpps
- **Packet Buffer:** 12Mbit
- **MAC Address Table:** 16K
- **Jumbo Frame:** 10K
- **Surge Protection:** 6KV
- **Power Input:** DC 12V 2A

- **No-load Power Consumption:** 3.7W
- **Operating Temperature:** 0~40°C (32~104°F)
- **Storage Temperature:** -40~70°C (-40~158°F)
- **Operating Humidity:** 10%~90% non-condensing
- **Storage Humidity:** 5%~90% non-condensing
- **Compatible Devices:** Desktop computers, laptops, routers, NAS
- **Color:** Black

11. WARRANTY AND SUPPORT

11.1. Warranty Information

This Sodola product comes with a **1-year warranty** from the date of purchase. The warranty covers defects in materials and workmanship under normal use. It does not cover damage caused by misuse, accidents, unauthorized modifications, or external factors.

11.2. Technical Support

For technical assistance, troubleshooting, or warranty claims, please contact Sodola Networks customer support. Refer to the contact information provided on the official Sodola website or your purchase documentation.