

## WOLFANG WT03S

# WOLFANG WT03S Solar Trail Camera User Manual

Comprehensive instructions for setup, operation, and maintenance.

## 1. INTRODUCTION

Thank you for choosing the WOLFANG WT03S Solar Trail Camera. This manual provides detailed instructions to help you set up, operate, and maintain your camera effectively. Please read this manual thoroughly before use to ensure optimal performance and longevity of your device.



**Figure 1.1:** WOLFANG WT03S Solar Trail Camera. This image displays the front view of the camera, featuring its camouflage casing, integrated solar panel on top, lens, and motion sensor.

## 2. PRODUCT OVERVIEW AND KEY FEATURES

The WOLFANG WT03S is a high-performance trail camera designed for wildlife monitoring and outdoor surveillance. It combines advanced imaging capabilities with convenient connectivity and robust durability.

- **High Resolution Imaging:** Captures 68MP still images and records 4K video at 30 frames per second, ensuring clear and detailed footage.
- **Advanced Night Vision:** Equipped with two 850nm low-glow infrared LEDs, providing clear night vision up to 20 meters without disturbing wildlife.
- **Ultra-Fast Trigger Speed:** Features a rapid 0.1-second trigger speed and a 3-frame burst shot capability to capture fast-moving subjects.
- **Dual Power System:** Includes an integrated 5200mAh rechargeable battery powered by a top-mounted solar panel. Supports optional 4x AA batteries for extended operation, especially in low-light conditions or cold temperatures.
- **Wi-Fi and App Control:** Allows direct connection to your smartphone via Wi-Fi (within 10 meters) and



Bluetooth for easy settings adjustment, live viewing, and file download through a dedicated app.

- **Durable and Waterproof:** Designed with an IP66 waterproof rating, protecting the camera from dust and strong jets of water, suitable for various outdoor environments.
- **Ample Storage:** Supports Micro SD cards up to 128GB. A 32GB Micro SD card is included and pre-installed.



**Figure 2.1:** Integrated Solar Panel. This image illustrates the solar panel on top of the camera, highlighting its function in recharging the internal battery.



**Figure 2.2:** Internal Battery and AA Battery Slots. This image shows the camera's interior with the rechargeable lithium battery (A) and slots for optional AA backup batteries (B).

## 3. SETUP GUIDE

---

### 3.1. Unpacking and Initial Inspection

Carefully remove all components from the packaging. Verify that all items are present and undamaged. The package should include the WOLFANG WT03S camera and a 32GB Micro SD card (pre-installed).

### 3.2. Powering the Camera

1. **Internal Battery:** The camera features a built-in 5200mAh rechargeable battery. It is recommended to fully charge the camera via the solar panel or a USB power source before first use.
2. **Optional AA Batteries:** For enhanced performance in cold temperatures or extended standby, insert 4x AA batteries (not included) into the designated slots inside the camera. These act as a backup power source.

### 3.3. Inserting the Micro SD Card

A 32GB Micro SD card is pre-installed. If you need to replace it or use a different one (up to 128GB), ensure the camera is off. Open the camera casing and locate the Micro SD card slot. Insert the card with the gold contacts facing the back of the camera until it clicks into place. To remove, push the card gently until it springs out.

### 3.4. Mounting the Camera

The camera can be mounted using the included strap or a compatible mount. Choose a location that provides a clear view of the desired monitoring area and allows the solar panel to receive adequate sunlight. Ensure the camera is securely fastened to prevent movement.

## 4. OPERATING INSTRUCTIONS

---

### 4.1. Power On/Off and Mode Selection

To power on the camera, slide the power switch to the 'ON' position. The camera will enter setup mode. Use the internal display and control buttons to navigate menus and select operating modes (Photo, Video, Photo+Video).



## 4.2. Wi-Fi and App Connection

The WOLFANG WT03S can be controlled and monitored via a smartphone app. Follow these steps:

1. **Download the App:** Scan the QR code displayed on the camera's screen or inside the manual, or visit [this link](#) to download the official WOLFANG Wildlife Camera App.
2. **Activate Camera Wi-Fi:** In the camera's menu, select the Wi-Fi option to activate its wireless signal.
3. **Connect via Phone:** On your smartphone, disable mobile data. Enable Wi-Fi and Bluetooth. Connect to the camera's Wi-Fi network (usually named 'WILDLIFE CAM' followed by a unique ID).
4. **Launch App:** Open the WOLFANG Wildlife Camera App. You can now adjust settings, view live feed, and download captured media.

*Note: The Wi-Fi connection range is approximately 10 meters. Ensure your phone is within this range for stable connection.*



**Figure 4.1:** Wi-Fi Connection and App Control. This image shows a smartphone displaying the camera's app interface, connected wirelessly to the trail camera mounted on a tree.



**Figure 4.2:** Quick Connection Guide. This diagram illustrates the three steps for connecting the camera to the app: scanning the QR code, adding the camera to the app, and connecting to the camera's Wi-Fi.

### 4.3. Adjusting Settings

Through the camera's internal menu or the smartphone app, you can customize various settings, including:

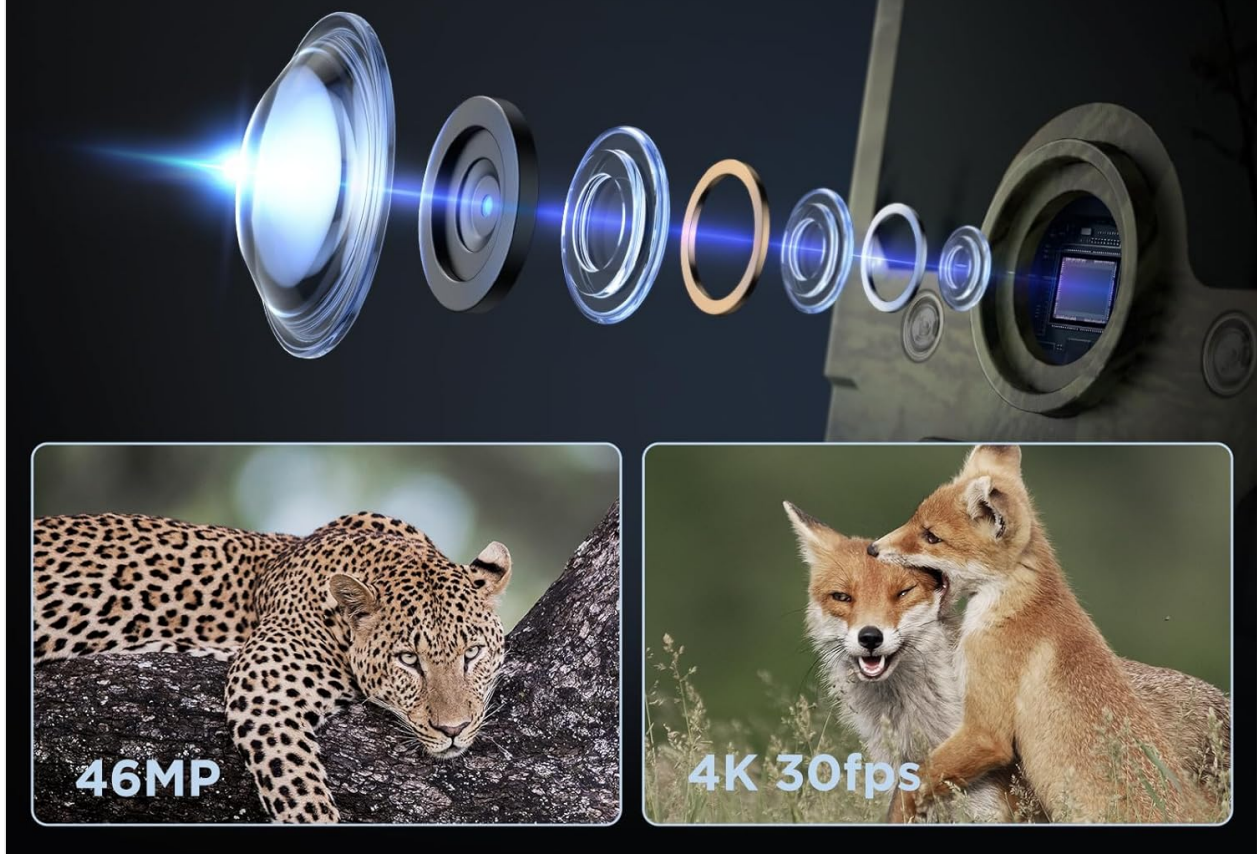
- Photo/Video Resolution
- Trigger Interval
- PIR Sensitivity
- Time Lapse Mode
- Date and Time Stamp
- Loop Recording

### 4.4. Viewing and Downloading Files

Files can be viewed directly on the camera's internal screen, by removing the Micro SD card and inserting it into a computer, or by connecting via the app. The app allows for convenient browsing and downloading of photos and videos to your smartphone.

# 46MP Clearer Image & 4K Native Video Resolution

Recording High Quality and Exciting Visual Details



**Figure 4.3:** High-Quality Imaging. This image highlights the camera's capability to capture 68MP photos and 4K 30fps videos, showing examples of a leopard and foxes.



# Superb Night Vision

Two high-power infrared 850nm IR lamps



**Figure 4.4:** Superb Night Vision. A comparison image demonstrating the clarity of night vision captured by the WOLFANG WT03S using 850nm IR lamps versus other cameras.

## 5. MAINTENANCE

### 5.1. Cleaning

- **Lens and Solar Panel:** Regularly clean the camera lens and solar panel with a soft, dry cloth to ensure optimal image quality and charging efficiency.
- **Casing:** Wipe the camera's exterior with a damp cloth if it becomes dirty. Avoid abrasive cleaners.

### 5.2. Battery Management

- Monitor the battery level via the app or camera display.
- Ensure the solar panel is exposed to sufficient sunlight for continuous charging of the internal battery.
- If using AA batteries, replace them when depleted to maintain backup power.

### 5.3. Waterproof Seal

Periodically check the rubber seals around the camera casing to ensure they are free from debris and properly



sealed. This maintains the IP66 waterproof rating.



**Figure 5.1:** IP66 Waterproofing. This image shows the camera in a rainy environment, demonstrating its sealed, waterproof design.

## 6. TROUBLESHOOTING

- **Camera not powering on:** Ensure the internal battery is charged or that fresh AA batteries are installed. Check the power switch position.
- **Poor image/video quality:** Clean the camera lens. Ensure the camera is stable and not subject to excessive movement. Check lighting conditions.
- **Night vision issues:** Ensure the IR LEDs are not obstructed. Check battery levels, as low power can affect IR performance.
- **Wi-Fi connection unstable or impossible:** Ensure your smartphone is within 10 meters of the camera. Disable mobile data on your phone. Verify that Wi-Fi and Bluetooth are enabled on your phone.
- **Slow file transfer via Wi-Fi:** Transfer speeds can vary, especially for large 4K video files. For faster transfer, remove the Micro SD card and use a card reader on a computer.
- **Camera not detecting motion:** Adjust the PIR sensor sensitivity in the settings. Ensure there are no

obstructions in front of the sensor.

- **Solar panel not charging:** Ensure the solar panel is clean and positioned to receive direct sunlight.

## 7. SPECIFICATIONS

Feature	Specification
Model Name	WT03S
Video Capture Resolution	4K (30fps)
Photo Resolution	68MP
Trigger Speed	0.1 seconds
Night Vision Range	Up to 20 meters (65 feet)
Infrared LEDs	2x 850nm Low-Glow IR LEDs
Connectivity	Wi-Fi, Bluetooth
Power Source	Integrated 5200mAh rechargeable battery (solar charged), Optional 4x AA batteries
Storage	Micro SD card up to 128GB (32GB included)
Waterproof Rating	IP66
Mounting Type	Tree mount
Dimensions (LxWxH)	14.3 x 10.7 x 9.5 cm
Weight	750 g





## 8. WARRANTY AND SUPPORT

WOLFANG provides a **2-year warranty** for the WT03S Solar Trail Camera. For any questions, technical assistance, or warranty claims, please contact our customer support team.

**Official Support Email:** [support.vc@wolfang.co](mailto:support.vc@wolfang.co)

Our team is committed to providing prompt and satisfactory assistance.



	<p><a href="#">WOLFANG WT01 Trail Camera User Manual and Setup Guide</a></p> <p>Comprehensive user manual for the WOLFANG WT01 Trail Camera, providing detailed instructions on setup, operation, battery installation, SD card formatting, and product features. Learn how to maximize your trail camera's performance for outdoor surveillance and wildlife monitoring.</p>
	<p><a href="#">WOLFANG WT01 Trail Camera User Manual</a></p> <p>Comprehensive user manual for the WOLFANG WT01 Trail Camera, covering quick setup, battery and SD card installation, external power, menu settings, operation modes, troubleshooting, and camera mounting. Optimize your wildlife monitoring with this detailed guide.</p>
	<p><a href="#">WOLFANG WT01 Trail Camera User Manual</a></p> <p>Comprehensive user manual for the WOLFANG WT01 Trail Camera, covering product structure, quick start guide, battery and SD card installation, external power supply, operation modes, menu settings, mounting, automatic shooting, and file review. Optimize your WOLFANG WT01 trail camera's performance with this essential guide.</p>
	<p><a href="#">WOLFANG WT05 Trail Camera User Manual</a></p> <p>Comprehensive user manual for the WOLFANG WT05 Trail Camera, detailing setup, components, operation, and troubleshooting. Includes warranty information and contact details.</p>
	<p><a href="#">WOLFANG WT01 Trail Camera User Manual</a></p> <p>Comprehensive user manual for the WOLFANG WT01 Trail Camera, covering setup, operation, settings, and troubleshooting.</p>
	<p><a href="#">WOLFANG WT09 Trail Camera User Manual</a></p> <p>Comprehensive user manual for the WOLFANG WT09 Trail Camera, covering setup, operation, technical specifications, and support information.</p>