



Manuals.plus /

› Blackview /

› Blackview MEGA 8 Android Tablet User Manual

Blackview MEGA 8 (T620)

Blackview MEGA 8 Android Tablet User Manual

Model: T620

PRODUCT OVERVIEW

The Blackview MEGA 8 is a high-performance 13-inch Android tablet designed for a versatile user experience, from entertainment to productivity. It features a large eye-protection screen, powerful octa-core processor, ample storage, and long-lasting battery life, making it suitable for various daily tasks.



Figure 1: Blackview MEGA 8 Tablet with its accessories including the stylus pen, charger, and case.

WHAT'S IN THE BOX

Upon opening your Blackview MEGA 8 package, you should find the following items:

- 13-inch MEGA 8 tablet
- S Pen (Stylus Pen)
- Type-C Data Cable
- 18W Charger
- Ejection pin (for SIM/TF card tray)



Figure 2: All components included in the Blackview MEGA 8 retail package.

For a visual unboxing, please refer to the official product video below:

Your browser does not support the video tag.

Video 1: Official unboxing and overview of the Blackview MEGA 8 tablet, showcasing its design and included accessories.

SETUP GUIDE

1. Initial Charge

Before first use, fully charge your Blackview MEGA 8 tablet using the provided 18W fast charger and Type-C data cable. Connect the cable to the tablet's Type-C port and the charger to a power outlet. The battery icon on the screen will indicate charging status.

From Dawn to Dusk, All day Power with Ease

11000 mAh mega battery long-lasting endurance



Up to 20 hrs
Daily Usage



18W
Fast Charging



AI Super Power
Saving Algorithm

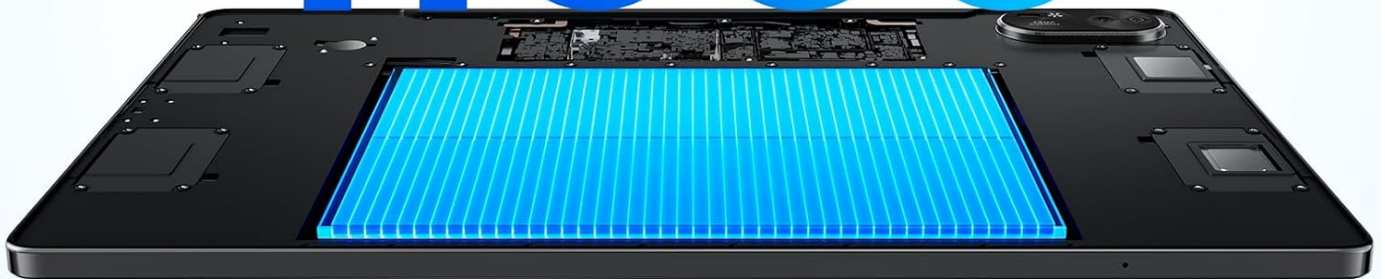


AI Charging
Protection Algorithm



Automatic
Hibernation

11000 mAh



1416 hrs
Standby



33 hrs
Calling



27 hrs
Music



15 hrs
Web



10 hrs
HD Video



11 hrs
Game

*Data was tested in the Blackview lab at 50% brightness and volume. Actual performance may vary depending on environmental factors.

Figure 3: The Blackview MEGA 8 features an 11000mAh battery with 18W fast charging capability.

2. Power On/Off

- **To Power On:** Press and hold the Power Button (located on the top edge) until the Blackview logo appears.
- **To Power Off:** Press and hold the Power Button, then select "Power off" from the options that appear on the screen.

Hi, Doke AI⁺

Doke AI gives you the tools to push creativity to new heights, making it easier than ever to bring your ideas to life

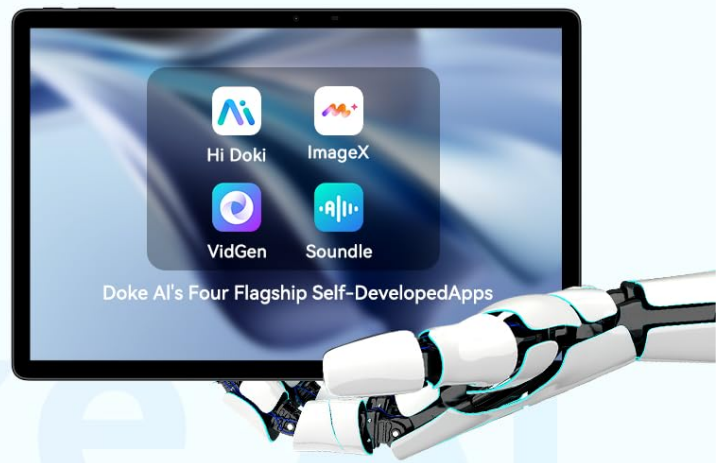


Figure 4: Physical layout of the Blackview MEGA 8, indicating the location of the power button, volume buttons, cameras, and ports.

3. Initial Setup Wizard

Follow the on-screen instructions to complete the initial setup, which includes selecting your language, connecting to Wi-Fi, and signing in with your Google account. This process is essential for accessing the Google Play Store and other Google services.

4. Inserting SIM/TF Card (Optional)

The MEGA 8 supports 4G LTE connectivity and expandable storage via a TF card. Use the provided ejection pin to open the SIM/TF card tray. Insert your Nano-SIM card(s) and/or TF card into the designated slots, ensuring correct orientation. Close the tray securely.

OPERATING INSTRUCTIONS

Display and Navigation

The 13-inch display offers a 1920x1200 resolution and supports Widevine L1 for high-definition streaming. Navigate the tablet using touch gestures:

- **Tap:** Select an item or open an app.
- **Swipe:** Scroll through pages or menus.
- **Pinch-to-zoom:** Zoom in or out on images and web pages.
- **Long press:** Access contextual menus or move app icons.

Immersive Visual Experience

13 inch large screen, 1920*1200 resolution



13% Larger 



vs



Figure 5: The 13-inch display provides an immersive visual experience for media consumption.

Performance and Multitasking

Equipped with an Octa-core Unisoc T620 processor and up to 36GB RAM (12GB physical + 24GB expansion), the MEGA 8 handles multitasking efficiently. You can run multiple applications simultaneously without significant slowdowns.

Easily Handling Multitasking

Octa-core T620 processor, powerful performance



AnTuTu
291,769

12nm
Process Technology



Powerful Cores
2x Cortex-A75

Fluid Visuals
ARM Mali-G57 GPU @850MHz



Energy-Efficient Cores
6x Cortex-A55

Faster Loading
150Mbps Uplink Speed



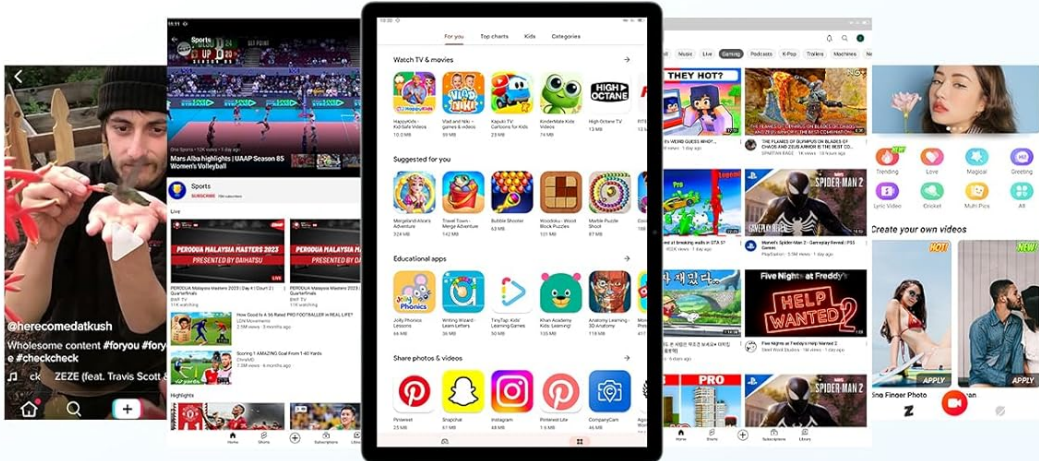
Fewer Lags
300Mbps Downlink Speed



Figure 6: The Unisoc T620 processor ensures smooth performance for various applications.

Up to 36GB(12GB RAM+24GB Expansion)

Work smarter smooth operation



256GB Large Memory, 2TB Expandable Storage

More to store, more to enjoy

 **≈303K+**
Photos

 **≈5.1K+**
Short Videos

 **≈796K+**
Songs

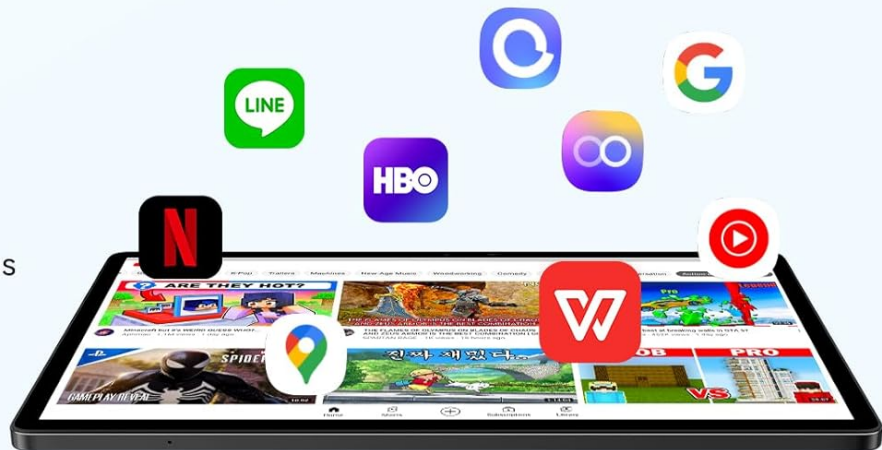


Figure 7: With 36GB RAM and 256GB ROM, the tablet offers ample space and smooth operation.

Camera Usage

The tablet features a 50MP main rear camera and a 13MP front camera. Open the Camera app to capture photos and videos. Utilize AI features like Magic Eraser, Color Focus, and Sky Replacement for enhanced photography.

13MP+50MP Dual Cameras, High-definition

Capture every wonderful moment, recording life's details

 **AI Smart Google Lens**
Translation/Recognition/Search/
Text Extraction & Copy/Homework Assistant

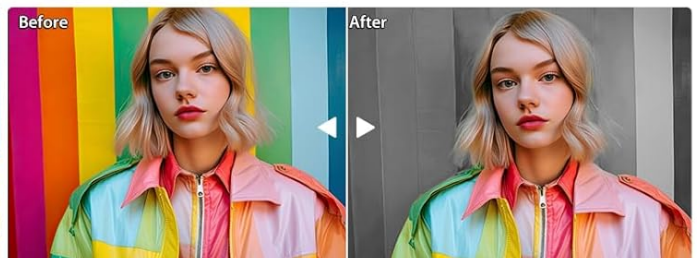


 **13MP**
Front-facing
AI Cameras

 **50MP**
Mega-clear
SONY®
IMX362 Main



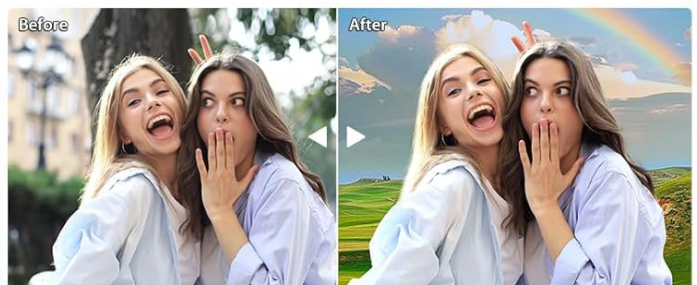
AI Magic Eraser



AI Color Focus



AI Sky



AI Background Changer Algorithm

Figure 8: High-definition dual cameras for capturing moments and utilizing AI enhancements.

Stylus Pen (S Pen)

The included S Pen allows for precise input, drawing, and note-taking. Simply touch the pen to the screen to interact with compatible applications. No pairing is required for basic functionality.

Connectivity

- **Wi-Fi:** Connect to 2.4G/5G dual-band Wi-Fi networks via Settings > Network & internet > Wi-Fi.
- **Bluetooth:** Pair with Bluetooth devices like headphones or speakers via Settings > Connected devices > Bluetooth.
- **4G LTE:** If a SIM card is inserted, mobile data can be enabled via Settings > Network & internet > Mobile network.

MAINTENANCE AND CARE

- **Cleaning:** Use a soft, lint-free cloth to clean the screen and body. Avoid abrasive cleaners or solvents.
- **Battery Care:** To prolong battery life, avoid extreme temperatures. Charge the tablet regularly, but do not leave it fully charged or fully discharged for extended periods.

- **Software Updates:** Keep your Android 15 operating system updated to ensure optimal performance and security. Updates are typically delivered Over-The-Air (OTA).
- **Storage Management:** Regularly clear unnecessary files and apps to maintain performance. The tablet supports up to 1TB TF card expansion for additional storage.

Light Weight and Portable, Use Anytime, Anywhere



 **736g**
Weight

 **7.85mm**
Thickness

Figure 9: The tablet's lightweight and slim design makes it easy to handle and maintain.

TROUBLESHOOTING

Problem	Possible Cause	Solution
Tablet does not power on.	Low battery; software crash.	Charge the tablet for at least 30 minutes. Press and hold the power button for 10-15 seconds to force restart.
Apps are slow or crashing.	Too many apps running; low storage; outdated software.	Close background apps. Clear cache/data for problematic apps. Check for system updates. Free up storage space.
Wi-Fi connection issues.	Incorrect password; router issue; signal interference.	Re-enter Wi-Fi password. Restart router. Move closer to the router.
Stylus pen not responding.	App incompatibility; physical damage.	Ensure the app supports stylus input. Test on another app. If issues persist, contact support.

SPECIFICATIONS

Feature	Detail
Model Name	MEGA 8
Item Model Number	T620
Operating System	Android 15
Screen Size	13 Inches
Screen Resolution	1920 x 1200 pixels
Processor	Unisoc T620 (Octa-core, 1.6 GHz)
RAM	12GB (expandable to 36GB)
Internal Storage	256 GB
Expandable Storage	Up to 1TB via TF card
Battery Capacity	11000mAh
Fast Charging	18W
Rear Camera	50MP
Front Camera	13MP
Wireless Type	802.11ac (2.4G/5G Dual band WiFi), Bluetooth 5.0, 4G LTE
Item Weight	3.98 pounds (approx. 1.8 kg)
Dimensions (LxWxH)	13.39 x 9.45 x 2.17 inches

WARRANTY AND SUPPORT

Blackview offers a **720-day (2-year) worry-free warranty** for the MEGA 8 tablet, ensuring quality and reliability. This includes free repair warranty and lifetime technician support.

For any questions, technical assistance, or warranty claims, please contact Blackview customer service:

- **Online Support:** Contact us through the Amazon order page.
- **Email Support:** support@blackview.hk
- **Phone Support:**
 - United States: +1 (717) 896-6060 (Monday to Friday, 9:00 AM to 5:00 PM Pacific Standard Time)
 - United Kingdom: +44 7700 156388 (Monday to Friday, 6:00 AM to 11:00 AM Greenwich Mean Time)
 - Germany: +49 157 3598 0115 (Monday to Friday, 9:00 AM to 5:00 PM Central European Time)
 - Canada: +1 (587) 841-0500 (Monday to Friday, 9:00 AM to 5:00 PM Pacific Standard Time)

Blackview is committed to providing excellent after-sales service, including online hotline support and on-site service centers in Europe.