



[Manuals.plus](#) /

› [Garvee](#) /

› Garvee 8x12 ft Metal Storage Shed Instruction Manual

Garvee y6S_K7ehxW7SfXGcbU3sAAvsKqz5q

Garvee 8x12 ft Metal Storage Shed Instruction Manual

Model: y6S_K7ehxW7SfXGcbU3sAAvsKqz5q

INTRODUCTION

This manual provides detailed instructions for the assembly, operation, and maintenance of your Garvee 8x12 ft Metal Storage Shed. Please read all instructions carefully before beginning assembly and retain this manual for future reference. Proper assembly and care will ensure the longevity and optimal performance of your storage shed.



Image: The Garvee 8x12 ft Metal Storage Shed, brown in color, situated on a wooden deck in a green backyard. A small dog sits near planters in front of the shed.

SAFETY INFORMATION

- Always wear appropriate safety gear, including gloves and eye protection, during assembly.
- Ensure the assembly area is clear of obstructions and hazards.
- Do not attempt to assemble the shed alone. It is recommended to assemble with multiple people.
- Keep children and pets away from the assembly area.
- Secure the shed to a level, stable foundation to prevent tipping or movement.

SETUP AND ASSEMBLY

1. Site Preparation

Select a flat, level surface for the shed installation. A solid foundation, such as concrete or a wooden deck, is

recommended to ensure stability and proper drainage. Clear the area of any debris, rocks, or vegetation.

2. Unpacking and Part Identification

Carefully unpack all components. All parts are pre-cut and pre-drilled, and marked with part numbers. Refer to the included parts list to identify each component. Two cartons are included, along with a pair of gloves for assembly.



Image: An illustration showing the overall dimensions of the shed (98" W x 147.6" D x 77.5" H) and indicating that a pair of gloves and two cartons are included in the package.

3. Assembly Steps

Follow the step-by-step instructions provided in the separate assembly guide. The shed is designed for straightforward assembly with pre-fabricated components. It is highly recommended to have multiple people assist with the assembly process for safety and efficiency.

Key features to note during assembly:

- **Sloped Roof Design:** The pitched roof is designed for quick water drainage, preventing pooling and rust.
- **Corner Protection:** Protective edge designs are integrated for enhanced durability and safety.
- **Door Handles:** Ergonomic handles facilitate easy opening and closing of the sliding door.

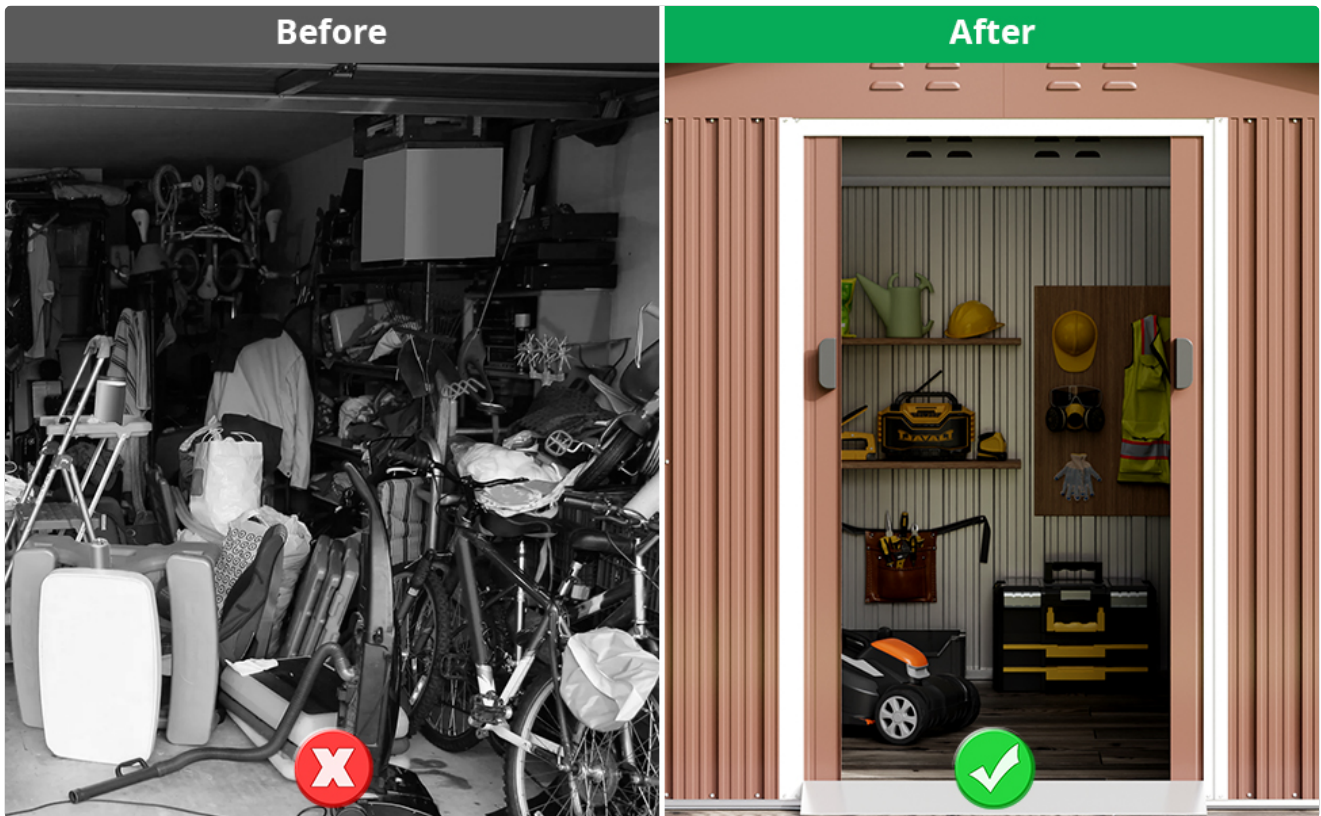


Image: A composite image highlighting key structural details: the sloped roof design for rain runoff, protective corner edges, and the design of the door handles for easy operation.

4. Video Instructions

While the product description mentions an assembly video, no specific video files with creator information were provided in the product data to embed here. Please refer to the manufacturer's website or product page for any available video guides.

OPERATING THE SHED

1. Door Operation

The shed features a sliding door for convenient access. The design saves interior space, allowing for more efficient storage of equipment. The door is lockable (lock not included) to enhance security and prevent unauthorized access. Ensure the door slides smoothly along its track and is properly closed when not in use.

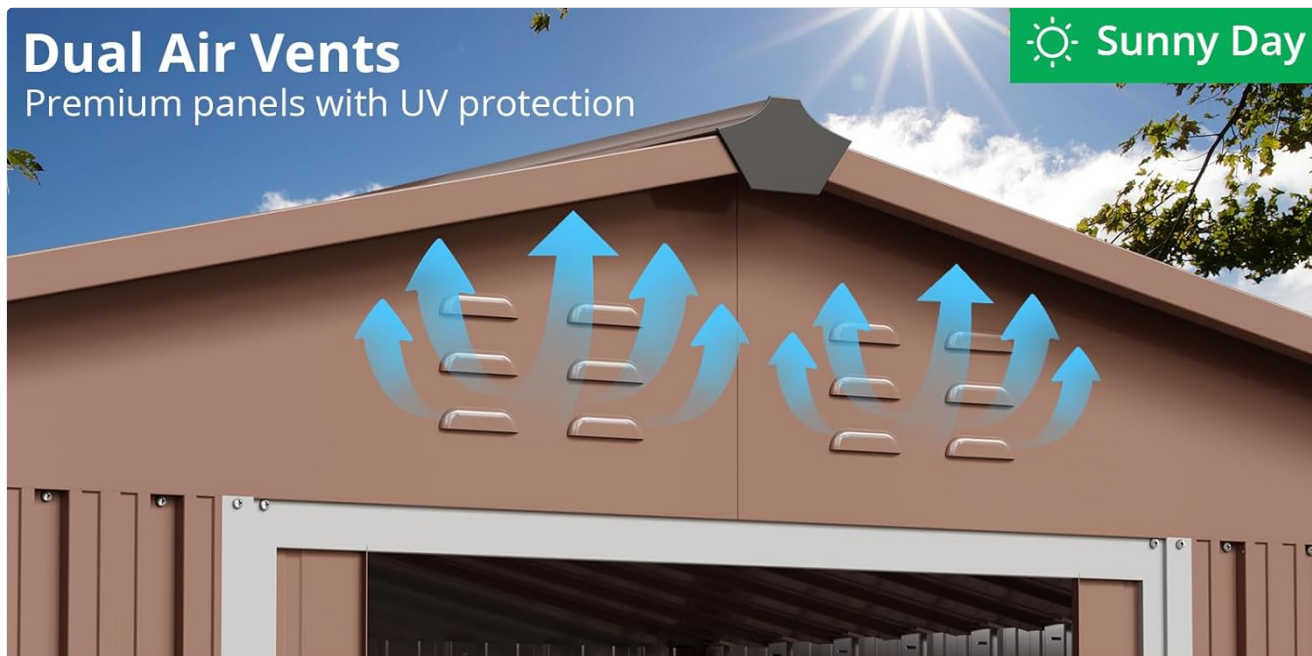
2. Ventilation

Integrated air vents promote circulation within the shed, helping to prevent condensation and maintain a suitable environment for stored items. These vents are located near the roofline.

Dual Air Vents

Premium panels with UV protection

 Sunny Day



Rust Prevention

Pitched roofs against standing water

 Rain Day

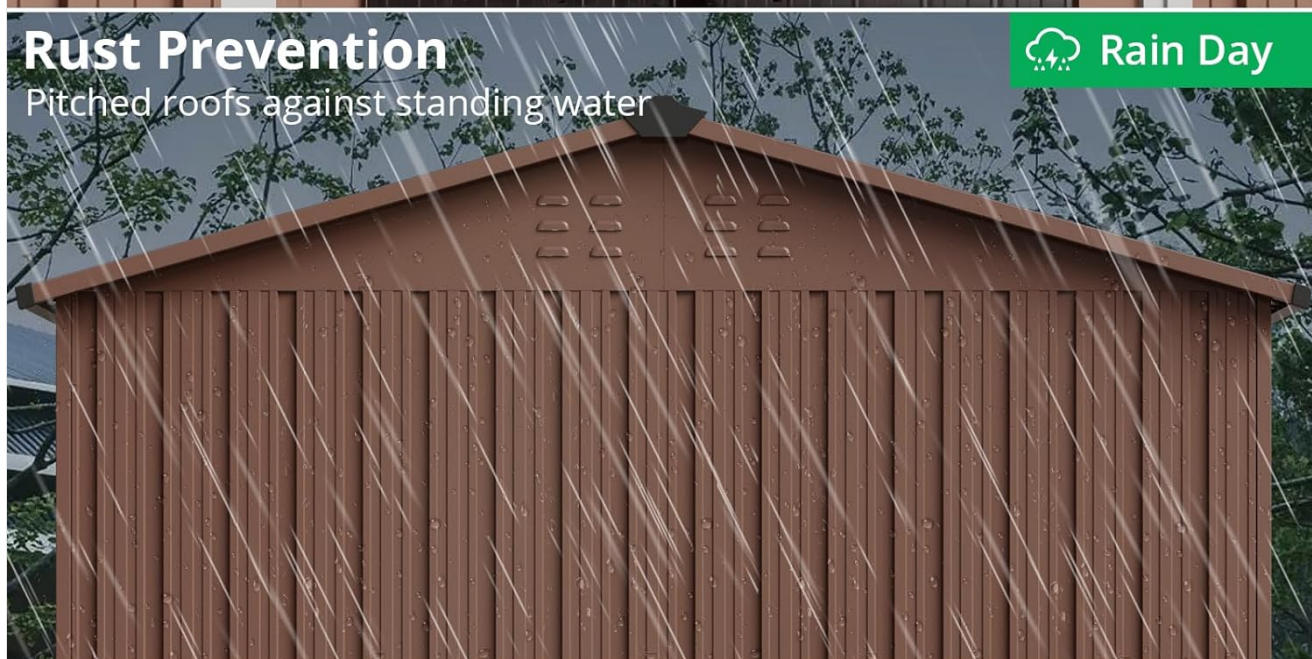


Image: A close-up view of the shed's roof, illustrating the dual air vents for circulation and the pitched roof design, which aids in rust prevention by shedding water.

3. Storage Capacity

This 8x12 ft shed offers ample interior space for organizing various tools, equipment, and materials. It is suitable for storing items such as bikes, lawnmowers, garden tools, and other backyard essentials.

Sheds & Outdoor Storage

Large Capacity

Fulfills your storage needs



Image: An interior perspective of the shed, demonstrating its large capacity with a bicycle, lawnmower, various hand tools, shelves, and storage boxes neatly arranged.



Image: A visual comparison showing a cluttered garage or storage area labeled "Before" on the left, and the organized interior of the Garvee shed labeled "After" on the right, highlighting its organizational benefits.

MAINTENANCE

Regular maintenance will extend the life of your Garvee storage shed.

- **Cleaning:** Periodically clean the exterior and interior surfaces with mild soap and water. Avoid abrasive cleaners or harsh chemicals that could damage the galvanized steel finish.
- **Drainage:** Ensure the area around the shed's base remains clear to allow for proper water drainage from the pitched roof. Remove any accumulated leaves or debris.
- **Door Tracks:** Keep the sliding door tracks clean and free of dirt or obstructions to ensure smooth operation. Lubricate if necessary.
- **Inspection:** Regularly inspect the shed for any signs of damage, loose fasteners, or corrosion. Address any issues promptly to prevent further deterioration.
- **Weather Resistance:** The shed is constructed from galvanized steel for advanced corrosion resistance and durability, designed to withstand various weather conditions and UV exposure.



Image: A split image of the shed's exterior, with one side depicting sunny conditions and "UV Protection" and the other side depicting rain and "100% Waterproof," illustrating its all-weather capabilities.

TROUBLESHOOTING

This section addresses common issues you might encounter with your storage shed.

- Issue: Door is difficult to slide.**
Solution: Check the door tracks for debris or dirt. Clean the tracks thoroughly and apply a silicone-based lubricant if needed. Ensure the shed is on a level surface, as uneven ground can affect door alignment.
- Issue: Water pooling on the roof.**
Solution: The pitched roof is designed for drainage. Verify that the shed is assembled correctly and that the roof panels are securely fastened. Ensure no debris is obstructing the roof's slope or gutters (if installed). If the issue persists, check the shed's foundation for levelness.
- Issue: Condensation inside the shed.**
Solution: Ensure the air vents are clear and not obstructed. Proper ventilation is crucial to reduce condensation. Avoid storing wet items inside the shed without allowing them to dry first.
- Issue: Loose panels or fasteners.**
Solution: Periodically inspect all screws and bolts. Tighten any loose fasteners to maintain the structural integrity of the shed. Do not overtighten.

SPECIFICATIONS

Feature	Detail
Brand	Garvee
Model Number	y6S_K7ehxW7SfXGcbU3sAAvsKqz5q

Color	Brown
Material	Galvanized Steel
Product Dimensions (L x W x H)	147.6" x 98" x 77.5" (approx. 12.3 ft x 8.2 ft x 6.4 ft)
Item Weight	117.7 Pounds
Water Resistance Level	Waterproof
Assembly Required	Yes
Roof Type	Pitched
Door Type	Sliding, Lockable (lock not included)

WARRANTY INFORMATION

Specific warranty details for the Garvee 8x12 ft Metal Storage Shed are not provided in the product data. Please refer to the official Garvee website or contact the seller directly for comprehensive warranty information and terms.

CUSTOMER SUPPORT

For further assistance, questions, or to report any issues, please contact Garvee customer support. You may find contact information on the official Garvee website or through your purchase platform. Visit the [Garvee Store on Amazon](#) for more information.