

WEWATCH WP01

WEWATCH Smart Projector User Manual

MODEL: WP01

1. Introduction

This manual provides detailed instructions for the setup, operation, and maintenance of your WEWATCH Smart Projector, Model WP01. Designed for a superior home theater experience, this projector combines advanced features with user-friendly functionality. Please read this manual thoroughly before using the product to ensure optimal performance and safety.



Image: The WEWATCH Smart Projector, showcasing its sleek design, included remote control, and the integrated streaming service interfaces for Netflix, Prime Video, and YouTube.

2. What's in the Box

Upon unpacking, please verify that all the following items are included:

- WEWATCH Smart Projector (WP01)
- Remote Control
- Power Cord
- HDMI Cable
- User Manual (this document)

3. Product Features

The WEWATCH WP01 Smart Projector is equipped with a range of features designed to enhance your viewing experience:

- **Smart TV OS with Official Netflix & Dolby Audio:** Integrated Smart TV operating system with pre-loaded and officially authorized Netflix, YouTube, and Prime Video apps. Enjoy immersive audio with Dolby Digital Sound.

- **Native 1080P Resolution & 800 ANSI Lumens Brightness:** Delivers crystal-clear Full HD 1080P images with exceptional brightness, ensuring vivid visuals even in well-lit environments. Supports HDR10 for enhanced contrast and color accuracy.
- **2.4G/5G Dual-Band WiFi & Two-Way Bluetooth:** Features fast dual-band WiFi for seamless content mirroring from mobile devices (Airplay for iOS, Miracast for Android & Windows). Two-way Bluetooth 5.0 allows connection to external speakers/headphones or using the projector as a Bluetooth speaker.
- **Advanced Calibration & Zoom:** Includes Auto Focus, Auto Keystone Correction, Intelligent Obstacle Avoidance, and Intelligent Screen Alignment for effortless setup and perfect image display. The 50%-100% zoom function allows flexible screen size adjustment.
- **Multiple Connectivity Options:** Equipped with 2 HDMI ports, 1 USB port, and 1 Audio Out for connecting various devices such as laptops, gaming consoles, and external audio systems.



Image: Comparison illustrating the superior brightness (800 ANSI Lumen) and native 1080P resolution of the WEWATCH WP01 projector against a standard 720P projector.

Dolby Audio & Two Way Bluetooth

Immersive sound with Dolby Audio,
Two-way bluetooth for versatile device connections



Image: A visual representation of the projector's Dolby Audio capabilities and two-way Bluetooth functionality, allowing connection to external speakers or use as a standalone Bluetooth speaker.

4. Setup

Follow these steps for initial setup of your projector:

1. **Placement:** Position the projector on a stable, flat surface. Ensure adequate ventilation around the device.
2. **Power Connection:** Connect the power cord to the projector's power input and then to a wall outlet.
3. **Power On:** Press the power button on the projector or the remote control to turn on the device.
4. **Remote Pairing:** If the remote is not responsive, ensure batteries are inserted correctly. The remote should automatically pair via Bluetooth during initial setup. Follow on-screen prompts if manual pairing is required.
5. **Automatic Calibration:** The projector will automatically perform auto-focus and keystone correction upon startup to provide a clear, rectangular image.
6. **Network Connection:** Navigate to the settings menu to connect the projector to your 2.4G or 5G Wi-Fi network.

4-In-1 Smart Calibration & 50-100% Zoom



Auto
Focus



Auto
Keystone
Correction



Intelligent
Screen
Alignment



Intelligent
Obstacle
Avoidance



50-100%
Zoom



Image: Visual guide to the projector's smart calibration features including auto-focus, auto keystone correction, intelligent screen alignment, intelligent obstacle avoidance, and the 50-100% zoom function.

5. Operating Instructions

Learn how to navigate and utilize the projector's functions:

- **Smart TV OS Navigation:** Use the remote control's directional pad and 'OK' button to navigate through the Smart TV interface.
- **Accessing Streaming Apps:** Directly launch pre-installed apps like Netflix, YouTube, and Prime Video from the home screen. Use the 'Open Browser' feature for other online content.
- **Screen Mirroring:** For iOS devices, use Airplay. For Android and Windows devices, use Miracast. Ensure both devices are connected to the same Wi-Fi network. Select the mirroring option on the projector and follow the instructions on your mobile device.
- **Adjusting Projection Size (Zoom):** Use the zoom function (50%-100%) via the remote control or on-screen menu to adjust the image size without moving the projector.
- **Using as a Bluetooth Speaker:** In the settings, enable Bluetooth receiver mode to connect your phone or other

Bluetooth devices to the projector and use its built-in speaker for audio playback.



Image: The projector's interface showing one-click access to popular streaming applications like Netflix, YouTube, and Prime Video, controlled by the included remote.

Dual-Band 2.4G & 5G for Ultimate Speed

Supports Miracast, Airplay &
Windows screen mirroring with lag-free streaming.



5G/2.4G Transmission speed



2.4G Transmission speed



Image: A user enjoying a video game projected onto a large screen, highlighting the smooth streaming capabilities enabled by the projector's dual-band 2.4G and 5G WiFi connectivity.

Multiple Connectivity Options



Image: An illustration demonstrating the projector's ability to create large displays, ranging from 60 inches to a massive 300 inches, depending on the projection distance from the screen or wall.

6. Connectivity

The WEWATCH WP01 offers diverse connectivity options:

- **HDMI Ports (x2):** Connect laptops, gaming consoles (PS4/PS5), Blu-ray players, or other HDMI-enabled devices.
- **USB Port (x1):** For connecting USB drives, mobile hard disks, or other USB storage devices to play media files.
- **Audio Out (3.5mm Jack):** Connect external headphones, soundbars, or speaker systems for enhanced audio.
- **Bluetooth 5.0:** Two-way Bluetooth for connecting to external Bluetooth speakers/headphones or using the projector as a Bluetooth speaker for your mobile devices.
- **Wi-Fi (2.4G/5G):** For internet access, streaming, and screen mirroring.

Go Big with a 300-Inch Screen Transform Any Space into a Cinematic Experience!

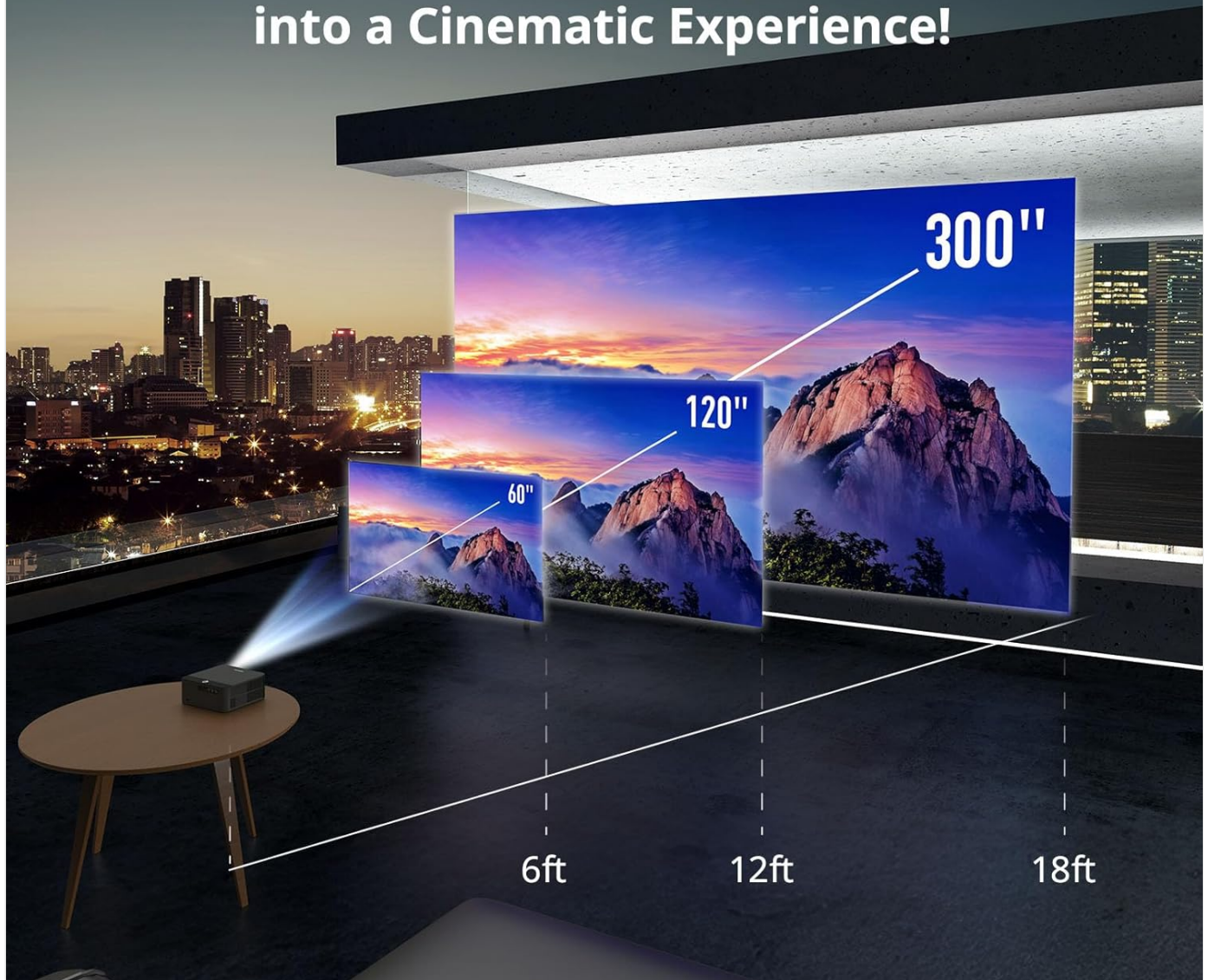


Image: A detailed view of the projector's multiple connectivity ports, including Audio Out for headsets/soundbars, USB for mobile hard disks/USB drives, and HDMI for laptops, PCs, iPads, phones, and gaming consoles.

7. Maintenance

Proper maintenance ensures the longevity and optimal performance of your projector:

- **Lens Cleaning:** Gently wipe the projector lens with a soft, lint-free cloth specifically designed for optical surfaces. Do not use abrasive cleaners.
- **Ventilation:** Ensure the projector's ventilation vents are clear and unobstructed to prevent overheating. Do not place the projector on soft surfaces that may block airflow.
- **Dust Removal:** Periodically use a can of compressed air to remove dust from the vents and exterior.
- **Storage:** When not in use for extended periods, store the projector in a cool, dry place, ideally in its original packaging or a protective case.

8. Troubleshooting

If you encounter issues with your projector, refer to the following common problems and solutions:

Problem	Possible Cause	Solution
Projector does not turn on	No power, loose connection, internal issue	Check power cord connection. Try a different outlet. Unplug for a few minutes, then plug back in and try again.
Image is blurry or out of focus	Auto-focus issue, manual adjustment needed	Allow auto-focus to complete. Use the F+/F- buttons on the remote for fine-tuning manual focus if needed.
Image is washed out or dim	Ambient light, projection surface, settings	Ensure room is sufficiently dark. Use a proper projection screen. Check brightness/contrast settings in the menu.
No image displayed	Incorrect input source, cable issue, device not connected	Verify the correct input source is selected (HDMI1, HDMI2, USB). Check HDMI/USB cable connections. Ensure connected device is powered on.
No sound	Volume too low, mute enabled, external audio device issue	Increase volume. Check if mute is enabled. If using external speakers, ensure they are connected correctly and powered on.
Remote control not working	Batteries, pairing issue, obstruction	Replace batteries. Re-pair the remote via Bluetooth settings if necessary. Ensure no obstructions between remote and projector.
Wi-Fi connection unstable	Signal interference, distance from router	Move projector closer to router. Reduce interference from other wireless devices. Try connecting to the other Wi-Fi band (2.4G or 5G).

9. Specifications

Key technical specifications for the WEWATCH WP01 Smart Projector:

Attribute	Detail
Brand	WEWATCH
Model	WP01
Display Resolution	1920 x 1080 (Native 1080P)
Brightness	800 ANSI Lumens
Contrast Ratio	1500:1
HDR Support	HDR10
Connectivity Technology	3.5mm Jack, Bluetooth 5.0, HDMI (x2), USB (x1), Wi-Fi (2.4G/5G)

Attribute	Detail
Special Features	Auto Focus, Auto Obstacle Avoidance, Auto Screen Alignment, Built-In Speaker, Auto Keystone Correction, 50-100% Zoom
Audio	Dolby Audio, 8W Speaker
Product Dimensions	11.02 x 9.45 x 4.21 inches
Item Weight	5.72 pounds
Color	Charcoal gray


10. Warranty and Support

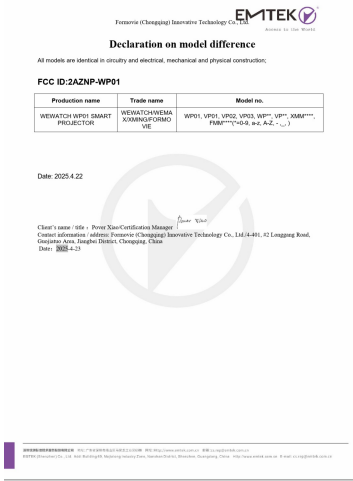
For warranty information, technical support, or service inquiries, please contact WEWATCH customer support through their official website or the retailer where the product was purchased. Keep your purchase receipt as proof of purchase for warranty claims.

WEWATCH Official Store: [Visit the WEWATCH Store on Amazon](#)

© 2025 WEWATCH. All rights reserved.

Related Documents

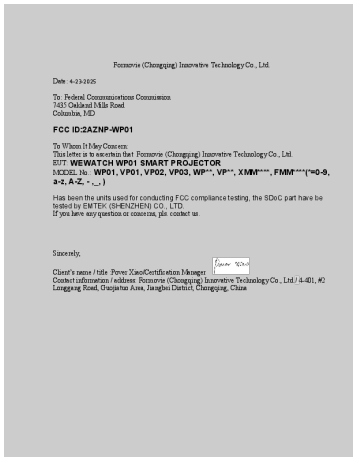
	<p>WEWATCH WP01 Smart Projector User Manual</p> <p>Comprehensive user manual for the WEWATCH WP01 Smart Projector, covering setup, troubleshooting, connections, screen mirroring, Bluetooth features, settings, and specifications.</p>
---	--



[pdf] Decleration of Conformity

FACSIMILE TRANSMISSION User Family Model Declaration Formovie Chongqing Innovative Technology Co Ltd WP01 WEWATCH SMART PROJECTOR 2AZNP 2AZNPWP01 wp01 Formovie Chongqing Innovative Technology Co., Ltd. Declaration on model difference All models are identical in circuitry and electrical, mechanical and physical construction; FCC ID:2AZNP-**WP01** Production name WEWATCH **WP01** SMART PROJECTOR Trade name WEWATCH/WEMA X/XMING/FORMO VIE Model no. WP0...

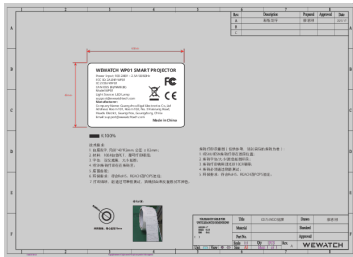
lang:tl score:35 filesize: 249.49 K page_count: 1 document date: 2025-04-24



[pdf]

Date siemic SDOC Attestation Letter Formovie Chongqing Innovative Technology Co Ltd WP01 WEWATCH SMART PROJECTOR 2AZNP 2AZNPWP01 wp01 Formovie Chongqing Innovative Technology Co., Ltd. Date: 4-23-2025 To: Federal Communications Commission 7435 Oakland Mills Road Columbia, MD FCC ID:2AZNP-**WP01** To Whom It May Concern: This letter is to ascertain that Formovie Chongqing Innovative Technology Co., Ltd. EUT: WEWATCH **WP01** SMART PROJ...

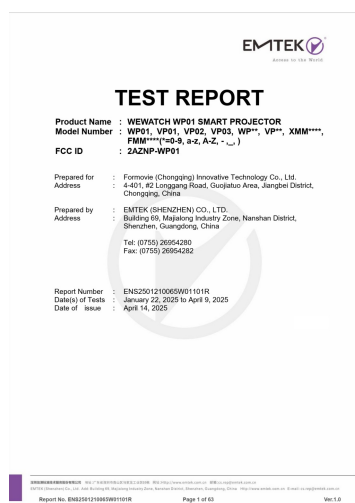
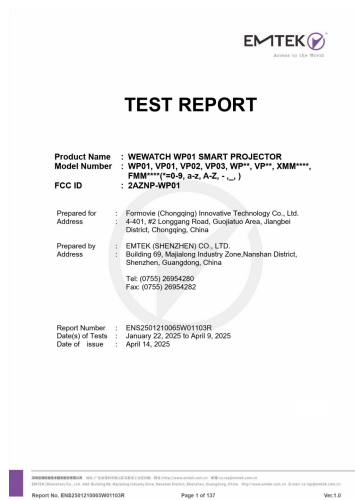
lang:tl score:34 filesize: 115.24 K page_count: 1 document date: 2025-04-24



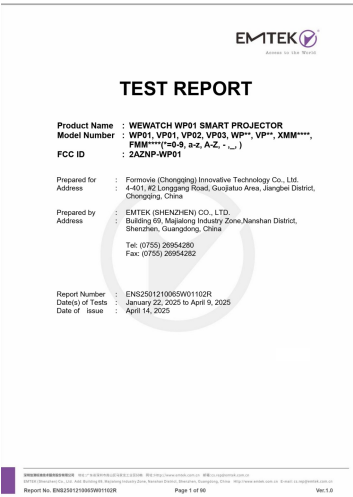
[pdf] Label

0218 WemaxC075 Label Formovie Chongqing Innovative Technology Co Ltd WP01 WEWATCH SMART PROJECTOR 2AZNP 2AZNPWP01 wp01 60mm C 40mm WEWATCH **WP01** SMART PROJECTOR Power Input: 100-240V - 2.5A 50/60Hz FCC ID: 2AZNP-**WP01** IC:27267-**WP01** CAN ICES B /NMB B Model:**WP01** Light Source: LED Lamp support wewatchtech.com Manufacturer: Company Name: Guangzhou Rigal Electronics Co.,Ltd Address: Room 101, Room 102, No. 3 Ruix...

lang:i-klngon score:33 filesize: 1.72 M page_count: 1 document date: 2025-02-18

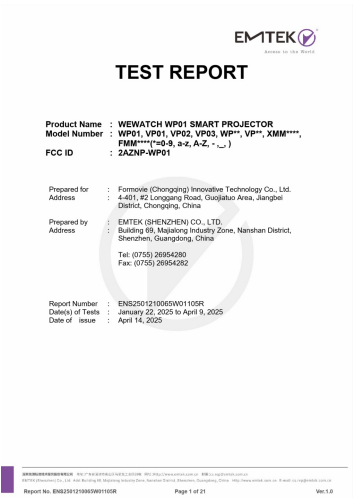


lang:en score:31 filesize: 3.69 M page count: 63 document date: 2025-04-21



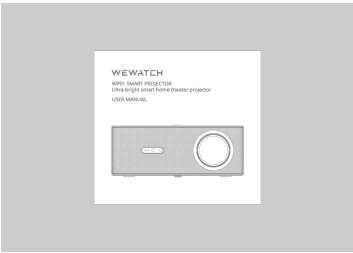
[pdf] Test Report

ELECTROMAGNETIC EMISSIONS COMPLIANCE REPORT fly Test Report BT Formovie Chongqing Innovative Technology Co Ltd WP01 WEWATCH SMART PROJECTOR 2AZNP 2AZNPWP01 wp01 TEST REPORT Product Name Model Number FCC ID : WEWATCH **WP01** SMART PROJECTOR : **WP01**, VP01, VP02, VP03, WP**, VP**, XMM****, FMM**** *=0-9, a-z, A-Z, -, _ : 2AZNP-**WP01** Prepared for Address Prepared by Address : Formovie Chongqing Innovative Technology Co., Ltd. : 4-401, #2 Longgang Road, Guoj... lang:en score:30 filesize: 5.83 M page_count: 90 document date: 2025-04-21



[pdf] Test Report

Wen Kuei Lo DFS Test Report Formovie Chongqing Innovative Technology Co Ltd WP01 2AZNP 2AZNPWP01 wp01 TEST REPORT Product Name : WEWATCH **WP01** SMART PROJECTOR Model Number : **WP01**, VP01, VP02, VP03, WP**, VP**, XMM****, FMM**** *=0-9, a-z, A-Z, -, _ , FCC ID : 2AZNP-**WP01** Prepared for Address Prepared by Address : Formovie Chongqing Innovative Technology Co., Ltd. : 4-401, #2 Longgang Road, G... lang:en score:28 filesize: 886.36 K page_count: 21 document date: 2025-04-21



[pdf] User Manual SAR Rating

2 user manual update sar User Manual Formovie Chongqing Innovative Technology Co Ltd WP01 WEWATCH SMART PROJECTOR 2AZNP 2AZNPWP01 wp01 ; = . D:Ez; ,9 1 .1 XH M B*, 3 *B .N f -3 ; Zp8 L 0,3 N1q v 8 S :4 * B* 5 A ue K6 a 8 q 9 i P # TU 3 8 O f # z ue K P .cK rCc i- i5 5 d. J I 8 *p * V Vs# L L9 6-6 15 6 _7j ... lang:i-klnglon score:24 filesize: 3.33 M page_count: 33 document date: 2025-04-29

FCC ID:2AZNP-WP01

RF EXPOSURE EVALUATION

According to FCC 1.1310, The criteria listed in the following table shall be used to evaluate the environment impact of human exposure to radio frequency (RF) Radiation as specified in §1.1307(b)

Limits for Maximum Permissible Exposure (MPE)

Frequency Range(MHz)	Electric Field Strength(V/m)	Magnetic Field Strength(A/m)	Power Density(mW/cm ²)	Average Time
(A) Limits for Occupational/Control Exposures				
300-1500	—	—	F/500	6
1500-10000	—	—	F/500	6
(B) Limits for General Population/Uncontrolled Exposures				
300-1500	—	—	F/1500	6
1500-10000	—	—	F/1500	30

11.1 Friis transmission formula: $P_d = (P_{out} G) (4\pi R^2)$

Where

P_d : Power density in mW/cm²

P_{out} : Output power to antenna in mW

G : Numeric gain of the antenna relative to isotropic antenna

R : 3.1416

R : distance between observation point and center of the radiator in cm

P_d the limit of MPE, $\sqrt{4\pi R^2 P_d}$ we know the maximum gain of the rd total power input to the antenna, through the calculation, we will know the distance where the MPE limit is reached.

RF Exposure Information: The radiated output power of this device meets the limits of FCC/IC radio frequency exposure limits. This device should be operated with a minimum separation distance of 20cm (8 inches) between the equipment and a person's body.

FORMOVIE CHONGQING INNOVATIVE TECHNOLOGY CO., LTD. 4-401, #2 LONGGANG ROAD, JIANGBEI DISTRICT, CHONGQING, CHINA
FORMOVIE CHONGQING INNOVATIVE TECHNOLOGY CO., LTD. 4-401, #2 LONGGANG ROAD, JIANGBEI DISTRICT, CHONGQING, CHINA

Formovie (Chongqing) Innovative Technology Co., Ltd.
4-401, #2 Longgang Road, Jiangbei Area, Chongqing District, Chongqing, China

Date: 4-24-2025

Federal Communications Commission
Authorization and Evaluation Division
7435 Oakland Mills Road
Columbia, MD 21046

FCC ID: 2AZNP-WP01
FRN: 0030818922

US Agent – Attestation Statement / Part 2.911(d)(7)

Formovie (Chongqing) Innovative Technology Co., Ltd. certifies that as of 4-24-2025, we have designated FCC US Agent, LLC to accept service of process on our behalf for FCC ID: 2AZNP-WP01. Formovie (Chongqing) Innovative Technology Co., Ltd. accepted to maintain an agent of service of process in the United States for no less than one year after either the grantee has permanently terminated all marketing and importation of the applicable equipment within the U.S., or the conclusion of any Commission-related administrative or judicial proceeding involving the equipment, whichever is later.

FCC US Agent, LLC, accepts on either side of the filing of this application, the obligation of being the designated agent for the purpose of accepting service of process on behalf of Formovie (Chongqing) Innovative Technology Co., Ltd. for FCC ID: 2AZNP-WP01.

Designated Agent Information:

Company Name: FCC US Agent, LLC
FIRN: 003082081
Address: 3722 Rhodes Avenue, Saint Charles, IL 60174, USA
Contact Person: Tim Payne
Phone: 708.571.2148
Email: Sales@FCCUSAgent.com

Sincerely,

Company: Formovie (Chongqing) Innovative Technology Co., Ltd.

Designated Agent: FCC US Agent, LLC

Company Representative: Pines

Designated Agent Representative: Tim Payne

Signature: [Signature]

Signature: [Signature]

Date: 2025-4-24

Date: 2025-4-24

[\[pdf\]](#) SAR Rating

According to §15 Benjamin RF Exposure Formovie Chongqing Innovative Technology Co Ltd WP01 WEWATCH SMART PROJECTOR 2AZNP 2AZNPWP01 wp01

FCC ID:2AZNP-**WP01** RF EXPOSURE EVALUATION According to FCC 1.1310: The criteria listed in the following table shall be used to evaluate the environment impact of human exposure to radio frequency RF Radiation as specified in 1.1307 b Limits for Maximum Permissible Exposure MPE Frequency Elect...

lang:en score:22 filesize: 180.82 K page_count: 2 document date: 2025-04-24

[\[pdf\]](#)

Microsoft Word F US Agent Attestation Statement Part 2.911 d 7 docx Miranda Lu part Formovie Chongqing Innovative Technology Co Ltd WP01 WEWATCH SMART PROJECTOR 2AZNP 2AZNPWP01 wp01

Formovie Chongqing Innovative Technology Co., Ltd. 4-401, #2 Longgang Road, Guojiatuo Area, Jiangbei District, Chongqing, China Date: 4-24-2025 Federal Communications Commission Authorization and Evaluation Division 7435 Oakland Mills Road Columbia, MD 21046 FCC ID:2AZNP-**WP01** FRN:0030815922 US Ag...
lang:en score:22 filesize: 194.92 K page_count: 1 document date: 2025-04-24

[\[pdf\]](#) Confidentiality Request Letter

APPLICANT S LETTERHEAD Sid Sanders Confidentiality Letter Formovie Chongqing Innovative Technology Co Ltd WP01 WEWATCH SMART PROJECTOR 2AZNP 2AZNPWP01 wp01
Formovie Chongqing Innovative Technology Co., Ltd. Federal Communications Commission Authorization and Evaluation Division Confidentiality Request regarding application for certification of FCC ID: 2AZNP-**WP01** Pursuant to Sections 0.457 and 0.459 of the Commission s Rules, we hereby request confide...

lang:en score:22 filesize: 132.21 K page_count: 1 document date: 2025-04-24

Formovie (Chongqing) Innovative Technology Co., Ltd.

Federal Communications Commission
Authorization and Evaluation Division

Confidentiality Request regarding application for certification of FCC ID: 2AZNP-WP01
Pursuant to Sections 0.457 and 0.459 of the Commission's Rules, we hereby request confidential treatment of information accompanying this application as outlined below

FIRM Type

Block Diagram,
Schematic,
Operational Description,
Software Security Info

FIRM Name

Block Diagram,
Schematic,
Operational Description,
Software Security Info

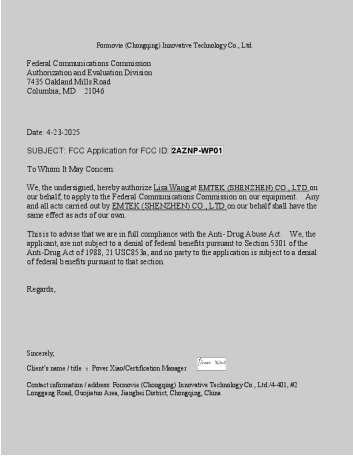
The above outside contains trade secrets and proprietary information not customarily released to the public. The public disclosure of these materials may be harmful to the applicant and provide requested benefits to its competitors.

Client's name: [Redacted] Formovie (Chongqing) Innovative Technology Co., Ltd.
Contact information: [Redacted] Formovie (Chongqing) Innovative Technology Co., Ltd. 4-401, #2 Longgang Road, Chongqing Area, Jiangbei District, Chongqing, China
Date: 2025-4-24



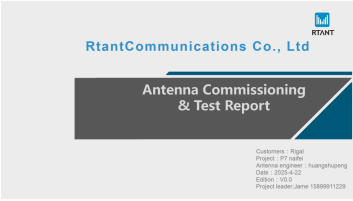
[pdf]

APPLICANT S LETTERHEAD Sid Sanders Attstn Strmt part 2 911 d 5 i ii Formovie Chongqing Innovative Technology Co Ltd WP01 WEWATCH SMART PROJECTOR 2AZNP 2AZNPWP01 wp01
Formovie Chongqing Innovative Technology Co., Ltd. Federal Communications Commission Authorization and Evaluation Division 7435 Oakland Mills Road Columbia, MD 21046 USA Date: 4-22-2025 Ref: Attestation Statements Part 2.911 d 5 i Filing FCC ID: 2AZNP-**WP01** Formovie Chongqing Innovative Techno...
lang:en score:21 filesize: 108.29 K page_count: 2 document date: 2025-04-24



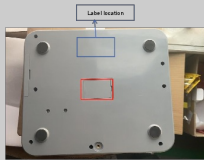
[pdf]

TIMCO Engineering Inc Valued Sony Customer POA Letter Formovie Chongqing Innovative Technology Co Ltd WP01 WEWATCH SMART PROJECTOR 2AZNP 2AZNPWP01 wp01
Formovie Chongqing Innovative Technology Co., Ltd. Federal Communications Commission Authorization and Evaluation Division 7435 Oakland Mills Road Columbia, MD 21046 Date: 4-23-2025 SUBJECT: FCC Application for FCC ID: 2AZNP-**WP01** To Whom It May Concern: We, the undersigned, hereby authorize Lisa W...
lang:en score:21 filesize: 113.04 K page_count: 1 document date: 2025-04-24



[pdf] Test Report Catalog

Antenna Report Formovie Chongqing Innovative Technology Co Ltd WP01 WEWATCH SMART PROJECTOR 2AZNP 2AZNPWP01 wp01
RtantCommunications Co., Ltd Antenna Commissioning Test Report CustomersRigal ProjectP7 naifei Antenna engineerhuangshupeng Date2025-4-22 EditionV0.0 Project leader:Jame 15899911229 CATALOGUE Antenna matching circuit Introduction to project debugging Machine type Antenna type Antenna type ...
lang:en score:14 filesize: 4.35 M page_count: 19 document date: 2025-04-22



[\[pdf\]](#) Label

LYF Label Location Formovie Chongqing Innovative Technology Co Ltd WP01 WEWATCH SMART PROJECTOR 2AZNP 2AZNPWP01 wp01

Label location ...

lang:en **score:14** filesize: 67.76 K page_count: 1 document date: 2025-04-23

TEST SETUP PHOTOGRAPHS

1.1 Photos of Conducted Emission Measurement



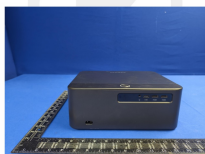
[\[pdf\]](#) Test Report Product Photos

EMC TEST REPORT Sky Zhang TSUP Formovie Chongqing Innovative Technology Co Ltd WP01 WEWATCH SMART PROJECTOR 2AZNP 2AZNPWP01 wp01

TEST SETUP PHOTOGRAPHS 1.1.Photos of Conducted Emission Measurement
1.2.Photos of Radiation Emission Measurement Spurious Emission Test Setup Below 1GHz Spurious Emission Test Setup Above 1GHz -----The end----- ...

lang:en **score:14** filesize: 796.07 K page_count: 2 document date: 2025-04-16

EUT EXTERNAL PHOTOGRAPHS

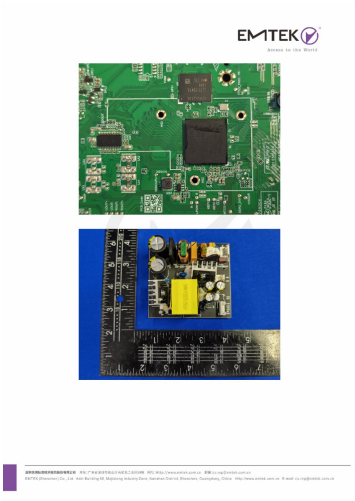


[\[pdf\]](#) Test Report Product Photos

EMC TEST REPORT Sky Zhang External Photos Formovie Chongqing Innovative Technology Co Ltd WP01 WEWATCH SMART PROJECTOR 2AZNP 2AZNPWP01 wp01

EUT EXTERNAL PHOTOGRAPHS -----The end----- ...

lang:en **score:13** filesize: 4.08 M page_count: 5 document date: 2025-04-16

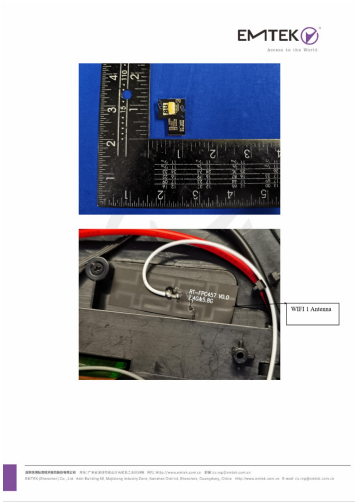


[pdf] Test Report Product Photos Teardown

EMC TEST REPORT Sky Zhang Internal Photos Part 2 Formovie Chongqing Innovative Technology Co Ltd WP01 WEWATCH SMART PROJECTOR 2AZNP 2AZNPWP01 wp01

...

lang:en score:13 filesize: 4.67 M page_count: 3 document date: 2025-04-29

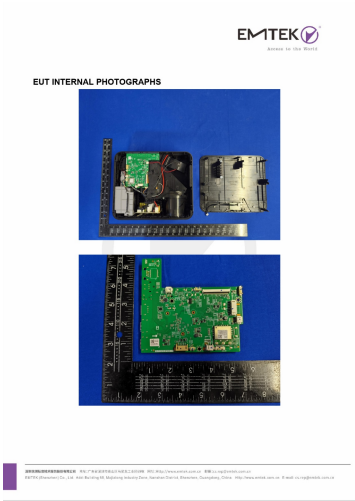


[pdf] Test Report Product Photos Teardown

EMC TEST REPORT Sky Zhang Internal Photos Part 3 Formovie Chongqing Innovative Technology Co Ltd WP01 WEWATCH SMART PROJECTOR 2AZNP 2AZNPWP01 wp01

WIFI 1 Antenna WIFI 2 Antenna BT Antenna -----The end----- ...

lang:en score:13 filesize: 2.43 M page_count: 2 document date: 2025-04-29

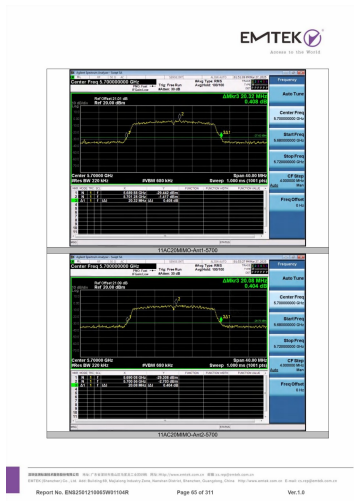


[pdf] Test Report Product Photos Teardown

EMC TEST REPORT Sky Zhang Internal Photos Part 1 Formovie Chongqing Innovative Technology Co Ltd WP01 WEWATCH SMART PROJECTOR 2AZNP 2AZNPWP01 wp01

EUT INTERNAL PHOTOGRAPHS ...

lang:en score:13 filesize: 4.75 M page_count: 3 document date: 2025-04-29



[pdf] Test Report

ELECTROMAGNETIC EMISSIONS COMPLIANCE REPORT fly Test Report 5G Part 2 Formovie

Chongqing Innovative Technology Co Ltd WP01 WEWATCH SMART PROJECTOR 2AZNP

2AZNPWP01 wp01

11AC20MIMO-Ant1-5700 11AC20MIMO-Ant2-5700 Report No.

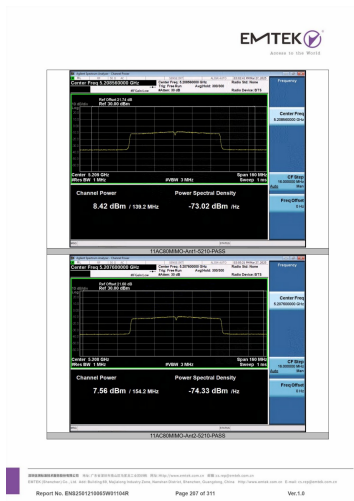
ENS2501210065W01104R Page 65 of 311 Ver.1.0 11AC20MIMO-Ant1-5745

11AC20MIMO-Ant2-5745 Report No. ENS2501210065W01104R Page 66 of 311

Ver.1.0 11AC20MIMO-Ant1-5785 11AC20MIMO-Ant2-5785 Report No.

ENS2501210065W01104R Page 67 of 311 V...

lang:en score:13 filesize: 5.43 M page_count: 47 document date: 2025-04-24



[pdf] Test Report

ELECTROMAGNETIC EMISSIONS COMPLIANCE REPORT fly Test Report 5G Part 5 Formovie

Chongqing Innovative Technology Co Ltd WP01 WEWATCH SMART PROJECTOR 2AZNP

2AZNPWP01 wp01

11AC80MIMO-Ant1-5210-PASS 11AC80MIMO-Ant2-5210-PASS Report No.

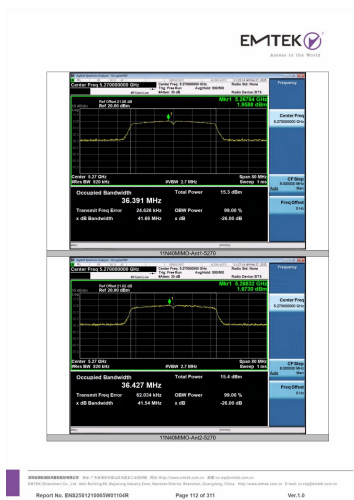
ENS2501210065W01104R Page 207 of 311 Ver.1.0 11AC80MIMO-Ant1-5290-PASS

11AC80MIMO-Ant2-5290-PASS Report No. ENS2501210065W01104R Page 208 of

311 Ver.1.0 11AC80MIMO-Ant1-5530-PASS 11AC80MIMO-Ant2-5530-PASS Report

No. ENS2501...

lang:en score:13 filesize: 5.39 M page_count: 49 document date: 2025-04-24



[pdf] Test Report

ELECTROMAGNETIC EMISSIONS COMPLIANCE REPORT fly Test Report 5G Part 3 Formovie

Chongqing Innovative Technology Co Ltd WP01 WEWATCH SMART PROJECTOR 2AZNP

2AZNPWP01 wp01

11N40MIMO-Ant1-5270 11N40MIMO-Ant2-5270 Report No.

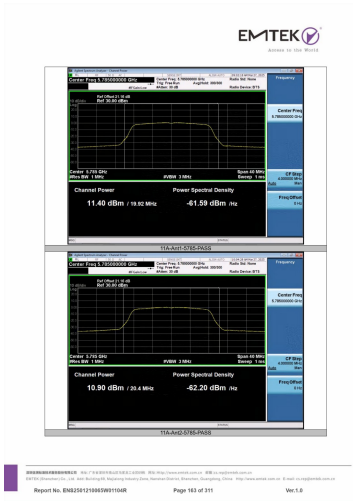
ENS2501210065W01104R Page 112 of 311 Ver.1.0 11N40MIMO-Ant1-5310

11N40MIMO-Ant2-5310 Report No. ENS2501210065W01104R Page 113 of 311

Ver.1.0 11N40MIMO-Ant1-5510 11N40MIMO-Ant2-5510 Report No.

ENS2501210065W01104R Page 114 of 311 Ver....

lang:nl score:13 filesize: 5.46 M page_count: 51 document date: 2025-04-24



[pdf] Test Report

ELECTROMAGNETIC EMISSIONS COMPLIANCE REPORT fly Test Report 5G Part 4 Formovie

Chongqing Innovative Technology Co Ltd WP01 WEWATCH SMART PROJECTOR 2AZNP

2AZNPWP01 wp01

11A-Ant1-5785-PASS 11A-Ant2-5785-PASS Report No. ENS2501210065W01104R

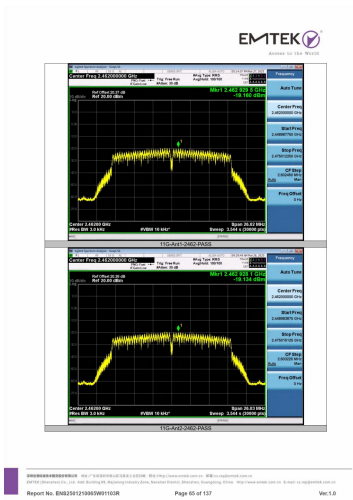
Page 163 of 311 Ver.1.0 11A-Ant1-5825-PASS 11A-Ant2-5825-PASS Report No.

ENS2501210065W01104R Page 164 of 311 Ver.1.0 11N20MIMO-Ant1-5180-PASS

11N20MIMO-Ant2-5180-PASS Report No. ENS2501210065W01104R Page 165 of

311...

lang:nl score:13 filesize: 5.44 M page_count: 44 document date: 2025-04-24



[pdf] Test Report

ELECTROMAGNETIC EMISSIONS COMPLIANCE REPORT fly Test Report 2 4G Part Formovie

Chongqing Innovative Technology Co Ltd WP01 WEWATCH SMART PROJECTOR 2AZNP

2AZNPWP01 wp01

11G-Ant1-2462-PASS 11G-Ant2-2462-PASS Report No. ENS2501210065W01103R

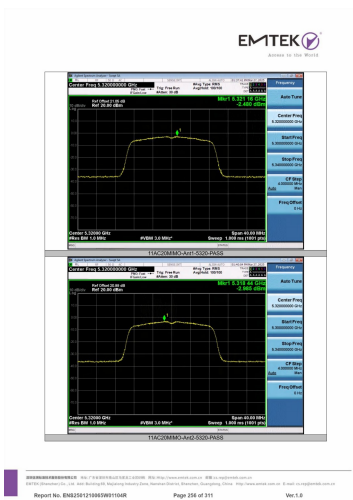
Page 65 of 137 Ver.1.0 11N20MIMO-Ant1-2412-PASS 11N20MIMO-Ant2-2412-PASS

Report No. ENS2501210065W01103R Page 66 of 137 Ver.1.0 11N20MIMO-Ant1-

2437-PASS 11N20MIMO-Ant2-2437-PASS Report No. ENS2501210065W01103R

Page ...

lang:en score:13 filesize: 5.49 M page_count: 48 document date: 2025-04-24



[pdf] Test Report

ELECTROMAGNETIC EMISSIONS COMPLIANCE REPORT fly Test Report 5G Part 6 Formovie

Chongqing Innovative Technology Co Ltd WP01 WEWATCH SMART PROJECTOR 2AZNP

2AZNPWP01 wp01

11AC20MIMO-Ant1-5320-PASS 11AC20MIMO-Ant2-5320-PASS Report No.

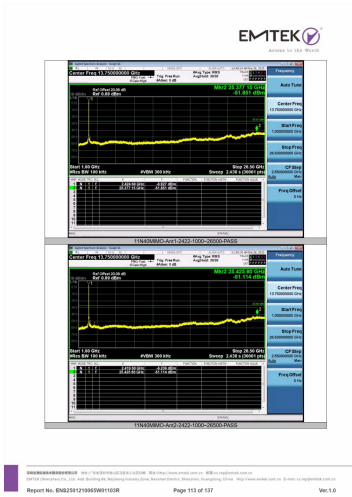
ENS2501210065W01104R Page 256 of 311 Ver.1.0 11AC20MIMO-Ant1-5500-PASS

11AC20MIMO-Ant2-5500-PASS Report No. ENS2501210065W01104R Page 257 of

311 Ver.1.0 11AC20MIMO-Ant1-5580-PASS 11AC20MIMO-Ant2-5580-PASS Report

No. ENS2501...

lang:nl score:13 filesize: 3.54 M page_count: 56 document date: 2025-04-24



[pdf] Test Report

ELECTROMAGNETIC EMISSIONS COMPLIANCE REPORT fly Test Report 2 4G Part 3 Formovie
Chongqing Innovative Technology Co Ltd WP01 WEWATCH SMART PROJECTOR 2AZNP
2AZNPWP01 wp01

11N40MIMO-Ant1-2422-1000-26500-PASS 11N40MIMO-Ant2-2422-1000-26500-
PASS Report No. ENS2501210065W01103R Page 113 of 137 Ver.1.0 11N40MIMO-
Ant1-2437-0-Reference-PASS 11N40MIMO-Ant2-2437-0-Reference-PASS Report
No. ENS2501210065W01103R Page 114 of 137 Ver.1.0 11N40MIMO-Ant1-2437-30-
1000-PA...

lang:en score:13 filesize: 1.5 M page_count: 25 document date: 2025-04-24