

Manuals+

[Q & A](#) | [Deep Search](#) | [Upload](#)

manuals.plus /

› [TCL](#) /

› [TCL Smart Lock D1 User Manual](#)

TCL D1

TCL Smart Lock D1 User Manual

Model: D1

1. INTRODUCTION

The TCL Smart Lock D1 is an advanced keyless entry system designed to enhance your home security and convenience. Featuring multiple unlock methods including fingerprint, passcode, smartphone app, and traditional key, it offers flexible access control. With built-in Wi-Fi, you can manage your lock remotely and receive real-time notifications. This manual provides detailed instructions for installation, operation, and maintenance of your TCL Smart Lock D1.



Figure 1.1: Overview of the TCL Smart Lock D1 and its accompanying mobile application.

2. SAFETY INFORMATION

Please read all safety instructions carefully before installation and use. Failure to follow these instructions may result in damage to the product, property, or personal injury.

- Do not attempt to disassemble or modify the lock. This will void the warranty and may cause malfunction.
- Use only the specified battery type (4 to 8 AA batteries). Do not mix old and new batteries or different types of batteries.
- Keep physical keys in a secure location outside the home to prevent lockout in case of battery depletion or system malfunction.
- Ensure the door frame and door are structurally sound and properly aligned before installation.
- Protect the keypad from direct exposure to harsh weather conditions if possible, although the lock is weather resistant.

3. PACKAGE CONTENTS

Verify that all components are present in the package before beginning installation:

- 1 x D1 Smart Lock (Exterior Keypad and Interior Unit)
- 1 x User Manual
- 2 x Physical Keys

- 1 x Screws Set
- Mounting Hardware (Latch, Strike Plate, Reinforcement Plate)



Figure 3.1: Included components of the TCL Smart Lock D1.

4. SETUP AND INSTALLATION

4.1 Pre-installation Checks

Before installation, ensure your door meets the following specifications:

- **Door Thickness:** 1-3/8" to 2-1/6" (35mm-55mm)
- **Cross Bore Diameter:** 1-1/2" or 2-1/8" (38mm/54mm)
- **Backset Distance:** 2-3/8" or 2-3/4" (60mm/70mm)

Check Before Purchase

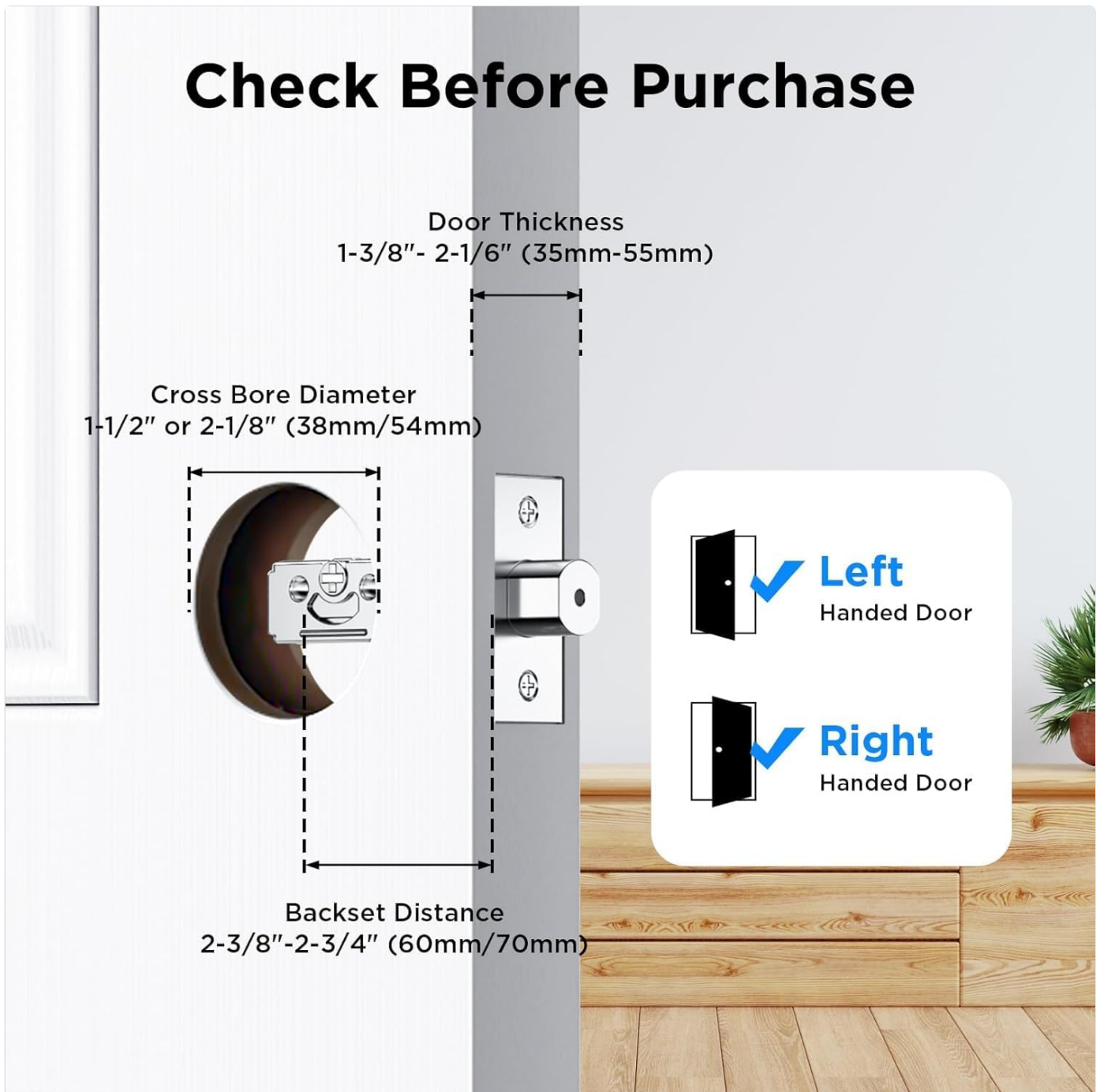


Figure 4.1: Door measurement guide for compatibility.

4.2 Installation Steps

The TCL D1 smart lock is designed for quick and easy installation, typically requiring only a screwdriver. No drilling or wiring is required for standard installations.

1. **Prepare the Door:** Ensure the existing deadbolt is removed and the door is clean.
2. **Install the Latch:** Insert the latch into the door edge, ensuring the "UP" arrow is pointing upwards. Adjust the backset if necessary.
3. **Install the Exterior Keypad:** Route the cable through the cross bore and align the keypad with the latch.
4. **Install the Interior Mounting Plate:** Secure the mounting plate to the exterior keypad using the provided screws.
5. **Connect Cables and Install Interior Unit:** Connect the cable from the exterior keypad to the interior unit. Secure the interior unit to the mounting plate.
6. **Install Batteries:** Open the battery cover on the interior unit and insert 4 to 8 AA batteries. Ensure correct polarity.
7. **Test the Lock:** Manually operate the deadbolt to ensure smooth movement.

For a visual guide, refer to the installation video provided by TCL (if available on the product page or manufacturer's website).

4.3 Battery Installation and Management

The TCL D1 smart lock operates on 4 to 8 AA batteries. For optimal performance and battery life, use high-quality alkaline batteries.

- The lock will provide low battery alerts via the mobile app, ensuring you are notified before the batteries are completely depleted.
- In case of complete battery depletion, the lock can be opened using the physical key.



Figure 4.2: Battery compartment of the interior unit.

5. OPERATING THE SMART LOCK

5.1 Unlock Methods

The TCL D1 offers four primary methods for unlocking your door:

- **Fingerprint:** Utilize the integrated Swedish FPC fingerprint sensor for ultra-fast 0.3-second unlocking. The AI self-learning algorithm improves accuracy over time.
- **Passcode:** Enter your secure passcode on the illuminated keypad.
- **Smartphone App:** Use the dedicated mobile application to unlock the door remotely or when in Bluetooth range.
- **Physical Key:** A traditional key can be used as a backup.

4-IN-1 Unlock Smarter

Biometric, App, Key & More - Your Door, Your Rules

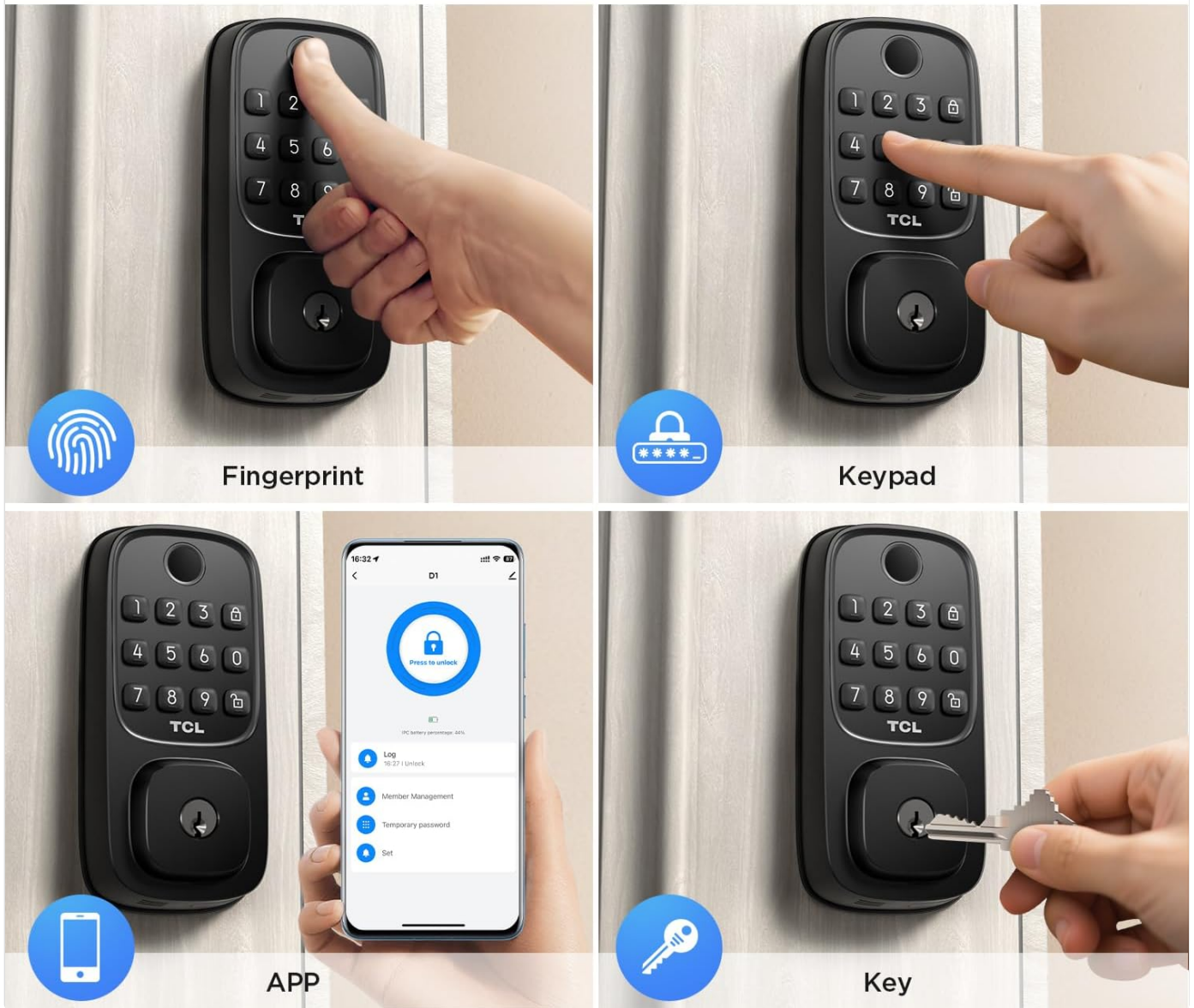


Figure 5.1: Multiple unlock options for the TCL Smart Lock D1.

Touch to Open, AI Smart Unlocking

The more you use it, the smarter it gets - AI unlocking



AI Precision Recognition



Unlock in **0.3** seconds

Figure 5.2: Fingerprint unlocking in action.

5.2 Remote Access and Notifications

The built-in 2.4GHz Wi-Fi module allows for remote control and monitoring of your lock from anywhere via the mobile app. No additional gateway is required.

- Receive 24/7 alerts for lock activity directly on your smartphone.
- Track unlock records to see who accessed your door and when.
- Manage access remotely, including granting or revoking temporary codes.

Wi-Fi Connectivity

Remote access & control via App anytime, anywhere



2.4G



**You don't need a separately purchased gateway!*

Figure 5.3: Wi-Fi connectivity for remote control.

Data 100% Stored Locally



Figure 5.4: Remote unlocking via the mobile app.

5.3 Auto-Lock Feature

The auto-lock feature automatically secures your door after a set period following entry or exit. This customizable delay ensures your home is always protected, even if you forget to manually lock it.

5.4 Smart User Management and Voice Control

Manage multiple user profiles directly within the mobile app. Assign permanent, temporary, or scheduled access for family, friends, or guests.

- The TCL D1 is compatible with Amazon Alexa and Google Assistant, allowing for hands-free voice commands to lock or unlock your door.

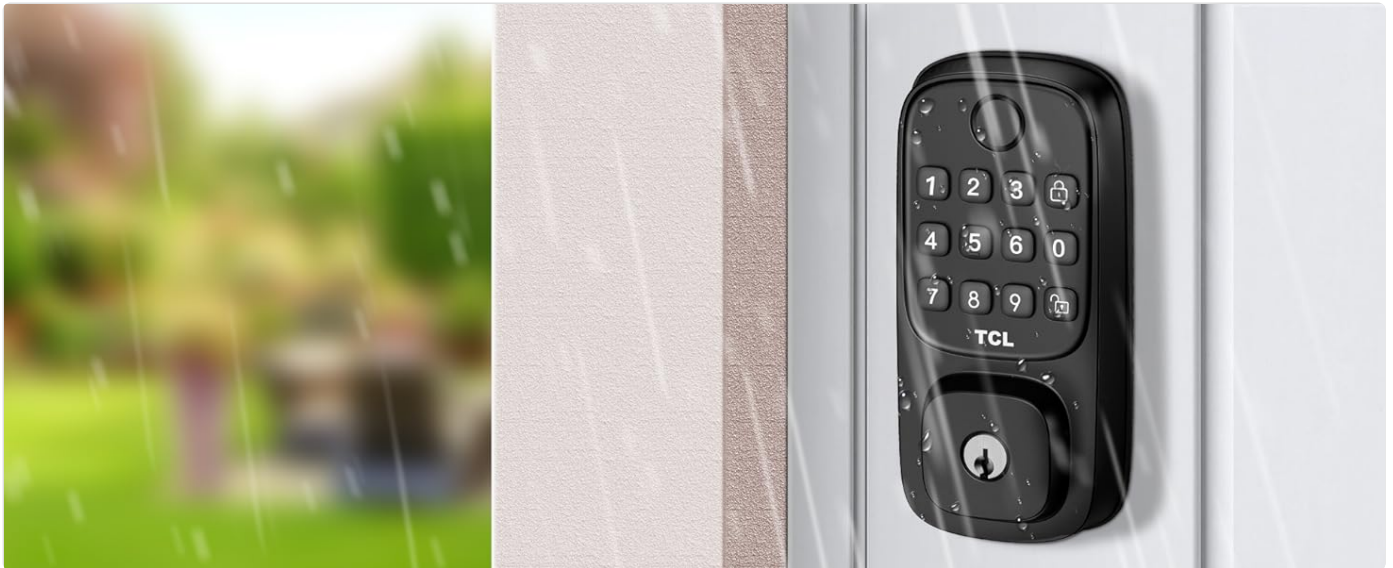


Figure 5.5: Voice control integration with smart home assistants.

6. MAINTENANCE

6.1 Battery Replacement

When the mobile app indicates a low battery alert, replace all batteries promptly to ensure continuous operation. Use 4 to 8 new AA alkaline batteries.

1. Remove the battery cover on the interior unit.
2. Remove all old batteries.
3. Insert new batteries, ensuring correct polarity (+/-).
4. Replace the battery cover.

6.2 Cleaning

To maintain the appearance and functionality of your smart lock:

- Wipe the exterior surfaces with a soft, damp cloth.
- Do not use abrasive cleaners, solvents, or chemical sprays, as these can damage the finish and electronic components.
- Keep the fingerprint sensor clean and free of debris for optimal performance.



Figure 6.1: The lock is designed to be weather resistant.

7. TROUBLESHOOTING

If you encounter issues with your TCL Smart Lock D1, refer to the following common problems and solutions:

Problem	Possible Cause	Solution
Lock does not respond.	Dead batteries.	Replace all batteries with new AA alkaline batteries. Use the physical key if necessary.
Fingerprint not recognized.	Finger is wet, dirty, or sensor is obstructed. Fingerprint not properly enrolled.	Ensure finger and sensor are clean and dry. Try re-enrolling the fingerprint in the app.
Cannot connect to Wi-Fi or app.	Weak Wi-Fi signal. Incorrect Wi-Fi password. Router issues.	Ensure lock is within Wi-Fi range. Verify Wi-Fi password. Restart router. Re-pair the lock with the app.
Auto-lock not working.	Feature disabled or delay set too long.	Check auto-lock settings in the mobile app and adjust the delay time.
Lock is stiff or difficult to operate.	Misalignment of lock components or door frame.	Check installation alignment. Ensure the latch bolt moves freely without obstruction. Adjust strike plate if needed.

If the problem persists, please contact TCL customer support.

8. SPECIFICATIONS

Feature	Detail
Brand	TCL
Model Name	Fingerprint Smart Lock (D1)
Lock Type	Biometric, Combination Lock, Deadbolt, Keypad WiFi smart lock
Special Features	Auto-Lock, Back-Lit Keypad, Fingerprint, Passcode Unlock, Weather Resistant
Material	Aluminum
Color	Black
Item Dimensions (L x W x H)	9 x 5 x 4 inches

Feature	Detail
Item Weight	2.6 Pounds
Connectivity Protocol	2.4 GHz Wi-Fi (Not 5G)
Control Method	App, Remote, Voice
Controller Type	Amazon Alexa, Google Assistant
Power Source	4 to 8 AA Batteries (not included)
Recommended Uses	Front and Back Doors, Home Security, Hotel & Vacation Rentals, Office & Business, Smart Home Integration, Vacation Homes & Rentals

9. WARRANTY AND SUPPORT

TCL provides comprehensive support for your Smart Lock D1:

- **Warranty:** Enjoy peace of mind with a 12-month warranty from the date of purchase.
- **Technical Support:** Lifetime technical support is available for all TCL Smart Lock D1 users.
- **Customer Service:** Our US-based customer service team aims to respond to inquiries within 24 hours and offers hassle-free replacements for any issues covered under warranty.

For assistance, please visit the official TCL support website or contact their customer service directly. Refer to the contact information provided in your product packaging or on the TCL website.