

WORKPRO W121074AE

WORKPRO Mini Electric Screwdriver (Model W121074AE) Instruction Manual

1. INTRODUCTION

Thank you for choosing the WORKPRO Mini Electric Screwdriver. This precision tool is designed for delicate tasks requiring accuracy and efficiency, such as repairing smartphones, laptops, cameras, watches, and other small electronic devices. This manual provides essential information for safe operation, setup, maintenance, and troubleshooting to ensure optimal performance and longevity of your screwdriver.

2. SAFETY INFORMATION

- Always wear appropriate eye protection when operating power tools.
- Keep the tool and its accessories out of reach of children.
- Do not use the screwdriver near flammable liquids or gases.
- Ensure the tool is fully charged before use to avoid interruptions during delicate tasks.
- Avoid applying excessive force, as this may damage the tool or the workpiece.
- Do not expose the tool to water or extreme temperatures.

3. PACKAGE CONTENTS

Verify that all items are present in your package:

- WORKPRO Mini Electric Screwdriver (Model W121074AE)
- Magnetic Storage Case with Pop-Up Mechanism
- 36 S2 Steel Precision Bits
- 2 Pry Bars
- USB Type-C Charging Cable



Figure 1: Complete WORKPRO Mini Electric Screwdriver set, including the screwdriver, magnetic bit case, and various S2 steel bits.

4. PRODUCT OVERVIEW

The WORKPRO Mini Electric Screwdriver features a sleek aluminum alloy body, dual LED lights, and intuitive controls for efficient operation. The accompanying magnetic case not only stores the 36 S2 steel bits and 2 pry bars but also includes a built-in magnetizer/demagnetizer.



Figure 2: The WORKPRO Mini Electric Screwdriver in action, demonstrating its compact size and precision for intricate repairs on a drone.

5. SETUP

5.1 Charging the Screwdriver

Before first use, fully charge the screwdriver. Connect the provided USB Type-C charging cable to the charging port located at the end of the screwdriver and to a compatible USB power source. The LED indicators will show the charging status. A full charge takes approximately 60 minutes and provides enough power to tighten up to 410 screws.

POP-UP MECHANISM

Quick Access in One Press



Figure 3: The screwdriver connected via its Type-C port for charging, illustrating its 350mAh lithium-ion battery capacity.

5.2 Inserting and Removing Bits

The screwdriver features a magnetic chuck for easy bit insertion and removal. Simply push the desired S2 steel bit into the chuck until it is securely seated. To remove, pull the bit straight out. The magnetic design ensures bits are held firmly during use.

5.3 Using the Built-in Magnetizer/Demagnetizer

The magnetic storage case includes a magnetizer/demagnetizer. To magnetize a bit, slide it through the 'U+' slot. To demagnetize, slide it through the 'U-' slot. This feature helps hold tiny screws firmly to the bit, preventing drops.



Figure 4: A screwdriver bit being magnetized using the dedicated slot in the storage case, enhancing its ability to hold small screws.

6. OPERATING INSTRUCTIONS

6.1 Power On/Off and Rotation

The screwdriver has two buttons for operation:

- Press the **upper button** for forward (tightening) rotation.
- Press the **lower button** for reverse (loosening) rotation.

The screwdriver operates at 175 RPM with 0.3 N.m torque in electric mode. For tougher screws, you can continue to manually turn the screwdriver, providing up to 3 N.m of manual torque.

HIGH TORQUE POWER

READY FOR EFFICIENT WORK

ELECTRIC MODE

0.3 N.M

MANUAL MODE

3 N.M



Figure 5: The screwdriver being used on a speaker, illustrating its dual electric and manual torque capabilities.

6.2 LED Work Light

The screwdriver is equipped with dual LED lights that automatically illuminate when the screwdriver is in operation, providing clear visibility in dark or confined spaces.

BUILT-IN LED LIGHT

Bright Light for Tight Spaces



Figure 6: The screwdriver's LED lights illuminating the interior of a computer, highlighting its utility in low-light conditions.

6.3 Typical Applications

This precision screwdriver is ideal for:

- Repairing smartphones and tablets
- Servicing laptops and desktop computers
- Maintaining digital cameras and drones
- Adjusting eyeglasses and watches
- Small DIY projects and household repairs

IDEAL FOR EVERYDAY TASKS

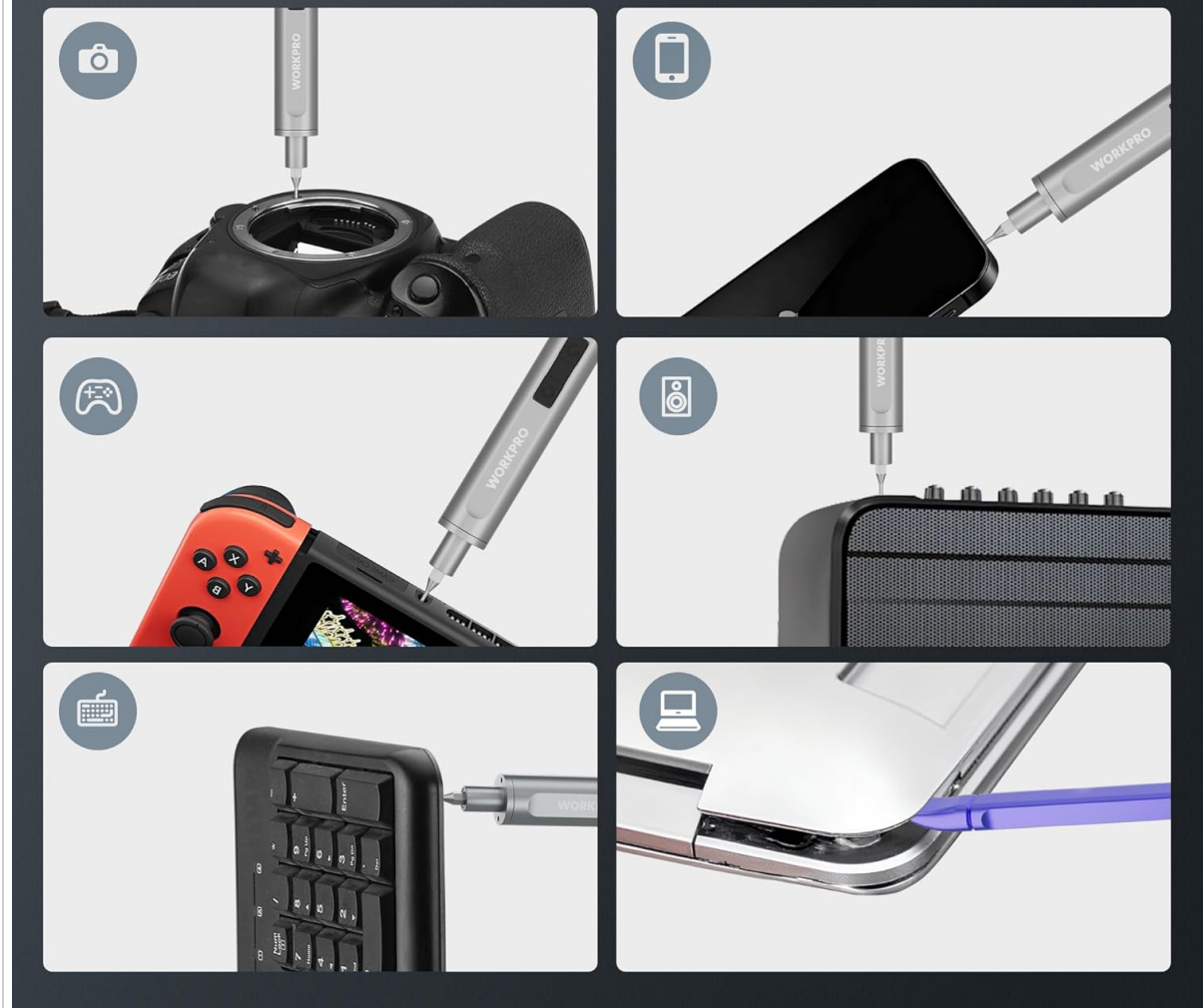


Figure 7: A collage showcasing the versatility of the screwdriver across various small electronic devices.

6.4 Product Video: Features and Operation

Video 1: This video demonstrates the pop-up mechanism of the bit case, the magnetic bit insertion, the screwdriver's operation (forward/reverse), and the LED light feature.

7. MAINTENANCE

7.1 Battery Care

To prolong the life of the 3.7V 350mAh lithium-ion battery, recharge the electric screwdriver every 3-6 months, especially if it is not used frequently.

7.2 Cleaning and Storage

Wipe the screwdriver and bits with a clean, dry cloth after each use. Store the screwdriver and all bits in the provided magnetic storage case to keep them organized and protected from dust and damage. The pop-up mechanism ensures easy access and secure storage.

RECHARGEABLE LITHIUM BATTERY

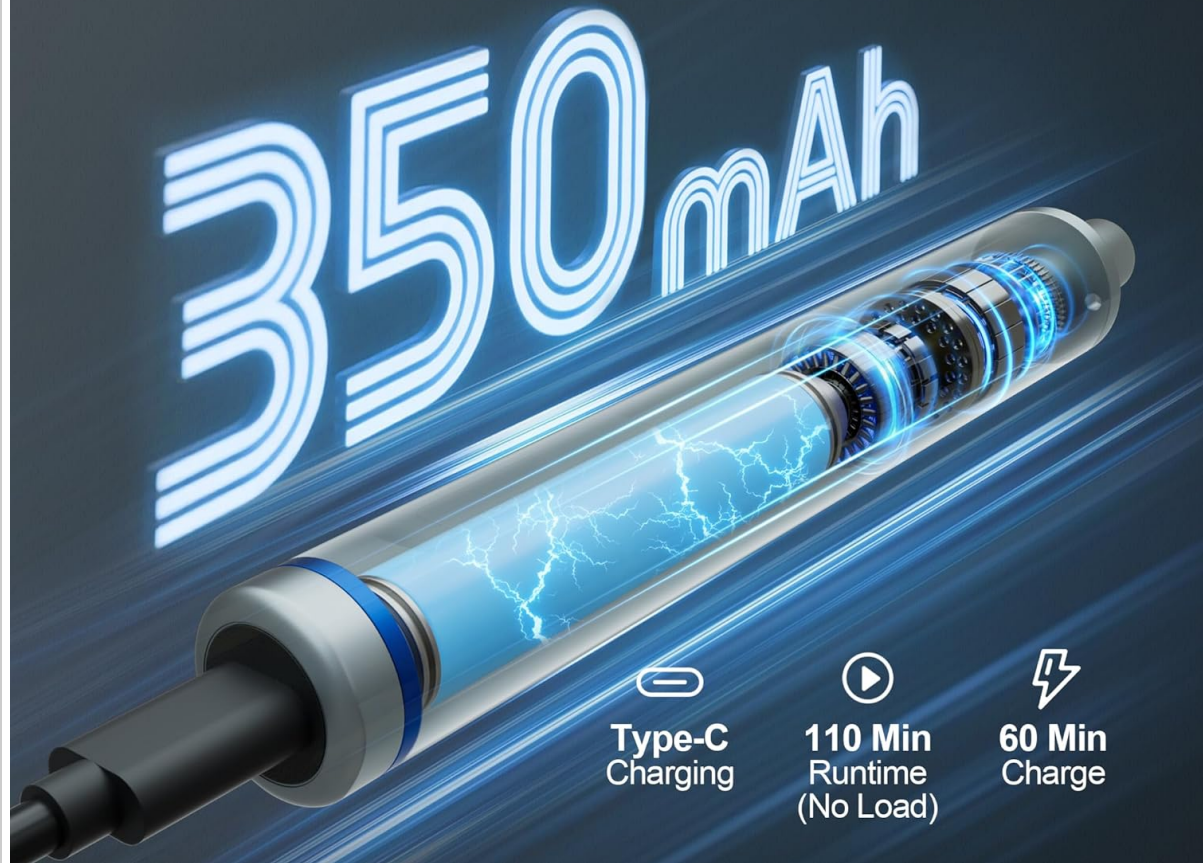


Figure 8: The magnetic storage case with its convenient pop-up mechanism, designed for organized and secure storage of the screwdriver and bits.

8. TROUBLESHOOTING

If you encounter any issues with your WORKPRO Mini Electric Screwdriver, please refer to the following common solutions:

- **Screwdriver not turning on:** Ensure the battery is fully charged. If the issue persists, try charging with a different USB Type-C cable and power adapter.
- **Bits not holding securely:** Verify that the bit is fully inserted into the magnetic chuck. If the bit's magnetism is weak, use the built-in magnetizer in the storage case.
- **Insufficient torque:** For very tight screws, apply manual force while operating the screwdriver in electric mode. The manual torque capability is 3 N.m.

9. SPECIFICATIONS

Feature	Specification
Brand	WORKPRO

Feature	Specification
Model Number	W121074AE
Battery Voltage	3.7V
Battery Capacity	350mAh Lithium-ion
No-load Speed	175 RPM
Electric Torque	0.3 N.m
Manual Torque	3 N.m
Charging Port	USB Type-C
Bit Material	S2 Steel
Number of Bits	36
Included Accessories	2 Pry Bars, Magnetic Storage Case
Item Weight	0.75 Pounds
Item Dimensions (L x W x H)	6.3 x 1.57 x 1.97 inches

10. WARRANTY AND SUPPORT

For warranty information, technical support, or service inquiries, please refer to the contact details provided with your product packaging or visit the official WORKPRO website. Keep your purchase receipt as proof of purchase.