

Cameron Sino xb-054

Cameron Sino 5200mAh Replacement Battery User Manual

For Philips BT6000, Model: xb-054, Part No. ICR18650-1S2P

1. INTRODUCTION

This manual provides essential information for the safe and effective use of your Cameron Sino 5200mAh / 19.24Wh replacement battery, designed for compatibility with the Philips BT6000 device. Please read these instructions carefully before installation and use.

2. IMPORTANT SAFETY INFORMATION

Observe the following safety precautions to prevent damage to the battery, device, or personal injury:

- Do not attempt to disassemble, open, or service the battery pack.
- Do not crush, puncture, short external contacts, or dispose of the battery in fire or water.
- Do not store the battery above 60°C (140°F).
- Replace the battery only with the battery pack specifically designated for your Philips BT6000 device.
- Avoid using third-party adapter chargers, as this may shorten battery life.
- The battery features built-in protection against over-charge, over-discharge, over-voltage, over-current, and over-heating.

3. PRODUCT SPECIFICATIONS

Specification	Detail
Brand	Cameron Sino

Model Number	xb-054
Part Number	ICR18650-1S2P
Compatibility	Philips BT6000
Battery Type	Li-ion (Lithium Ion)
Voltage	3.7V
Capacity	5200mAh / 19.24Wh
Dimensions	66.60 x 39.00 x 20.50mm
Weight	96.0g

4. SETUP AND INSTALLATION

Follow these steps for proper battery installation:

1. **Verify Compatibility:** Before installation, carefully check your device model and the original battery part number to ensure compatibility with this replacement battery. This battery is compatible with Philips BT6000 and part number ICR18650-1S2P.
2. **Prepare Device:** Ensure your Philips BT6000 device is powered off and disconnected from any power source.
3. **Remove Old Battery:** Refer to your Philips BT6000 device's original manual for instructions on safely removing the existing battery.
4. **Install New Battery:** Insert the Cameron Sino replacement battery into the battery compartment. Ensure the battery fits perfectly and the connector is correctly aligned.
5. **Connect Plug:** Confirm that the battery's plug is securely connected to the corresponding port within the device.
6. **Secure Compartment:** Close and secure the battery compartment according to your device's design.



Image 1: Cameron Sino 5200mAh replacement battery.



Image 2: Top view of the battery with product label.

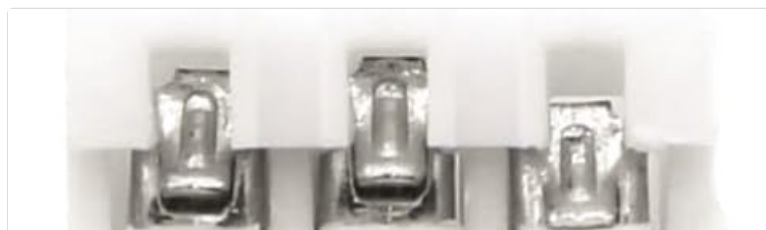




Image 3: Close-up of the battery's connector.

5. OPERATING INSTRUCTIONS (CHARGING)

After installation, the battery is ready for use. For optimal performance and longevity:

- Charge the battery using the original charger provided with your Philips BT6000 device.
- Avoid using unapproved or third-party chargers, as this can negatively impact battery life and safety.
- The Li-ion battery technology offers extended run time with no memory effect, meaning you can charge it at any time without needing to fully discharge it first.

6. MAINTENANCE

To ensure the longevity and performance of your battery:

- Store the battery in a cool, dry place when not in use.
- Avoid exposing the battery to extreme temperatures, direct sunlight, or moisture.
- If the device will not be used for an extended period, it is advisable to charge the battery to approximately 50% before storage.
- Do not leave the battery fully discharged for long periods, as this can lead to irreversible damage.

7. TROUBLESHOOTING

If you encounter issues with your replacement battery, consider the following:

- **Battery Not Charging:** Ensure the charger is properly connected to both the device and a power outlet. Verify that the charger is the original or an approved compatible charger.
- **Device Not Powering On:** Check that the battery is correctly installed and its connector is securely attached. Ensure the battery has sufficient charge.
- **Shortened Battery Life:** Ensure you are using the original charger. Avoid extreme temperatures during use and storage. If the issue persists, the battery may need replacement.
- **Overheating:** If the battery or device becomes excessively hot during charging or use, immediately disconnect it from the power source and cease use. Contact support if this occurs frequently.

8. WARRANTY AND SUPPORT

Cameron Sino provides a 30-day refund policy for this product. For any questions or concerns regarding your battery, please contact our customer support. We aim to respond to inquiries within 24 hours. For support, please refer to the contact information provided with your purchase or visit the official Cameron Sino store page.