



[Manuals.plus](#) /

› [GATERON](#) /

› GATERON GT60 PRO Magnetic Keyboard PCB User Manual

GATERON KS-GT60-002-BG-Pro

GATERON GT60 PRO Magnetic Keyboard PCB User Manual

Model: KS-GT60-002-BG-Pro

1. INTRODUCTION

The GATERON GT60 PRO Magnetic Keyboard PCB is an advanced component designed for high-performance magnetic keyboards. This PCB is specifically engineered for 60% layout magnetic keyboards and offers adjustable actuation, low latency, and a robust waterproof design. It integrates cutting-edge technology to provide a superior typing and gaming experience.

Key features include 8 independent scanning cores, a true full-key rollover matrix, dynamic RT AI algorithm for signal optimization, and an immersion gold circuit for enhanced signal integrity and corrosion resistance.

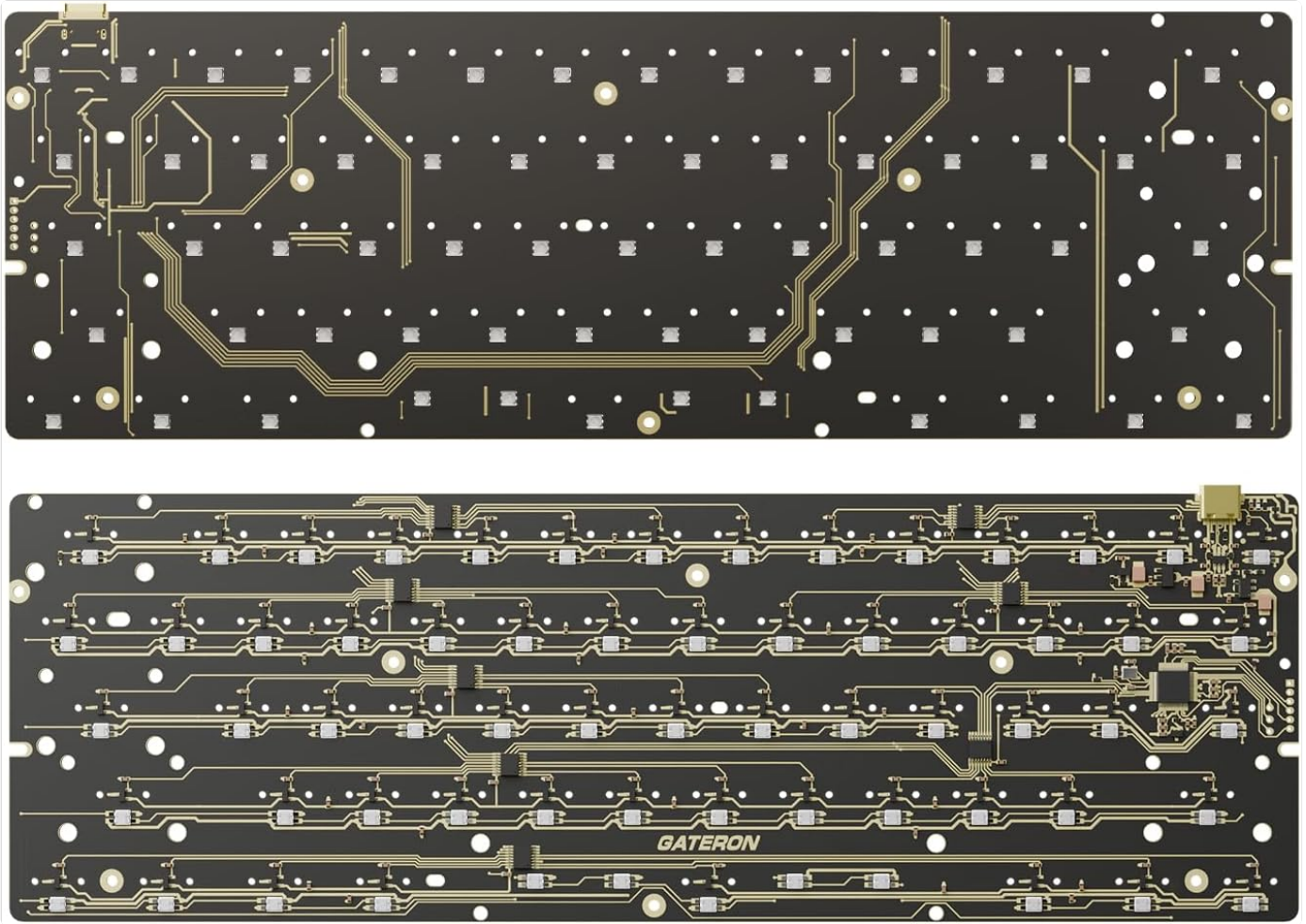


Image: The GATERON GT60 PRO Magnetic Keyboard PCB, showcasing its compact 60% layout.

2. SETUP AND INSTALLATION

This PCB is exclusively designed for 60% layout magnetic keyboards and is not compatible with mechanical keyboards. Ensure your keyboard chassis and switches are designed for magnetic PCB integration.

2.1 Compatibility

- Compatible with 60% layout magnetic keyboards.
- Compatible with GATERON Magnetic Jade series switches with exclusive fine-tuning. If you are unsure about your magnetic switch compatibility, please contact GATERON support.

2.2 Installation Steps

1. Carefully unbox the GATERON GT60 PRO PCB.
2. Align the PCB with your 60% magnetic keyboard plate and chassis.
3. Install compatible magnetic switches into the PCB. Ensure proper alignment and seating.
4. Secure the PCB within the keyboard chassis using appropriate screws or mounting mechanisms.
5. Connect the PCB to your computer using a USB-C cable. The TYPE-C port is located on the PCB.

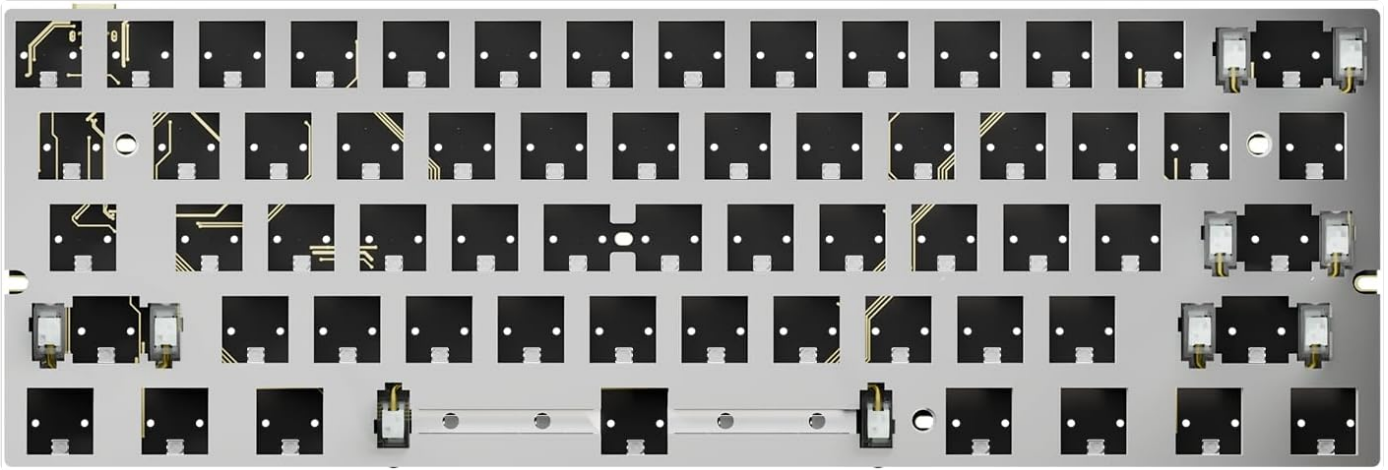


Image: An exploded view illustrating the assembly of a magnetic keyboard, showing the PCB, mounting plate, and stabilizers.

Your browser does not support the video tag.

Video: An unboxing and overview of the GATERON GT60 Pro HE PCB, demonstrating its physical appearance and initial setup components.

3. OPERATING INSTRUCTIONS

The GATERON GT60 PRO PCB offers advanced features for precise control and customization.

3.1 Adjustable Actuation

The PCB supports adjustable actuation, allowing users to customize the key press sensitivity. This feature is managed through the web-based driver module.

3.2 Web-Based Driver Module

Access the web-based driver system for configuration and firmware updates. To open the driver system, press **FN + P** on your keyboard. This module allows for continuous firmware updates, algorithm improvements, and optimization of operation accuracy.

RGB Lighting Effects

Bottom mounted LED and space are enhanced with 5 ARGB lamp beads

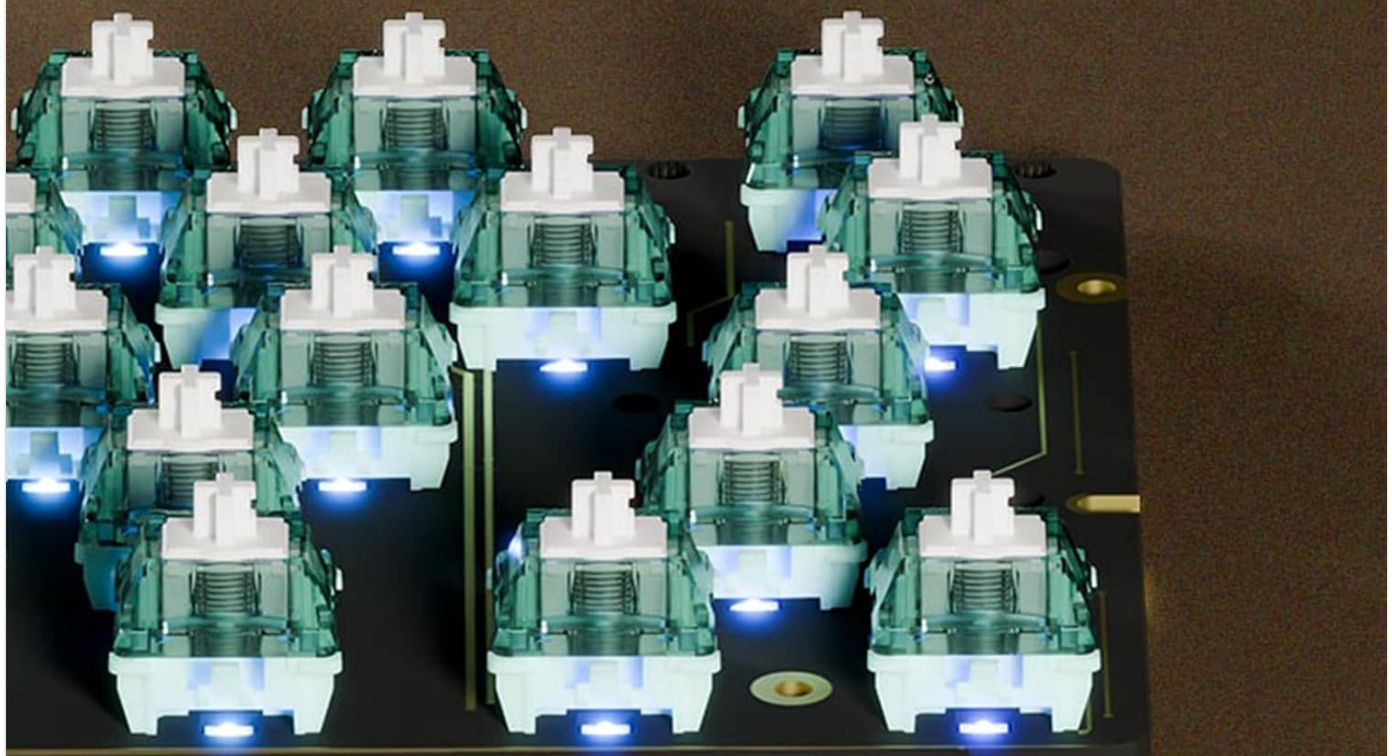


Image: A visual representation of the web-based driver module, highlighting the FN+P shortcut for access and its capabilities for continuous updates and optimization.

3.3 Performance and Latency

The PCB features 8 independent scanning cores, with a single key scan rate of 256k and full key scan rate of 32K+. It builds a true full-key rollover matrix and utilizes a dynamic RT AI algorithm with software and hardware collaborative filtering to eliminate signal jitter and optimize the signal path. This results in ultra-low latency, as low as 0.07~0.08ms, and RT Accuracy of 0.004-0.01, approaching human reaction speed limits.

Web - based Driver Module, OTA Online Upgrade

One-click opening is super convenient

(FN + P)

Platform-based drive

Continuous firmware updates, algorithm improvements

Continuous optimization of operation accuracy

Image: A graphic illustrating the high RT Accuracy of the PCB, indicating a range of 0.004-0.01 for precise input registration.

3.4 RGB Lighting Effects

The PCB supports RGB lighting effects. The bottom-mounted LEDs and space are enhanced with 5 ARGB lamp beads, providing customizable illumination for your keyboard.

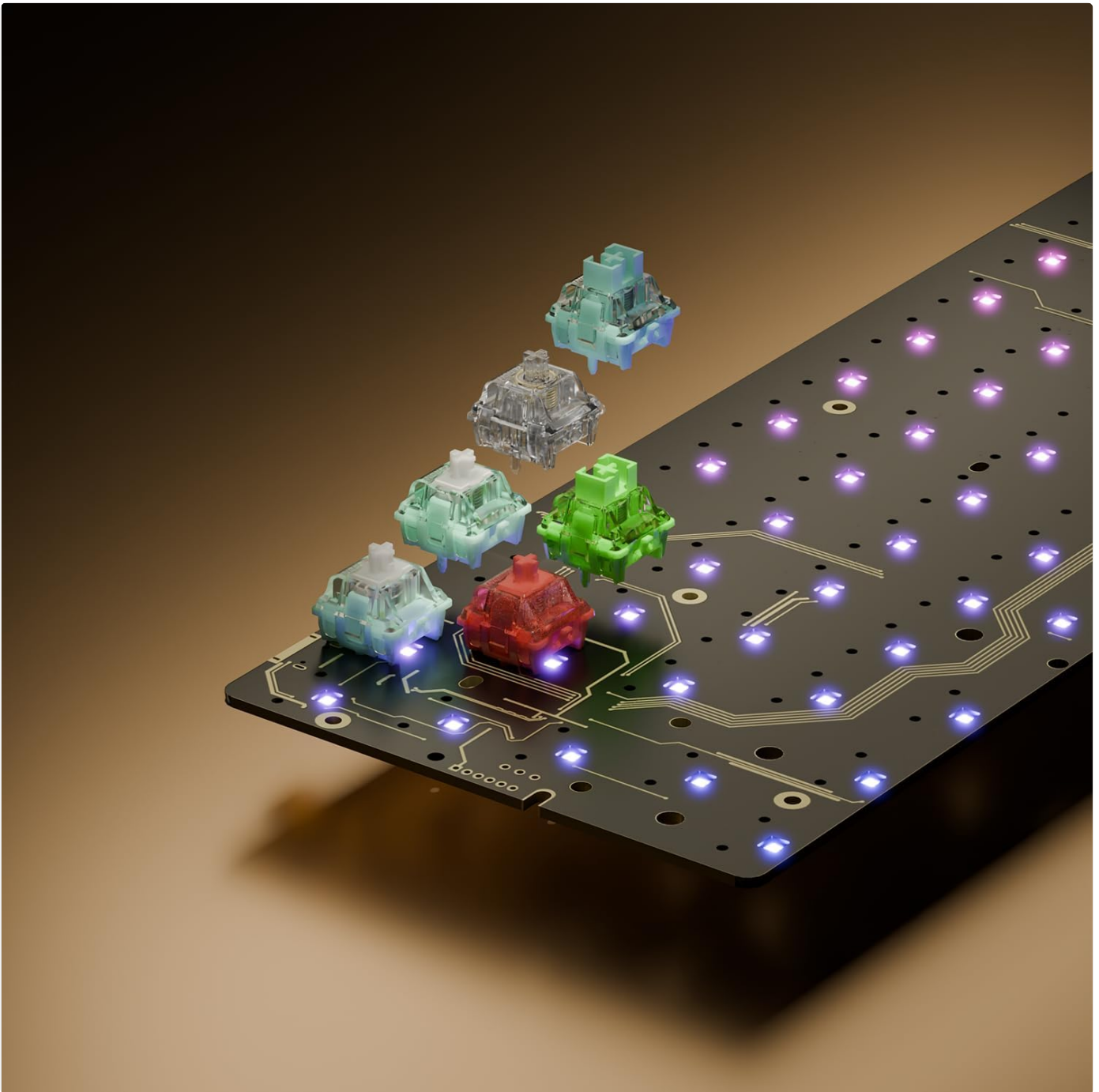


Image: A close-up view of magnetic switches installed on the PCB, demonstrating the vibrant RGB lighting effects from the bottom-mounted LEDs.

4. MAINTENANCE

The GATERON GT60 PRO PCB is designed for durability and ease of maintenance.

4.1 Waterproofing

The PCB features full coverage nano-coating, providing excellent resistance against spills. Liquids such as cola, coffee, or milk tea will not harm the PCB, allowing for direct washing. **Important: The TYPE-C port is NOT waterproof. Ensure the TYPE-C port is dry before connecting to power or data.**

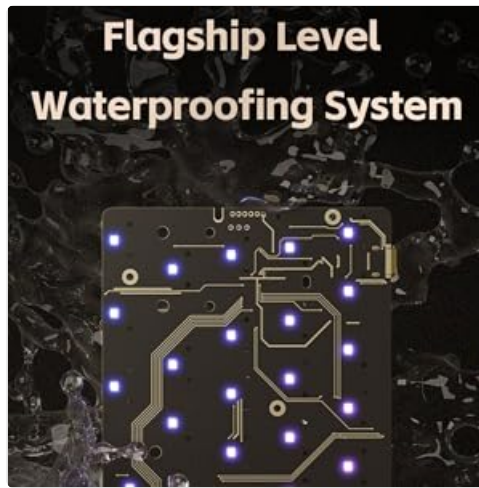


Image: A visual representation of the PCB's advanced waterproofing system, showing liquid repelling from the surface.

4.2 Cleaning

For general cleaning, use a soft, dry cloth to wipe down the PCB. If liquid spills occur, you may rinse the PCB (excluding the TYPE-C port) with clean water. Ensure the PCB is completely dry before reassembling or connecting to power.

5. TROUBLESHOOTING

If you encounter issues with your GATERON GT60 PRO PCB, refer to the following common troubleshooting tips:

- **Keyboard not recognized:** Ensure the USB-C cable is securely connected to both the PCB and your computer. Try a different USB-C port or cable.
- **Keys not responding:** Verify that all magnetic switches are properly seated on the PCB. Check for any debris or obstructions under the switches.
- **Incompatible magnetic switches:** This PCB is specifically designed for GATERON Magnetic Jade series switches. If you are using other magnetic switches and experience issues, they may not be fully compatible. Contact GATERON support for clarification.
- **Driver module access issues:** Ensure your keyboard is connected and try pressing FN+P again. Check your internet connection if the web-based module is not loading.
- **RGB lighting not working:** Check the settings within the web-based driver module to ensure RGB effects are enabled and configured correctly.

For further assistance, please refer to the GATERON official website or contact their customer support.

6. SPECIFICATIONS

Feature	Detail
Model Name	GT60 PRO HE PCB
Item Model Number	KS-GT60-002-BG-Pro
Brand	GATERON
Compatible Devices	Laptop, PC
Connectivity Technology	USB-C
Keyboard Description	Magnetic

Feature	Detail
Recommended Uses	Gaming
Special Features	Pre-Lubed, Freely Setting Pre-Travel
Number of Keys	61
Style	Gaming
Material	Plastic
Item Weight	1.19 pounds
Package Dimensions	13.97 x 6.18 x 1.75 inches
Manufacturer	Gateron
Country of Origin	China

7. WARRANTY AND SUPPORT

For warranty information and technical support regarding your GATERON GT60 PRO Magnetic Keyboard PCB, please refer to the official GATERON website or contact GATERON customer service directly. The manufacturer, Gateron, is responsible for product support.

You can visit the [GATERON Store on Amazon](#) for more product information and contact details.

For specific inquiries about magnetic switch compatibility, it is recommended to contact GATERON support before purchase or installation if you are using switches other than the GATERON Magnetic Jade series.