

## M100

# Generic M100 Clip-On Wireless Ear Headphones User Manual

Model: M100 | Brand: Generic

### INTRODUCTION

This manual provides detailed instructions for the operation and maintenance of your Generic M100 Clip-On Wireless Ear Headphones. Please read this manual thoroughly before using the product to ensure proper function and longevity.

### PACKAGE CONTENTS

- Generic M100 Clip-On Wireless Ear Headphones (Left and Right)
- Charging Case with Smart LED Touch Screen
- USB-C Charging Cable
- User Manual

### PRODUCT OVERVIEW

The Generic M100 headphones feature a unique clip-on design for comfort and stability, coupled with a smart LED touch screen on the charging case for enhanced control.



**Figure 1:** Generic M100 Clip-On Wireless Ear Headphones and Charging Case. The earbuds are shown nestled in their purple charging case, which features a front-facing smart LED touch screen.

# Smart Screen Touch IC

Lossless sound

Dual core 5.4

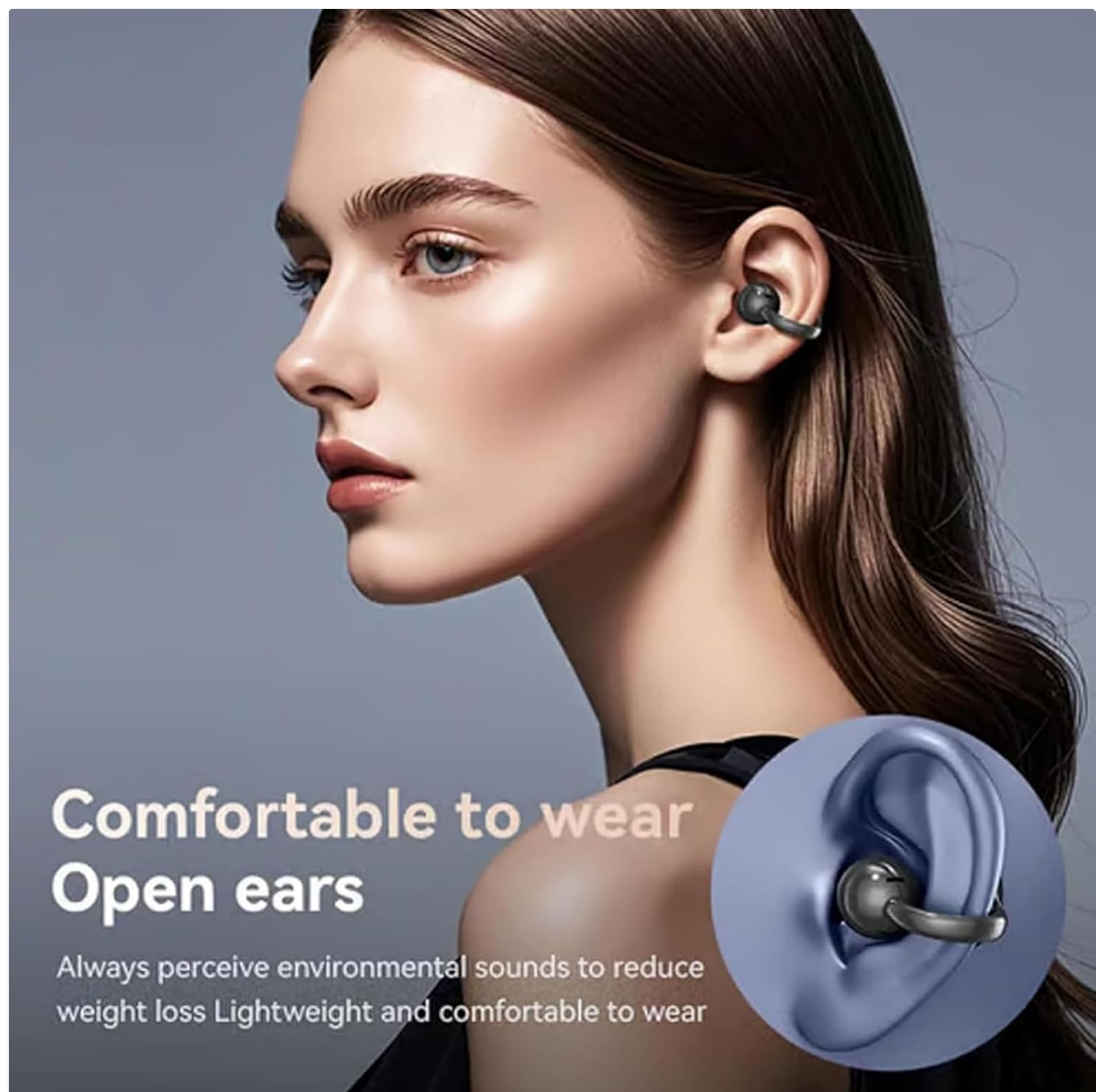
TYPE-C charge



**Smart screen**

**Noise reduction**

**Figure 2:** Smart Screen Touch IC features. This image highlights key features such as lossless sound, dual-core 5.4 Bluetooth, Type-C charging, Hi-Res Audio, and noise reduction, all managed via the smart screen.



## Comfortable to wear Open ears

Always perceive environmental sounds to reduce weight loss  
Lightweight and comfortable to wear

**Figure 3:** Comfortable to wear, open ears design. The image shows an earbud clipped onto a model's ear, demonstrating the ergonomic fit that allows for ambient sound awareness.





**Figure 4:** Directional sound technology. This graphic illustrates how the earbuds deliver sound directly to the ear canal while minimizing sound leakage, enhancing privacy and audio quality.

## SETUP AND PAIRING

### 1. Initial Charge

Before first use, fully charge the headphones and charging case. Connect the provided USB-C cable to the charging port on the case and to a compatible USB power source. The smart screen will display charging status.

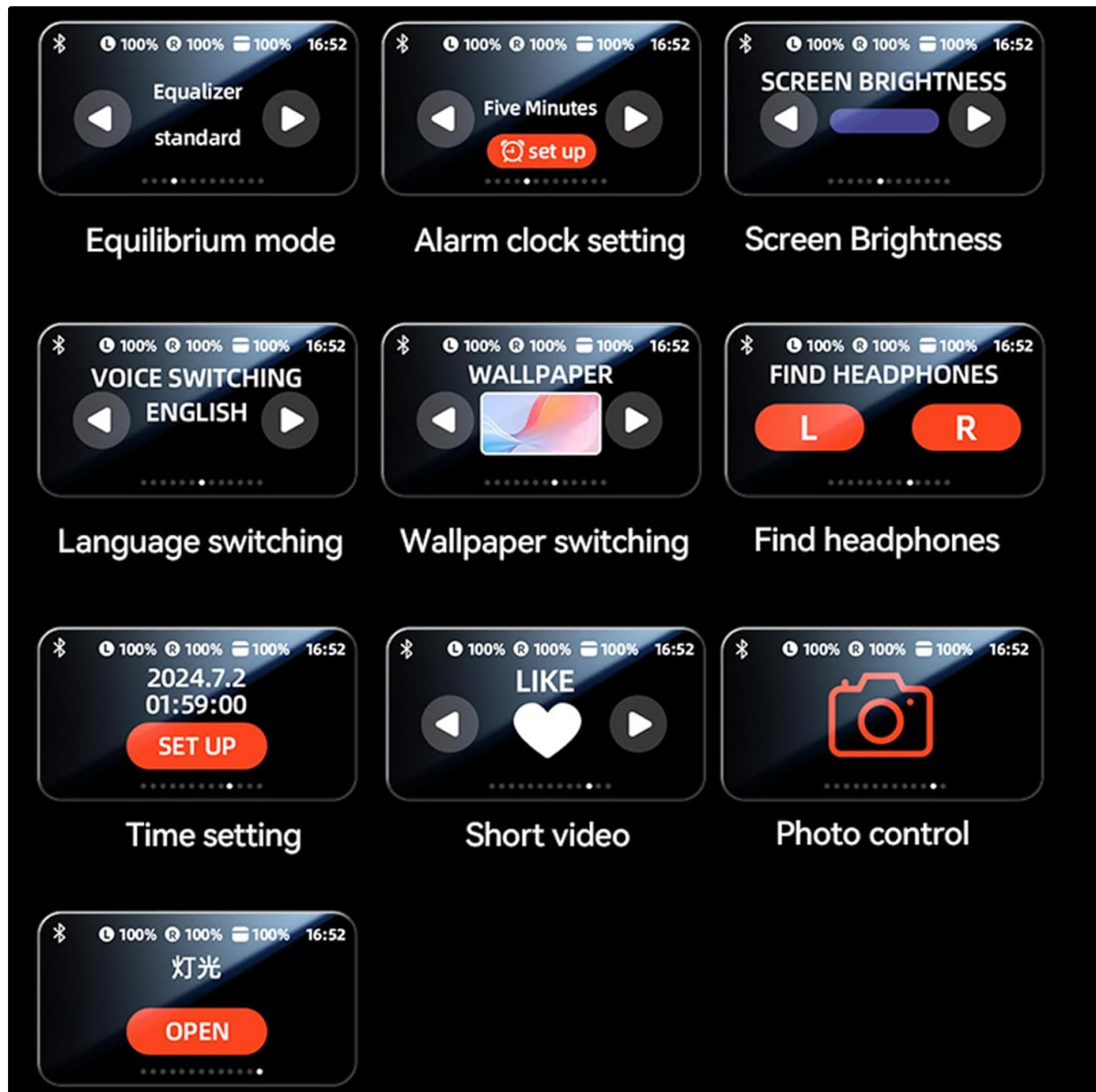
### 2. Power On and Pairing

1. Open the charging case. The headphones will automatically power on and enter pairing mode.
2. On your device (smartphone, tablet, etc.), enable Bluetooth and search for available devices.
3. Select "M100" from the list of found devices.
4. Once connected, the smart screen on the charging case will indicate a successful Bluetooth connection.

The headphones will automatically reconnect to the last paired device when removed from the case, if Bluetooth is enabled on the device.

### Smart LED Touch Screen Functions

The charging case features a smart LED touch screen that allows for various controls without needing to access your connected device. Swipe left or right on the screen to navigate through the functions.



**Figure 5:** Smart LED Touch Screen Interface. This image displays various touch screen options including music equalizer, alarm clock settings, screen brightness adjustment, language switching, wallpaper selection, 'Find Headphones' feature, time setting, short video playback, and photo control.

- **Time and Date Display:** View current time and date.
- **Battery Level:** Monitor battery status of both earbuds and the charging case.
- **Bluetooth Connection Status:** Confirm active connection.
- **Music Equalizer:** Adjust audio profiles (e.g., standard, bass boost).
- **Find Headphones:** Activate a sound on the earbuds to locate them if misplaced.
- **Photo Control:** Remotely trigger your phone's camera shutter.
- **Adjust Brightness:** Control the screen's illumination.
- **Set Alarm:** Configure alarms directly from the case.
- **Adjust Song Volume & Skip Songs:** Basic music playback controls.

- **Display Lyrics:** View lyrics for currently playing songs (feature availability may vary).
- **Language Switching:** Change the interface language.
- **Wallpaper Switching:** Customize the screen background.

## Music and Call Control (via Earbuds)

The earbuds themselves also feature touch controls for common functions:

- **Play/Pause:** Single tap on either earbud.
- **Next Track:** Double tap on the right earbud.
- **Previous Track:** Double tap on the left earbud.
- **Answer/End Call:** Single tap on either earbud.
- **Reject Call:** Press and hold either earbud for 2 seconds.
- **Activate Voice Assistant:** Triple tap on either earbud.

## ADAPTIVE NOISE REDUCTION

---

The M100 headphones are equipped with adaptive noise reduction technology. Built-in 16mm dynamic speakers provide 360° Hi-Fi stereo sound. This technology enhances clear vocals and rich bass, contributing to an immersive listening experience by minimizing ambient distractions.

## COMFORT AND FIT

---

The unique C-shaped clip-on design ensures a comfortable and secure fit for various ear shapes. Weighing only 5.2g per earbud, they provide a feather-light experience, suitable for extended wear without discomfort. The "open ears" design allows you to remain aware of your surroundings while enjoying audio.

## BATTERY LIFE AND CHARGING

---

The M100 headphones offer up to 6 hours of playtime on a single charge. The charging case extends the total playtime to approximately 50 hours. The headphones utilize Bluetooth 5.4 technology for efficient energy consumption and stable connectivity.

### Charging the Earbuds

Place the earbuds back into the charging case. They will automatically begin charging. The smart screen on the case will display the individual battery levels of each earbud.

### Charging the Case

Connect the USB-C cable to the charging port on the case and to a power source. The smart screen will indicate the charging status of the case.

## WATERPROOF AND SWEATPROOF

---

With an IPX5 waterproof rating and a nano hydrophobic coating, the M100 headphones are designed to withstand rain and sweat. This makes them suitable for sports and outdoor activities, providing reliable performance in various conditions.

## SPECIFICATIONS

---

Feature	Detail
Model Name	M100 Clip On Ear Headphones
Connectivity Technology	Wireless (Bluetooth 5.4)
Audio Driver Type	Dynamic Driver (16mm)
Earpiece Shape	Clip-on
Noise Control Features	Adaptive Noise Reduction
Water Resistance Level	IPX5 Waterproof
Control Method	Touch (Earbuds & Case Screen)
Battery Life (Earbuds)	Up to 6 hours
Total Playtime (with Case)	Up to 50 hours
Charging Port	USB-C
Item Weight	3.2 ounces (total)
Material	Plastic, Rubber, Silicone

## TROUBLESHOOTING

- **No Sound/Low Volume:**
  - Ensure earbuds are properly seated in your ears.
  - Check the volume level on both your connected device and the earbud case.
  - Ensure earbuds are fully charged.
  - Reconnect the earbuds to your device.
- **Earbuds Not Pairing:**
  - Ensure both earbuds are out of the charging case and in pairing mode.
  - Turn off and on Bluetooth on your device.
  - Forget "M100" from your device's Bluetooth list and attempt to pair again.
  - Ensure earbuds and case are charged.
- **Charging Case Screen Unresponsive:**
  - Ensure the charging case has sufficient battery.
  - Try connecting the charging case to a power source.

## SAFETY INFORMATION

- Do not expose the headphones or charging case to extreme temperatures or direct sunlight.
- Avoid dropping or applying excessive force to the product.
- Keep out of reach of children and pets.
- Clean the earbuds and case with a soft, dry cloth. Do not use harsh chemicals.
- Prolonged listening at high volumes may cause hearing damage.



## WARRANTY AND SUPPORT

---

For warranty information and customer support, please refer to the documentation included with your product or contact the manufacturer directly. Keep your proof of purchase for any warranty claims.