

**BDFHYK BD-05-CE07-00010BK-000-W**

# BDFHYK 5.6ft FRP Hard Tri-Fold Truck Bed Tonneau Cover for 2022-2025 Toyota Tundra (66.7in Bed) - Instruction Manual

## 1. INTRODUCTION AND OVERVIEW

This manual provides detailed instructions for the installation, operation, and maintenance of your BDFHYK 5.6ft FRP Hard Tri-Fold Truck Bed Tonneau Cover. Designed for 2022-2025 Toyota Tundra models with a 5.5ft (66.7in) bed, this cover offers robust protection and enhanced functionality for your truck bed.

The tonneau cover features a heavy-duty design constructed from fiberglass reinforced polymer (FRP) and double-layer PVC, supported by a black powder-coated aluminum frame. This construction ensures excellent scratch resistance, durability against wear, and resilience to environmental factors like hail. It is engineered to be waterproof, anti-UV, and anti-theft, safeguarding your cargo from elements and unauthorized access.



Figure 1: BDFHYK 5.6ft FRP Hard Tri-Fold Truck Bed Tonneau Cover installed on a red Toyota Tundra.



Figure 2: Construction details of the tonneau cover, highlighting materials and durability features.

## 2. PACKAGE CONTENTS

Before beginning installation, please verify that all components are present and undamaged. The package should contain the following items:

- BDFHYK Hard Tri-Fold Tonneau Cover Assembly
- Instruction Manual
- 2000\*30\*6.3M Tape (Seal Strip)
- Screw Couplings
- Replacement Plastic Hook
- Handle
- Tightening Band Spare Part
- M6 Cylindrical Nut
- 2.5mm Hex Key
- Clamp Foam Pad

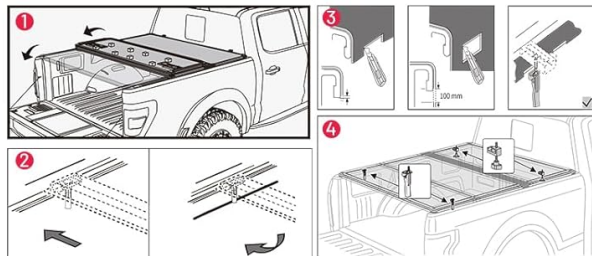
#### Step 4:

Fully unfold the cover and secure the rear clamps.

1. Pull down the rear clamp to vertical position.
2. Slide rear clamp to bed rail.
3. Stick the clamp pad to mounting position on bed rail.
4. Turn the clamp handle to adjust rear clamp to proper length.
5. Hook the J-shaped clamp under the metal bed rail lip and push the clamp handle to vertical position.

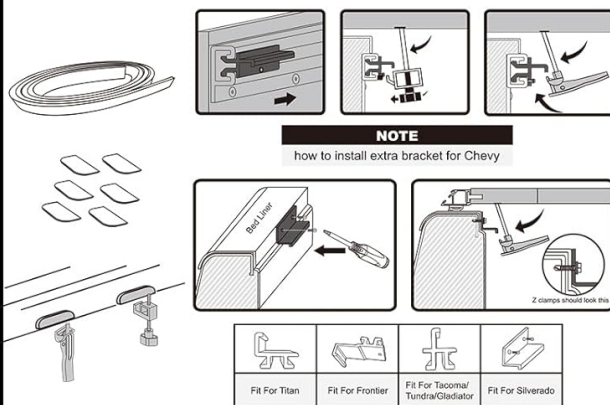
#### Note:

The clamps may not precisely vertical.



#### Step 5:

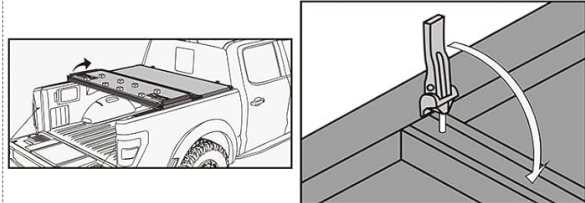
1. Seal the taigate with seal foam strip
2. Stick the front sealtrip on the front of bed rail.



#### Step 6:

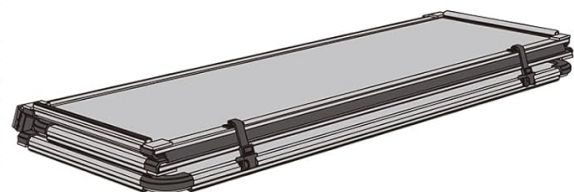
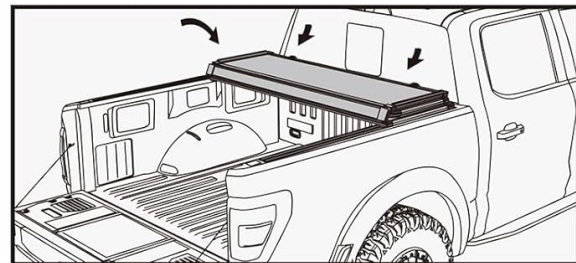
##### Fold up the cover

1. Open the tailgate and release the rear clamps.
  2. Fold up the first panel.
- Fold and secure the rear clamps back to original plisition



#### Step 7:

1. Fold up the second panel.
2. Secure safety buckles.



Please check clamps and secure straps are tight.

Figure 3: Included components and tools for installation.

## 3. SETUP AND INSTALLATION

Installation of the BDFHYK tonneau cover is designed to be quick and requires no drilling. Follow these steps for a secure fit.

### 3.1. Preparation

1. Clean the bulkhead and bed rail surfaces thoroughly before installation to ensure proper adhesion of seals.
2. For Ford trucks, stick the front seal strip onto the front of the bed rail.

### 3.2. Positioning the Cover

3. Place the cover assembly on both sides of the front truck bed, against the cab.
4. Release the safety buckles on the cover.

### 3.3. Securing the Front Clamps

5. Pull down the front clamp to a vertical position.
6. Loosen the knob and slide the front clamp to the bed rail.
7. Stick the clamp pad to the mounting position on the bed rail.
8. Hook the J-shaped clamp under the metal bed rail lip and tighten the knob.

**Note:** Tighten only until snug. Do NOT over-tighten. Cutting the bedliner may be necessary for proper clamp placement. The clamps may not be precisely vertical.

### 3.4. Securing the Rear Clamps

9. Fully unfold the cover and secure the rear clamps.
10. Pull down the rear clamp to a vertical position.
11. Slide the rear clamp to the bed rail.
12. Stick the clamp pad to the mounting position on the bed rail.
13. Turn the clamp handle to adjust the rear clamp to the proper length.
14. Hook the J-shaped clamp under the metal bed rail lip and push the clamp handle to a vertical position.

**Note:** The clamps may not be precisely vertical.

### 3.5. Tailgate Seal

15. Seal the tailgate with the foam seal strip.



# INCLUDED INSTRUCTION CHART

## - QUICK INSTALLATION IN 15 MINUTES



- 1 Instruction Manual
- 2 2000\*30\*6 3M Tape
- 3 TY Aluminum Block



- 4 Screw Coupling
- 5 Replacement Plastic Hook
- 6 2.5mm Hex Key



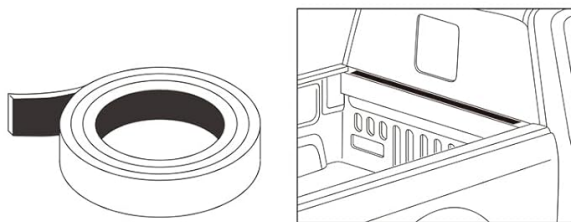
- 7 Handle
- 8 Tightening Band Spare Part
- 9 M6 Cylindrical nut



- 10 Clamp Foam Pad

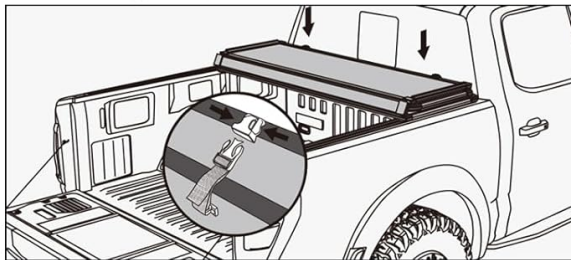
### Step 1:

1. Clean the bulkhead and bedrail before installation.
2. For Ford truck stick the front seal strip on the front of bed rail.



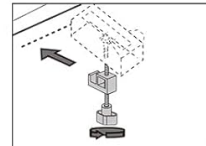
### Step 2:

1. Place cover assembly on both side of front truck bed against the cab.
2. Release safety buckles.



### Step 3:

1. Pull down the front clamp to vertical position.
2. Loosen the knob and slide front clamp to bed rail.
3. Stick the clamp pad to mounting position on bed rail.
4. Hook the J-shaped clamp under the metal bed rail lip and tighten the knob.



#### Note:

Hand tighten ONLY.  
DO NOT over tighten.  
Cutting the bedliner is necessary.  
The clamps may not precisely vertical.

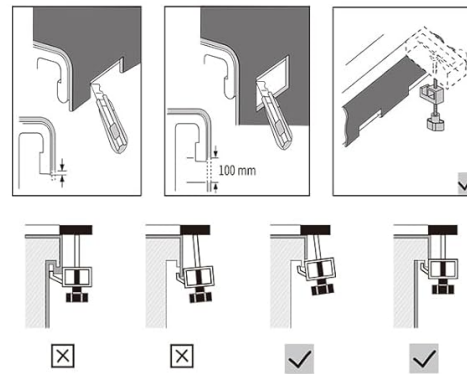


Figure 4: Detailed installation steps for securing the cover and applying the tailgate seal.

### 3.6. Installation Videos

Your browser does not support the video tag.

Video 1: Step-by-step guide on installing a Toyota Tundra FRP Hard Tri-fold Tonneau Cover. This video demonstrates the process from unpacking to final securing.

Your browser does not support the video tag.

Video 2: Overview of the BDFHYK Hard Tri-Fold Truck Bed Tonneau Cover, showcasing its features and ease of use.

Your browser does not support the video tag.

Video 3: General installation guide for a Tonneau Cover, demonstrating common steps and techniques.

## 4. OPERATING INSTRUCTIONS

The tri-fold design allows for flexible use of your truck bed. The cover can be easily folded and secured to provide access to a portion or the entirety of your truck bed.

#### 4.1. Folding the Cover

1. Release the rear clamps by pulling the handles downwards and disengaging them from the bed rails.
2. Fold the first panel towards the cab.
3. Fold the second panel towards the cab, stacking it on top of the first.
4. Secure the folded panels using the durable safety straps and buckles provided. This allows the cover to remain in a 2/3 open position, suitable for transporting larger items while keeping the front section covered.

#### 4.2. Unfolding the Cover

5. Release the safety straps and buckles.
6. Carefully unfold the panels one by one towards the tailgate.
7. Once fully extended, engage the rear clamps by hooking them under the bed rail lip and pushing the handles upwards until they are secure.



Daily commute (high-speed driving)



Move long distances



Extreme weather protection



Anti-theft protection of goods

Figure 5: Various operational scenarios for the tonneau cover, including partial opening and full closure.

## 5. MAINTENANCE

Regular maintenance will ensure the longevity and optimal performance of your tonneau cover.

- **Cleaning:** Clean the cover regularly with mild soap and water. Avoid abrasive cleaners or solvents that could damage the FRP/PVC surface or the aluminum frame.
- **Seals:** Periodically inspect the weather seals around the perimeter of the cover and along the folds for any signs of wear or damage. Replace if necessary to maintain waterproof integrity.
- **Hardware:** Check all clamps, latches, and mounting hardware for tightness and proper function. Tighten any loose components as needed.
- **Drain Tubes:** Ensure the drain tubes are clear of debris to allow water to properly exit the truck bed.

## 6. TROUBLESHOOTING

If you encounter any issues with your tonneau cover, refer to the following common troubleshooting tips:

- **Water Leakage:** If water is leaking into the bed, first check the installation of the front seal strip and ensure it is firmly pressed against the bulkhead. Inspect all perimeter seals and the seals between the panels for any gaps or damage. Ensure all clamps are securely tightened.
- **Cover Not Latching Securely:** Verify that the bed rails are clean and free of obstructions. Check the alignment of the cover on the bed rails. Ensure the clamps are properly positioned and tightened according to the installation instructions.
- **Difficulty Folding/Unfolding:** Ensure there is no debris obstructing the hinges or seals. Check that the clamps are fully disengaged before attempting to fold the cover.

## 7. SPECIFICATIONS

Feature	Specification
Brand	BDFHYK
Model Number	BD-05-CE07-00010BK-000-W
Style	Tri Fold Hard
Exterior Finish	Aluminum
Material	Aluminum, Fiberglass, Double Layer PVC
Lock Type	Latch
Vehicle Fitment	2022-2025 Toyota Tundra 5.5 ft (66.7 in) Bed
Item Weight	60.9 pounds
Package Dimensions	70 x 27 x 5.1 inches

## 8. WARRANTY AND SUPPORT

For warranty information or technical support, please refer to the contact details provided with your purchase documentation or visit the official BDFHYK website. Ensure you have your product model number (BD-05-CE07-00010BK-000-W) and purchase date available when contacting support.

