

DEWENWILS PTW04

DEWENWILS Pool Pump Timer: Heavy Duty Outdoor WiFi Timer Box (Model PTW04) Instruction Manual

INTRODUCTION

This manual provides detailed instructions for the installation, operation, and maintenance of your DEWENWILS PTW04 Outdoor WiFi Pool Pump Timer. This heavy-duty timer box is designed for controlling pool pumps, water heaters, and other high-power outdoor appliances, offering versatile scheduling and smart control capabilities.

Key Features

- **Versatile Timer Modes:** Offers programmable, countdown, random, and astronomical modes to optimize energy usage.
- **Remote & Voice Control:** Compatible with DEWENWILS and Smart Life apps, Alexa, and Google Assistant for convenient control.
- **Easy Wiring:** Simplified wiring system with an intuitive rotary dial interface for straightforward installation.
- **Heavy-Duty & Weatherproof:** Rated for 40A, 3HP, 240VAC operation, with flame-retardant PC housing and IP44 waterproof rating for outdoor durability. Operates reliably from -40°F to 140°F.
- **Wide Compatibility:** Ideal for water heaters, filters, spas, irrigation systems, and landscape lighting. ETL certified for safety.

SAFETY INFORMATION

WARNING: Risk of Electric Shock. If wiring compartment insulator is not installed properly, inform the electrician if it is missing.

CAUTION: Before wiring and servicing, power to this time switch and the equipment it controls must be turned off at the main panel. Replace this insulator after wiring.

TYPE 3R RAIN-TIGHT ENCLOSURE: Grounding between metallic conduit is not provided by this enclosure. Grounding type bushings and jumper wire to control unit must be installed in accordance with the National Code Requirements.

- Not for Water Immersion.
- For supply connections, use copper wire AWG 8-18 suitable for 90°C (194°F).
- Use listed wiring connector for grounding terminals.
- Always close the door after use.

PACKAGE CONTENTS

Upon unboxing your DEWENWILS Pool Pump Timer, please ensure all the following items are present:

- DEWENWILS Outdoor WiFi Pool Pump Timer Box (Model PTW04)
- Instruction Manual
- Mounting hardware (screws, anchors)
- Jumper wires (if applicable for specific wiring configurations)
- Waterproof wire connectors/grommets

SETUP AND INSTALLATION

1. Mounting the Timer Box

The timer box is designed for outdoor use and can be mounted on a wall or post near your pool equipment. Ensure the mounting location is secure and allows for proper wiring access.

HIGH POWER POOL TIMER

Ideal for controlling heavy duty appliances

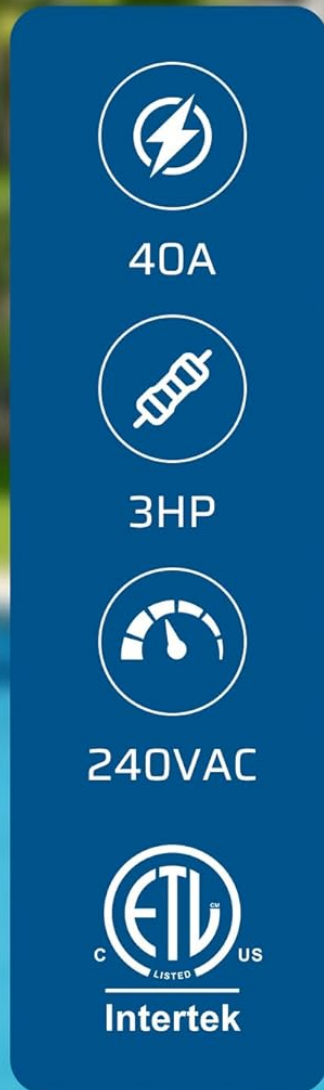


Image: The DEWENWILS Outdoor WiFi Pool Pump Timer box, gray in color, is shown mounted on an exterior wall next to a swimming pool. It highlights its high power capabilities (40A, 3HP, 240VAC) and ETL listing, indicating its suitability for heavy-duty outdoor appliances.

2. Wiring Instructions

IMPORTANT: All wiring should be performed by a qualified electrician with the power turned off at the main panel to prevent electric shock. Refer to the wiring diagrams provided inside the timer box lid and in the instruction manual for specific configurations.

The timer features an innovative wiring design that simplifies the installation process compared to traditional timer boxes. Ensure all connections are secure and waterproofed using the provided connectors.

CONTROL ONE 240VAC LOAD

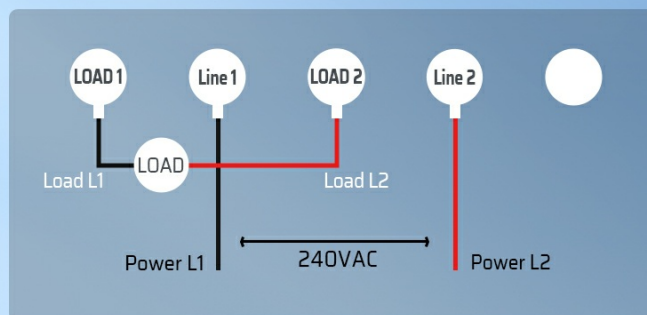


Image: A clear wiring diagram illustrating how to connect a single 240VAC load to the DEWENWILS Pool Pump Timer. It shows connections for Power L1, Load L1, Load L2, and Power L2, indicating a straightforward setup for one appliance.

CONTROL HOT WATER HEATER

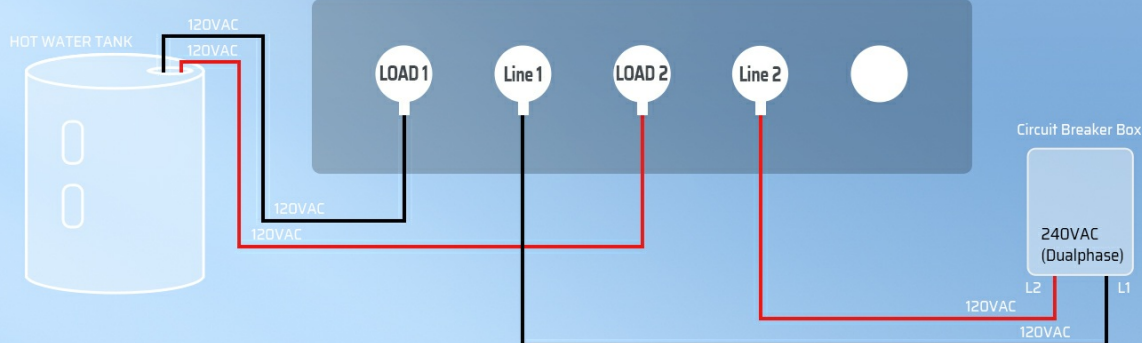


Image: A wiring diagram demonstrating how to connect a hot water heater to the DEWENWILS Pool Pump Timer. It details the 120VAC connections for the hot water tank and the 240VAC (Dual Phase) connections from the circuit breaker box to the timer's load and line terminals.

3. App Download and Setup

Download the DEWENWILS or Smart Life app from your smartphone's app store. Create an account and follow the in-app instructions to add your device.



Image: An open view of the DEWENWILS Pool Pump Timer, highlighting its internal components. Labels point to the Wi-Fi antenna, power indicator, power & programming load indicator, Wi-Fi indicator, IP44 weatherproof rating, knockouts, and terminal blocks, providing a clear overview of the device's features.

Scan the QR code on the timer box lid or in the manual to quickly find the app. Ensure your smartphone is connected to a 2.4GHz Wi-Fi network (5GHz networks are not supported).

For a visual guide on app setup, please refer to the video below:

Your browser does not support the video tag.

Video: This video provides a step-by-step guide on how to set up the DEWENWILS Digital Pool Pump Timer using the companion app. It covers the initial pairing process and basic scheduling functions.

4. Resetting the Device

If you encounter issues during pairing or need to reset the device, locate the reset button inside the timer box. Use a non-conductive tool (like a toothpick) to press and hold the reset button for 5 seconds until the Wi-Fi indicator light blinks rapidly.

For a visual guide on resetting the device, please refer to the video below:

Your browser does not support the video tag.

Video: This video demonstrates the reset steps for the DEWENWILS Smart Box. It shows how to locate and press the reset button to initiate the pairing mode or clear existing settings.

OPERATING INSTRUCTIONS

1. Manual Control

The timer box features a manual ON/OFF button for direct control of the connected appliance without using the app. Press the button once to toggle the power state.

2. App Control

Once paired with the DEWENWILS or Smart Life app, you can control your pool pump timer from anywhere with an internet connection. The app allows you to:

- Turn the device ON/OFF remotely.
- Set up various timer modes: programmable schedules, countdowns, random operation, and astronomical timing (sunrise/sunset).
- Monitor the device status.

REMOTE CONTROL



works with
DEWENWILS APP



works with
Smart life

VOICE CONTROL



* WiFi: 2.4GHz WiFi Only



works with
Hey Google

Image: A smartphone screen displays the DEWENWILS app interface for scheduling and controlling the pool pump timer. Below, a couple is shown interacting with a Google Assistant device, demonstrating voice control capabilities. This image highlights the convenience of remote and voice control.

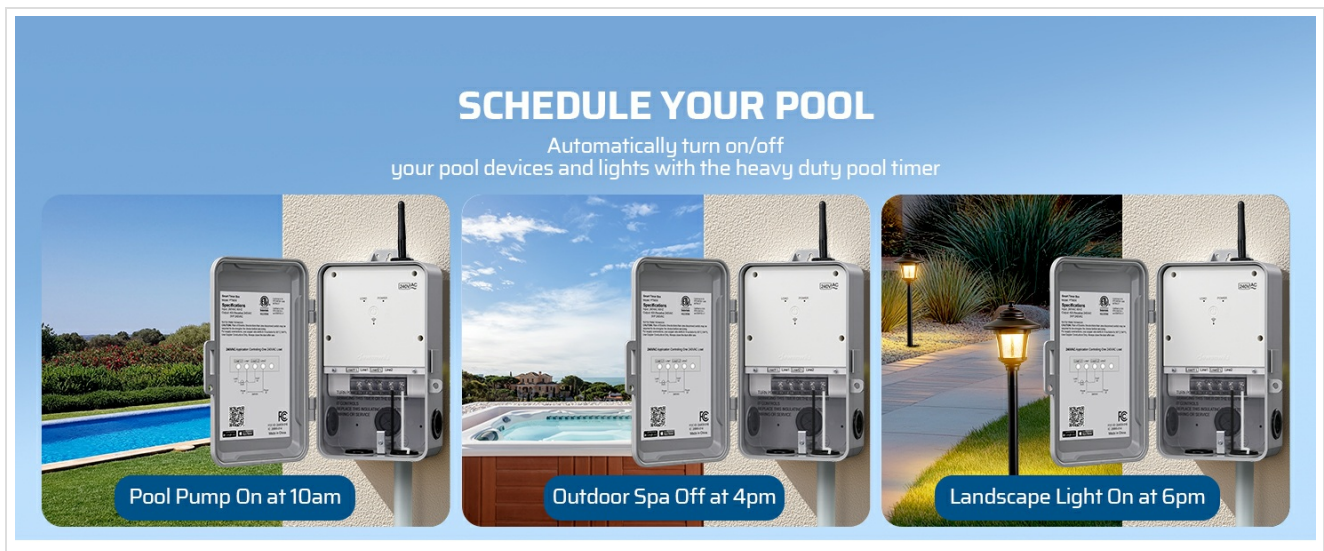


Image: This image illustrates various scheduling possibilities for pool equipment using the DEWENWILS Digital Pool Timer. Examples include turning the pool pump on at 10 AM, an outdoor spa off at 4 PM, and landscape lights on at 6 PM, showcasing the timer's automation capabilities.

3. Voice Control

Integrate your DEWENWILS timer with Amazon Alexa or Google Assistant for hands-free control. Once linked, you can use simple voice commands to turn your connected appliances on or off.

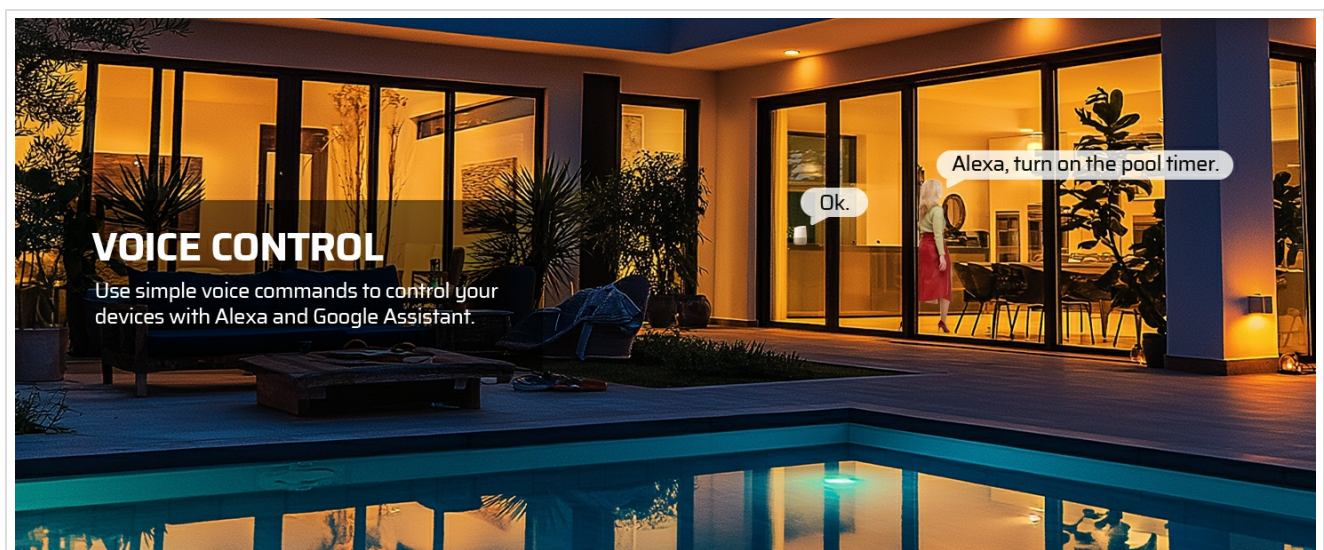


Image: A woman is shown in a modern outdoor setting, using voice commands to control her pool timer with an Alexa device. The text emphasizes the ease of using simple voice commands with Alexa and Google Assistant to manage connected devices.

MAINTENANCE

The DEWENWILS PTW04 timer is designed for minimal maintenance due to its durable and weatherproof construction.

- **Regular Inspection:** Periodically check the timer box for any signs of damage, wear, or loose connections.
- **Cleaning:** Wipe the exterior with a damp cloth as needed. Do not use harsh chemicals.
- **Weather Protection:** The IP44 rating ensures protection against splashing water and solid objects larger than 1mm. The flame-retardant PC housing is built to withstand temperatures from -40°F to 140°F.



Image: The DEWENWILS Pool Pump Timer is depicted in a split image, showing its resilience in both cold (-40°F) and hot (140°F)

weather conditions. Icons highlight its IP44 waterproof rating, ETL listing, sturdy plastic box construction, and wide temperature operating range, emphasizing its weatherproof and heavy-duty design.

TROUBLESHOOTING

- **Device not connecting to Wi-Fi:** Ensure your router is 2.4GHz. Reset the device and attempt pairing again. Check Wi-Fi signal strength at the timer's location.
- **App control issues:** Verify your smartphone has an active internet connection. Ensure the app is updated to the latest version.
- **Timer not responding:** Check the power indicator light on the device. Ensure the main power switch is ON. Try manual control to verify device functionality.
- **Scheduling errors:** Double-check your schedule settings in the app for correct times and days.

SPECIFICATIONS

Feature	Specification
Model Number	PTW04
Product Dimensions	4 x 6 x 7 inches (4"D x 6"W x 7"H)
Item Weight	1.83 pounds
Material	Polycarbonate
Input Voltage	240VAC
Current Rating	40A
Horsepower (HP)	3HP
Wi-Fi Compatibility	2.4GHz only
Weatherproof Rating	IP44
Operating Temperature	-40°F to 140°F
Certifications	ETL Listed

WARRANTY AND SUPPORT

The DEWENWILS PTW04 Pool Pump Timer is ETL certified, ensuring it meets rigorous safety and performance standards. For warranty claims, technical support, or any product-related inquiries, please refer to the contact information provided in your product packaging or visit the official DEWENWILS website.

For app-related support, you can also visit the Smart Life app's help section or their official support channels. The app can be downloaded from <https://a.smart321.com/dewenwilssmartiot>.