

Manuals+

[Q & A](#) | [Deep Search](#) | [Upload](#)

manuals.plus /

- › [RYND](#) /
- › [RYND 3-in-1 Wireless Charger Instruction Manual](#)

RYND W336

RYND 3-in-1 Wireless Charging Station User Manual

Model: W336

For Apple iPhone, Apple Watch, AirPods, and compatible Android/Samsung devices

INTRODUCTION

Thank you for choosing the RYND 3-in-1 Wireless Charging Station. This device is designed to provide a convenient and efficient charging solution for your compatible Apple and Android devices, including smartphones, smartwatches, and wireless earbuds. Please read this manual carefully before use to ensure proper operation and to maximize the lifespan of your product.



Image: The RYND 3-in-1 Wireless Charging Station in Rosy Red, showcasing its ability to charge an iPhone, Apple Watch, and AirPods simultaneously. An external power adapter is also visible.

WHAT'S IN THE BOX

Please check the package contents upon opening:

- 1 x RYND 3-in-1 Wireless Charger
- 1 x USB Cable
- 1 x 18W QC 3.0 Fast Power Adapter
- 1 x User Manual (this document)

COMPATIBILITY

This wireless charging station is designed for wide compatibility with various devices:

- **iPhones:** iPhone 16, 15, 14, 13, 12, 11, 12 Mini, Pro, Pro Max, XS, XR, XS MAX, X, 8, Plus series.
- **Apple Watch:** Apple Watch Series 10, 9, 8, 7, 6, 5, 4, 3, 2, SE, Ultra, Ultra 2.
- **AirPods:** AirPods 2, 3, 4, Pro, Pro 2. *Note: Only compatible with AirPods cases that support wireless charging.*
- **Android/Samsung Series:** Galaxy Buds series, Galaxy Watch4 Smartwatch, Samsung mobile phones (Galaxy S series:

S24, S23, S22, S21 series). *Note: Only supports devices with wireless charging capability.*

3-in-1 for a Cleaner Workspace



iPhone 16 15 14 13 12 Series

Magnetic Cases



Apple Watch Series 1-10 / Ultra 2 / SE



AirPods 4 / 3 / 2 / Pro



Image: A visual representation of the charger's compatibility with iPhone 16/15/14/13/12 series, Apple Watch Series 1-10/Ultra/2/SE, and AirPods 4/3/2/Pro. It also indicates that magnetic cases are not compatible.



Image: A comprehensive compatibility chart showing supported iPhone models (11 through 16 series), Galaxy Buds, Galaxy Watch4, Apple Watch Series 1-10, and various AirPods models, including those with wireless charging cases.

SETUP INSTRUCTIONS

- 1. Unpack:** Carefully remove all components from the packaging.
- 2. Connect Power Adapter:** Insert the provided USB cable into the charging port on the back of the wireless charging station.
- 3. Plug In:** Connect the other end of the USB cable to the included 18W QC 3.0 fast power adapter, then plug the adapter into a wall outlet.
- 4. Power On:** The charging station will power on automatically. The indicator light will briefly illuminate.

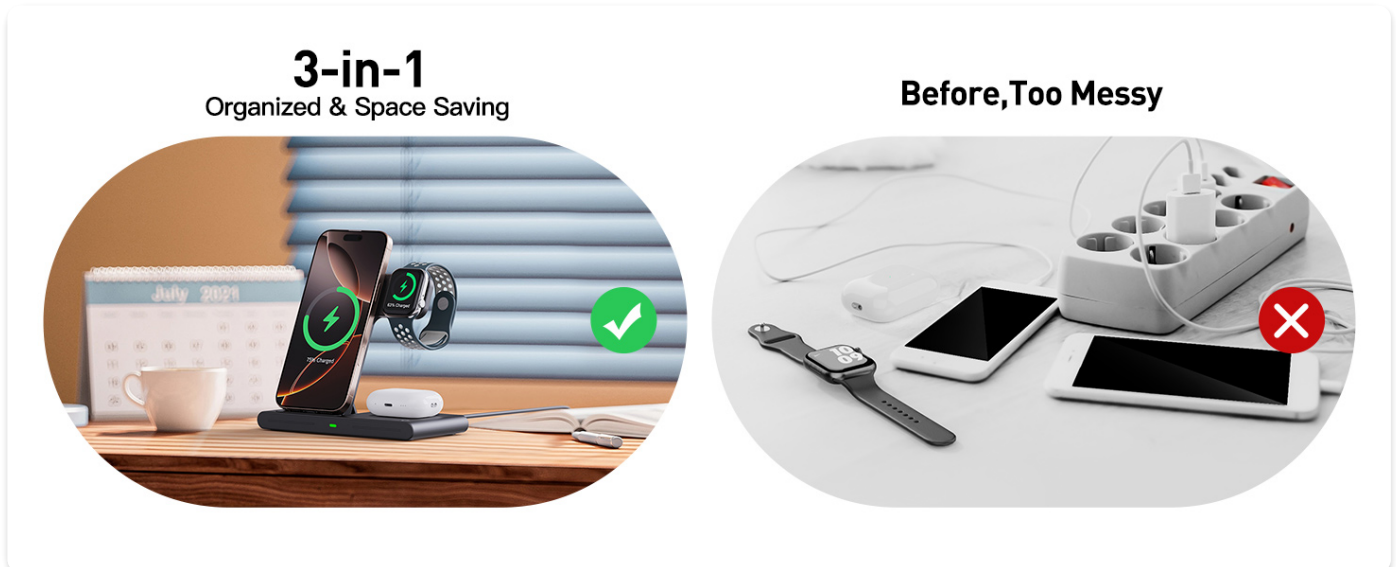


Image: A visual comparison demonstrating how the RYND 3-in-1 charger helps organize a workspace, contrasting a cluttered setup with multiple cables and chargers against a clean setup with the compact charging station.

OPERATING INSTRUCTIONS

Charging Your Devices

- 1. Smartphone Charging:** Place your compatible smartphone vertically on the designated phone charging stand. Ensure the phone is centered on the charging area for optimal connection.

2. **Apple Watch Charging:** Place your Apple Watch on the magnetic charging module. The watch will automatically align and begin charging.
3. **Earbuds Charging:** Place your wireless charging case (e.g., AirPods) on the flat charging pad at the base of the station. Ensure the case is centered.

Indicator Light Functionality

- When a device is placed on the wireless charger, the indicator light will turn **green**.
- After approximately 3 seconds, the light will turn **blue**, indicating active charging.
- To control the ambient light at night, **touch the switch** on the charging station. This allows for an undisturbed sleep environment.
- If the indicator light **flashes**, it indicates abnormal charging. Please refer to the Troubleshooting section.

3-in-1 Wireless Charger



With Dedicated Spots for Your iPhone, Watch and AirPods, you can Keep Everything Charged and Ready in one Compact Station.

Image: A detailed view of the RYND 3-in-1 Wireless Charger, highlighting the distinct charging areas for iPhone, Apple Watch, and AirPods, emphasizing its compact and organized design.



Image: A person sleeping peacefully next to the RYND 3-in-1 charger, illustrating its sleep-friendly design with a light switch for manual control of the indicator light, ensuring undisturbed rest.

KEY FEATURES

- **3-in-1 Charging:** Simultaneously charges your iPhone, Apple Watch, and AirPods, providing a full charge in approximately 2.5-3 hours.
- **Portable Folding Design:** The charger features a foldable and lightweight design, making it ideal for travel, home, and office use. It can be smoothly folded 180° for easy portability.
- **Case Friendly:** Supports charging with phone cases up to 4mm (0.16 inches) thick. Ensure no metal rings, plates, metal cases, credit cards, or magnetic pads are between the phone and the charger.
- **Advanced Protection:** F-CC certified with multiple safety features including overcharge protection, overvoltage protection, overheat protection, and foreign object detection. The back of the charging station includes cooling holes for efficient heat dissipation.
- **Smart Chip 3.0:** Equipped with an efficient cooling chip for fast and stable charging, allowing a full phone charge in approximately 3.5 hours.
- **Non-slip Surface:** Ensures your devices remain securely in place during charging.
- **Durable Material:** Made of ABS fireproof material, maintaining temperatures below 104°F during charging.

Case Friendly

Charging with Case $\leq 4\text{mm}$ (0.16in.)



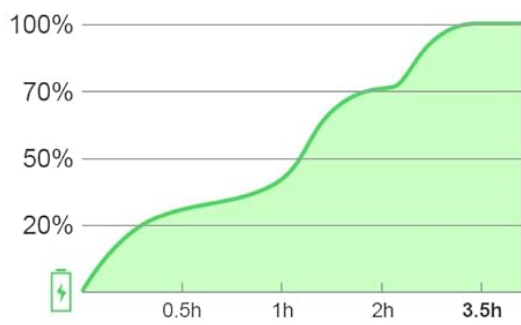
Image: A visual explanation of the charger's case-friendly design, indicating that it supports charging with cases up to 4mm thick, while advising against metal rings, plates, metal cases, credit cards, or magnetic pads.

3.5h Faster Than Others



3.5H

RYND

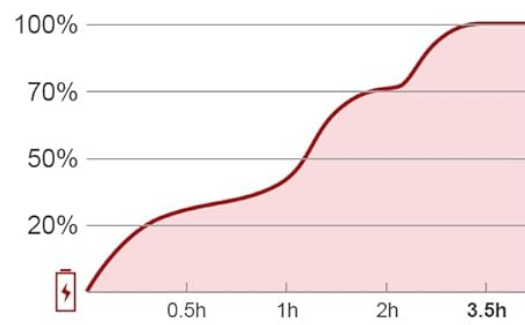


Stable & Fast Charging



4.7H

Others



Slow & Intermittent

Image: A graph comparing the charging speed of the RYND charger (3.5 hours for full charge) against other generic chargers (4.7 hours), highlighting RYND's stable and fast charging performance.

Cutting-Edge Coil Charging Module

Designed with Precision and Innovation, This Advanced Coil Module Ensures Seamless Energy Transfer and Rapid Charging for all Your Devices.



Overcharge protection



Overcurrent protection



Overvoltage protection



Over-temperature protection



Foreign Object Detection



Image: An illustration of the charger's internal cutting-edge coil charging module, accompanied by icons representing its multiple protection features: overcharge, overcurrent, overvoltage, over-temperature, and foreign object detection.

MAINTENANCE

- **Cleaning:** Disconnect the charger from the power source before cleaning. Use a soft, dry cloth to wipe the surface. Do not use abrasive cleaners or immerse the device in water.
- **Storage:** When not in use, store the charger in a cool, dry place away from direct sunlight and extreme temperatures. Its foldable design makes it easy to store.
- **Handling:** Avoid dropping or subjecting the charger to strong impacts, as this may damage internal components.

TROUBLESHOOTING

Problem	Possible Cause	Solution
Device not charging / Indicator light flashing	Foreign object detected (e.g., metal, credit card) Device not properly aligned Case too thick Using an incompatible power adapter	Remove any foreign objects. Re-position the device to ensure it is centered on the charging area. Remove the phone case or use a thinner one (max 4mm). Ensure you are using the provided 18W QC 3.0 fast power adapter.
Slow charging	Using a low-power adapter Device not properly aligned Background apps consuming power	Use the provided 18W QC 3.0 fast power adapter. Ensure the device is correctly placed on the charging coil. Close unnecessary background applications on your device.
Charger gets warm	Normal operation Poor ventilation	A slight warmth during charging is normal. The device has cooling holes to dissipate heat. Ensure the charger is placed on a flat surface with adequate ventilation.
Indicator light does not turn on	No power connection Device not detected	Check if the power adapter is securely plugged into the wall outlet and the charger. Ensure the device is compatible and correctly placed on the charging area.

SPECIFICATIONS

Feature	Detail
Model Number	W336
Package Dimensions	7.6 x 6.06 x 1.3 inches
Item Weight	10.2 ounces
Connectivity Technologies	Wireless, USB
Special Features	Fast charging, Magnetic (for Apple Watch)
Color	Rosy Red
Manufacturer	JiangXi Kingtron Technology Co.,Ltd.
First Available Date	November 25, 2024

WARRANTY AND SUPPORT

RYND offers a **3-year warranty** for this product from the date of purchase. This warranty covers manufacturing defects and issues arising from normal use. It does not cover damage caused by misuse, accidents, unauthorized modifications, or external factors. For warranty claims, technical support, or any inquiries regarding your RYND 3-in-1 Wireless Charging Station, please contact RYND customer service through the retailer where you purchased the product or visit the official RYND store on Amazon:

[Visit the RYND Store on Amazon](#)

Please have your purchase receipt and product model number (W336) ready when contacting support.