

GZTAUTO MGTNTS002230-TL

GZTAUTO 8.0-inch Touch Screen Digitizer Instruction Manual

For Lexus and Toyota Radio Systems

1. PRODUCT OVERVIEW

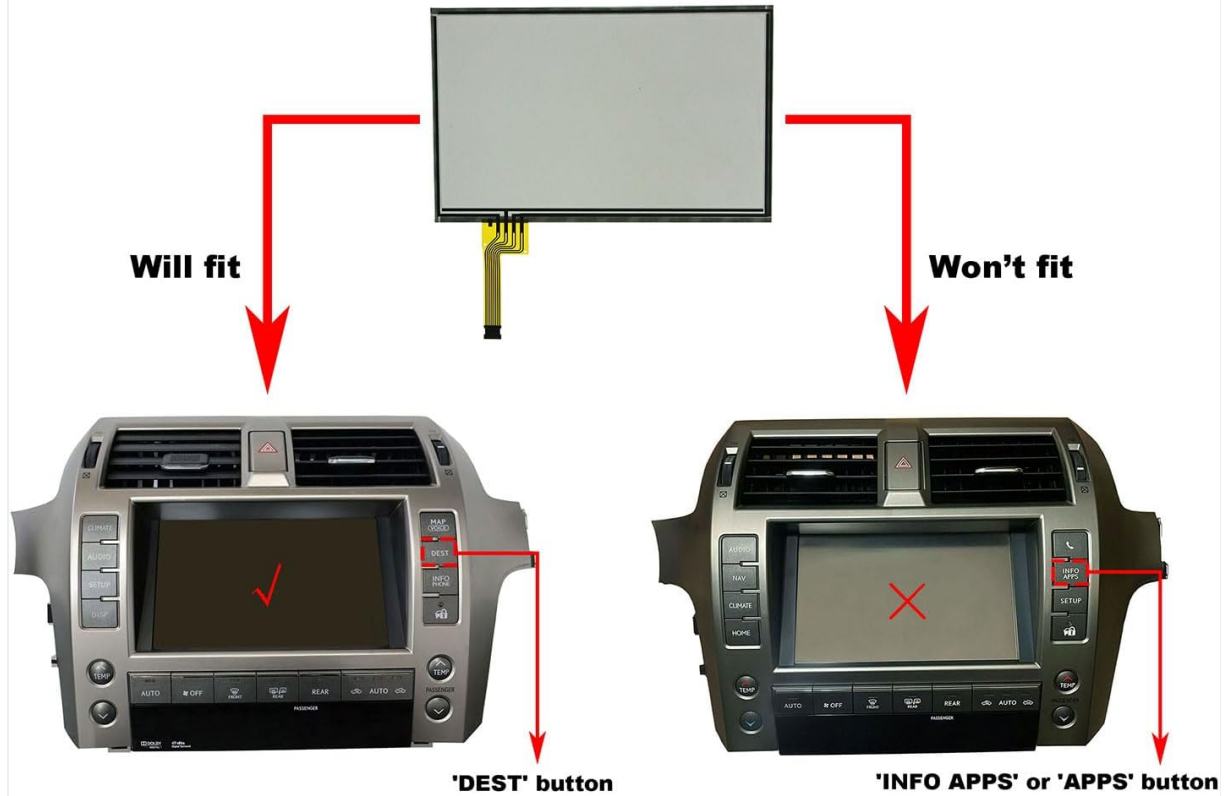
This document provides instructions for the GZTAUTO 8.0-inch touch screen digitizer, designed as a replacement component for specific Lexus and Toyota vehicle radio, stereo, navigation, and audio systems. This product is intended to restore touch functionality to displays that are unresponsive, frozen, scratched, cracked, or have other touch-related issues. It is important to note that this product is a touch screen digitizer panel only and does not include the LCD display or the entire head unit.

2. VEHICLE COMPATIBILITY

The GZTAUTO 8.0-inch touch screen digitizer is compatible with the following vehicle models and years, provided they are equipped with an 8.0-inch radio display. Please verify your vehicle's radio display size (7.0-inch or 8.0-inch) before proceeding with installation.

- **Lexus GX460:** 2010, 2011, 2012, 2013 (8.0-inch radio)
- **Lexus GX400:** 2010, 2011, 2012, 2013 (8.0-inch radio)
- **Lexus LX570:** 2007, 2008, 2009, 2010, 2011, 2012, 2013 (8.0-inch radio)
- **Lexus LS460 and LS460L:** 2007, 2008, 2009, 2010, 2011, 2012 (8.0-inch radio)
- **Lexus LS600H and LS600HL:** 2007, 2008, 2009 (8.0-inch radio)
- **Toyota Land Cruiser (including 200 series):** 2004, 2005, 2006, 2007, 2008, 2009, 2010 (8.0-inch radio)

Touch Stopped Working? Replace The Touchscreen!



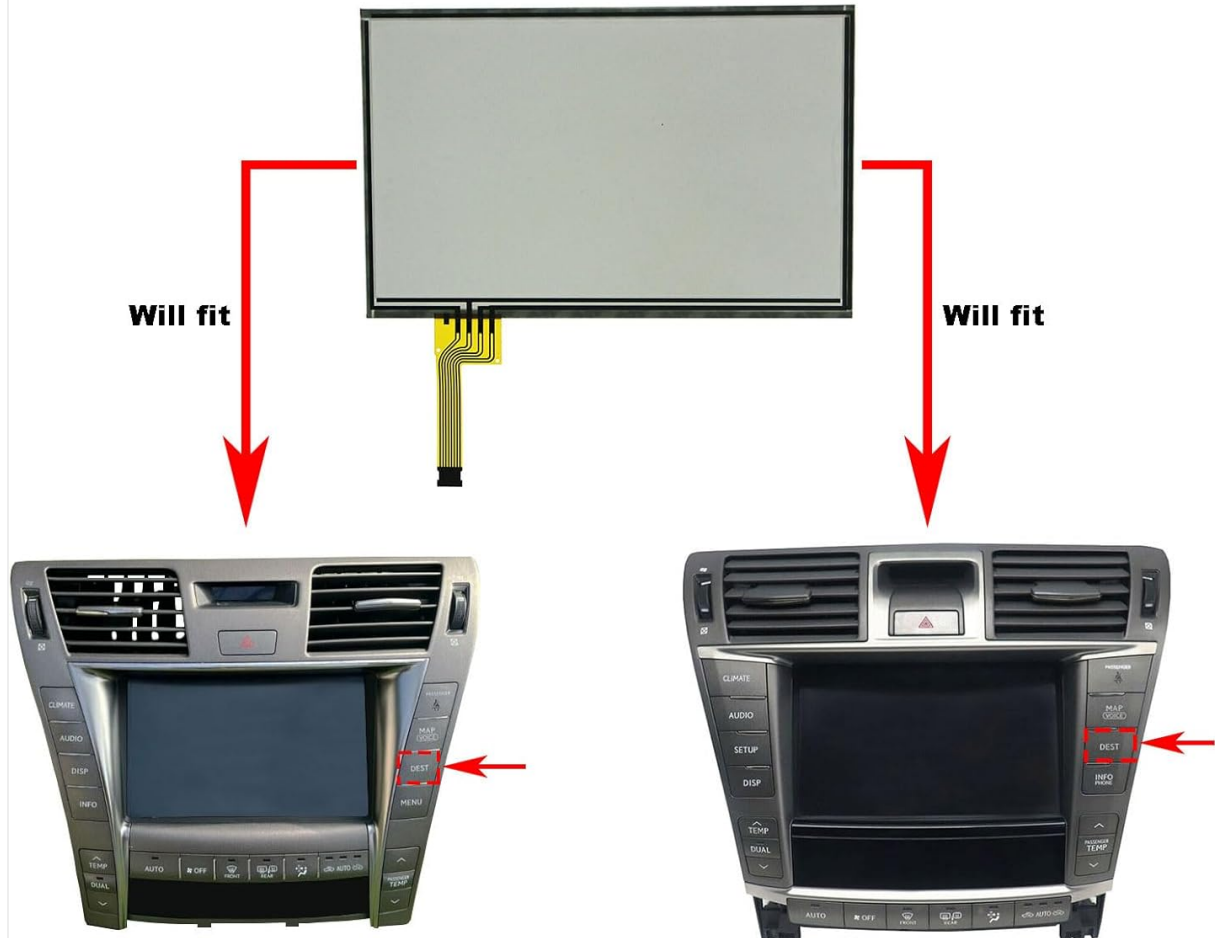
The touch screen will only fit for 2010-2013 Lexus GX460 and GX400 8.0-inches radios like the above.

IMPORTANT: Please check the size of your radio display is 7.0" or 8.0" before buying. It only fits a 8.0" radio display.

(Radios above for display only. They aren't included in sale.)

Image: Compatibility for Lexus GX460 and GX400 8.0-inch radio systems (2010-2013).

Touch Stopped Working? Replace The Touchscreen!



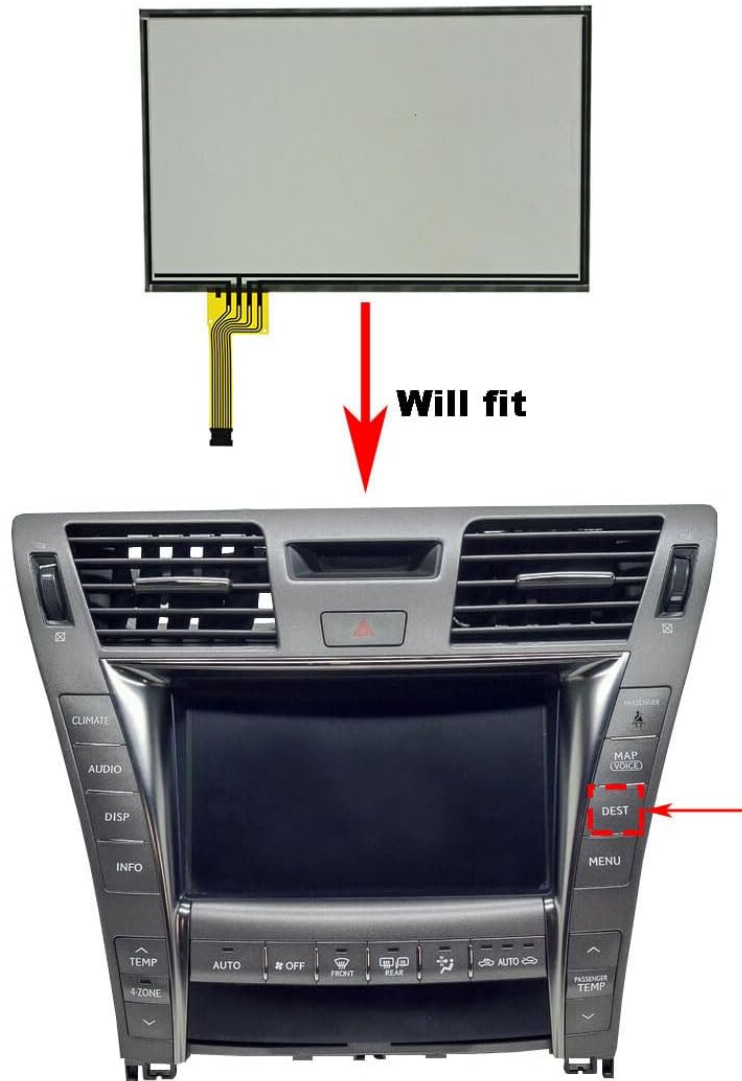
The touch screen will only fit for 2007-2012 Lexus LS460 and LS460L 8.0-inches radios like the above.

IMPORTANT: Please check the size of your radio display is 7.0" or 8.0" before buying. It only fits a 8.0" radio display.

(Radios above for display only. They aren't included in sale.)

Image: Compatibility for Lexus LS460 and LS460L 8.0-inch radio systems (2007-2012).

Touch Stopped Working? Replace The Touchscreen!



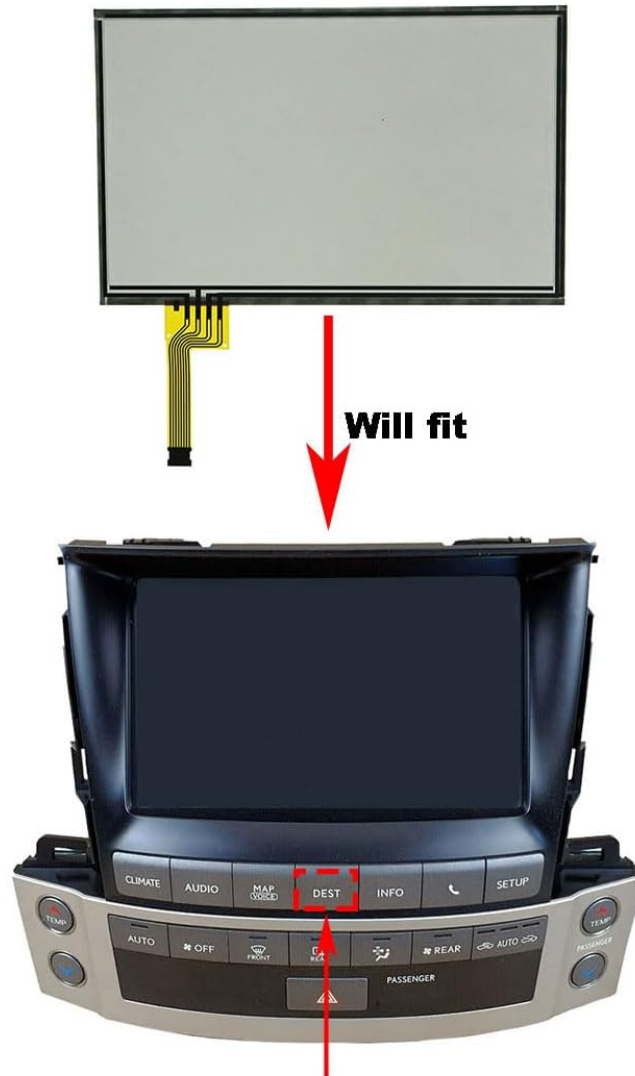
The touch screen will only fit for 2007-2009 Lexus LS600H and LS600HL 8.0-inches radios like the above.

IMPORTANT: Please check the size of your radio display is 7.0" or 8.0" before buying. It only fits a 8.0" radio display.

(Radio above for display only. It isn't included in sale.)

Image: Compatibility for Lexus LS600H and LS600HL 8.0-inch radio systems (2007-2009).

Touch Stopped Working? Replace The Touchscreen!



**The touch screen will only fit for 2007-2013 Lexus LX570
8.0-inches radios like the above.**

**IMPORTANT: Please check the size of your radio display is 7.0" or 8.0"
before buying. It only fits a 8.0" radio display.**

(Radio above for display only. It isn't included in sale.)

Image: Compatibility for Lexus LX570 8.0-inch radio systems (2007-2013).

Touch Stopped Working? Replace The Touchscreen!



The touch screen will only fit for 2004-2010 Toyota Land Cruiser (including 200 Series) 8.0-inches radios like the above.

(Radios above for display only. They aren't included in sale.)

Image: Compatibility for Toyota Land Cruiser (200 series) 8.0-inch radio systems (2004-2010).

3. PRODUCT SPECIFICATIONS

The GZTAUTO touch screen digitizer features the following technical specifications:

- **Diagonal Size:** 8.0 inches
- **Outline Dimension:** 191 x 121 mm (Height x Width)
- **Interface:** 4-Wire, 8-Pin
- **Working Voltage:** 5V
- **Touch Type:** Resistance touch screen
- **Main Material:** Glass
- **Technology:** TFT (LCD) compatible



Image: Front view of the GZTAUTO 8.0-inch Touch Screen Digitizer.

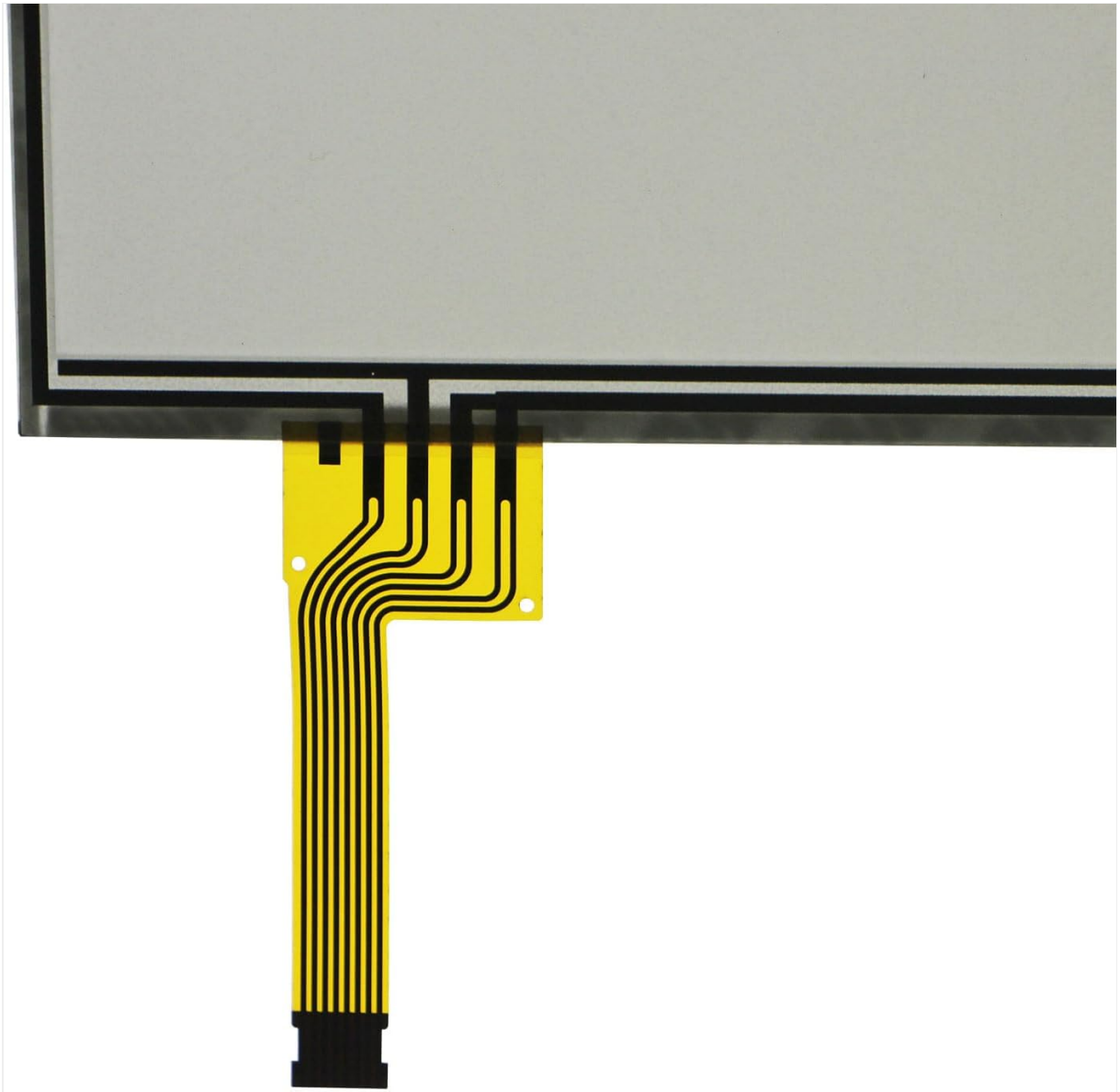


Image: Close-up view of the digitizer's ribbon cable.

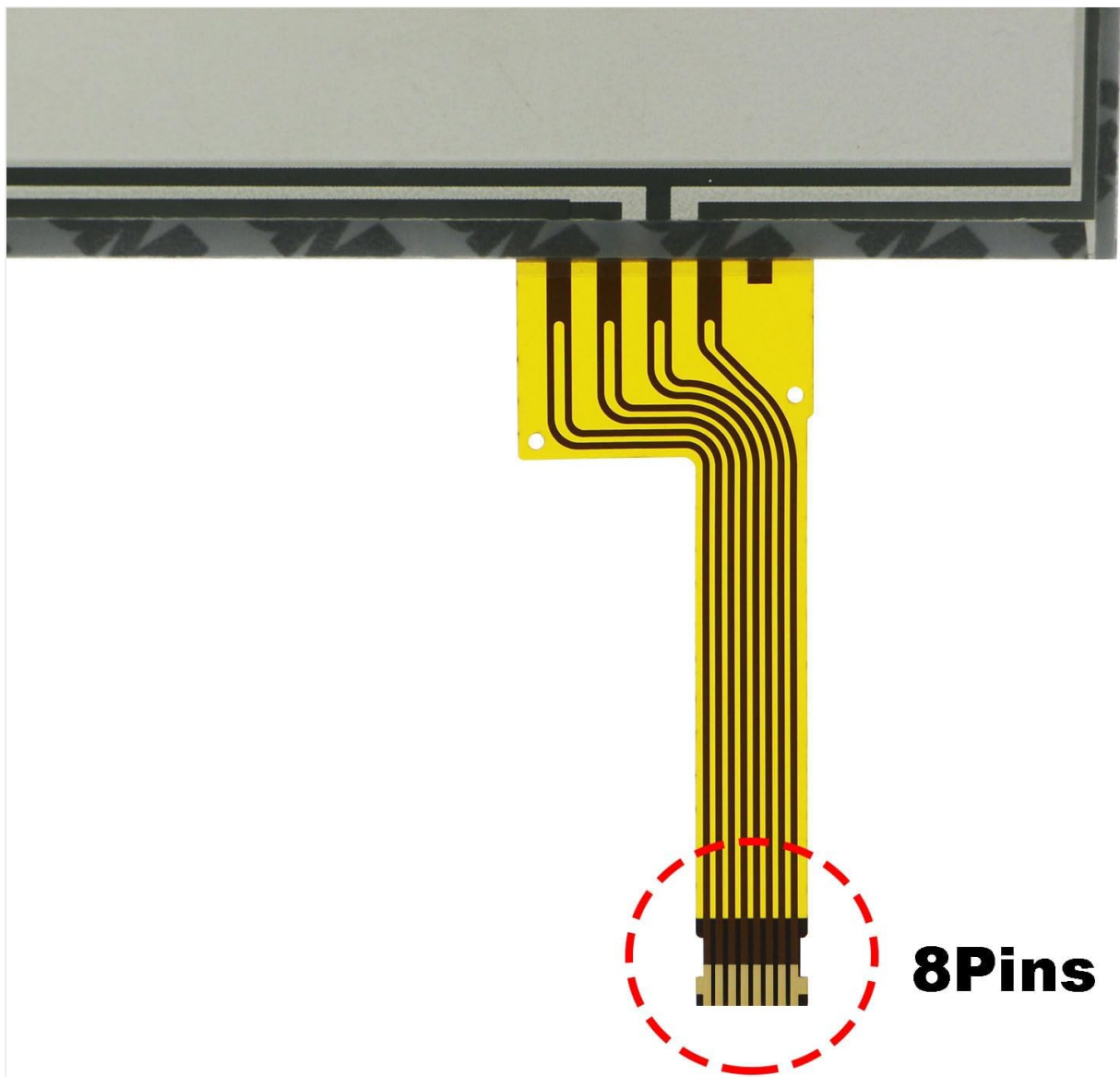


Image: Detailed view of the 8-pin connector on the ribbon cable.

Additional Specifications:

Manufacturer	GZTAUTO
Model Number	MGTNTS002230-TL
Manufacturer Part Number	LTA080B922F-TL
Item Weight	9.3 ounces
Package Dimensions	9.3 x 6.7 x 0.5 inches

4. INSTALLATION GUIDELINES

Installation of this touch screen digitizer requires technical knowledge and specialized tools. Professional installation is highly recommended to prevent damage to the product or your vehicle's electronic system. Installation instructions and tools are not included with this package.

Important Pre-Installation Steps:

1. **Remove Protective Films:** Before installing the digitizer, carefully remove the protective films present on both surfaces of the panel.

2. **Clean Ribbon Cable Interface:** Ensure the ribbon cable interface on the digitizer and the corresponding connector on your radio unit are clean and free of debris. This promotes good contact and proper functionality.

General Installation Advice:

- Disconnect the vehicle's battery before beginning any electrical work.
- Carefully disassemble the vehicle's dashboard and radio unit to access the display.
- Gently detach the old digitizer from the LCD display.
- Connect the new digitizer's ribbon cable to the radio unit's interface, ensuring a secure and correct connection.
- Mount the new digitizer onto the LCD display.
- Before fully reassembling, temporarily reconnect the battery and test the touch screen functionality.
- If the touch screen functions correctly, proceed with reassembling the radio unit and dashboard components.

5. OPERATING THE TOUCH SCREEN

Once installed, the GZTAUTO touch screen digitizer restores the original touch functionality of your vehicle's radio display. Operation will be identical to the factory-installed touch screen. Interact with the display by gently touching the screen with your finger to select options, navigate menus, and control functions as per your vehicle's infotainment system design.

6. CARE AND MAINTENANCE

To ensure the longevity and optimal performance of your touch screen digitizer, follow these care guidelines:

- **Cleaning:** Use a soft, lint-free cloth slightly dampened with a screen cleaner solution or water to gently wipe the screen. Avoid harsh chemicals, abrasive materials, or excessive moisture.
- **Protection:** Avoid applying excessive pressure to the screen. Do not use sharp objects or tools directly on the screen surface.
- **Temperature:** Protect the screen from extreme temperatures, both hot and cold, as these can affect its performance and lifespan.

7. TROUBLESHOOTING COMMON ISSUES

This digitizer is designed to address issues related to the touch functionality of your vehicle's display. If you experience any of the following problems after installation, consider these points:

- **No Touch Response or Intermittent Response:**
 - Verify that the ribbon cable is securely and correctly connected to both the digitizer and the radio unit's interface.
 - Ensure the ribbon cable interface was clean during installation.
 - Confirm that the protective films were removed from the digitizer.
- **Display Issues (e.g., no image, distorted image):**
 - This product is a digitizer only. Display issues are typically related to the LCD panel itself, not the touch screen digitizer. If your LCD is damaged, replacing the digitizer will not resolve display problems.
- **Physical Damage (e.g., new cracks, scratches):**
 - Physical damage indicates improper handling or installation. Exercise caution during installation and use.

If troubleshooting steps do not resolve the issue, it is recommended to consult with a professional automotive electronics technician.

8. PACKAGE CONTENTS

The package includes the following item:

- 1x 8.0-inch Touch Screen Digitizer

Please note that installation tools and additional components (such as the LCD display or head unit) are not included.