

[Manuals.plus](#) /

› [AOFAR](#) /

› AOFAR GX6 Laser Golf Rangefinder Instruction Manual

AOFAR GX6

AOFAR GX6 Laser Golf Rangefinder Instruction Manual

MODEL: GX6

Introduction

This manual provides comprehensive instructions for the AOFAR GX6 Laser Golf Rangefinder. Please read this manual carefully before using the device to ensure proper operation and to maximize its performance. Keep this manual for future reference.

Package Contents

Verify that all items listed below are included in your package:

- AOFAR GX6 Laser Golf Rangefinder
- Type-C Charging Cable
- High-Quality Portable Rope
- Carabiner
- Carry Bag
- Cleaning Cloth
- User Manual (this document)

What's in box



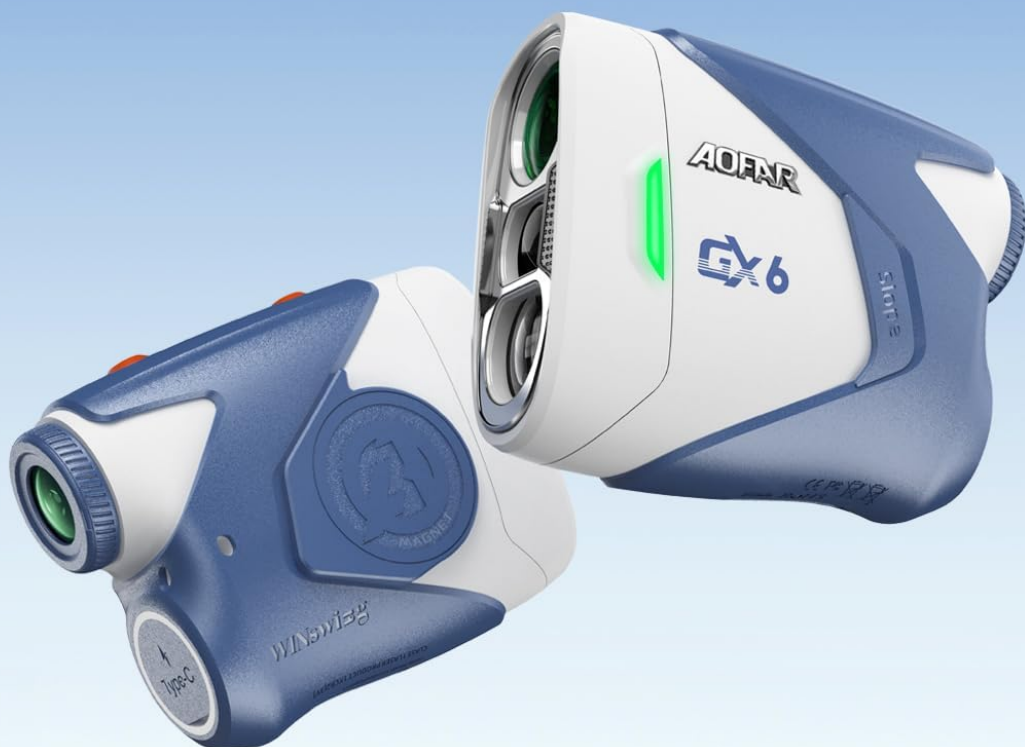
Image: All items included in the AOFAR GX6 Laser Golf Rangefinder package.

Product Features

- **High Accuracy & Range:** Measures distances up to 1000 yards (914 meters) with an accuracy of ± 0.5 meters.
- **Fast Measurement:** Provides measurements in approximately 0.02 seconds.
- **7X Magnification:** Equipped with advanced ED glass for clear visuals and 7x magnification.
- **USB-C Rechargeable Battery:** Features a Type-C charging port and a powerful lithium battery, offering up to 12,000 measurements on a single charge.
- **Magnetic Design:** Integrated N52 maximum quality magnet allows secure attachment to golf carts, bags, or belts.

- **Flag Lock with Vibration:** Long-press the Power button to activate flag targeting. The device vibrates upon successful flag lock.
- **Slope Compensation:** Dedicated slope switch for easy on-the-fly adjustment. Automatically calculates slope-compensated distances using AI.
- **Tournament Legal Indicator:** A green LED indicator illuminates when slope mode is off, confirming that the slope function is disabled and the device is tournament legal.
- **Durable & Portable:** Constructed from ABS and silicone for excellent toughness and shock resistance. Compact dimensions (9.6 x 7.8 x 4.2 cm) and lightweight (164 grams).
- **IPX4 Waterproof:** Designed to perform reliably in rain or sweat.

Up to 1000 yards ±0.5 yard accuracy
7X magnification



Hyper Charging



PRO Magnet



Ultra-fast flag locking



Lightweight Body



Adaptive Slope Tech

Image: The AOFAR GX6 rangefinder highlighting its core capabilities.

Lightweight Body and Sleek

Exceptionally portable
and user - friendly

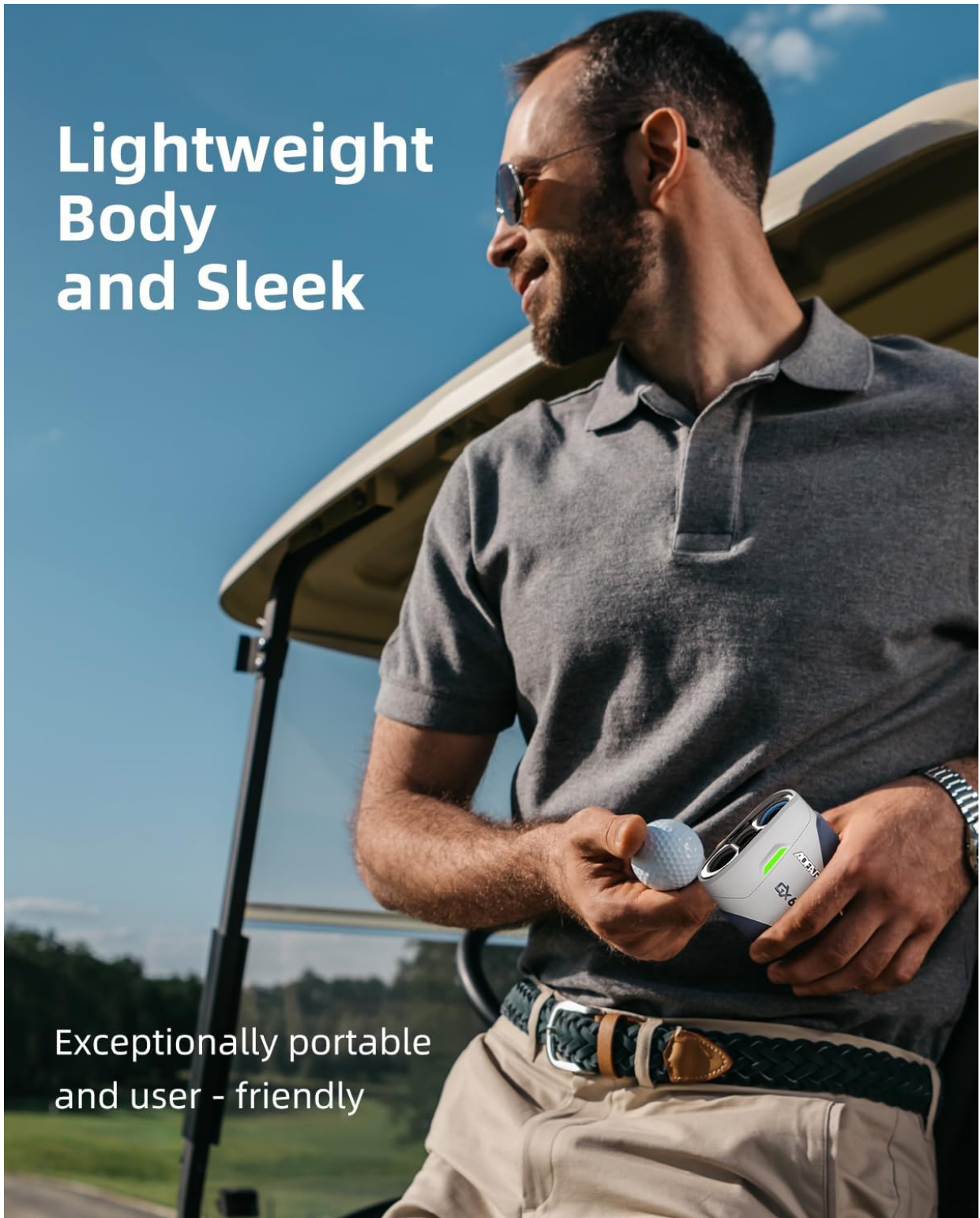


Image: The AOFAR GX6 rangefinder, emphasizing its lightweight and ergonomic design.

Setup

1. **Initial Charge:** Before first use, fully charge the rangefinder using the provided Type-C charging cable. Connect the cable to the Type-C port on the device and a compatible USB power source. The charging indicator will show charging status.
2. **Power On/Off:** Press the Power button briefly to turn on the device. The display will activate. To turn off, press and hold the Power button, or the device will automatically power off after a period of inactivity to conserve battery.
3. **Eyepiece Adjustment:** Rotate the eyepiece to adjust the focus until the display and target appear clear.

Support Over **12000** Times
When Fully Charged



Image: The AOFAR GX6 rangefinder being charged via its USB-C port.

Operating Instructions

Measurement Modes

The AOFAR GX6 offers various measurement modes to assist your game.

1. **Standard Measurement:** Briefly press the Power button to activate the laser. Aim at your target and press the Power button again to get a distance reading.
2. **Flag Lock with Vibration:** For targeting flags, long-press the Power button. Scan across the flag. The device will vibrate and display the distance to the flag once locked.
3. **Slope Compensation:** The device features a dedicated slope switch.

- To activate slope compensation (for practice rounds), slide the slope switch to the "ON" position. The device will display both the actual distance and the slope-adjusted distance.
- To deactivate slope compensation (for tournament play), slide the slope switch to the "OFF" position. A green LED indicator will light up, confirming that the slope function is disabled and the device is tournament legal.



Image: The rangefinder's view through the eyepiece, demonstrating 7X magnification and quick flag lock.

Adaptive Slope Tech

Freely switch the slope to adapt to any terrain

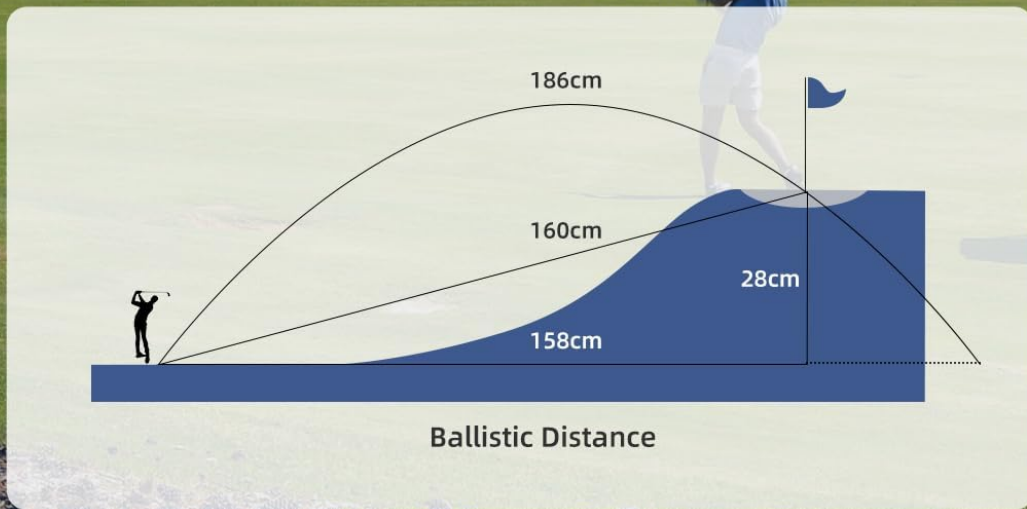
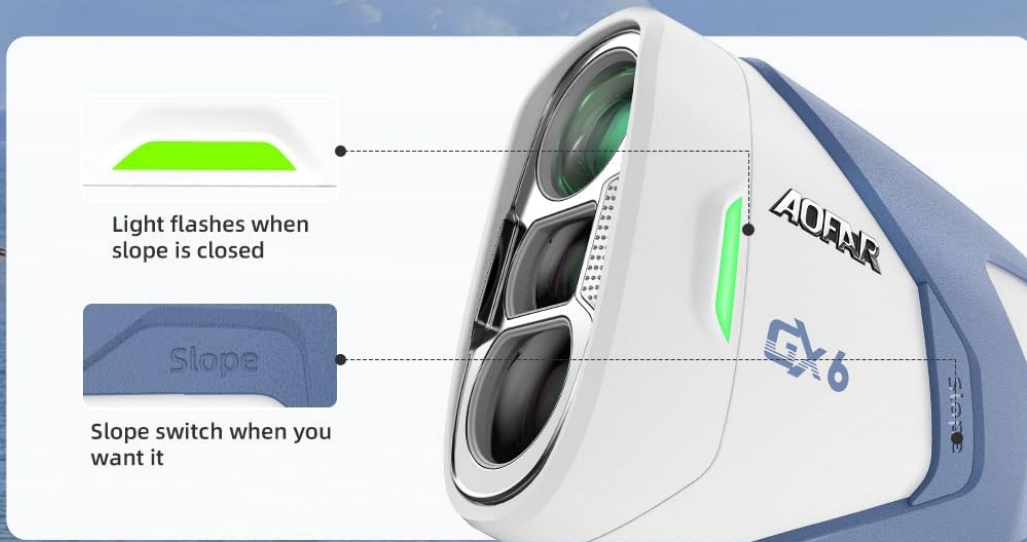


Image: Visual representation of the slope compensation feature and the physical slope switch on the device.



Image: A golfer using the AOFAR GX6 rangefinder to measure distance on the course.

Maintenance

- **Cleaning:** Use the provided cleaning cloth to gently wipe the lenses and the body of the rangefinder. Do not use abrasive materials or chemical cleaners.
- **Storage:** Store the device in its carry bag when not in use to protect it from dust, dirt, and physical damage. Keep it in a cool, dry place away from direct sunlight and extreme temperatures.
- **Battery Care:** Recharge the battery regularly, even if not used frequently, to maintain battery health. Avoid fully discharging the battery for extended periods.
- **Water Resistance:** The device is IPX4 waterproof, meaning it is resistant to splashing water. Do not submerge the device in water.

IPX4 Waterproof & Magnetic

IPX4 waterproof rating combats every rainfall
N52 magnets allow you to carry them conveniently



Image: The AOFAR GX6 rangefinder demonstrating its magnetic attachment and waterproof design.

Troubleshooting

Problem	Possible Cause	Solution
Device does not power on.	Low battery.	Charge the device using the Type-C cable.

Problem	Possible Cause	Solution
Inaccurate distance readings.	Lens is dirty; target is too small or reflective; environmental interference (fog, heavy rain).	Clean the lenses with the provided cloth. Ensure target is clear. Avoid use in extreme weather conditions.
Display is blurry.	Eyepiece not properly focused.	Rotate the eyepiece to adjust focus until the display is clear.
Flag lock not working.	Not long-pressing the power button; flag is obscured.	Ensure you long-press the power button to activate flag lock mode. Scan slowly across the flag.

Specifications

Feature	Detail
Model Number	GX6
Measurement Range	Up to 1000 yards (914 meters)
Measurement Accuracy	±0.5 meters
Magnification	7X
Measurement Speed	0.02 seconds
Battery Type	Rechargeable Lithium-ion Polymer
Battery Life	Up to 12,000 measurements per charge
Waterproof Rating	IPX4
Dimensions (L x W x H)	9.6 x 7.8 x 4.2 cm
Weight	164 grams
Material	ABS, Silicone

Warranty and Support

The AOFAR GX6 Laser Golf Rangefinder comes with a **2-year manufacturer's warranty**.

For technical assistance, warranty claims, or any product-related inquiries, please contact AOFAR customer support:

Email: service@aofar.com

Please retain your proof of purchase for warranty validation.