

SANWA GMAWBT204BK

SANWA GMAWBT204BK Bluetooth + 2.4G Wireless Handheld Mouse Instruction Manual

1. PRODUCT OVERVIEW

This manual provides detailed instructions for the SANWA GMAWBT204BK Bluetooth + 2.4G Wireless Handheld Mouse. This versatile device functions as a handheld mouse, a presentation clicker, and a remote media controller, offering flexible control across various devices and scenarios.



Image 1.1: The SANWA GMAWBT204BK Handheld Mouse, showcasing its ergonomic design and control buttons.

Key Features:

- **3-in-1 Functionality:** Operates as a mouse, presentation clicker, and media controller.
- **Dual Connectivity:** Supports Bluetooth 5.0 and 2.4GHz wireless connections.
- **Rechargeable Battery:** Built-in 500mAh battery provides extended usage.
- **Ergonomic Design:** Designed for comfortable handheld use, reducing wrist strain.
- **Wide Compatibility:** Compatible with Windows, macOS, Chrome OS, Android, iOS, and iPadOS.

2. SETUP AND CONNECTION

2.1 Charging the Device

Before initial use, ensure the mouse is fully charged.

1. Connect the included Type-C charging cable to the mouse's charging port.
2. Connect the USB-A end of the cable to a USB-A port on your computer or a compatible USB power adapter.
3. The notification LED will blink during charging. Charging is complete when the LED turns off

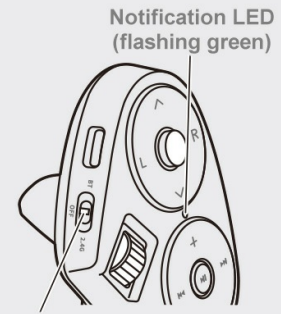
(approximately 3 hours).

4. When the battery is low, the notification LED will flash rapidly.

Connection with Mouse

For 2.4GHz wireless devices

1. Turn on the power of the connected device and boot the OS completely.
2. Remove the receiver storage cover on the back of the mouse and take out the receiver.
3. Connect the receiver to the USB A port of the connected device.
4. Switch the mouse's power/connection switch to 2.4G. The notification LED will flash green slowly.
5. The connection will be completed automatically.



Power/Connection switch button

● About the next connection

When the power/connection switch of the mouse is set to BT, the connection is made automatically.

Image 2.1: Illustration of connecting the Type-C charging cable to the mouse and a USB-A port for charging.

2.2 Connecting via Bluetooth 5.0

1. Turn on your connected device (e.g., laptop, tablet) and ensure its operating system is fully booted.
2. Navigate to the Bluetooth settings on your device to add a new Bluetooth device.
3. Slide the mouse's power/connection switch to the **BT** position. The notification LED will flash blue slowly.
4. Press and hold both the left and right buttons on the mouse simultaneously for 3 seconds. The mouse will enter pairing mode, and the notification LED will flash more rapidly.
5. On your device's pairing screen, select "SANWA MAWBT204" to complete the connection.

For subsequent connections, if the power/connection switch is set to BT, the mouse will automatically connect to the last paired device.

Operating System & Software

Applicable to Windows, Mac, ios, Chrome OS, Android, Linux
Support PowerPoint, Keynote, Google Slides, MS Series, Websites, etc.

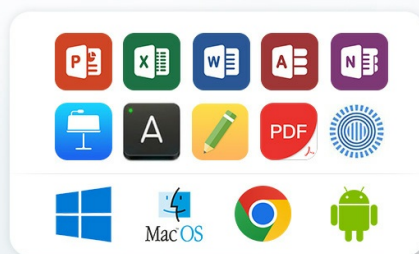


Image 2.2: Visual guide for connecting the mouse via Bluetooth, showing the switch position and LED indicator.

2.3 Connecting via 2.4GHz Wireless

1. Turn on your connected device and ensure its operating system is fully booted.
2. Remove the receiver storage cover on the back of the mouse and take out the USB receiver.
3. Connect the USB receiver to an available USB-A port on your device.

4. Slide the mouse's power/connection switch to the **2.4G** position. The notification LED will flash green slowly.
5. The connection will be established automatically.

For subsequent connections, if the power/connection switch is set to 2.4G, the mouse will automatically connect to the device with the receiver.

Traditional Mouse

Frequent hand moving causes wrist pain and stiffness



Handheld Ring Mouse

Effectively reduce wrist and shoulder strain



Image 2.3: Visual guide for connecting the mouse via 2.4GHz wireless, showing the USB receiver and switch position.

3. OPERATING INSTRUCTIONS

The SANWA GMAWBT204BK offers multiple modes of operation for various tasks.

Handheld Wireless Mouse

Control slides, switch pages, manage your presentation effortlessly



Image 3.1: The handheld mouse in use with a laptop, demonstrating its portability and ease of control.

3.1 Mouse Functionality

- **Cursor Control:** Use the cursor sensor (joystick-like control) to move the pointer on the screen.
- **Left Click:** Press the 'L' button for left-click actions.
- **Right Click:** Press the 'R' button for right-click actions.
- **Scrolling:** Use the scroll wheel located on the side for vertical scrolling.
- **Drag and Drop:** Long press the 'L' (Left) key for 3 seconds, then move the cursor using the sensor to drag and drop files or elements.

3.2 Presentation Clicker Functionality

This mouse supports presentation software such as PowerPoint, Keynote, and Google Slides.

- **Page Up / Next Slide:** Press the 'Up Arrow' button.
- **Page Down / Previous Slide:** Press the 'Down Arrow' button.
- **Full Screen / Black Screen:** The 'Up Arrow' button can also activate full screen, and the 'Down Arrow' button can activate a black screen during presentations. *Note: Full screen functionality may not be available on Google Slides.*

PowerPoint Clicker Function



Long press "Left" key for 3s and move the cursor to drag and drop the file

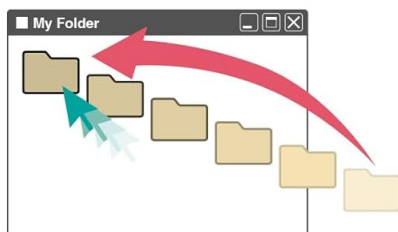


Image 3.2: Diagram illustrating the buttons for PowerPoint clicker functions, including Page Up/Down and Full/Black Screen.

3.3 Media Control and eBook Page Turning

Control your media playback and navigate eBooks with ease.

- **Play/Pause:** Press the 'Play/Pause' button.
- **Last/Next Episode:** Use the 'Previous Track' and 'Next Track' buttons.
- **Volume Control:** Use the '+' and '-' buttons to adjust volume.
- **eBook Page Turning:** The page up/down functions can be used to turn pages in compatible eBook applications (e.g., Kindle app). *Note: This device works with the Kindle app, not directly with Kindle e-readers like Oasis or Paperwhite.*



Image 3.3: The mouse being used for remote video control and eBook page turning on a tablet.

3.4 Switching Between Devices

The mouse allows seamless switching between Bluetooth and 2.4GHz connected devices.

- Use the side switch button to toggle between **BT** (Bluetooth) and **2.4G** (2.4GHz wireless) modes.
- The LED mode indicator will show blue for Bluetooth and green for 2.4GHz wireless, confirming the active connection mode.



Image 3.4: Illustration of the dual device connection capability, showing the mouse connected to a laptop via 2.4G and a tablet via Bluetooth.

4. MAINTENANCE

4.1 Battery Management

- Recharge the mouse when the notification LED flashes rapidly, indicating a low battery.
- A full charge provides approximately 75 hours of constant use or 2000 hours (83 days) of standby time.
- Avoid exposing the mouse to extreme temperatures or moisture, which can affect battery life.

4.2 Sleep Mode

To conserve battery, the mouse will enter sleep mode if not operated for a certain period, even when the power switch is ON. To recover from sleep mode, simply click any button on the mouse. Operation may be unstable immediately after recovery but will stabilize quickly.

4.3 Cleaning

Wipe the mouse with a soft, dry cloth. Avoid using harsh chemicals or abrasive cleaners.

5. TROUBLESHOOTING

5.1 Connection Issues

- **Mouse not connecting:** Ensure the power/connection switch is in the correct position (BT for Bluetooth, 2.4G for wireless). Check the notification LED for flashing blue (Bluetooth pairing) or green (2.4G connection).
- **Bluetooth pairing failed:** Make sure your device's Bluetooth is enabled and discoverable. Re-enter pairing mode on the mouse by holding the left and right buttons simultaneously.
- **2.4G wireless not working:** Ensure the USB receiver is securely plugged into your device. Try a different USB port.

5.2 Cursor Movement Issues

- **Cursor is slow or erratic:** Adjust the cursor speed in your operating system's mouse settings. For Windows 11, search for "Mouse settings" and adjust the "Mouse pointer speed" slider.

How to Adjust Cursor Speed for Windows 11

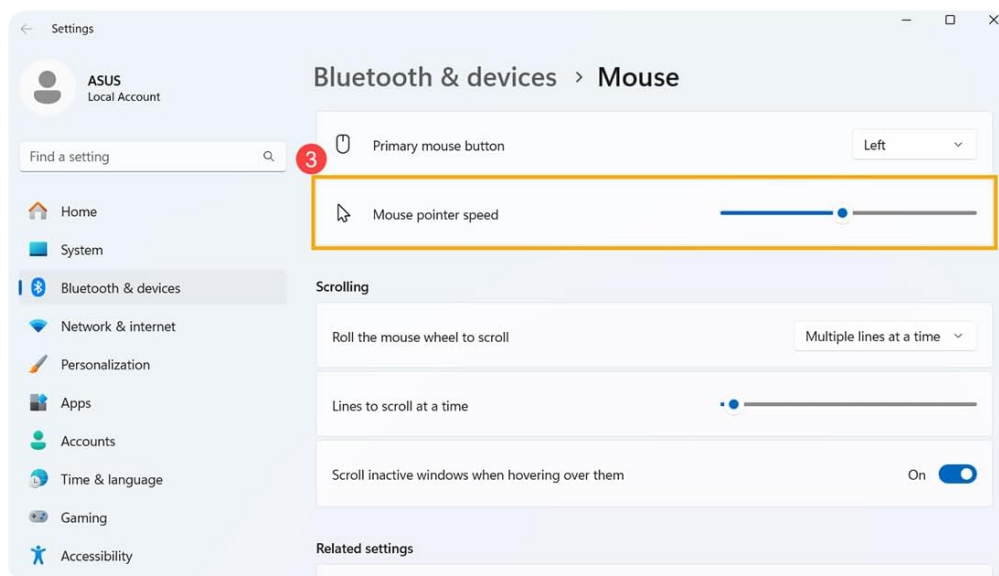
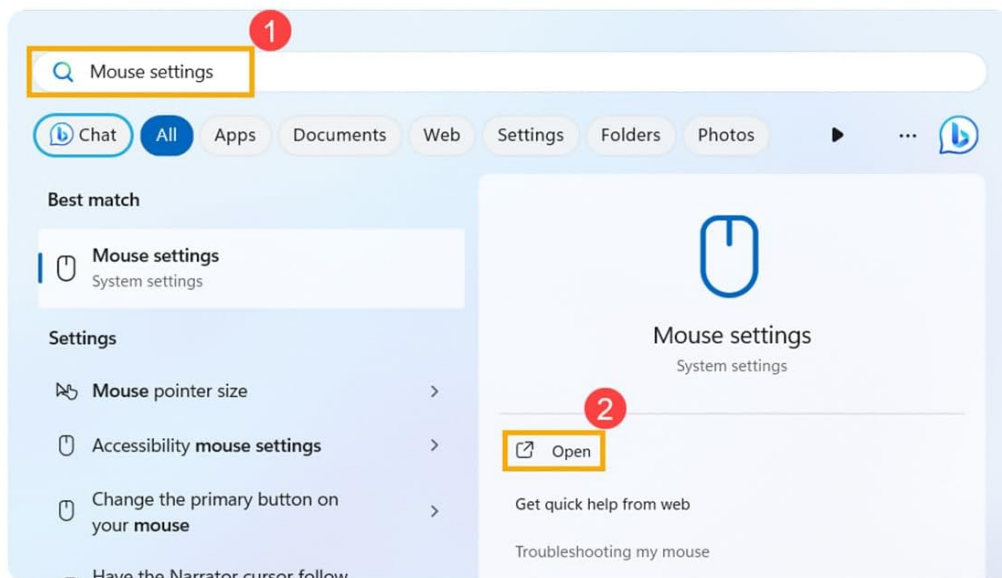


Image 5.1: Steps to adjust cursor speed in Windows 11 mouse settings.

5.3 Functionality Limitations

- **Presentation functions not working:** Ensure you are using compatible software (PowerPoint, Keynote, Google Slides). Note that full screen functionality may vary with Google Slides.
- **eBook page turning not working:** This feature is designed for eBook applications (e.g., Kindle app) and is not compatible with dedicated e-reader devices.

6. SPECIFICATIONS

Feature	Detail
Model Number	GMAWBT204BK
Connectivity	Bluetooth 5.0, 2.4GHz Wireless
Working Distance	Up to 32 feet (10 meters)
Default DPI	2000
Battery Type	Rechargeable Lithium-ion
Battery Capacity	500mAh
Constant Work Time	Approx. 75 hours
Standby Time	Approx. 2000 hours (83 days)
Charging Port	USB Type-C
Product Dimensions	11.4 x 5.8 x 0.04 inches (approximate)
Item Weight	3.52 ounces (approximate)
Color	Black
Compatible OS	Windows 11/10, macOS 14/13/12, Chrome OS, Android 13-14, iOS 14-17, iPadOS 14-17
Compatible Software	PowerPoint, Keynote, Google Slides

Product Size & Package List

for Windows11



Image 6.1: Product dimensions and a list of included accessories: receiver, charging cable, and USB receiver storage.

7. WARRANTY INFORMATION

Specific warranty details for the SANWA GMAWBT204BK Handheld Mouse are not provided within this manual. For information regarding warranty coverage, terms, and conditions, please refer to the official SANWA website or contact the retailer where the product was purchased.

8. CUSTOMER SUPPORT

For technical assistance, product inquiries, or further support, please visit the official SANWA website or contact their customer service department. Contact information is typically available on the product packaging or the manufacturer's website.

