

WOPET W03

WOPET Cat Water Fountain Pump (W03 Lite) - Instruction Manual

- [Introduction](#)
- [Overview](#)
- [Compatibility](#)
- [Installation](#)
- [Operation](#)
- [Maintenance](#)
- [Troubleshooting](#)
- [Specifications](#)
- [Warra](#)

INTRODUCTION

Welcome to your WOPET Cat Water Fountain Pump instruction manual. This guide provides essential information for the proper installation, operation, and maintenance of your replacement pump for the WOPET W03 Lite Cat Water Fountain. Please read these instructions carefully before use to ensure optimal performance and longevity of your product.

PRODUCT OVERVIEW

This replacement pump is designed specifically for the WOPET W03 Lite Ceramic Cat Water Fountain. It ensures continuous water circulation, providing fresh, filtered water for your pet. The pump is engineered for quiet operation and energy efficiency.



Image: The WOPET replacement pump, shown with two decorative fountain tops, highlighting its compact design.

COMPATIBILITY

This pump is exclusively compatible with the 101oz/3L WOPET W03 Lite Ceramic Cat Water Fountain. It is not designed for use with other fountain models. Using this pump with incompatible fountains may result in improper function or damage.

Only Compatible With WOpet WO3 Lite Pet Fountain



Image: The WOPET W03 Lite Cat Fountain disassembled, with the replacement pump positioned to show its intended fit.

INSTALLATION

Follow these steps to install the replacement pump into your WOPET W03 Lite Cat Water Fountain:

1. Ensure the fountain is unplugged from the power outlet and empty of water.
2. Carefully remove the existing pump from the fountain base.
3. Place the new WOPET W03 Lite replacement pump into the designated slot in the fountain base. Ensure it is securely seated.
4. Connect the pump's tubing to the fountain's water outlet.
5. Reassemble the fountain components, ensuring all parts are correctly aligned and sealed.
6. Fill the fountain with water to the recommended level before plugging it into a power outlet.

OPERATION

Once the pump is installed and the fountain is filled with water, plug the fountain into a suitable power outlet. The pump will begin circulating water, providing a continuous flow for your pet.

- The pump operates quietly, typically below 25dB, to minimize disturbance to pets and household members.
- Ensure the water level is consistently maintained above the minimum fill line to prevent the pump from running dry, which can cause damage or noise.

Ultra-Silent

<30dB



Image: A cat sleeping undisturbed next to a WOPET fountain, illustrating the pump's ultra-silent operation.

MAINTENANCE AND CLEANING

Regular cleaning of the pump is essential for its longevity, to maintain water quality, and to prevent noise. Mineral buildup and debris can affect pump performance.

1. Unplug the fountain from the power outlet and disassemble the pump from the fountain.
2. Remove the pump cover and carefully extract the impeller.
3. Clean all pump components, including the impeller, its housing, and the motor cavity, using a small brush (often included with the fountain) and clean water. Remove any hair or debris.
4. Rinse all parts thoroughly and reassemble the pump. Place it back into the fountain.

Recommendation: Clean the pump every two weeks to prevent mineral buildup and ensure optimal performance and quiet operation.

Easy to Disassemble and Clean

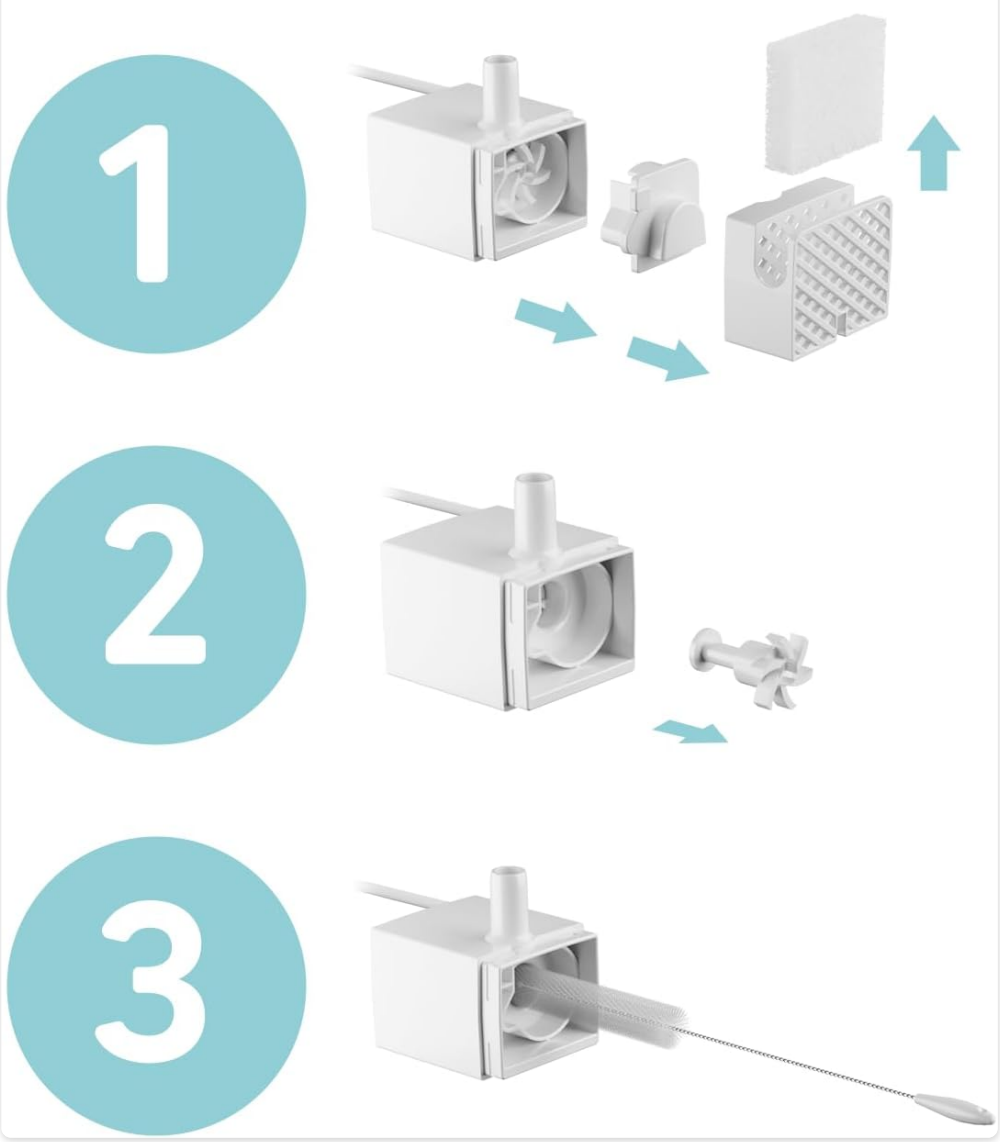


Image: A visual guide demonstrating the easy steps to disassemble and clean the pump components.

TROUBLESHOOTING

If you encounter issues with your WOPET pump, refer to the table below for common problems and solutions:

Issue	Possible Cause	Solution
Pump is noisy	Debris (e.g., pet hair) in impeller, low water level, mineral buildup	Disassemble and clean the pump thoroughly, especially the impeller. Ensure the water level in the fountain is adequate.
Pump not working	Clogged impeller, power connection issue, pump failure	Check the power connection to ensure it is secure. Disassemble and clean the pump to remove any blockages. If issues persist after cleaning, the pump may require replacement.

For further assistance, please contact WOPET customer support.

PRODUCT SPECIFICATIONS

- **Model:** W03 Lite Pump
- **Compatibility:** WOPET W03 Lite Ceramic Cat Water Fountain (101oz/3L)
- **Noise Level:** Below 25dB
- **Item Weight:** Approximately 4.2 ounces (0.12 Kilograms)
- **Dimensions (L x W x H):** Approximately 3.31 x 2.52 x 1.93 inches

- **Manufacturer:** WOPET

Product Size

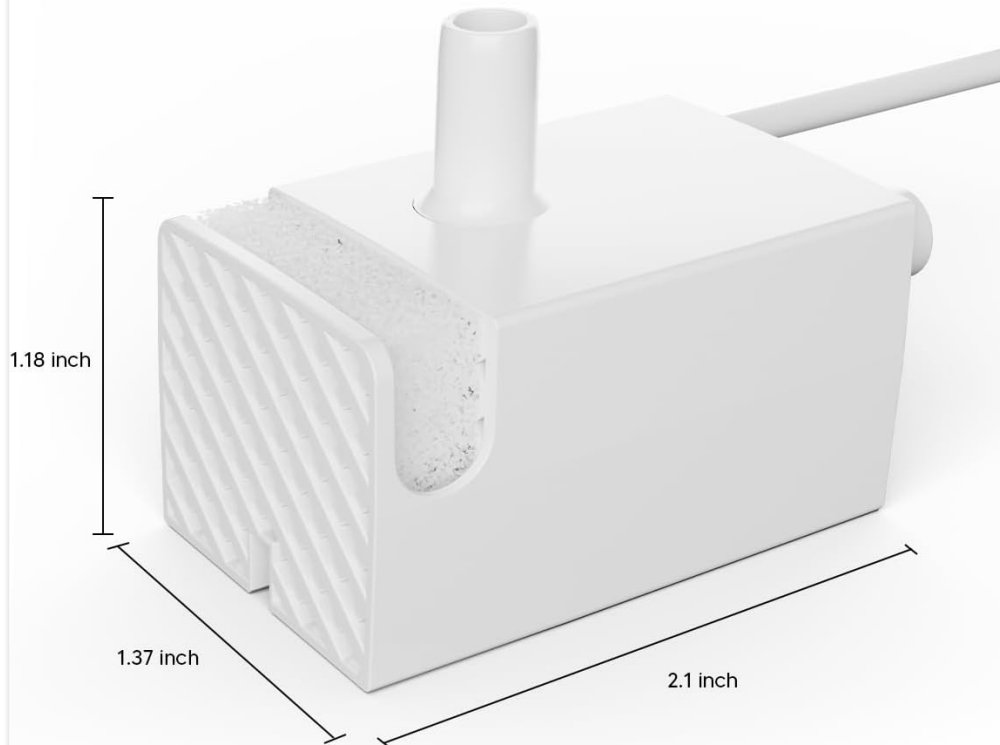


Image: A diagram illustrating the physical dimensions of the WOPET replacement pump.

WARRANTY INFORMATION

This WOPET pump comes with a **1-year warranty** from the date of purchase. The warranty covers manufacturing defects under normal use. Please retain your proof of purchase for any warranty claims. Damage resulting from improper use, lack of maintenance, or unauthorized modifications is not covered under this warranty.

CUSTOMER SUPPORT

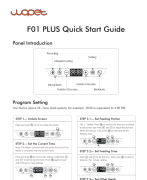
For any questions, concerns, or technical assistance regarding your WOPET Cat Water Fountain Pump, please contact WOPET customer service.

- **Online Support:** Visit the [WOPET Store on Amazon](#) for product information and support resources.
- **Availability:** WOPET offers 24-hour customer service to assist you.



Image: A visual representation of WOPET's commitment to 24-hour customer service.

Related Documents - W03

	<p>WOpet W600 Basin Pet Water Fountain User Manual - Setup, Maintenance & Warranty</p> <p>Comprehensive user manual for the WOpet W600 Basin Pet Water Fountain. Includes setup instructions, component details, maintenance tips, troubleshooting, and warranty information for pet owners.</p>
	<p>WOpet Patrol Pro WiFi Cat Feeder User Manual</p> <p>User manual for the WOpet Patrol Pro WiFi Automatic Cat Feeder, detailing setup, features, and remote control operation via the mobile app.</p>
	<p>WOpet Heritage Air 10 User Manual</p> <p>User manual for the WOpet Heritage Air 10 automatic pet feeder. Learn about feeder assembly, control panel functions, app instructions for the WOpet Life app, cleaning, maintenance, FAQs, and warranty information for models HA10P and HA10DP.</p>
	<p>WOpet Cube Lite 11 User Manual</p> <p>User manual for the WOpet Cube Lite 11 automatic pet feeder (Model CL11). Provides detailed instructions on feeder assembly, control panel functions, settings, and troubleshooting for pet owners.</p>
	<p>WOPET F01 PLUS Automatic Pet Feeder Quick Start Guide</p> <p>Concise guide to setting up and using the WOPET F01 PLUS automatic pet feeder, covering panel introduction, programming settings, and frequently asked questions for easy operation.</p>
	<p>WOPET FT50D Quick Start Guide - Easy Pet Feeding</p> <p>Get started with your WOPET FT50D automatic pet feeder. This guide provides step-by-step instructions for setup, programming feeding times and portions, and troubleshooting common issues for your pet's mealtime.</p>