



Manuals.plus /

› YITAHOME /

› YITAHOME 39" Dog Crate Furniture with Wheels Instruction Manual

YITAHOME MAYIH0e3ZC

YITAHOME 39" Dog Crate Furniture with Wheels Instruction Manual

MODEL: MAYIH0E3ZC

Introduction

Thank you for choosing the YITAHOME 39" Dog Crate Furniture. This product is designed to serve as both a secure indoor dog kennel and a functional piece of furniture, such as an end table or bedside cabinet. Its versatile design allows it to blend seamlessly with your home decor while providing a comfortable space for your pet. This manual provides essential information for assembly, operation, maintenance, and troubleshooting to ensure safe and effective use of your new dog crate furniture.

Safety Instructions

- Always ensure all parts are securely fastened before allowing your pet to use the crate.
- Do not exceed the maximum weight capacity of 200 lbs on the top panel.
- Regularly inspect the crate for any loose or damaged parts. Discontinue use if damage is found and contact customer support.
- This product is intended for indoor use only.
- While the product features a chew-resistant design, continuous supervision is recommended for pets prone to excessive chewing to prevent damage to the unit and potential injury to the pet.
- Keep small children away from the assembly area and ensure all hardware is out of their reach.

Package Contents

Before beginning assembly, please verify that all components are present and undamaged. The package should contain all necessary panels, hardware (screws, bolts, nuts), and wheels required for assembly. If any parts are missing or damaged, please contact YITAHOME customer support immediately.

Setup and Assembly

Assembly of the YITAHOME dog crate furniture is designed to be straightforward. Detailed installation instructions and all necessary accessories are included in the package. For faster and safer installation,

especially due to the item's size, it is recommended that two or more people assist with the assembly process.

1. Unpack all components and lay them out on a clean, soft surface to prevent scratches.
2. Identify each part by comparing it with the provided parts list in the separate instruction sheet.
3. Follow the step-by-step assembly guide provided with your product. Pay close attention to diagrams and hardware types.
4. Ensure all screws and bolts are tightened securely, but do not overtighten to avoid damaging the engineered wood material.
5. Attach the 360° lockable wheels to the bottom of the crate as instructed. Ensure they are firmly attached.

PRODUCT SIZE

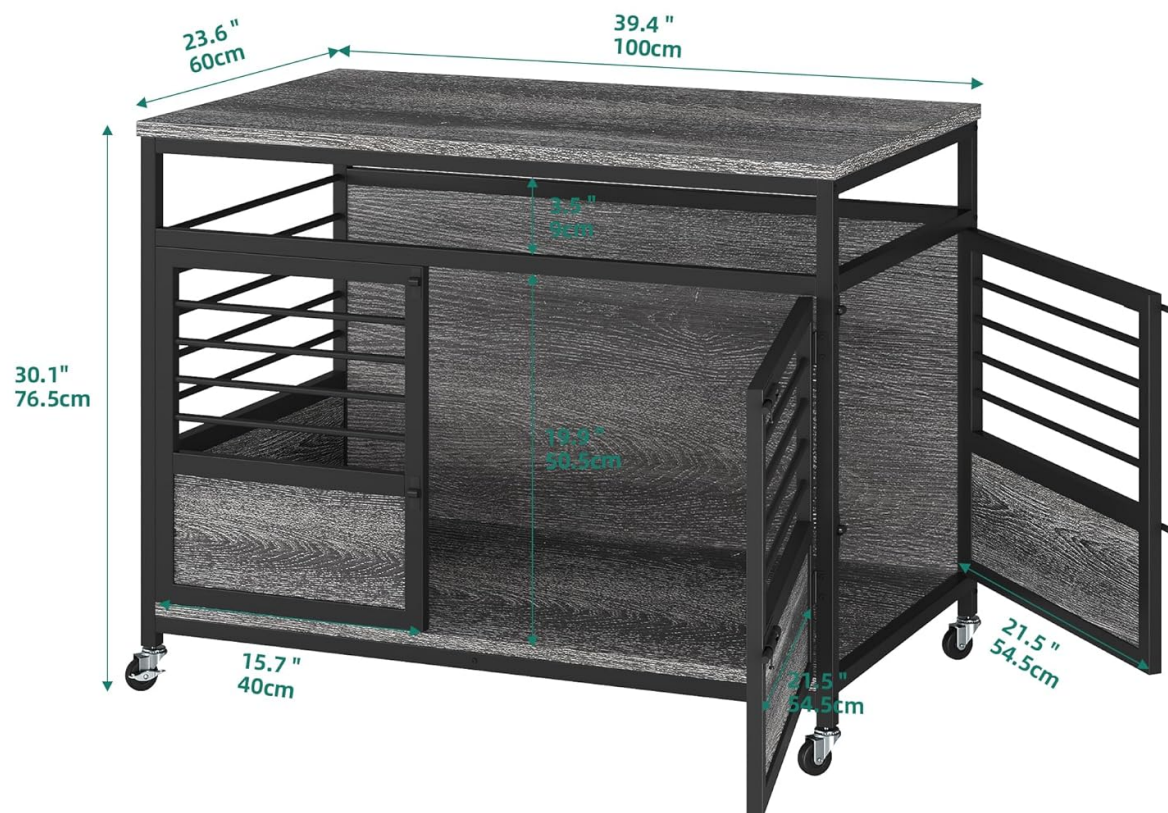


Figure 1: Product Dimensions and Recommended Dog Sizes. The crate measures approximately 39.4 inches (100 cm) in length, 23.6 inches (60 cm) in width, and 30.1 inches (76.5 cm) in height.



Figure 2: Assembled YITAHOME Dog Crate Furniture in a home environment.

Operating Instructions

This dog crate furniture offers dual functionality as a pet enclosure and a piece of home furniture.

Using as a Dog Kennel:

- Place your pet's bedding, toys, and water bowl inside the crate to create a comfortable and secure space.
- The double door design allows for easy access for your pet and for cleaning. Use the simple lock switches to secure the doors when your pet is inside.
- The interactive top design features a recessed area, allowing you to place treats or toys for your pet, fostering interaction.

Using as Furniture:

- The sturdy top panel can support up to 200 lbs, making it suitable for placing decorative items, books, or lamps.
- The 360° lockable wheels provide easy mobility. To move the crate, unlock the wheels. To secure it in place, engage the wheel locks.

DOUBLE DOOR DESIGN



Figure 3: Double Door Design for easy access.

EASY AND FLEXIBLE MOBILITY

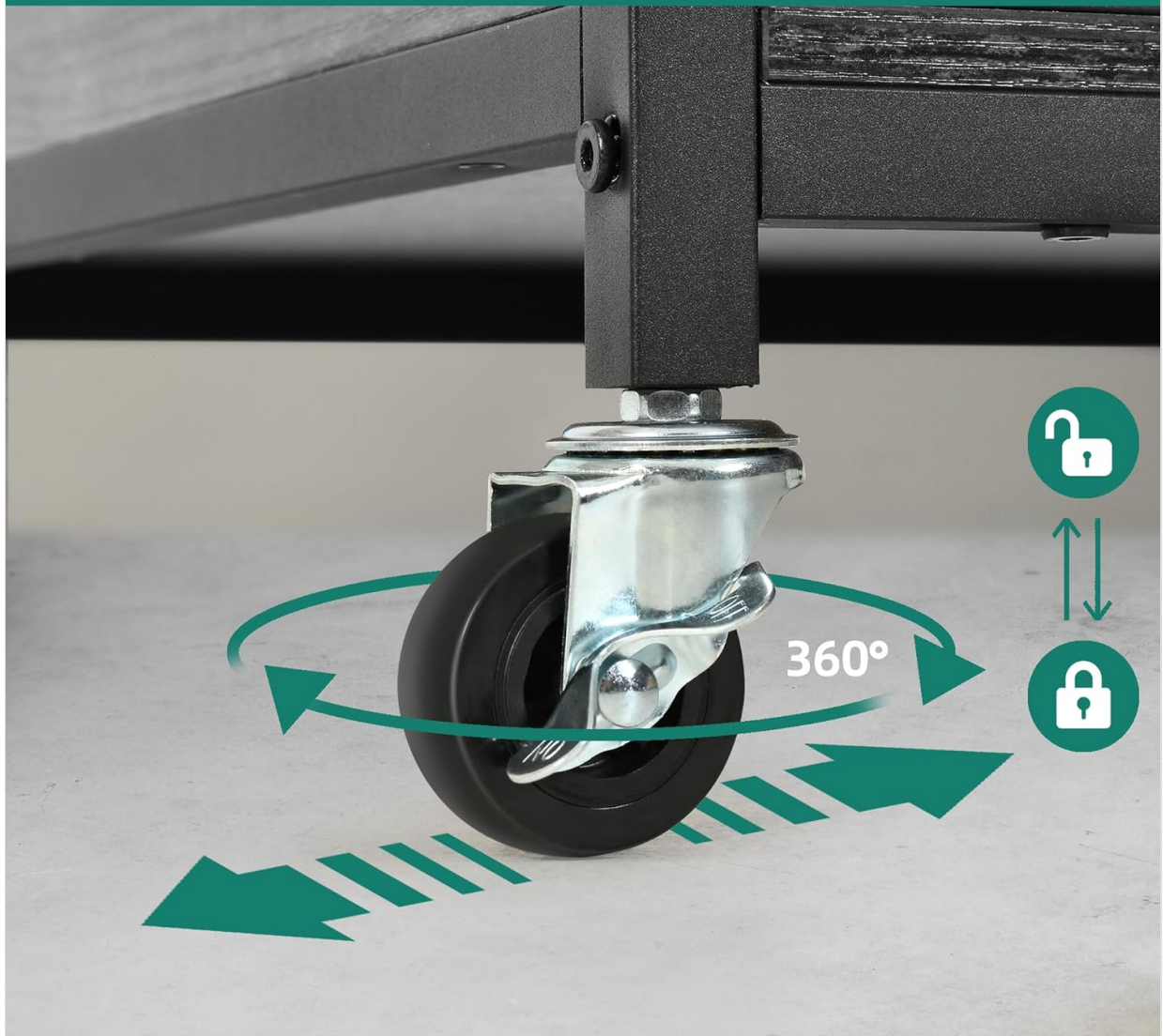


Figure 4: Easy and Flexible Mobility with 360° Lockable Wheels.

Maintenance

Proper maintenance will extend the life and appearance of your dog crate furniture.

- **Cleaning:** The smooth surfaces of the engineered wood are easy to clean. Wipe down regularly with a soft, damp cloth. Avoid abrasive cleaners or harsh chemicals that could damage the finish.
- **Inspection:** Periodically check all hardware connections to ensure they remain tight. Retighten if necessary.
- **Damage:** If any part of the crate becomes damaged, especially the metal bars or wood panels, discontinue use to prevent injury to your pet.

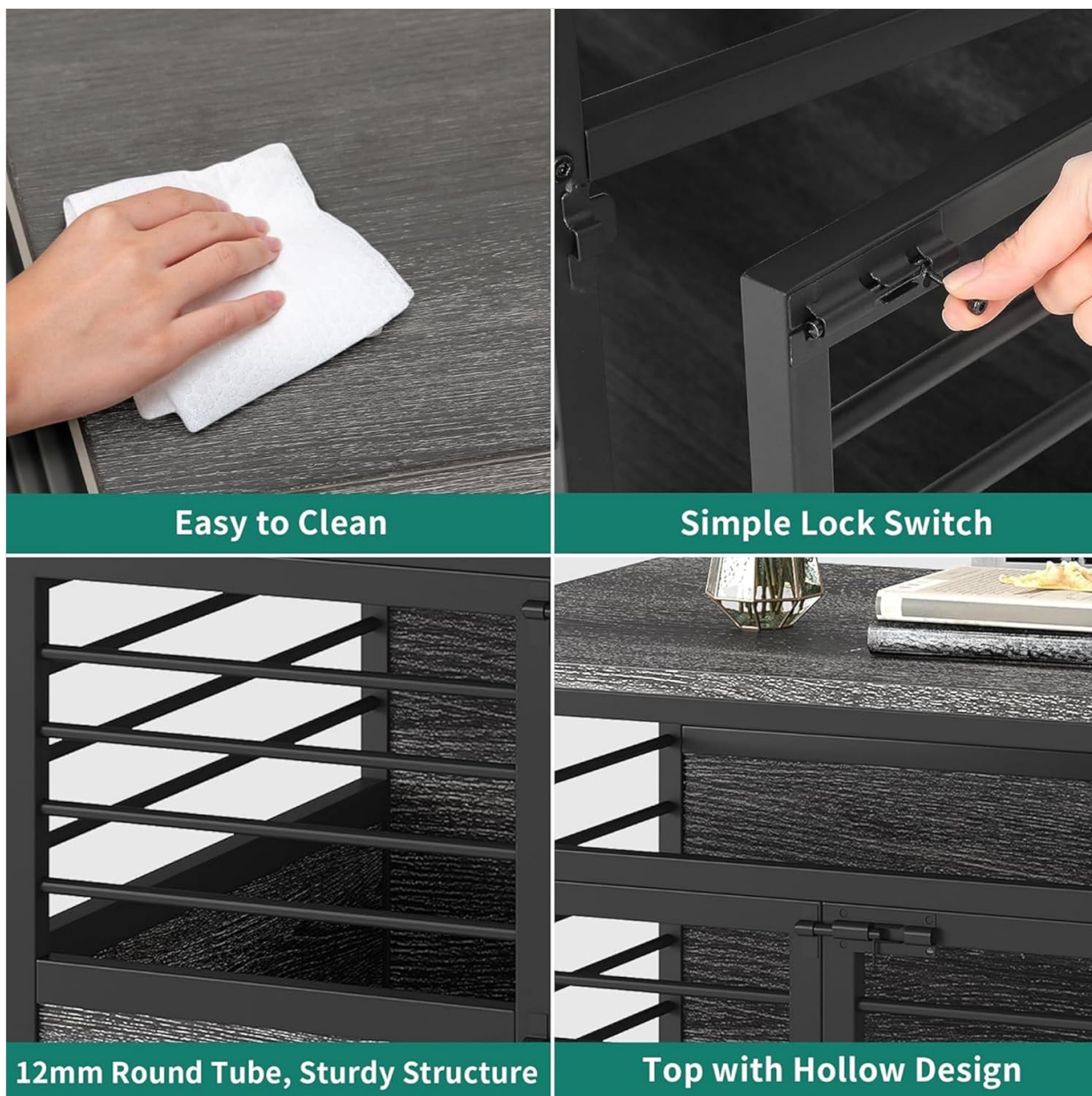


Figure 5: Easy to Clean surface and other key features.

Troubleshooting

If you encounter any issues with your YITAHOME dog crate furniture, please refer to the following common solutions:

- **Assembly Difficulties:** Review the assembly instructions carefully. Ensure all parts are oriented correctly and that the correct hardware is used for each step. If parts do not fit, double-check for manufacturing defects or incorrect orientation.
- **Wobbly Structure:** Ensure all screws and bolts are fully tightened. A loose connection can cause instability.
- **Wheels Not Locking:** Verify that the locking mechanism on each wheel is fully engaged. If a wheel is damaged, it may need replacement.
- **Pet Chewing:** While designed to be chew-resistant, no product is entirely indestructible. If your pet is excessively chewing the crate, consider using chew deterrents or providing alternative chew toys. Supervise your pet's behavior.

For issues not covered here, or if problems persist, please contact YITAHOME customer support.

Specifications

Feature	Detail
Model Number	MAYIH0e3ZC
Product Dimensions (L x W x H)	100.1 cm x 59.9 cm x 76.5 cm (39.4 in x 23.6 in x 30.1 in)
Item Weight	28.3 kg (62.4 lbs)
Material	Engineered Wood
Target Species	Dog
Special Feature	Portable (with lockable wheels)
Top Panel Weight Capacity	Up to 200 lbs
UPC	197839362703

Warranty and Support

For information regarding product warranty, returns, or technical support, please contact YITAHOME customer service directly. Refer to the contact information provided with your purchase or visit the official YITAHOME website for assistance.