

## Philips BHD839/00

# Philips BHD839/00 Hair Dryer User Manual

Model: BHD839/00 | Brand: Philips

## 1. IMPORTANT SAFETY INFORMATION

Please read all safety warnings and instructions before using this appliance. Failure to follow the warnings and instructions may result in electric shock, fire, and/or serious injury.

- **Overheating Warning:** Be aware of potential overheating. If the appliance overheats, it will automatically shut off. Allow it to cool down before resuming use.
- **Automatic Cleaning Mode:** Wait for the automatic cleaning mode to complete before attempting any manual cleaning of the filter.
- **Power Supply:** Always check that the voltage indicated on the appliance corresponds to your local mains voltage before connecting the appliance.
- Do not use this appliance near water.
- Do not block the air inlet or outlet grilles during use.
- Keep the appliance away from flammable materials.

## 2. PRODUCT OVERVIEW

The Philips BHD839/00 Hair Dryer is designed for fast and efficient hair drying while protecting your hair from heat damage. It features advanced ThermoShield temperature sensors and ionic technology for strong, shiny, and well-hydrated hair.



**Figure 2.1:** Front view of the Philips BHD839/00 Hair Dryer. This image shows the overall design of the hair dryer, highlighting its compact and ergonomic shape in blue.

### Key Features:

- **Fast Drying:** Achieve perfectly dry hair in 3 minutes or less, thanks to an advanced brushless DC motor (110,000 rpm) generating airflow at 228 km/h.
- **ThermoShield Technology:** Advanced temperature sensors protect hair from heat damage, ensuring strong, shiny, and well-hydrated results.
- **Ionic Care:** Releases up to 200 million negative ions and water to boost hair shine by up to 58% and reduce frizz, leaving hair soft and supple.
- **Dual Airstream Technology:** Extracts air through two inlets simultaneously, concentrating it into a powerful, smooth airflow for enhanced shine and reduced frizz.
- **7 Heat Settings:** Provides versatile styling options for different hair types and preferences.
- **Compact and Lightweight:** Weighing only 395g, it is comfortable to use and convenient for travel.
- **Energy Efficient:** Consumes up to 50% less energy compared to other Philips high-speed hair dryers while maintaining powerful drying performance.



**Figure 2.2:** Rear view of the Philips BHD839/00 Hair Dryer, showing the control panel and digital display. This image illustrates the intuitive button layout for adjusting settings.

### 3. SETUP

---

Follow these steps to set up your Philips BHD839/00 Hair Dryer for first use.

1. **Unpack the Appliance:** Carefully remove the hair dryer and all accessories from the packaging. Retain the packaging for future storage or transport.
2. **Check Contents:** Ensure all components are present: the hair dryer unit, one magnetic 8mm styling nozzle, and one diffuser.
3. **Attach Accessories:** To attach the styling nozzle or diffuser, align it with the air outlet and gently push until it clicks into place. The magnetic attachment ensures a secure fit.



**Figure 3.1:** The Philips BHD839/00 Hair Dryer with the styling nozzle attached. This demonstrates how accessories are connected to the main unit.

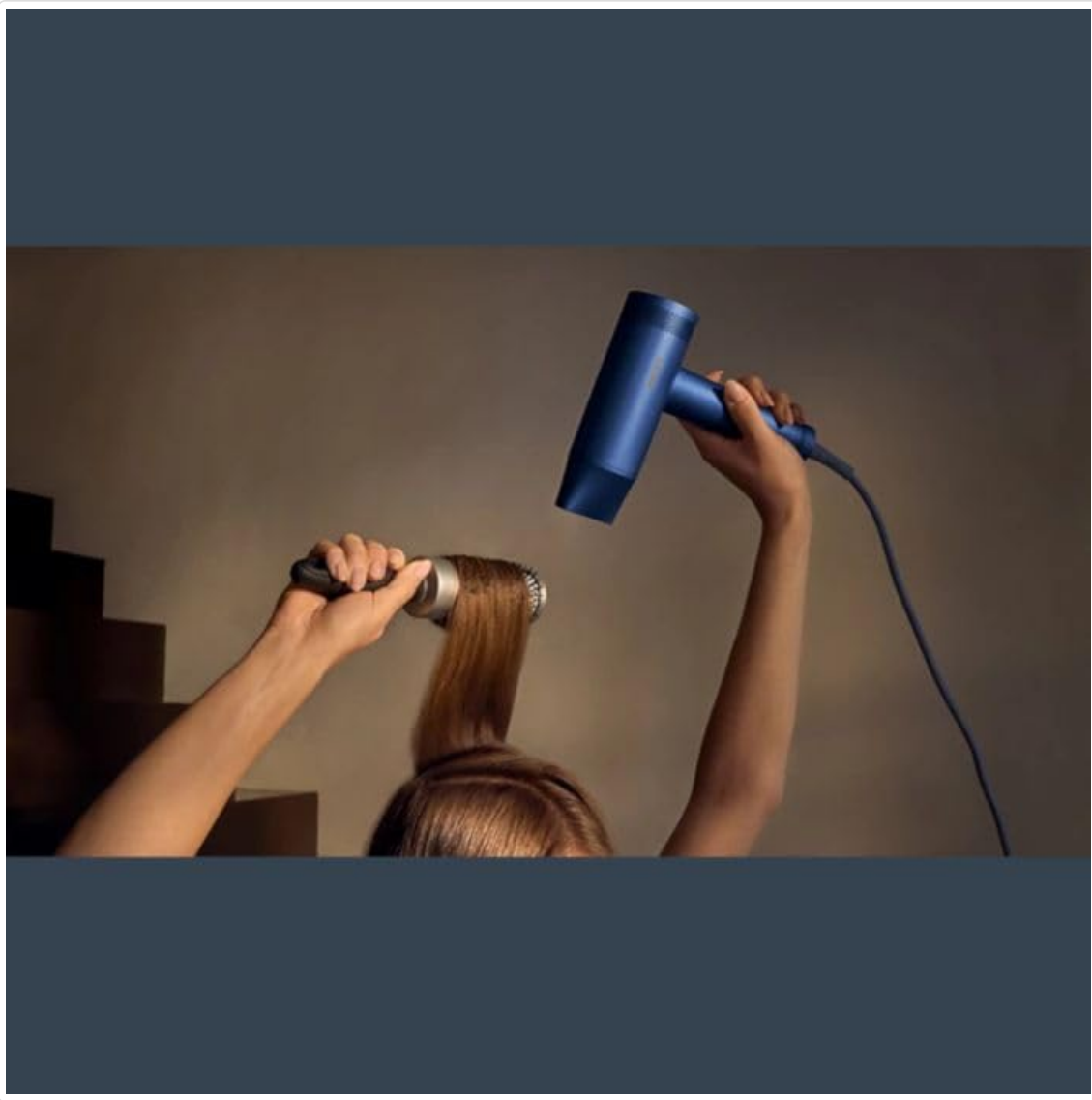
4. **Connect to Power:** Plug the power cord into a suitable electrical outlet. Ensure the voltage matches the appliance's specifications.

## 4. OPERATING INSTRUCTIONS

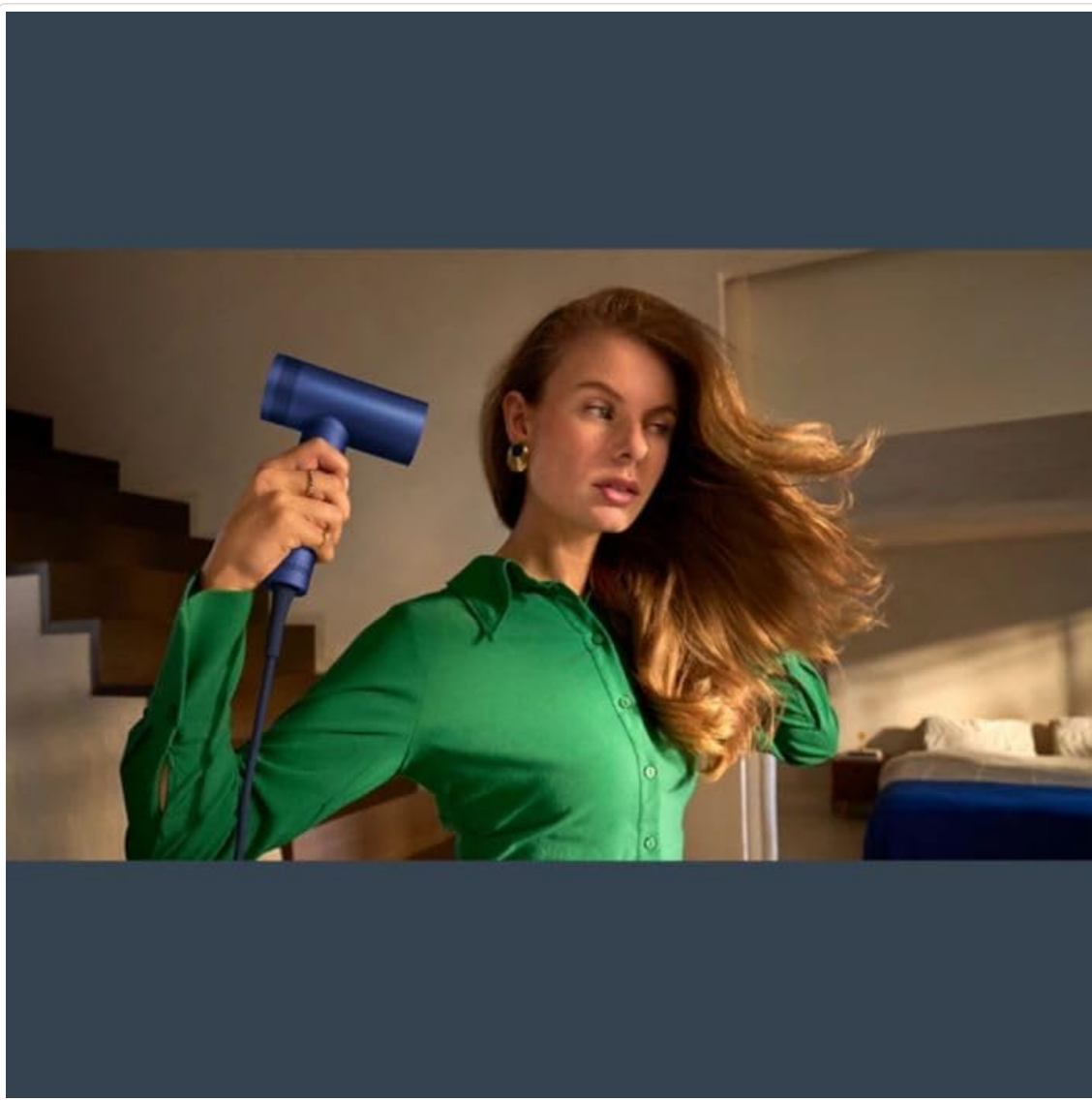
---

Learn how to effectively use your Philips BHD839/00 Hair Dryer for optimal results.

1. **Power On/Off:** Press the power button located on the handle to turn the hair dryer on or off.
2. **Adjusting Heat Settings:** Use the heat setting button to cycle through the 7 available heat levels. The current setting will be displayed on the digital screen.
3. **Adjusting Speed Settings:** Use the speed setting button to select your desired airflow speed. There are multiple speed options to choose from.
4. **Using the Styling Nozzle:** For precise styling and smoothing, attach the 8mm styling nozzle. Direct the airflow onto sections of hair while brushing.
5. **Using the Diffuser:** For enhancing natural curls and adding volume, attach the diffuser. Gently cup sections of hair in the diffuser bowl and lift towards the scalp.
6. **Ionic Function:** The ionic function is automatically active when the dryer is on, helping to reduce frizz and enhance shine.
7. **Cool Shot Function:** Press and hold the cool shot button to deliver a burst of cool air, which helps to set your hairstyle.



**Figure 4.1:** A person using the Philips BHD839/00 Hair Dryer with a brush to style their hair. This illustrates a common method of use for achieving smooth results.



**Figure 4.2:** A person using the Philips BHD839/00 Hair Dryer to dry their hair. This image shows the hair dryer in active use, demonstrating its ergonomic handling.

## 5. MAINTENANCE

---

Regular maintenance ensures the longevity and optimal performance of your hair dryer.

1. **Automatic Cleaning Mode:** The hair dryer features an automatic cleaning mode. To activate, ensure the appliance is unplugged, then follow the instructions in the full manual (if available) or press and hold the designated button (refer to Figure 2.2 for button location) to initiate the fan blade reverse rotation, which removes dust from the filter.
2. **Exterior Cleaning:** Wipe the exterior of the hair dryer with a soft, damp cloth. Do not use abrasive cleaners or solvents.
3. **Filter Cleaning:** While the automatic cleaning mode handles most dust, periodically check the air inlet grille for any accumulated lint or hair. If necessary, gently remove it with a soft brush or cloth. Ensure the appliance is unplugged before cleaning.
4. **Storage:** Store the hair dryer in a dry, safe place, away from direct sunlight and moisture. Do not wrap the cord tightly around the appliance.

## 6. TROUBLESHOOTING

---

If you encounter issues with your Philips BHD839/00 Hair Dryer, refer to the following common problems and solutions.

Problem	Possible Cause	Solution
---------	----------------	----------

Problem	Possible Cause	Solution
Hair dryer does not turn on.	No power supply; faulty outlet; appliance malfunction.	Check if the power cord is securely plugged in. Test the outlet with another appliance. If the problem persists, contact customer support.
Airflow is weak.	Air inlet/outlet blocked; dirty filter.	Ensure air inlet and outlet grilles are clear. Run the automatic cleaning mode or manually clean the filter as described in Section 5.
Hair dryer overheats and shuts off.	Blocked airflow; prolonged use.	Unplug the appliance and allow it to cool down for several minutes. Check for any blockages in the air grilles. Ensure the filter is clean.
Unusual noise or smell.	Internal issue; foreign object.	Immediately unplug the appliance. Do not attempt to repair it yourself. Contact Philips customer support.

## 7. SPECIFICATIONS

---

Detailed technical specifications for the Philips BHD839/00 Hair Dryer.

**Model Name:** Philips BHD839/00

**Power:** 1400 W

**Number of Heat Settings:** 7

**Number of Speeds:** 7

**Special Features:** Brushless DC Motor, Ionic Technology, ThermoShield Advanced Sensors, Dual Airstream Technology, Automatic Cleaning Mode

**Material:** Plastic

**Color:** Blue

**Product Dimensions (L x W x H):** 7.3 x 18.1 x 30.1 cm

**Weight:** 500 grams (approx. 395g for the dryer unit itself)

**Power Source:** Corded Electric

**Recommended Uses:** Drying, Styling

**Components Included:** 1x Philips Series 8000 Hair Dryer, 1x 8mm Magnetic Styling Nozzle, 1x Diffuser

## 8. WARRANTY AND SUPPORT

---

Philips products are designed and manufactured to the highest quality standards. This product is covered by a standard manufacturer's warranty.

- **Warranty Information:** For detailed information regarding the warranty period and terms, please refer to the warranty card included with your product or visit the official Philips website.
- **Customer Support:** If you have any questions, require technical assistance, or need to report a fault, please contact Philips customer support. Contact details can be found in the product packaging or on the official Philips support website.
- **Online Resources:** Visit [www.philips.com/support](https://www.philips.com/support) for FAQs, additional manuals, and product registration.