

Manuals+

[Q & A](#) | [Deep Search](#) | [Upload](#)

[manuals.plus](#) /

> [JOYROOM](#) /

> [JOYROOM OE3 Clip-On Earbuds User Manual](#)

JOYROOM JR-OE3

JOYROOM OE3 Clip-On Earbuds User Manual

Model: JR-OE3

PRODUCT OVERVIEW

The JOYROOM OE3 Clip-On Earbuds are designed for comfort and immersive sound, featuring an open-ear design that allows awareness of surroundings while delivering clear audio. They are ultra-lightweight and suitable for various activities, from workouts to daily use.

- **Superior Sound & Comfort with L-Shaped Open Ear Clip-On Design:** Positioned closer to the ear canal for clearer sound and minimal leakage. Made from high-elastic, skin-friendly silicone, weighing just 4.9g for secure, comfortable fit during extended wear.
- **Omni Tap Control:** Innovative omni-touch technology allows touch response anywhere on the headset for easy volume adjustment, track skipping, or call answering. Customizable via the JOYROOM Audio APP.
- **Auto Left-Right Recognition:** Automatically detects wearing orientation and adjusts audio output for perfectly balanced sound without manual setup.
- **Immersive Sound Experience:** Features a 13mm driver, composite diaphragm, and high-sensitivity magnet for crisp highs, natural mids, and deep bass. Includes a 12-layer spatial sound algorithm, exclusive panoramic enhancement, Bass Boost Mode, and AI-powered ENC for crystal-clear calls.
- **JOYROOM Audio APP:** Personalize your experience with adjustable touch controls, EQ presets, low-frequency boost, "Find My Earbuds" feature, and Game Mode for low-latency audio. Supports dual-device connection.

PACKAGE CONTENTS

Ensure all items are present in the package:

- Open Ear Headphones x 2
- Charging Case x 1
- USB C Charging Cable x 1



Image: JOYROOM OE3 Clip-On Earbuds in their charging case, showcasing the product and its primary accessory.

SETUP GUIDE

1. Initial Charging

Before first use, fully charge the earbuds and the charging case. Connect the USB-C charging cable to the charging case and a power source. The indicator light on the case will show charging status.

2. Pairing with Your Device

1. Ensure the earbuds are in the charging case and the case lid is open.
2. On your device (smartphone, tablet, laptop), enable Bluetooth.
3. Search for "JOYROOM OE3" in the list of available Bluetooth devices.
4. Select "JOYROOM OE3" to connect. A voice prompt will confirm successful pairing.

3. Wearing the Earbuds

The OE3 earbuds feature an L-shaped clip-on design for a secure and comfortable fit. Insert the earbud starting from the thinnest part of your outer ear and adjust for a snug fit. The earbuds are designed to be lightweight and pressure-free for extended wear.

Innovative L-Shape Design

Stability

200% 

Comfort

200% 



Image: A user wearing the JOYROOM OE3 earbuds, illustrating the L-shaped design that ensures stability and comfort during various activities.

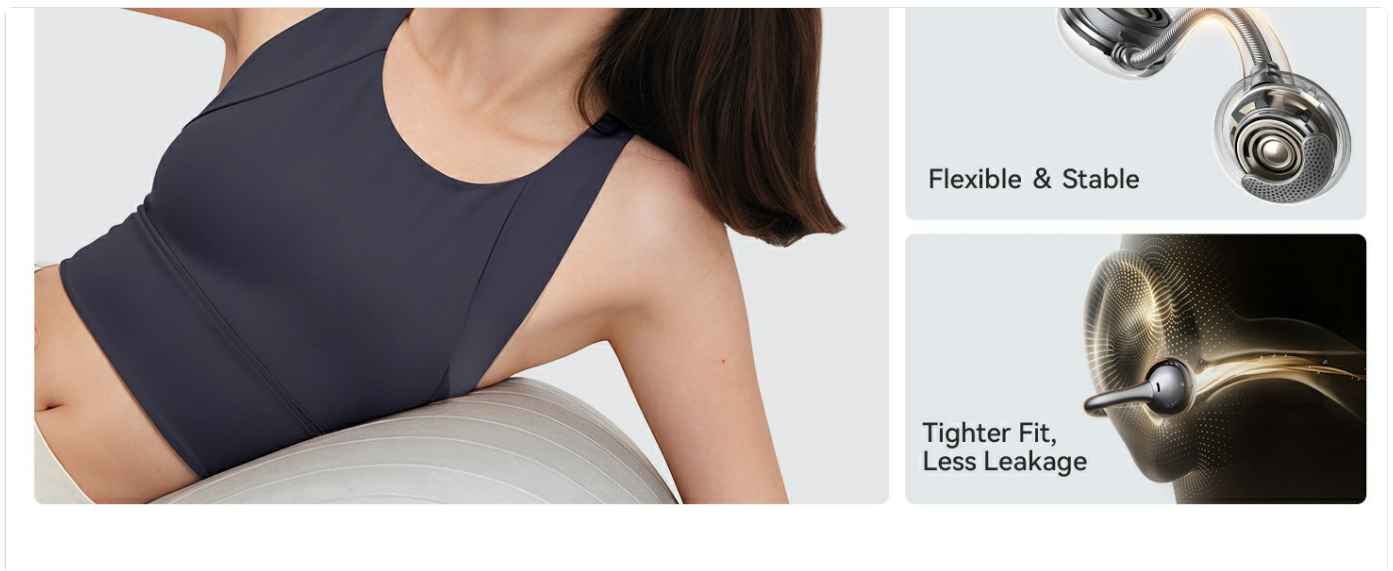


Image: A step-by-step diagram illustrating the correct method for wearing the JOYROOM OE3 clip-on earbuds, ensuring a secure and comfortable fit.

The earbuds feature Auto Left-Right Recognition, so you do not need to worry about which earbud goes into which ear. They will automatically adjust the audio output.

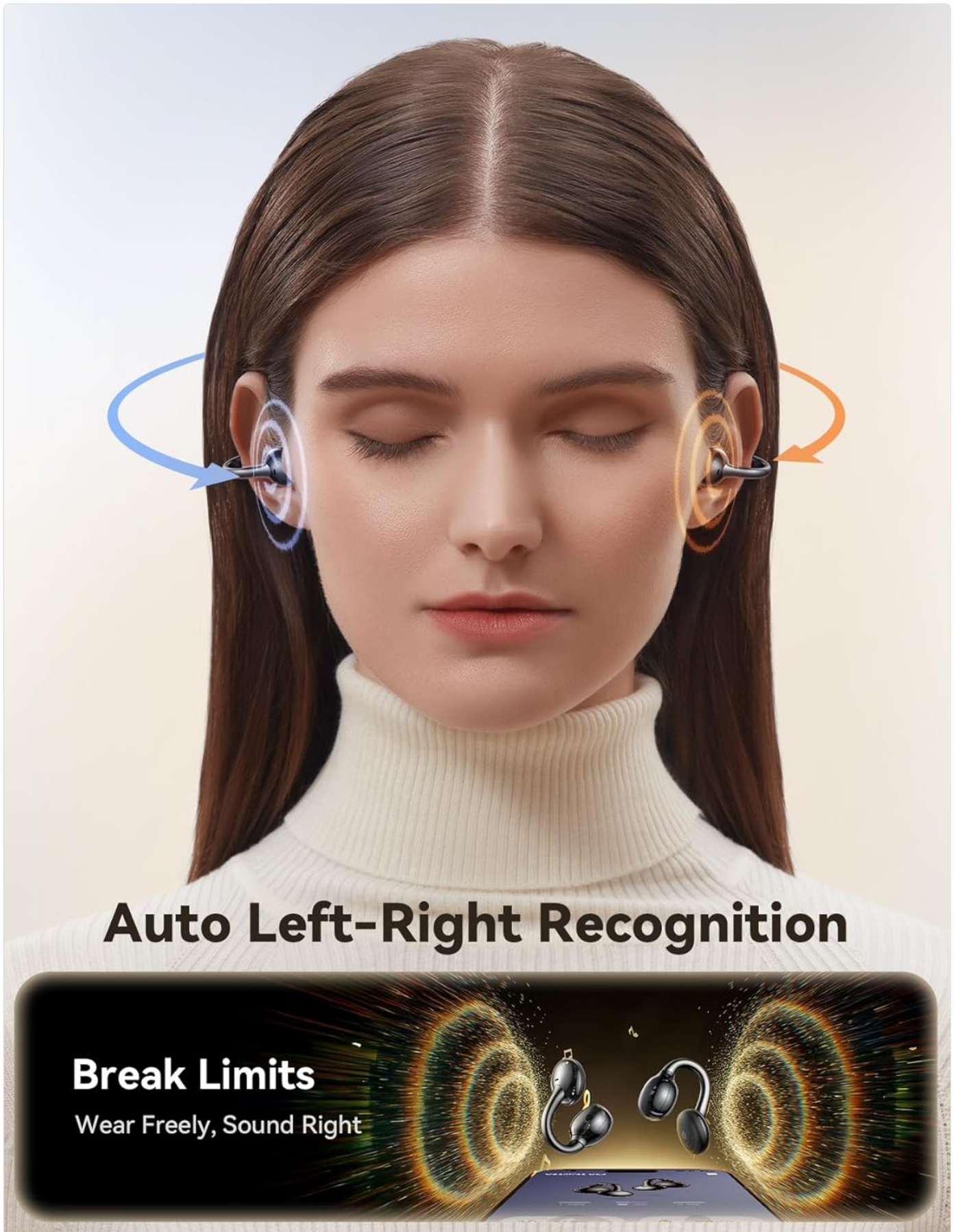


Image: Visual representation of the earbuds' auto left-right recognition feature, showing how they adapt to wearing orientation for balanced sound.

OPERATING INSTRUCTIONS

Omni Tap Control

The JOYROOM OE3 earbuds feature Omni Tap Control, allowing you to tap anywhere on the earbud for instant response. This eliminates the need for precise touch areas.



Omni Tap Control

Tap Anywhere, Instant Response
Ditch the Limited Touch Controls
of Traditional Earbuds

Image: A user interacting with the earbud, demonstrating the Omni Tap Control feature which allows touch input anywhere on the earbud for easy control.

Basic Controls:

Action	Control
Play/Pause Music	Double tap either earbud.
Next Track	Triple tap the right earbud.
Previous Track	Triple tap the left earbud.
Answer/End Call	Double tap either earbud.
Reject Call	Press and hold either earbud for 2 seconds.
Activate Voice Assistant	Press and hold either earbud for 3 seconds.

JOYROOM Audio APP Features

Download the JOYROOM Audio APP to unlock advanced features and customize your listening experience:

- **Equalizer (EQ) Presets:** Adjust sound profiles to match your preferences.
- **Bass Boost:** Enhance low-frequency sounds for a richer audio experience.
- **Low Latency (Game Mode):** Optimize audio-visual synchronization for gaming.
- **Find My Earbuds:** Locate misplaced earbuds by triggering an audible alert.
- **Gesture Customization:** Personalize touch controls for various functions.
- **Dual-Device Connection:** Seamlessly switch between two connected devices (e.g., phone and laptop) without re-pairing.

3 POWERFUL UPGRADES

New Smart App Experience

Equalizer
Low Latency
Bass Boost
Find Earbuds
Gesture Control



Dual Device Connection

Seamless Switching



Next-Gen Bluetooth 5.4

Faster and More Stable



Image: The JOYROOM Audio App interface, highlighting key features such as Equalizer, Gestures, Bass Boost, Low Latency, Dual Connection, and Find Earbuds for personalized control.

All-Day Comfort, No Pressure

Innovative L- Shaped Design

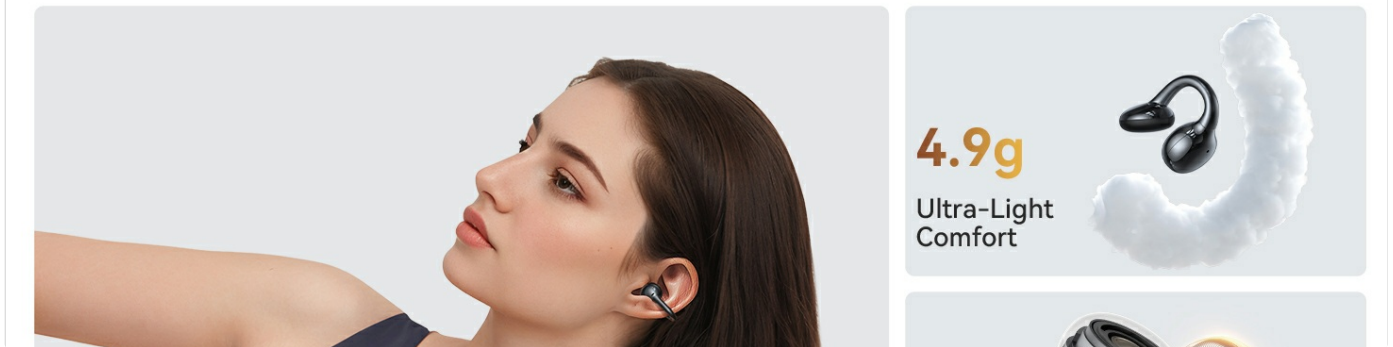


Image: A user interacting with the JOYROOM Audio App on a smartphone, demonstrating how the application allows for smart customization and control of the earbuds.



Image: A visual illustrating the dual device connection capability of the JOYROOM OE3 earbuds, showing seamless switching between a smartphone and a tablet.

Official Operating Instructions Video

Your browser does not support the video tag.

Video: Official operating instructions for the JOYROOM OE3 Clip-On Earbuds, demonstrating various functions and controls.

MAINTENANCE AND CARE

- **Cleaning:** Use a soft, dry cloth to clean the earbuds and charging case. Do not use abrasive cleaners or solvents.
- **Storage:** Store the earbuds in their charging case when not in use to protect them and keep them charged.
- **Water Resistance:** The earbuds are IPX4 water-resistant, meaning they are protected against splashing water from any direction. They are suitable for workouts and light rain but should not be submerged in water.
- **Temperature:** Avoid exposing the earbuds to extreme temperatures (hot or cold) as this can affect battery life and performance.

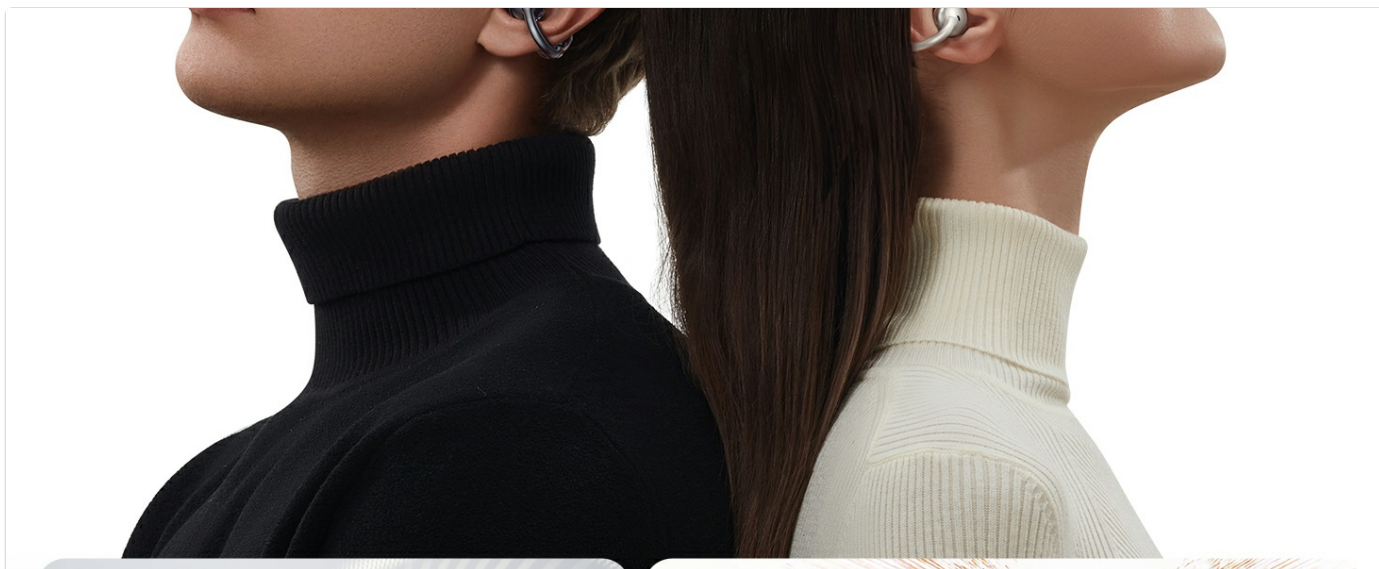


Image: A user engaged in physical activity, demonstrating the IPX4 water-resistant feature of the earbuds, suitable for sweat and light splashes.

TROUBLESHOOTING

Problem	Possible Solution
Earbuds not pairing	Ensure earbuds are charged. Turn Bluetooth off and on again on your device. Place earbuds back in case, close lid, then open to re-enter pairing mode.
Only one earbud working	Ensure both earbuds are charged. Place both earbuds back in the charging case, close the lid, wait a few seconds, then open the lid and try connecting again.
Low volume or poor sound quality	Adjust the earbuds' position in your ear for a better fit. Clean any debris from the speaker mesh. Check volume levels on both your device and through the JOYROOM Audio APP.
Touch controls not responding	Ensure your fingers are clean and dry. Try restarting the earbuds by placing them in the case and taking them out. Check touch control settings in the JOYROOM Audio APP.
Earbuds not charging	Ensure the charging cable is securely connected. Check for debris in the charging port of the case and on the earbuds' charging contacts. Try a different charging cable or power source.

SPECIFICATIONS

Feature	Detail
Model Name	JR-OE3
Connectivity Technology	Wireless (Bluetooth 5.4)
Noise Control	Environmental Noise Cancellation (ENC)
Driver Size	13mm
Earbud Weight	4.9g (each)
Water Resistance Level	IPX4

Feature	Detail
Battery Life (Earbuds)	Up to 6 hours (single charge)
Battery Life (with Charging Case)	Up to 30 hours total
Frequency Range	20Hz - 20,000Hz
Impedance	16 Ohm
Material	Silicone
Compatible Devices	Cellphones, Tablets, Laptops

WARRANTY AND SUPPORT

For warranty information and customer support, please refer to the official JOYROOM website or contact their customer service directly. Keep your purchase receipt for warranty claims.

Online Support: Visit the [JOYROOM Store on Amazon](#) for product information and updates.