

Xmagpot T3

Ultra Xmagpot Bluetooth 5.4 Transmitter Receiver User Manual

Model: T3

1. PRODUCT OVERVIEW

The Xmagpot Ultra Xmagpot Bluetooth 5.4 Transmitter Receiver (Model T3) is a versatile audio device designed to seamlessly transmit and receive audio signals wirelessly. Featuring advanced Bluetooth 5.4 technology with Qualcomm chips, it offers high-fidelity audio, low latency, and stable connections. Its dual-link capability allows for simultaneous connection to two Bluetooth headphones, making it ideal for shared listening experiences. The device boasts a premium design with a CNC aluminum frame and ceramic glass, ensuring durability and a sleek aesthetic. It is suitable for various applications, including in-flight entertainment, home theater systems, car audio, and gym equipment.



Image: The Xmagpot T3 Bluetooth Transmitter Receiver, showcasing its compact design, attached 3.5mm audio jack, and a dual-pin airplane adapter.

Key Features:

- **Bluetooth 5.4 Technology:** Ensures broad compatibility, faster pairing, and stable connections.
- **aptX Adaptive/HD Audio:** Delivers lossless, CD-quality audio with minimal latency.
- **Dual-Link Functionality:** Connects to two Bluetooth headphones simultaneously for shared audio.
- **TX (Transmitter) & RX (Receiver) Modes:** Easily switch between transmitting audio from non-Bluetooth devices or receiving audio from Bluetooth sources.

- **Premium Build:** Aerospace-grade CNC metal frame and ultra-tough ceramic glass for durability and a high-end feel.
- **Long Battery Life:** Up to 18 hours of music playback on a single charge, with 1.5-hour quick charge.
- **Wide Compatibility:** Includes 3.5mm audio jack and dual 3.5mm adapter for use with various devices like TVs, airplanes, cars, and gym equipment.
- **Intuitive Controls:** Tactile mechanical buttons and LED indicators for easy operation.

2. SAFETY INFORMATION

This product is designed with user safety in mind and meets global quality standards. Please read and adhere to the following safety guidelines:

- **Certifications:** The Xmagpot T3 is certified by FCC, CE, RoHS, and BQB, ensuring compliance with international safety and environmental standards.
- **Protection Features:** Equipped with voltage endurance, overcurrent, short circuit, and NTC overheat protection to prevent damage to the device and connected equipment.
- **Disposal:** Always dispose of the product and its components in accordance with local regulations for electronic waste. Do not dispose of with household waste.
- **Usage Environment:** Avoid exposing the device to extreme temperatures, direct sunlight, or high humidity. Keep away from water and flammable liquids.
- **Cleaning:** Use a soft, dry cloth for cleaning. Do not use abrasive cleaners or solvents.

3. GETTING STARTED

Package Contents:

- Xmagpot T3 Bluetooth Transmitter Receiver
- USB-C Charging Cable
- Dual 3.5mm Airplane Adapter
- User Manual
- RCA Audio Cable (if included in your package)



Image: The Xmagpot T3 device, its packaging, USB-C charging cable, dual-pin airplane adapter, and RCA audio cable.

Charging the Device:

Before first use, fully charge the Xmagpot T3. Connect the included USB-C charging cable to the Type-C Charging Port on the device and plug the other end into a USB power source (e.g., wall adapter, computer USB port). The Power LED Indicators will show the charging status:

- One LED: 25% charged
- Two LEDs: 50% charged
- Three LEDs: 75% charged
- Four LEDs: 100% charged

A full charge takes approximately 1.5 hours and provides up to 18 hours of usage.



Image: The Xmagpot T3 connected to a USB-C charging cable, illustrating its 18-hour battery life and 1.5-hour quick charge time.

Power On/Off:

- **Power On:** Press and hold the **OK** button for approximately 2 seconds.
- **Power Off:** Press and hold the **OK** button for approximately 5 seconds.

4. OPERATING MODES

The Xmagpot T3 operates in two modes: Transmitter (TX) and Receiver (RX). Use the Mode Switch Button on the side of the device to toggle between these modes.

Transmitter (TX) Mode:

In TX mode, the device transmits audio from a non-Bluetooth source (e.g., TV, airplane entertainment system, computer) to your Bluetooth headphones or speakers.

Receiver (RX) Mode:

In RX mode, the device receives audio from a Bluetooth source (e.g., smartphone, tablet, laptop) and outputs it to a non-Bluetooth audio system (e.g., car stereo, home amplifier, wired speaker).

Bluetooth Transmitter TX



Bluetooth Receiver RX



Image: Diagrams illustrating the connectivity for Bluetooth Transmitter (TX) mode, showing connection from airplane, TV, or computer to earphones, headphones, or Bluetooth speakers. Also shows Bluetooth Receiver (RX) mode, connecting from telephone, tablet, or laptop to car, amplifier, or speaker.

5. PAIRING INSTRUCTIONS

5.1. TX Mode Pairing (Transmitting Audio)

First Device Pairing (TX):

1. Set the Xmagpot T3 to TX mode using the Mode Switch Button.
2. Press and hold the **OK** button for approximately 3 seconds to enter pairing mode. The LED indicators A and B will alternately flash blue.
3. Put your Bluetooth headphones/speaker into pairing mode. For AirPods, open the lid and hold the reset button on the back of the case for about 5 seconds.
4. Once paired, LED indicator A will turn solid blue.
5. Plug the Xmagpot T3's 3.5mm audio jack into the audio output port of your desired device (e.g., airplane seat,

TV).



Image: Step-by-step visual guide for first device pairing in TX mode, showing AirPods, the T3 device in pairing state, and connection to an airplane audio jack.

Second Device Pairing (TX Dual Pairing):

1. Ensure the first device is already paired and connected.
2. Put the second Bluetooth headphones/speaker into pairing mode.
3. Double-click the **OK** button on the Xmagpot T3. The LED indicators A and B will flash again.
4. Once the second device is paired, both LED indicators A and B will turn solid blue.



Image: Step-by-step visual guide for dual device pairing in TX mode, showing AirPods, the T3 device, and confirmation of two successful pairings.

5.2. RX Mode Pairing (Receiving Audio)

First Device Pairing (RX):

1. Set the Xmagpot T3 to RX mode using the Mode Switch Button.
2. Press and hold the **OK** button for approximately 3 seconds to enter pairing mode. The LED indicators A and B will alternately flash blue.
3. On your Bluetooth source device (e.g., smartphone), go to Bluetooth settings and select "T3" from the list of available devices.

- Once paired, LED indicator A will turn solid blue.
- Plug the Xmagpot T3's 3.5mm audio jack into the audio input port of your desired audio system (e.g., car AUX, home stereo).

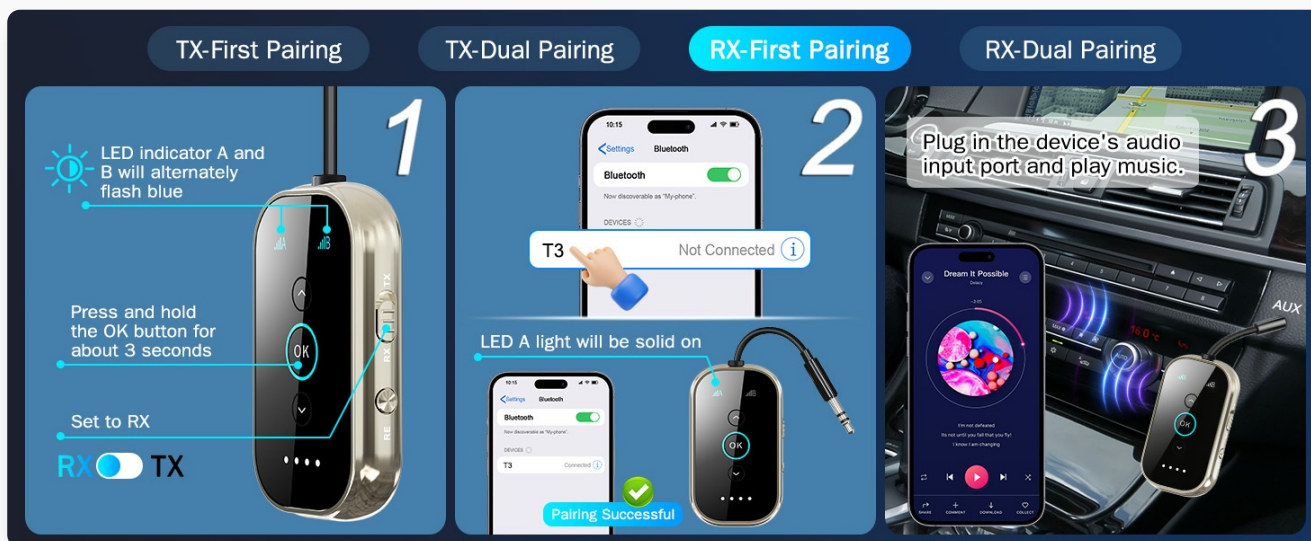


Image: Step-by-step visual guide for first device pairing in RX mode, showing the T3 device in pairing state, a smartphone's Bluetooth settings, and connection to a car's AUX port.

Second Device Pairing (RX Dual Pairing):

- Ensure the first device is already paired and connected.
- On your second Bluetooth source device, go to Bluetooth settings and select "T3" from the list of available devices.
- Double-click the **OK** button on the Xmagpot T3. The LED indicators A and B will flash again.
- Once the second device is paired, both LED indicators A and B will turn solid blue.

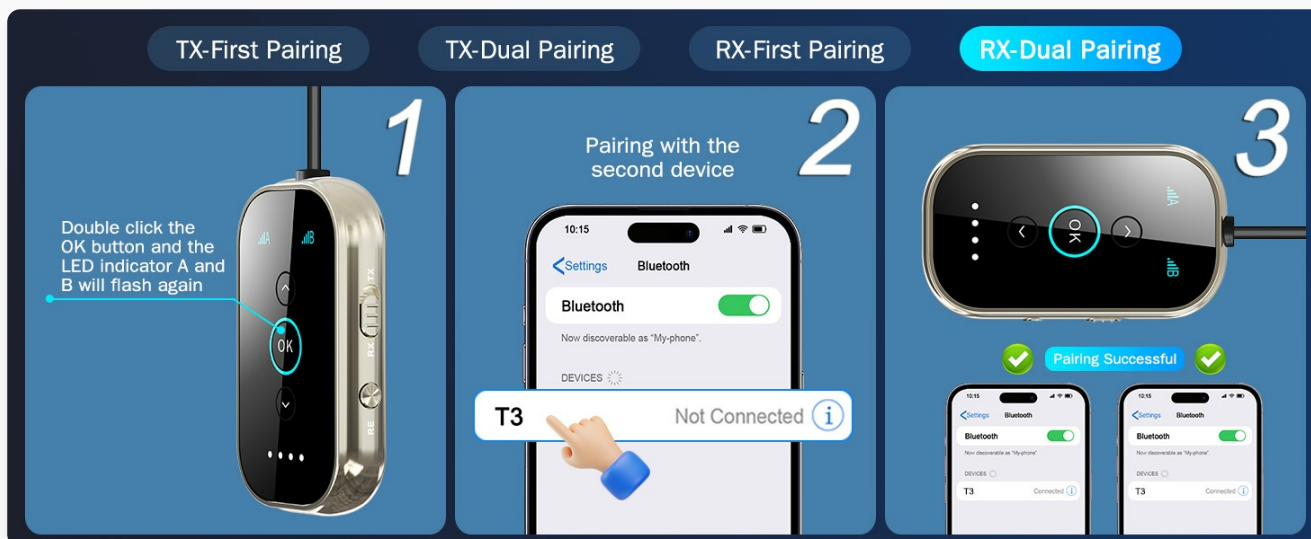


Image: Step-by-step visual guide for dual device pairing in RX mode, showing the T3 device, a smartphone's Bluetooth settings, and confirmation of two successful pairings.

6. CONTROLS AND INDICATORS



Image: Detailed diagram of the Xmagpot T3, labeling its buttons, ports, and explaining the functions of each control and the meaning of the LED indicators.

Multifunction Button (OK):

- **Power On:** Hold for 2 seconds (TX/RX).
- **Power Off:** Hold for 5 seconds (TX/RX).
- **Play/Pause:** Click (TX/RX).
- **Pair with Bluetooth:** Double-click for 2 seconds (TX/RX).

Volume Up / Previous Track Button (^):

- **Volume +:** Click (TX/RX).
- **Previous Track:** Hold for 2 seconds (RX only).

Volume Down / Next Track Button (v):

- **Volume -:** Click (TX/RX).
- **Next Track:** Hold for 2 seconds (RX only).

Reset Button:

- Hold for 8 seconds (while powered on) to reset the device. In RX mode, after a reset, if T3 appears in the Bluetooth list, you must search again and reconnect manually.

LED Indicator A/B:

- **Pairing:** LED A and B flashing blue.
- **Connect one Bluetooth device:** LED A solid blue.
- **Connect two Bluetooth devices:** LED A and B solid blue.

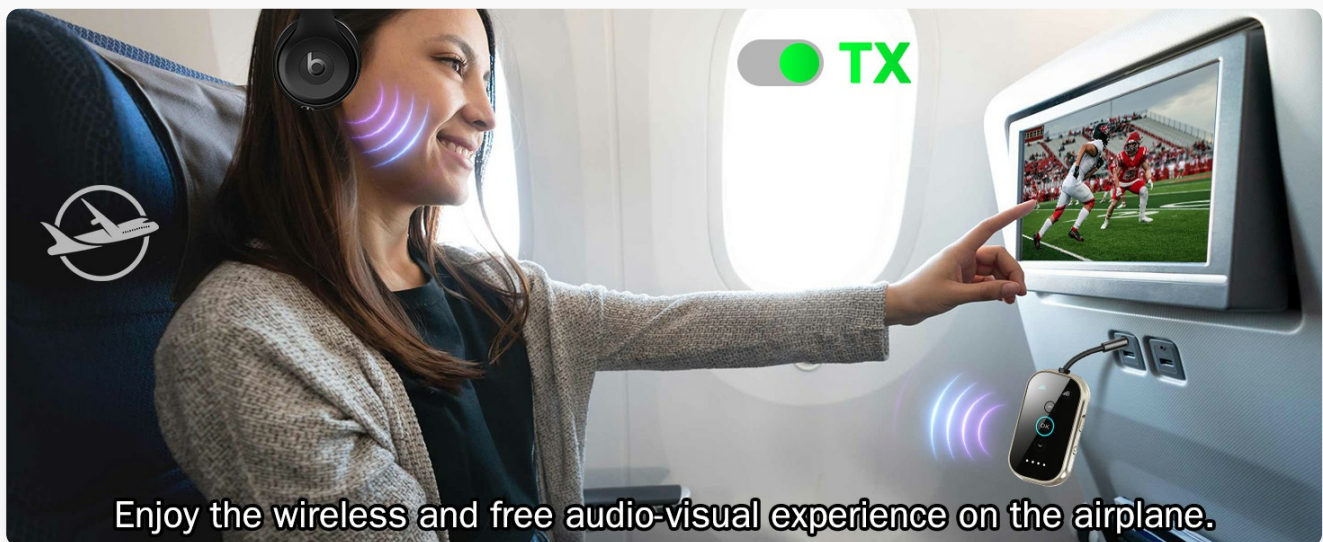
Power LED Indicator:

- Four dots indicating battery charge level: 25%, 50%, 75%, 100%.

7. USAGE SCENARIOS

7.1. TX Mode Applications:

- **Airplane Entertainment:** Plug the T3 into the airplane's audio jack (use the dual 3.5mm adapter if needed) to wirelessly stream audio to your Bluetooth headphones. Enjoy movies and music without tangled wires.



Enjoy the wireless and free audio-visual experience on the airplane.

Image: A person enjoying wireless audio from an airplane's in-flight entertainment system using the Xmagpot T3 in TX mode.

- **TV/Home Theater:** Connect the T3 to your TV's audio output (3.5mm or RCA via adapter) to watch TV or movies with Bluetooth headphones, ideal for late-night viewing without disturbing others.



A Parent's Lifesaver! Share the Game with Dual Headphones – Kids Sleep Soundly.

Image: A family sharing audio from a TV using the Xmagpot T3 in TX mode with two pairs of headphones, allowing quiet viewing.

7.2. RX Mode Applications:

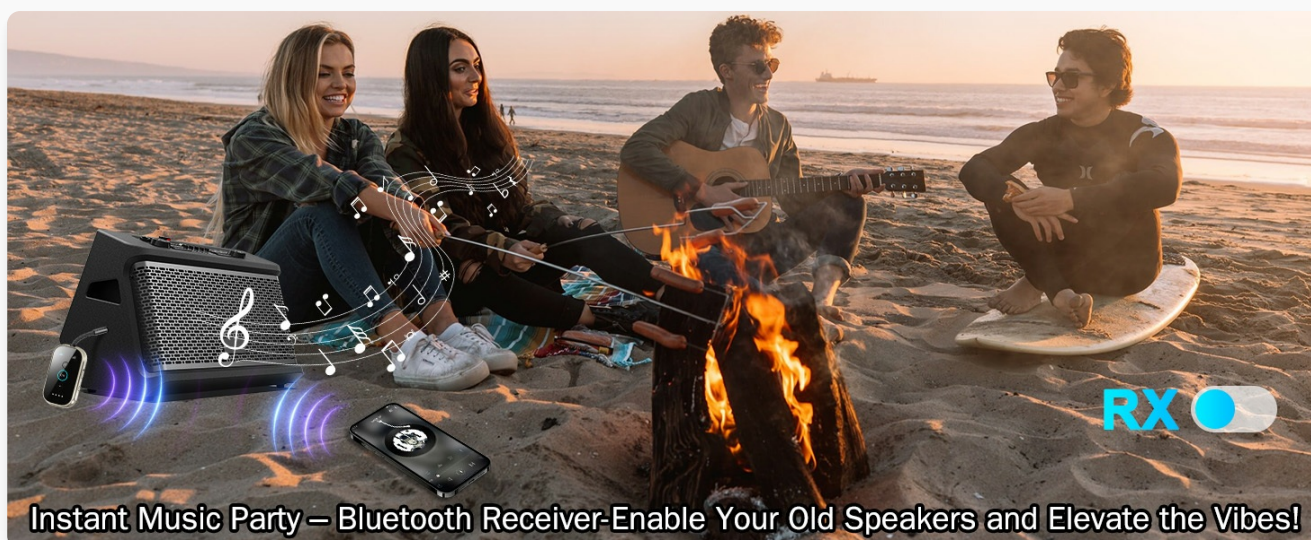
- **Car Audio:** Connect the T3 to your car's AUX input to stream music wirelessly from your smartphone to your car's speakers.



Easily connect to your mobile phone and play music at will.

Image: A person using the Xmagpot T3 in RX mode to stream music from their mobile phone to their car's audio system.

- **Old Speakers/Amplifiers:** Revitalize older audio equipment by connecting the T3 to their 3.5mm or RCA input, enabling them to receive Bluetooth audio from modern devices.



Instant Music Party – Bluetooth Receiver-Enable Your Old Speakers and Elevate the Vibes!

Image: People enjoying music outdoors with the Xmagpot T3 connected to an older speaker system, enabling Bluetooth streaming.

8. TROUBLESHOOTING

Common Issues and Solutions:

- **Device not powering on:** Ensure the device is fully charged. Connect to a power source and check the Power LED Indicators.
- **Cannot pair with a device:**
 - Ensure the T3 is in the correct TX/RX mode for your intended use.
 - Make sure the T3 is in pairing mode (LEDs A and B alternately flashing blue).
 - Ensure your target Bluetooth device (headphones/speaker/phone) is also in pairing mode.
 - Move the devices closer to each other.
 - Try resetting the T3 (hold Reset button for 8 seconds) and clearing previous Bluetooth connections on your target device.
- **No audio or poor audio quality:**

- Check that the 3.5mm audio cable is securely plugged into both the T3 and the audio source/destination device.
- Ensure the volume on both the T3 and the connected audio device is turned up.
- Verify that the T3 is in the correct TX/RX mode.
- If using TX mode, ensure the audio source device's output is active. If using RX mode, ensure the Bluetooth source device is playing audio.
- Reduce interference by moving away from other wireless devices (Wi-Fi routers, microwaves).
- **Dual pairing issues:** Ensure both target devices are in pairing mode when attempting dual connection. Follow the dual pairing steps precisely.
- **Device disconnects frequently:** Ensure the T3 is within the effective range of the connected Bluetooth device (approx. 33ft/10m). Avoid physical obstructions.

9. SPECIFICATIONS

Feature	Specification
Model Number	T3
Bluetooth Version	5.4
Audio Codecs	aptX Adaptive/HD (and others)
Operating Modes	Transmitter (TX), Receiver (RX)
Connectivity Technology	Bluetooth, AUX (3.5mm)
Dual Link Support	Yes (connects to 2 devices simultaneously)
Battery Life	Up to 18 hours
Charging Time	Approx. 1.5 hours
Charging Port	USB-C
Material	CNC Aluminum, Ceramic Glass
Product Dimensions	2.44 x 1.42 x 0.44 inches
Item Weight	4.2 ounces
Special Features	Noise Cancellation, Low Latency, Fast Charging

10. CARE AND MAINTENANCE

- **Cleaning:** Wipe the device with a soft, dry, lint-free cloth. Do not use liquid cleaners or aerosol sprays.
- **Storage:** Store the device in a cool, dry place away from direct sunlight and extreme temperatures when not in use.
- **Handling:** While durable, avoid dropping the device or subjecting it to strong impacts.
- **Battery Care:** To prolong battery life, avoid fully discharging the battery frequently. Charge the device regularly, even if not in constant use.

11. WARRANTY AND SUPPORT

Xmagpot is committed to providing high-quality products and excellent customer service.




- **Warranty:** This product comes with a 2-year support warranty.
- **Returns & Exchange:** Enjoy a 30-day return and exchange service from the date of purchase.
- **Replacement:** A 1-year free replacement service is provided for manufacturing defects.
- **Customer Support:** For any inquiries or assistance, please refer to the QR code included in your package for 24/7 online support or contact Xmagpot directly via email for prompt responses.






Image: An image detailing Xmagpot's customer support, including 2-year warranty, 24-hour response via email, 30-day return/exchange, and 1-year free replacement.

© 2025 Xmagpot. All rights reserved.

Related Documents - T3

	<p>Xmagpot T3 Wireless 2-in-1 Bluetooth Adapter User Manual</p> <p>User manual for the Xmagpot T3 Wireless 2-in-1 Bluetooth Adapter. Learn how to connect, pair, and use features like TX/RX modes, multi-device pairing, and specifications.</p>
	<p>Xmagpot T5 Wireless 2-in-1 Adapter User Manual</p> <p>Comprehensive user manual for the Xmagpot T5 Wireless 2-in-1 Adapter, covering setup, operation, specifications, and precautions.</p>
	<p>T3 SinglePass Ceramic 1" Styling Iron User Guide</p> <p>Comprehensive user guide for the T3 SinglePass Ceramic 1" straightening and styling iron, covering safety instructions, operating procedures, maintenance, and warranty information.</p>

	<p>Hair Straightener User Manual - Model T3</p> <p>User manual for the Model T3 hair straightener, providing instructions on usage, advantages, specifications, and safety precautions. Features include ceramic tourmaline plates, adjustable temperature with LCD display, and a 360° rotating cord.</p>
	<p>Xmagpot T3 Wireless 2-in-1 Bluetooth Adapter User Manual</p> <p>User manual for the Xmagpot T3 Wireless 2-in-1 Bluetooth Adapter. Learn how to connect, pair, and use features like TX/RX modes, multi-device pairing, and specifications.</p>
	<p>Xmagpot T5 Wireless 2-in-1 Adapter User Manual</p> <p>Comprehensive user manual for the Xmagpot T5 Wireless 2-in-1 Adapter, covering setup, operation, specifications, and precautions.</p>