



[Manuals.plus](#) /

- › [domi outdoor living](#) /
- › Domi 12'x18' Hardtop Gazebo User Manual

domi outdoor living LGMF1619-G-12x18

Domi 12'x18' Hardtop Gazebo User Manual

Model: LGMF1619-G-12x18

INTRODUCTION

Thank you for choosing the Domi 12'x18' Hardtop Gazebo. This manual provides essential information for the safe and efficient assembly, operation, and maintenance of your new outdoor structure. Please read these instructions carefully before beginning assembly and retain them for future reference.



Image: The Domi 12'x18' Hardtop Gazebo, showcasing its spacious design and integrated curtains, set up in an outdoor patio area.

This gazebo is designed to provide a durable and comfortable outdoor living space, featuring a galvanized steel double roof, integrated curtains, and netting for enhanced usability and protection against various weather conditions.

SAFETY INFORMATION

Always prioritize safety during assembly and use. Failure to follow these safety guidelines may result in injury or damage to the product.

- **Two-Person Assembly:** Assembly requires at least two adults. Do not attempt to assemble alone.
- **Clear Area:** Ensure the assembly area is clear of obstructions and hazards.
- **Proper Tools:** Use appropriate tools as specified in the assembly steps.
- **Secure Anchoring:** Always anchor the gazebo securely to the ground to prevent wind damage.
- **Weather Conditions:** While designed for all-weather use, extreme weather conditions (e.g., severe storms, heavy snow accumulation beyond specified limits) may require temporary disassembly or additional reinforcement. Clear heavy snow from the roof promptly.
- **Weight Limits:** Do not exceed the specified weight limits for ceiling hooks (20 lbs per hook).
- **Children and Pets:** Keep children and pets away from the assembly area.

PACKAGE CONTENTS

Before beginning assembly, verify that all parts listed below are present and undamaged. If any parts are missing or damaged, contact customer support immediately.

Note: A detailed parts list with diagrams is typically included in the physical packaging. Refer to that list for specific component identification.

- Galvanized Steel Roof Panels
- Powder-Coated Alloy Steel Frame Components (Beams, Posts, Connectors)
- Curtain Sets (Waterproof Polyester)
- Netting Sets (Textile Mesh)
- Hardware Kit (Bolts, Screws, Washers, Anchors)
- Assembly Tools (Basic wrench, Allen key - specific tools may vary)
- Instruction Manual

SETUP AND ASSEMBLY

The Domi Hardtop Gazebo is designed for straightforward assembly, typically taking 3-6 hours with two people. Follow the numbered steps provided in the included assembly guide for detailed instructions.

1. **Prepare the Site:** Choose a level, stable surface for installation. Ensure adequate clearance around the gazebo for assembly and future use.
2. **Unpack Components:** Carefully unpack all boxes and lay out components, organizing them by type and size. Refer to the parts list to identify each piece.
3. **Assemble the Frame:** Begin by connecting the main support beams and posts according to the diagrams. Ensure all connections are secure but do not fully tighten bolts until the frame is complete.
4. **Install Roof Structure:** Attach the roof support beams and central components. The triangular support structure ensures stability.
5. **Attach Roof Panels:** Install the galvanized steel roof panels. The double-layer roof design allows for ventilation and efficient water drainage.
6. **Secure Base:** Once the main structure is assembled, fully tighten all bolts. Secure the reinforced base plates to the ground using appropriate anchors for your surface type (e.g., concrete anchors, ground stakes).
7. **Install Curtains and Netting:** Attach the detachable curtains and bug netting to the designated tracks or hooks.



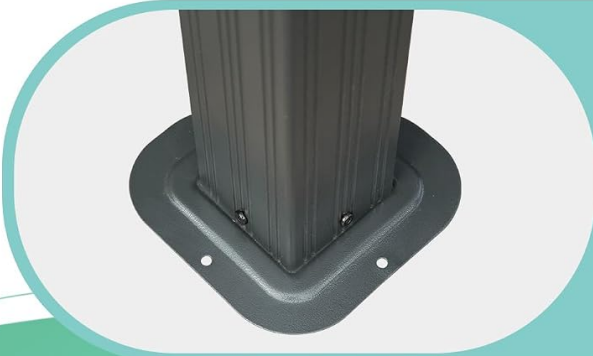
STURDY STRUCTURE

The triangular support structure ensures stability and strength.



DURABLE MATERIAL

With durable materials such as aluminum and galvanized steel, it can last for many years.



REINFORCED BASE

The reinforced base effectively prevents any potential tipping or shifting even under the influence of strong external forces.

Image: Key structural features including the triangular support, durable materials like aluminum and galvanized steel, and reinforced base for stability.

OPERATING INSTRUCTIONS

Double Roof System

The gazebo features a dual-layer galvanized steel roof designed for enhanced airflow and weather resistance. The space between the two roof layers promotes air circulation, keeping the interior cool during warmer weather. The sloped design ensures rapid drainage of rainwater and prevents water accumulation during snowmelt, contributing to the roof's durability.

DOUBLE GALVANIZED STEEL ROOF

The space between the two roof layers forming a ventilation system enables air circulation. The roof slope also allows rain and snow to drain ensuring roof durability.



Double Roof



Keep Ventilation



UV Resistant



KEEP MOSQUITOES OUT

Image: Detailed view of the double roof system, highlighting its ventilation capabilities and UV resistance for a comfortable and protected space.

Curtains and Netting

The included detachable curtains and bug netting offer versatility for your outdoor space:

- **Inner Netting:** Use the mesh netting to keep insects at bay while allowing air circulation and an open view. Ideal for summer evenings.
- **Outer Curtains:** Pull down the waterproof polyester curtains for privacy, shade from harsh sunlight, or to provide warmth during cooler weather. They can be tied back when not in use.

DETACHABLE CURTAIN AND NETTING



Edge-wrapping



Keep Ventilated



Enjoy the outdoors



Inner Nettings



Anti-mosquito



Block Harsh Sunlight



Outer Curtains



Privacy Protection



Keep Warm

Image: Visual representation of the gazebo with curtains and netting in various states: fully open, semi-open with netting, and fully closed for privacy and protection.

Ceiling Hooks

The gazebo roof is equipped with sturdy ceiling hooks. Each hook can support up to 20 lbs, allowing you to hang lights, fans, or decorative items to customize your outdoor ambiance.



CEILING HOOK

You can hang lights, fans or decorations on the hooks to create a comfortable outdoor environment.

Image: A close-up view of the ceiling hook, demonstrating its use for hanging a light fixture and a fan, enhancing the gazebo's functionality.

MAINTENANCE

Regular maintenance will ensure the longevity and appearance of your Domi Hardtop Gazebo.

- **Cleaning:** Clean the frame and roof panels with a mild soap and water solution. Rinse thoroughly with clean water. Avoid abrasive cleaners or harsh chemicals.
- **Curtains and Netting Care:** The polyester curtains and mesh netting can be spot cleaned or hand washed with mild detergent. Ensure they are completely dry before storing or reattaching to prevent mildew.
- **Snow Removal:** While the roof is designed to handle snow, it is recommended to clear heavy snow accumulation promptly to prevent excessive stress on the structure.
- **Inspection:** Periodically inspect all bolts and connections to ensure they remain tight. Check for any signs of wear or damage to the frame or roof panels and address them promptly.
- **Seasonal Storage:** In areas with extremely harsh winters, consider disassembling and storing the

curtains and netting indoors to prolong their lifespan.



Image: The gazebo's resilience across various weather conditions, including sunny (anti-UV rays), rainy (withstands wind and rain), and snowy (holds heavy snow).

TROUBLESHOOTING

This section addresses common issues you might encounter with your gazebo.

- **Wobbly Structure:** Ensure all bolts and connections are fully tightened. Verify that the gazebo is installed on a level surface and properly anchored.
- **Water Accumulation on Roof:** The sloped roof is designed for drainage. If water pools, check for any obstructions on the roof or ensure panels are correctly aligned and installed.
- **Curtains/Netting Not Sliding Smoothly:** Inspect the tracks for debris or damage. Clean the tracks and ensure the curtain/netting hooks are properly seated.
- **Rust Spots:** While the frame is powder-coated and the roof galvanized, minor scratches can expose metal. Touch up any scratches with rust-inhibiting paint to prevent further corrosion.
- **Missing Parts:** If parts are missing upon delivery, refer to the Package Contents section and contact customer support with the specific part numbers.

SPECIFICATIONS

Feature	Detail
Brand	domi outdoor living
Model Number	LGMF1619-G-12x18
Product Dimensions (L x W x H)	216"L x 114"W x 120"H (18 ft L x 9.5 ft W x 10 ft H)

Item Weight	506.84 Pounds (approx. 507 lbs)
Frame Material	Alloy Steel (Powder-Coated)
Roof Material	Galvanized Steel (Double Roof)
Curtain Material	Waterproof Polyester
Netting Material	Textile Mesh
Water Resistance Level	Waterproof
UV Protection	99% UV-proof, UPF 50+
Snow Load Capacity	Up to 2500 lbs
Wind Resistance	40-50 MPH
Assembly Required	Yes (Approx. 3-6 hours for 2 people)

DIMENSIONS OF DOMI GAZEBO

Create a comfortable outdoor living space for your family.

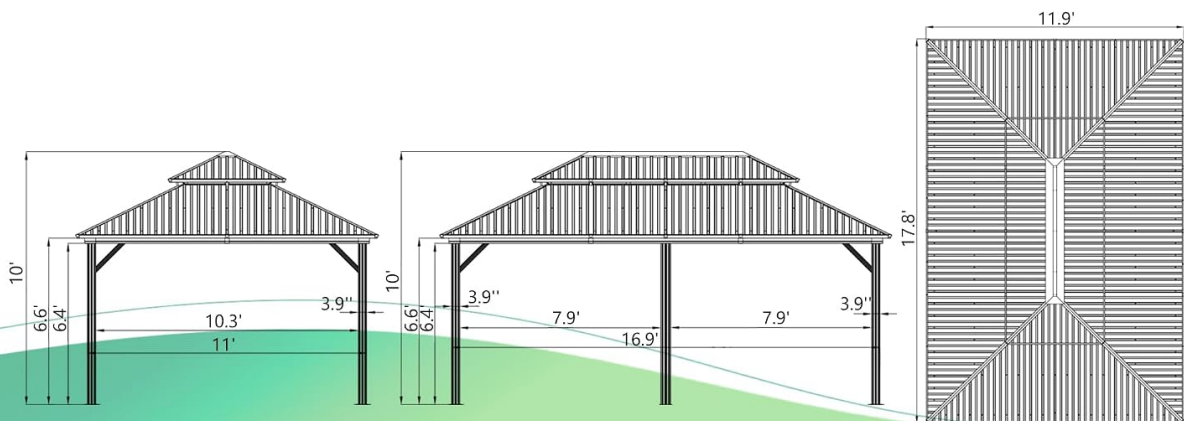
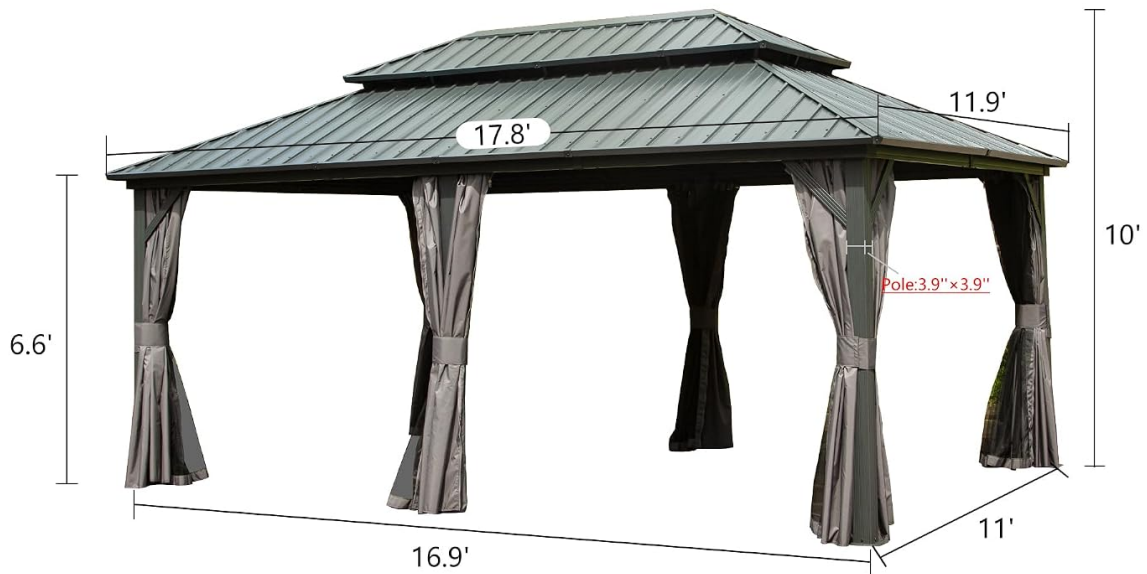


Image: Technical drawing illustrating the key dimensions of the Domi Gazebo, including height, length, and width

measurements.

CUSTOMER SUPPORT

For any questions, concerns, or assistance with your Domi Hardtop Gazebo, please contact our customer support team. Have your model number (LGMF1619-G-12x18) and purchase information ready when you call or email.

Contact information is typically provided on the product packaging or the retailer's website.